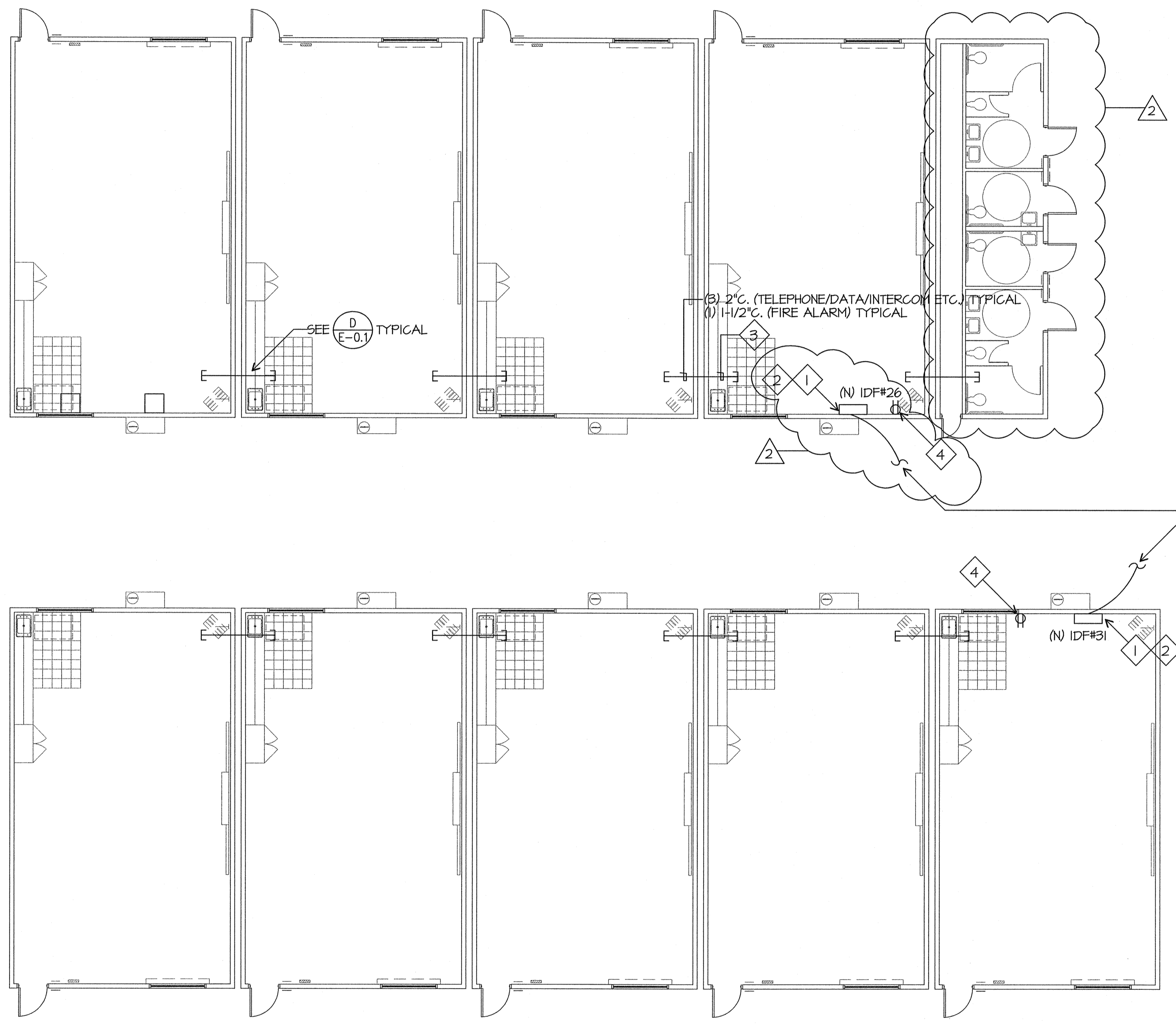


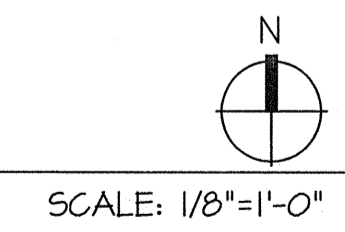
**COMMUNICATION PLAN NOTES**

- 1 CONNECT TO SPARE 20/1 CIRCUIT BREAKER IN PANEL PROVIDED WITH CLASSROOM.
- 2 PROVIDE (1) RE4 EQUIPMENT CABINETS WITH (1) 48 PORT PATCH PANEL, AMO BCSD CONNECTORS, BY HUBBELL COMPANY. COORDINATE WITH GARY TAYLOR, NETWORK SYSTEMS ENGINEER FOR BAKERSFIELD CITY SCHOOL DISTRICT, 661-631-4745.
- 3 SUPPORT CABLE EVERY 5' VIA J-HOOKS, INSTALLED AT LEAST 8" ABOVE CEILING ON PERIMETER WALLS, TYPICAL.
- 4 ADD RECEPTACLE NEXT TO (N) IDF. PROVIDE 20/1 CIRCUIT BREAKER FROM PANEL PROVIDED WITH PORTABLE. PROVIDE MATERIALS NEEDED FOR DEDICATED CIRCUIT TO BE USED FOR INTRUSION POWER SUPPLY. COORDINATE REQUIREMENTS WITH BAKERSFIELD CITY SCHOOL VENDOR MORGAN CLAYTON, 661-397-5511.



SEE SHEET E-2 FOR CONTINUATION

**COMMUNICATION PLAN**



**Ownership of Documents**  
 This document, the ideas and designs incorporated herein, as an instrument of Professional Service is the property of Integrated Designs by SOMAM Inc. and is not to be used, in whole or in part for any other project without written authorization. © COPYRIGHT 2009

**integrated designs** by SOMAM, Inc.  
 ARCHITECTURE • ENGINEERING • INTERIOR DESIGN • CONSTRUCTION MANAGEMENT  
 6011 N. Fresno, Suite 130 - Fresno, California 93710  
 Phone (559) 436-0887 Fax (559) 436-0887 E-Mail: design@somam.com  
 www.integrateddesigns.com

Revision	Rev. Date	Rev. Description
1	10/15/09	CHANGE ORDER
2	01/22/10	

**COMMUNICATION PLAN**

Project Name & Address:  
**MUNSEY ELEMENTARY SCHOOL**  
**10 NEW PORTABLE CLASSROOMS**  
 BAKERSFIELD CITY SCHOOL DISTRICT  
 3801 BRAVE AVE. BAKERSFIELD, CA 93309

Issue Date:	Date:	05/02/06
Designer:	DR:	DESIGNER
DRAFTER:	FC:	DRAFTER
CJM		

DSA Identification Stamp:

Stamp(s):

Job No.: **3832**

Sheet No.: **X9-E-2.1**

Release: CURTIS MCNALLY

**JMPE**  
 LICENSED ELECTRICAL ENGINEERING  
 LIGHTING DESIGN  
 CA REGISTRATION NO. E13043  
 09082

6000 MING AVENUE,  
 SUITE 200  
 BAKERSFIELD, CA 93309  
 (805) 831-7901  
 FAX (805) 831-7913  
 email: maloney@jmap.com  
 www.jmap.com