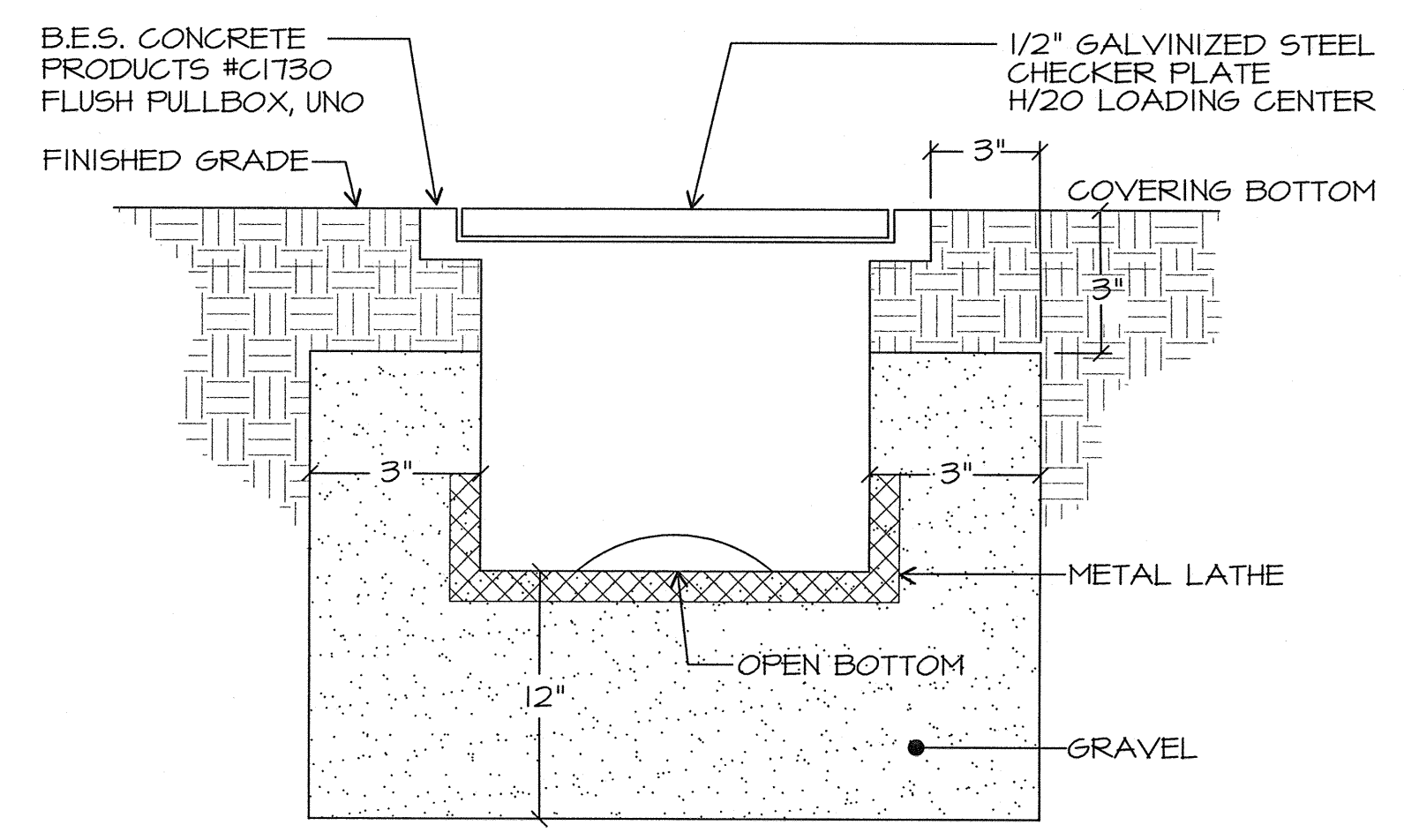
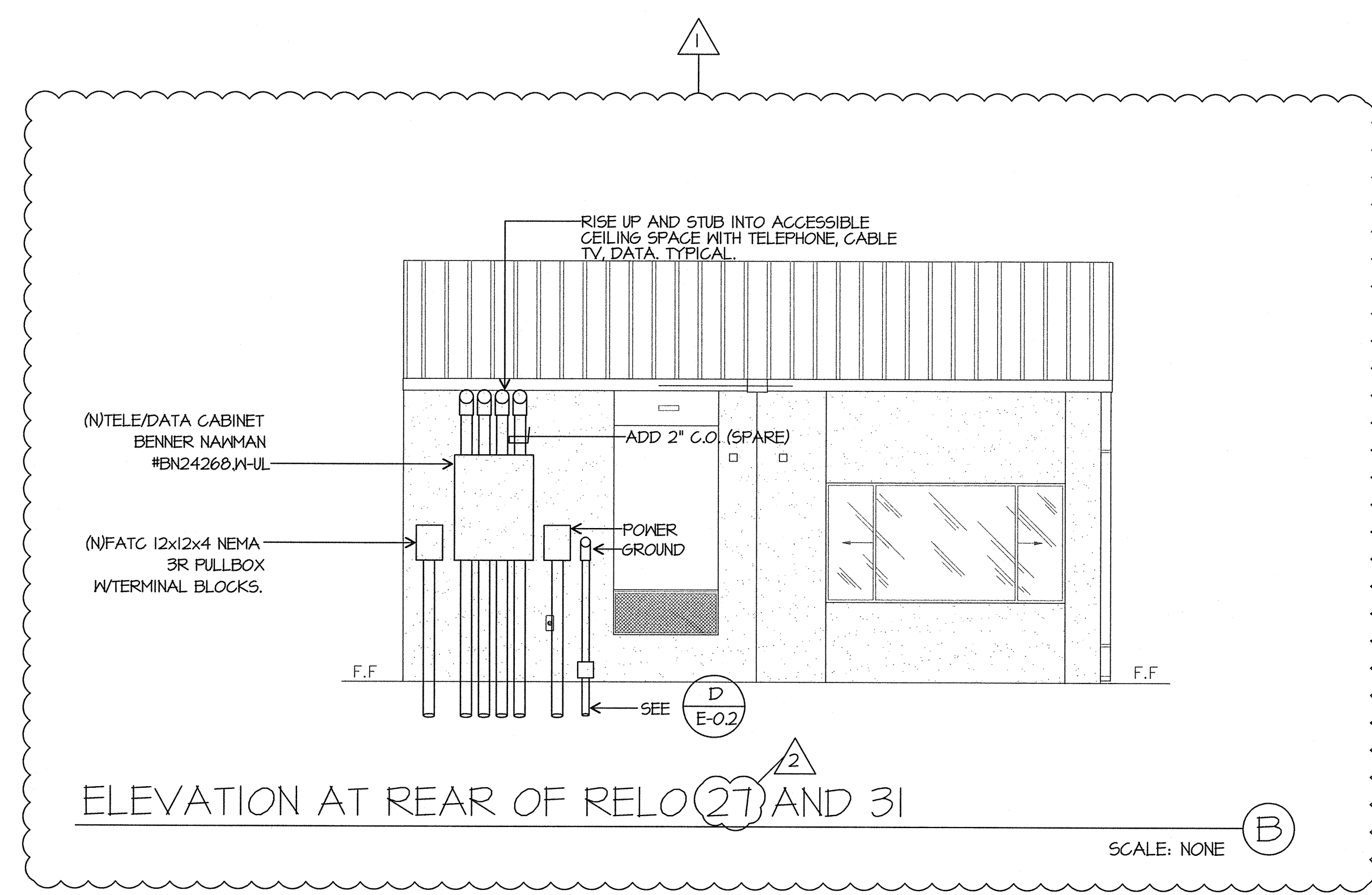


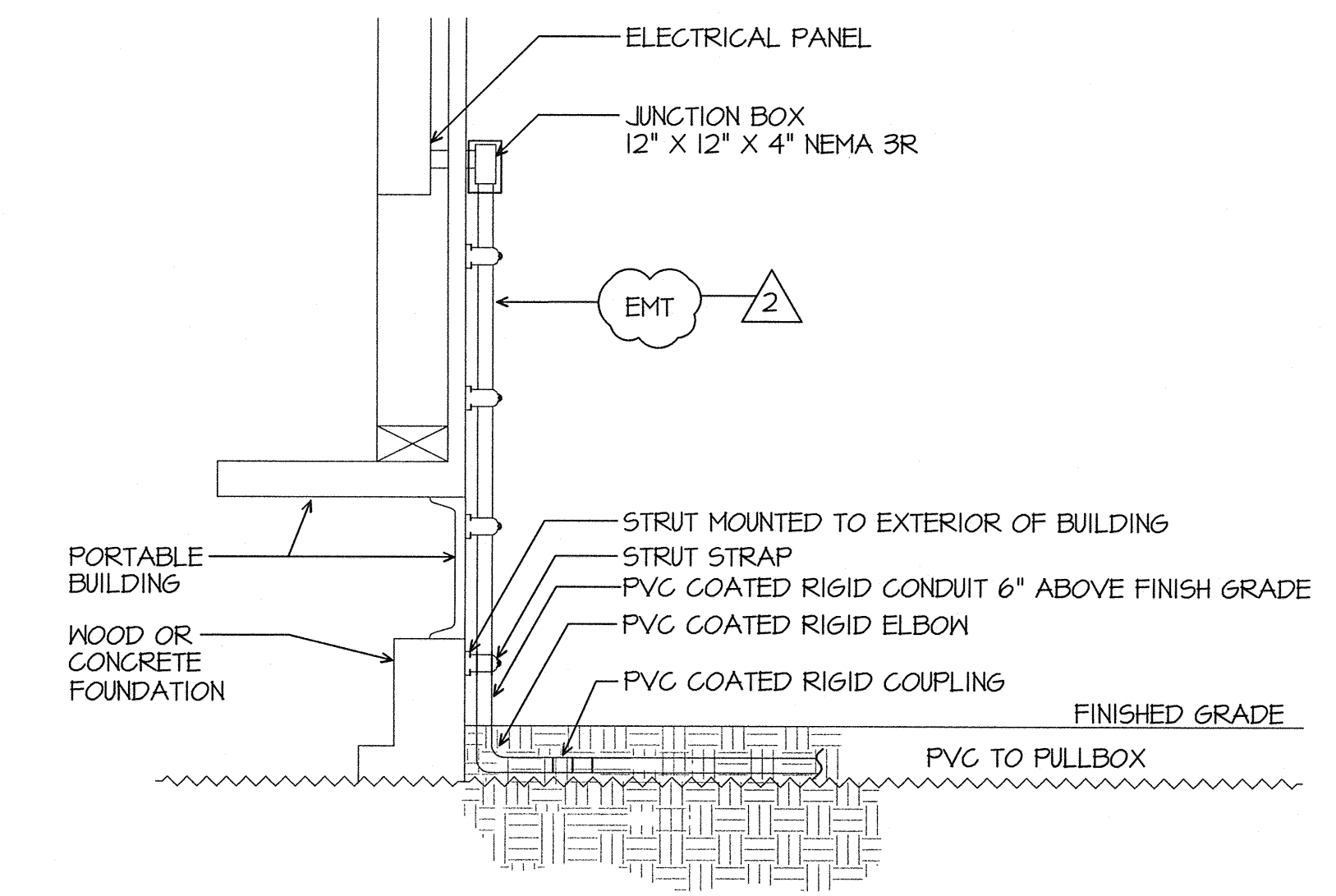
- TYPICAL CLASSROOM NOTES**
- 1 PROVIDE (ATLAS MODEL #SD72-W 25W/70W OR EQUAL) CEILING MOUNTED SPEAKER. PROVIDE A DEDICATED WESTPENN 369 CABLE BACK TO THE TERMINAL CABINET. TERMINATE ON 66 BLOCK. TERMINATE SHIELDED CABLE ON SPEAKER. PROVIDE 3 SERVICE LOOPS OF CABLE AT EACH SPEAKER LOCATION.
 - 2 PROVIDE (CORTELCO EASYTOUCH MODEL #240085-VOE-21F, COLOR SANDSTONE) TELEPHONE WITH RJ11 JACK AT EXISTING OUTLET. EXTEND 369 CABLE FROM SPEAKER, USE ONE OF TWO PAIR LEFT FOR TELEPHONE CONNECTION. PROVIDE ONE DEDICATED CAT 5 CABLE, (GENERAL CABLE #5500) TO IDF CABINET (FUTURE SPARE).
 - 3 PROVIDE RJ45 DATA JACK AT (E) OUTLET. ROUTE (1) CAT5 CABLE (GENERAL CABLE #5500) BACK TO NEAREST IDF CABINET AND TERMINATE ON PATCH PANEL.
 - 4 SURFACE MOUNT WIREMOLD BRAND, TWO COMPARTMENT 5400 SERIES RACEWAY WITH SPLIT COVER. CONTRACTOR SHALL PROVIDE ALL ACCESSORIES, FITTINGS, FACEPLATES AND DEVICES FOR A COMPLETE SYSTEM. COORDINATE EXACT LOCATION WITH ROBERT VAN TASSLE, SUPERVISOR, PLANNING AND CONSTRUCTION BAKERSFIELD CITY SCHOOL DISTRICT, 661-631-5884. MOUNT AT 18" A.F.F.
 - 5 PROVIDE (7) CAT5 CABLES BACK TO CLOSEST IDF AND TERMINATE ON PATCH PANEL.
 - 6 NUMBER SIGNIFIES THE QUANTITY OF RJ45 JACKS AT DATA LOCATION. CONTRACTOR SHALL PROVIDE AND INSTALL CABLE, JACKS AND TERMINATIONS.
 - 7 PROVIDE BLONDER TONGUE T-TAPS WITH QUAD SHIELD COMPRESSION TERMINATIONS. CABLE CONTINUES TO ADJACENT PORTABLE CLASSROOM. INTERIOR TV CABLE SHALL BE RG6 QUAD SHIELD CABLE. PROVIDE 12' OF EXTRA CABLE PER CLASSROOM. COORDINATE WITH GARY TAYLOR, NETWORK SYSTEMS ENGINEER FOR BAKERSFIELD CITY SCHOOL DISTRICT, 661-631-4745.
 - 8 FROM COMMUNICATION TERMINAL CABINET.
 - 9 TO SPARE 120V CIRCUIT IN CLASSROOM PANEL. PROVIDE 20/1 CIRCUIT BREAKER AS NEEDED.
 - 10 PROVIDE 2' SERVICE LOOP, TYPICAL.



FLUSH PULLBOX DETAIL
SCALE: NONE (C)



ELEVATION AT REAR OF RELO 27 AND 31
SCALE: NONE (B)



TYPICAL PORTABLE CONNECTION
SCALE: NONE (D)

Ownership of Documents
This document, the ideas and designs incorporated herein, as an instrument of Professional Service is the property of Integrated Designs by SOMAM, Inc. and is not to be used, in whole or in part for any other project without written authorization.
© COPYRIGHT 2009

integrated designs by SOMAM, Inc.
ARCHITECTURE - ENGINEERING - INTERIOR DESIGN - CONSTRUCTION MANAGEMENT
6011 N. Fresno, Suite 130 - Fresno, California 93710
Phone (559) 436-0881 Fax (559) 436-0887 E-Mail: design@somam.com
www.integrateddesigns.com

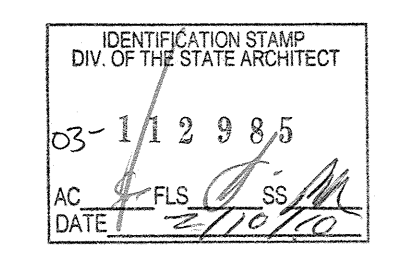
Revision	Description	Rev. Date
1	ADDENDUM 1	10/15/09
2	CHANGE ORDER	01/22/10

Sheet Title:
**SINGLE LINE DIAGRAM, SYMBOLS
DETAILS, GENERAL NOTES**

Project Name & Address:
**MUNSEY ELEMENTARY SCHOOL
10 NEW PORTABLE CLASSROOMS**
BAKERSFIELD CITY SCHOOL DISTRICT
3801 BRAVE AVE. BAKERSFIELD, CA 93309

Issue Date:	Date:	Designer:	DR:	FC:
	05/02/06		DRAFTER	CJM

DSA Identification Stamp:



Stamp(s):

Job No.: **3832**

Sheet No.: **X5-E-0.2**

JMPE
LICENSED PROFESSIONAL ENGINEER
ELECTRICAL ENGINEERING
LIGHTING DESIGN
CA REGISTRATION NO. 813083
5050 MIDWAY AVENUE, SUITE 200, BAKERSFIELD, CA 93309
(805) 981-7961 FAX (805) 831-7913
email: maloney@jmpe.net www.jmpe.net