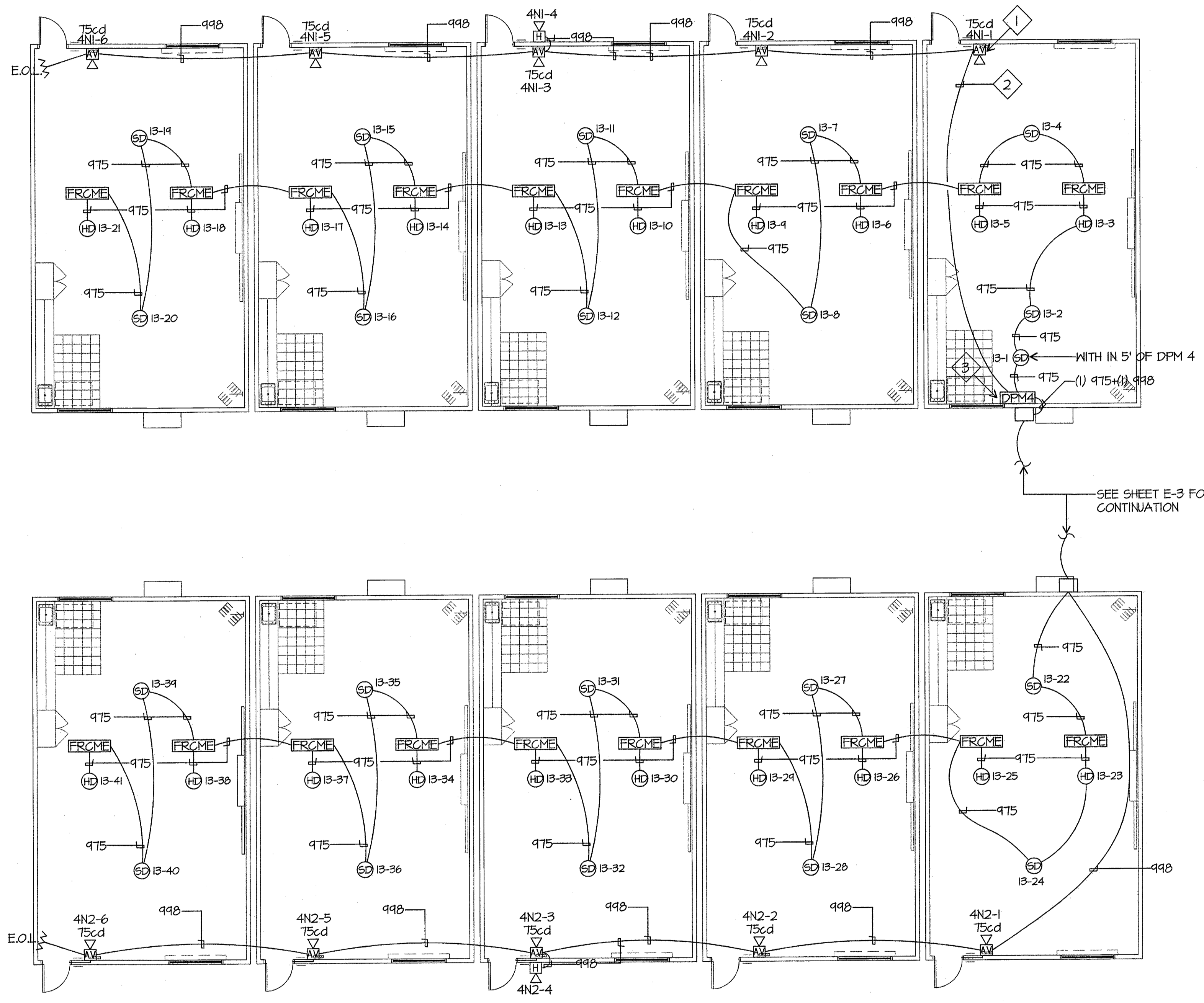
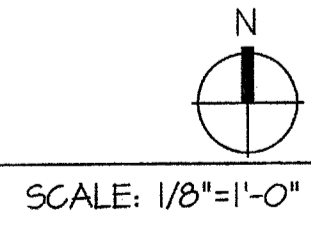


FIRE ALARM PLAN NOTES

- 1 FIRE ALARM CABLE SHALL BE INSTALLED IN 3/4" CONDUIT IN WALLS, TYPICAL.
- 2 SUPPORT FIRE ALARM CABLE EVERY 5' VIA J-HOOKS INSTALLED AT LEAST 8" ABOVE CEILING ON PERIMETER WALLS, TYPICAL.
- 3 PROVIDE 20/1 CIRCUIT BREAKER PER NFPA 72 FOR DPM.



FIRE ALARM PLAN



Ownership of Documents
 This document, the ideas and designs incorporated herein, as an instrument of Professional Service is the property of Integrated Designs by SOMAM, Inc. and is not to be used, in whole or in part for any other project without written authorization.
 © COPYRIGHT 2009

integrated designs by SOMAM, Inc.
 ARCHITECTURE • ENGINEERING • INTERIOR DESIGN • CONSTRUCTION MANAGEMENT
 6011 N. Fresno, Suite 130 - Fresno, California 93710
 Phone (559) 438-0887 Fax (559) 438-0887 E-Mail: design@somam.com
 www.integrateddesigns.com

Revision:	Revision:	Revision:	Revision:
Rev. Date:	Rev. Date:	Rev. Date:	Rev. Date:
Revision Description:	Revision Description:	Revision Description:	Revision Description:

FIRE ALARM PLAN
MUNSEY ELEMENTARY SCHOOL
10 NEW PORTABLE CLASSROOMS
 BAKERSFIELD CITY SCHOOL DISTRICT
 3801 BRAVE AVE. BAKERSFIELD, CA 93309

Issue Date:	Date:	05/02/06
Designer:	DR:	DESIGNER
DRAFTER:	FC:	CJM

DSA Identification Stamp:
 IDENTIFICATION STAMP
 DIV. OF THE STATE ARCHITECT
 25-12985
 AC - FLS SS
 DATE SEP 7 4 2006

Stamp(s):

JMPE
 ELECTRICAL ENGINEERING
 LIGHTING DESIGN
 CA REGISTRATION NO. 81808
 04082
 5200 KING AVENUE,
 SUITE 201
 BAKERSFIELD, CA 93309
 (805) 833-7955
 FAX (805) 833-7815
 Email: maloney@jmpe.net
 www.jmpe.net

Professional Engineer Seal:
 CURTIS E. FENN
 No. C 28966
 Exp. 5-31-19
 STATE OF CALIFORNIA

Job No.: **3832**
 Sheet No.: **E-3.1**
 Release: _____