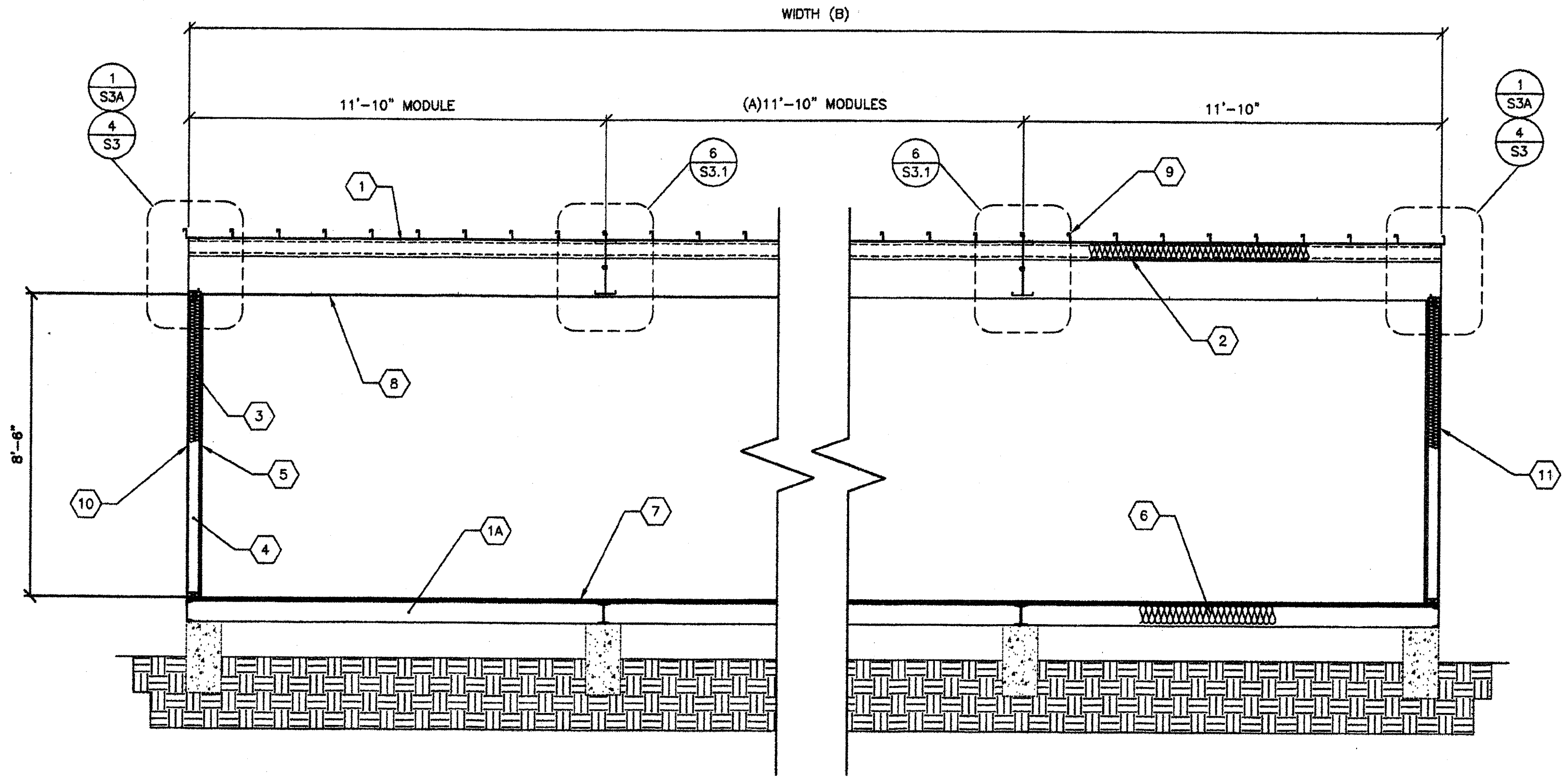


A TYP. LONGITUDINAL SECTION
3/8"=1'-0"

- KEY NOTES -**
- 1 "Z" PURLINS @ 48" O.C
 - 1A STEEL "Z" FLOOR JOISTS @ 48" O.C.
 - 2 R-19 INSULATION w/22 GA WIRE @ 16" O.C
 - 3 INSULATION w/KRAFT PAPER
 - 4 2x STUDS PER ELEV, S5
 - 5 VINYL FABRIC ON RIGID TACKABLE BACKING, 8'-6" PANELS
 - 6 INSULATION w/KRAFT PAPER AND CHICKEN WIRE
 - 7 1 1/8" PLYWOOD FLOOR SHEATHING FOR ALT SEE SHEET S2, S2A, S2B,S2C
 - 8 SUSPENDED T-BAR CEILING
 - 9 METAL ROOF PANELS SEE ROOF FRAMING PLAN
 - 10 TYPICAL PLYWOOD NAILING .131x2 1/2" GALV @ 6" O.C PANEL EDGES (ALL EDGES BLOCKED). 131x2 1/2" GALV @ 12" O.C FIELD
 - 11 EXTERIOR WALL FINISH PER EXTERIOR ELEVATIONS



B TYP. TRANSVERSE SECTION
3/8"=1'-0"

- MODULE SCHEDULE -

BLDG SIZE (FT)	TOTAL # OF 12' WIDE MODULES	"A" TOTAL # OF CENTER MODULES	"B" TOTAL BLDG WIDTH
24' x 40'	2	0	23'-8 1/4"
36' x 40'	3	1	35'-6 1/2"
48' x 40'	4	2	47'-4 3/4"
60' x 40'	5	3	59'-3"
72' x 40'	6	4	71'-1 1/4"
84' x 40'	7	5	82'-11 1/2"
96' x 40'	8	6	94'-9 3/4"
108' x 40'	9	7	106'-8"
120' x 40'	10	8	118'-6 1/4"

IDENTIFICATION STAMP
DIV. OF THE STATE ARCHITECT
05-112985
AC FL3 SS2A
DATE SEP 24 2008

REVISIONS

NO	DATE	DESCRIPTION

DATE: 02/05/08
SCALE: NOTED
DRAWN BY: DM
SERIAL NO.:

CUSTOMER:
2:12 PITCHED ROOF 24' x 40' THRU 120' x 40' RELOCATABLE BUILDINGS
BUILDING SECTIONS



APPROVALS:
THESE DRAWINGS ARE PRELIMINARY AND NOT FOR CONSTRUCTION UNLESS STAMPED & SIGNED BY THE ENGINEER OF RECORD.
Kenneth A. Lathol No. 1418 EXP. 3-31-09 Structural Engineer
STATE OF CALIFORNIA

IDENTIFICATION STAMP
DIV. OF THE STATE ARCHITECT
OFFICE OF REGULATION SERVICES
PC 02-109695
AC FL3 SS2A
DATE 3/23/2009

PROJECT NO.
S7

THESE DRAWINGS AND SPECIFICATIONS ARE THE PROPERTY OF AMERICAN MODULAR SYSTEMS AND ARE NOT TO BE REPRODUCED, CHANGED OR COPIED IN ANY FORM OR MANNER, NOR ARE THEY TO BE ASSIGNED TO ANY THIRD PARTY WITHOUT THE WRITTEN AUTHORIZATION OF AMERICAN MODULAR SYSTEMS.