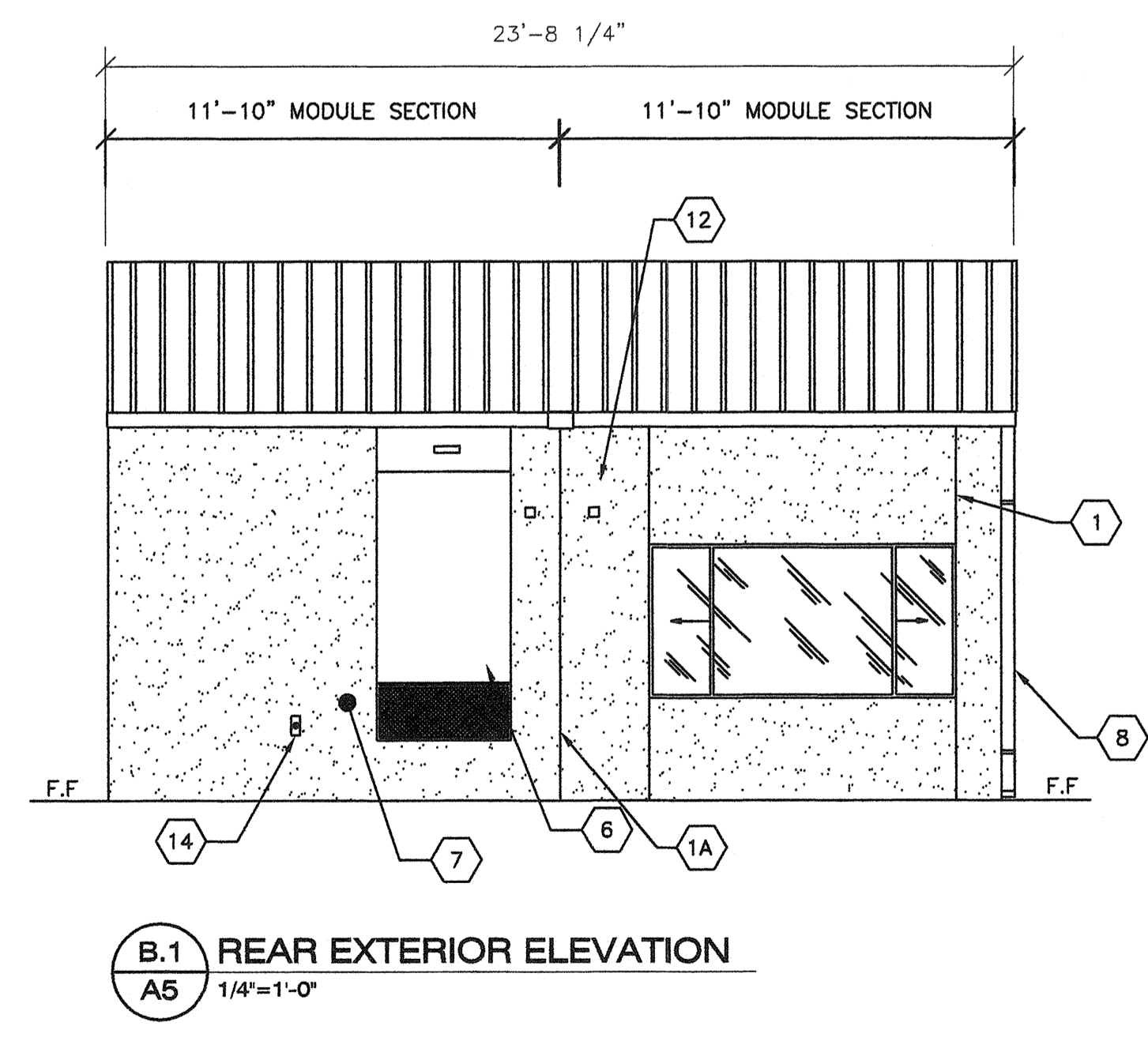
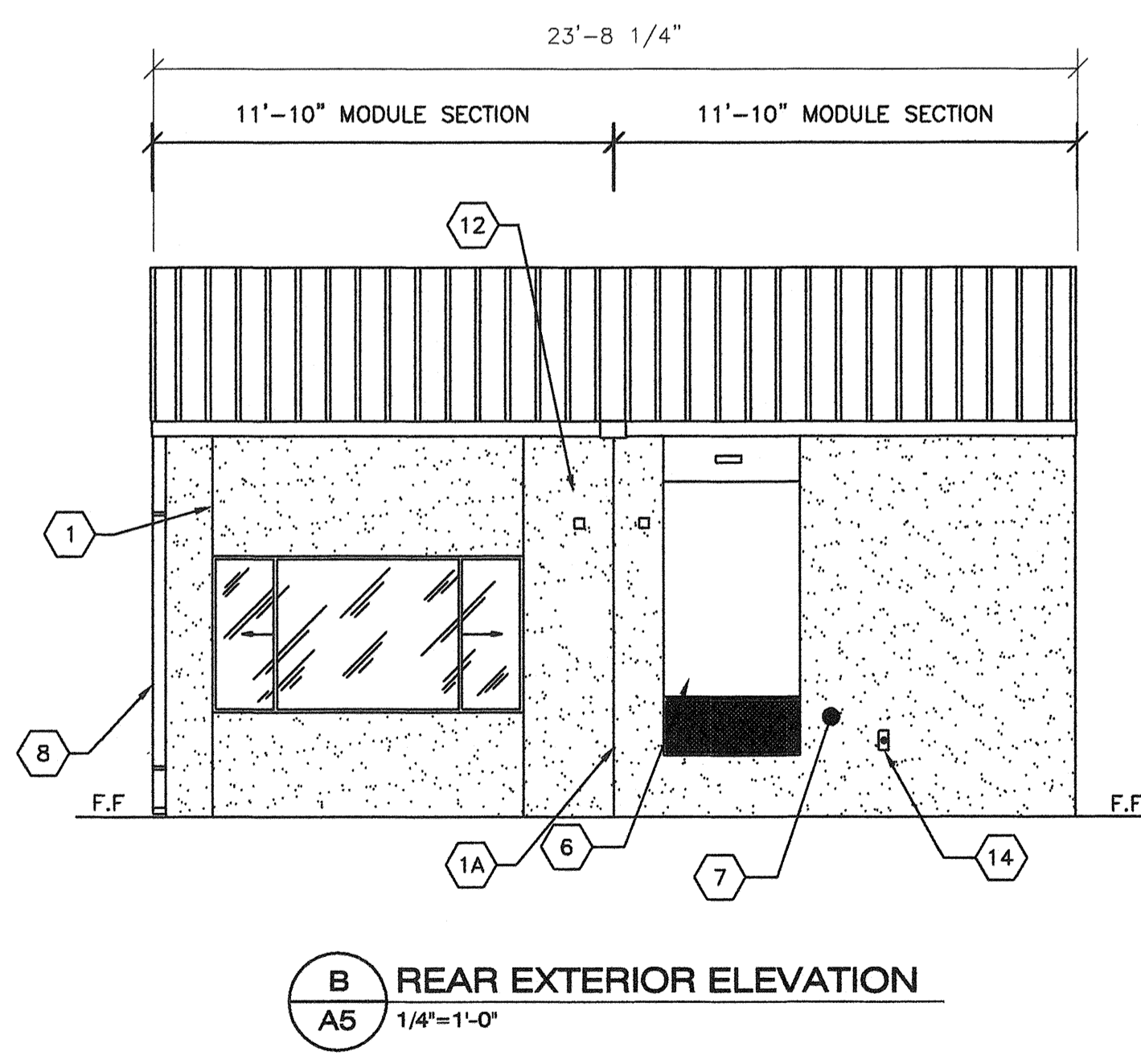
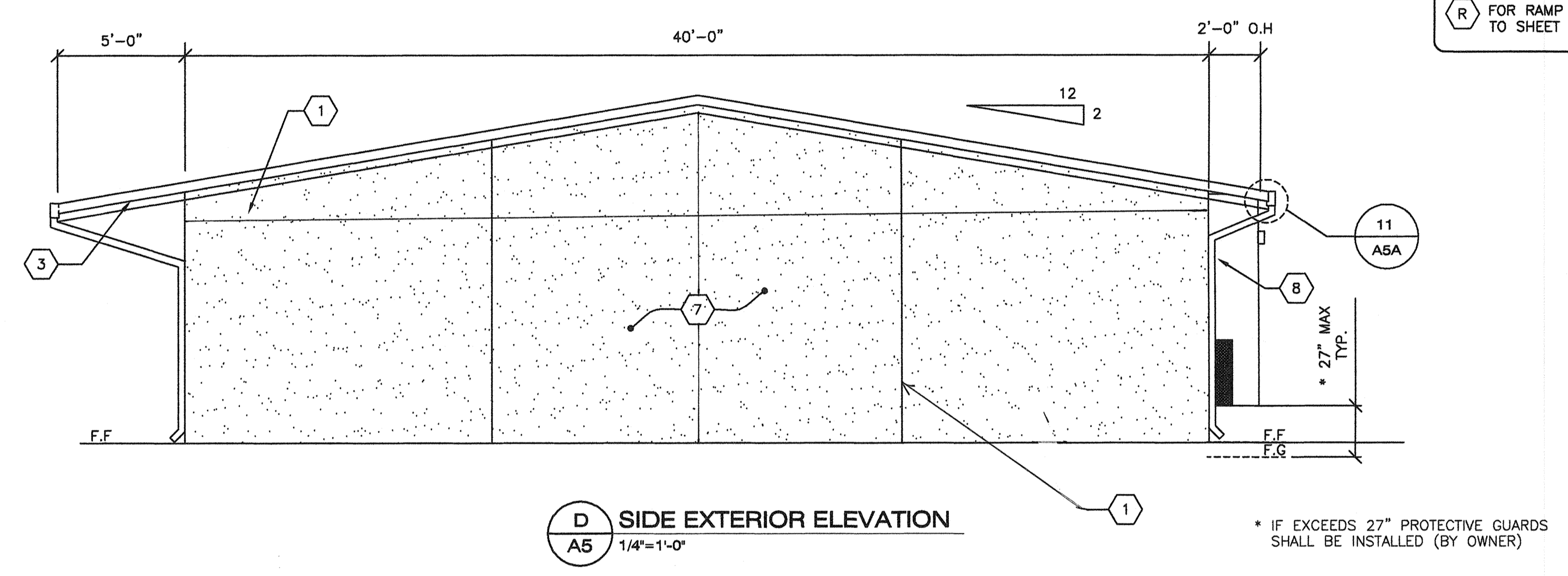
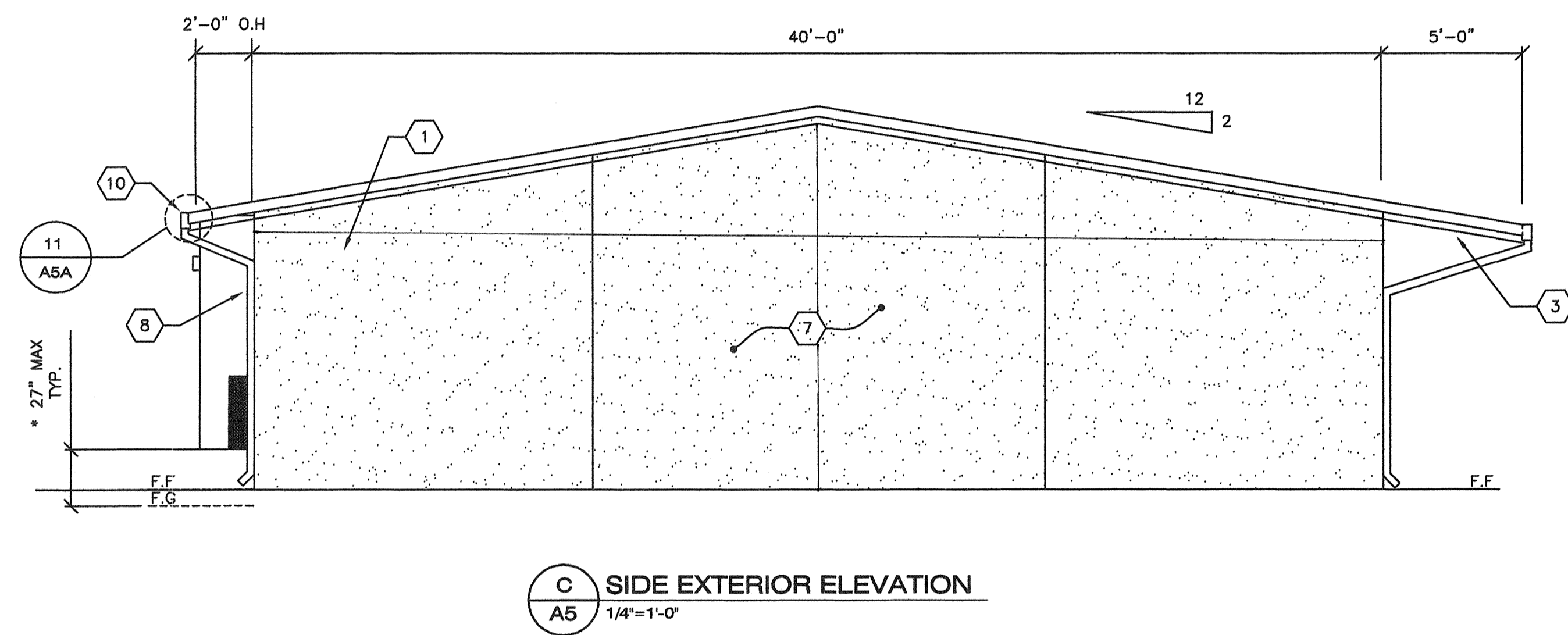


- SHEET NOTES -**
- 1 CONTROL JOINT (LOCATIONS MAY VARY)
 - 1A 16 GA. FLASHING TRIM @ MODLINES TYP.
 - 2 STANDING SEAM METAL ROOFING
 - 3 OVERHANG
 - 4 TYPICAL EXTERIOR DOOR
 - 5 WINDOW SEE SPEC'S
 - 6 HVAC UNIT TYP.
 - 7 ACRYLIC TEXTURED FINISH OVER HARDI-BOARD
 - 8 DOWNSPOUT (QUANTITY & LOCATION MAY VARY)
 - 9 ROOM ID AND ISA SIGNAGE (BY OWNER) TYP REFER TO DETAILS 5/AD AND 9/AD
 - 10 GUTTER
 - 11 EXTERIOR LIGHT FIXTURE TYP
 - 12 MODULAR IDENTIFICATION TAG, +90° ABOVE F.F.
 - 13 FIRE ALARM HORN (REFER TO E1)
 - 14 WP/G.F.C.I TYP. @ HVAC UNITS SEE ELECTRICAL SHEETS.
- R FOR RAMP DETAILS REFER TO SHEET S6R



BASED PC 02-109695

REVISIONS		
NO	DATE	DESCRIPTION

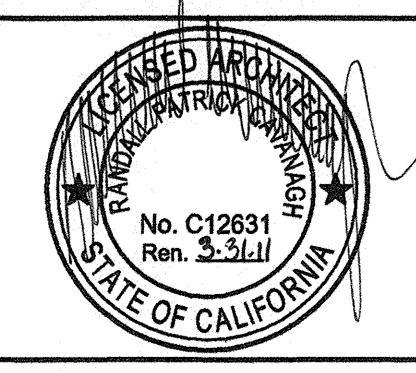
DATE: 08/13/09
 SCALE: NOTED
 DRAWN BY: RS
 SERIAL NO.:

CUSTOMER:
 BAKERSFIELD SCHOOL DISTRICT
 MUNSEY ELEMENTARY SCHOOL

2:12 PITCHED ROOF 24' x 40' RELOCATABLE BUILDINGS
 TYPICAL EXTERIOR ELEVATIONS (SYNTHETIC STUCCO)



APPROVALS:



IDENTIFICATION STAMP
 DIV. OF THE STATE ARCHITECT
 OFFICE OF REGULATION SERVICES

03-112985
 AC, FLS, SS
 DATE: SEP 24 2009

PROJECT No.
A5

THESE DRAWINGS AND SPECIFICATIONS ARE THE PROPERTY OF AMERICAN MODULAR SYSTEMS AND ARE NOT TO BE REPRODUCED, CHANGED OR COPIED IN ANY FORM OR MANNER, NOR ARE THEY TO BE ASSIGNED TO ANY THIRD PARTY WITHOUT THE WRITTEN AUTHORIZATION OF AMERICAN MODULAR SYSTEMS.