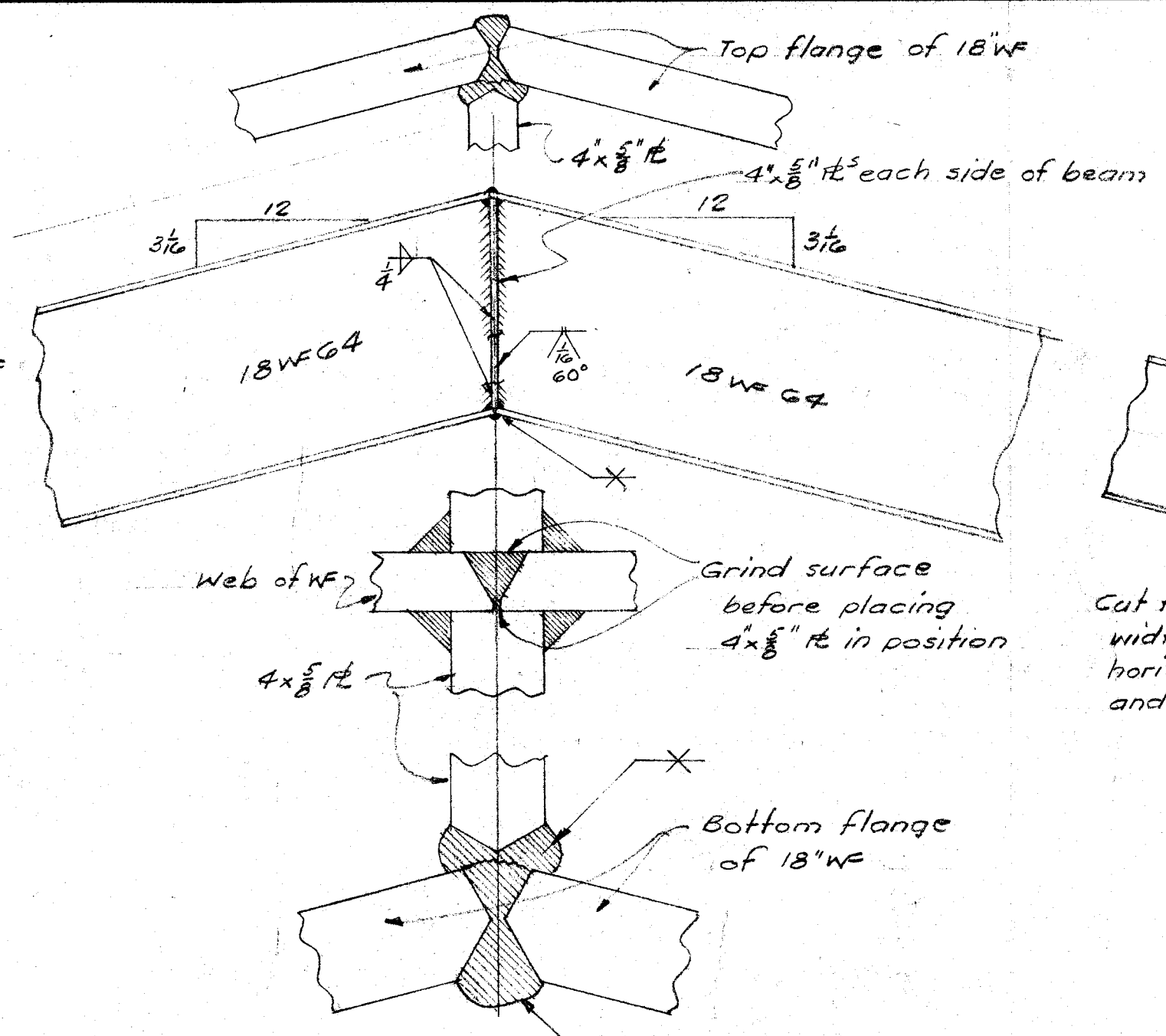
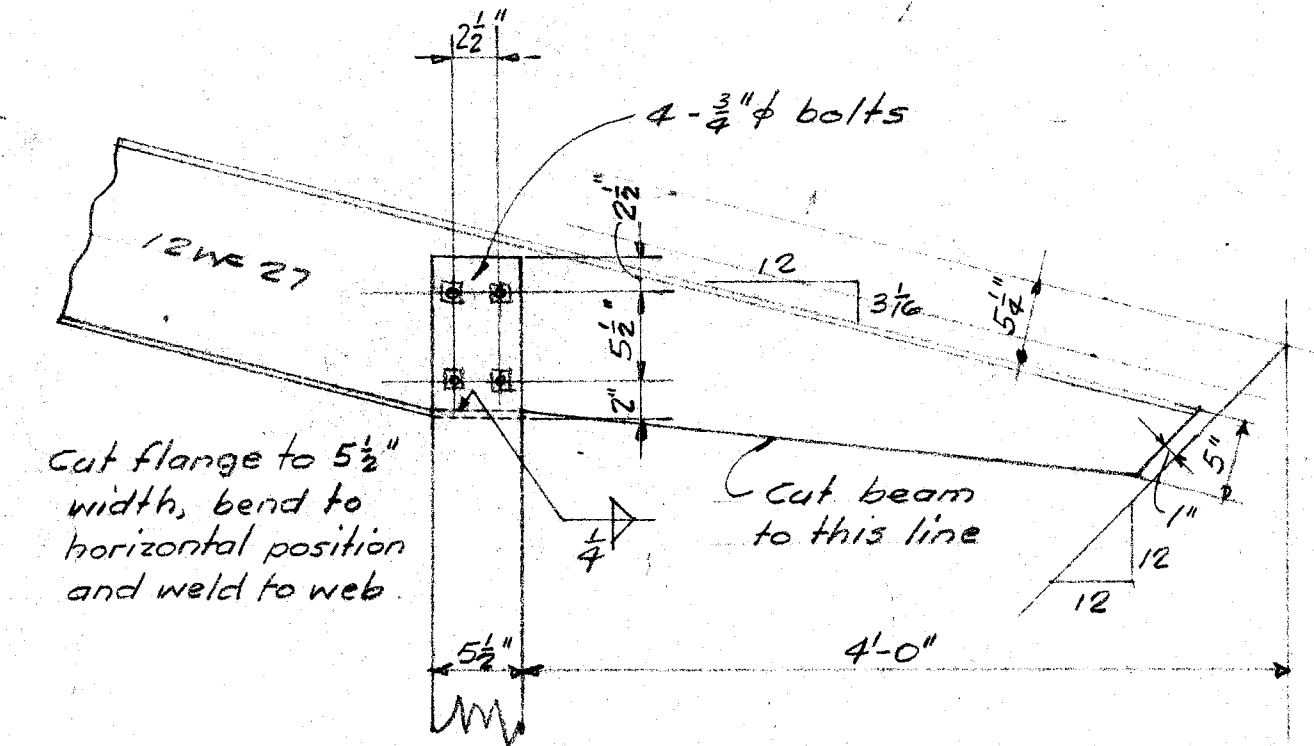


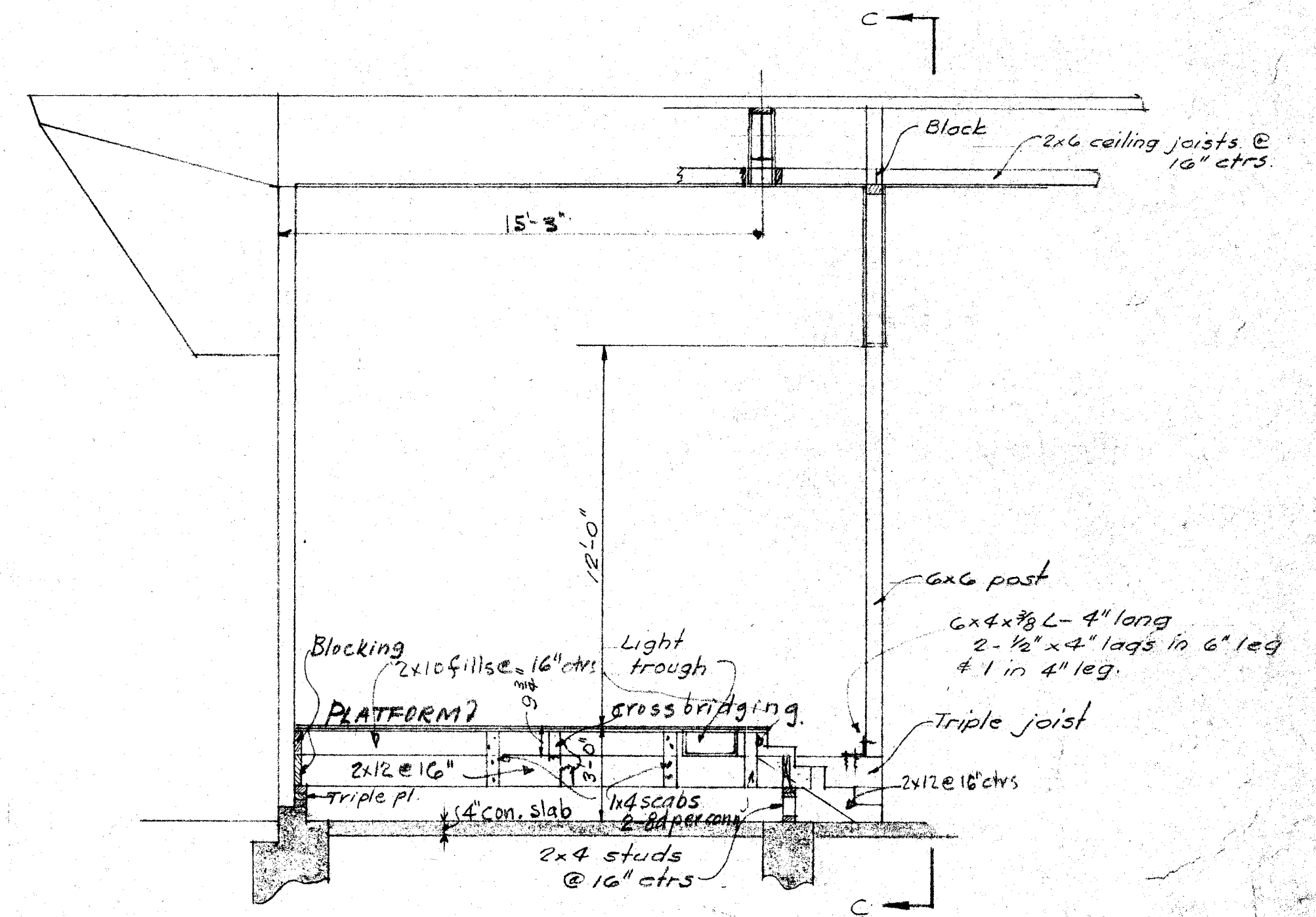
DETAIL A



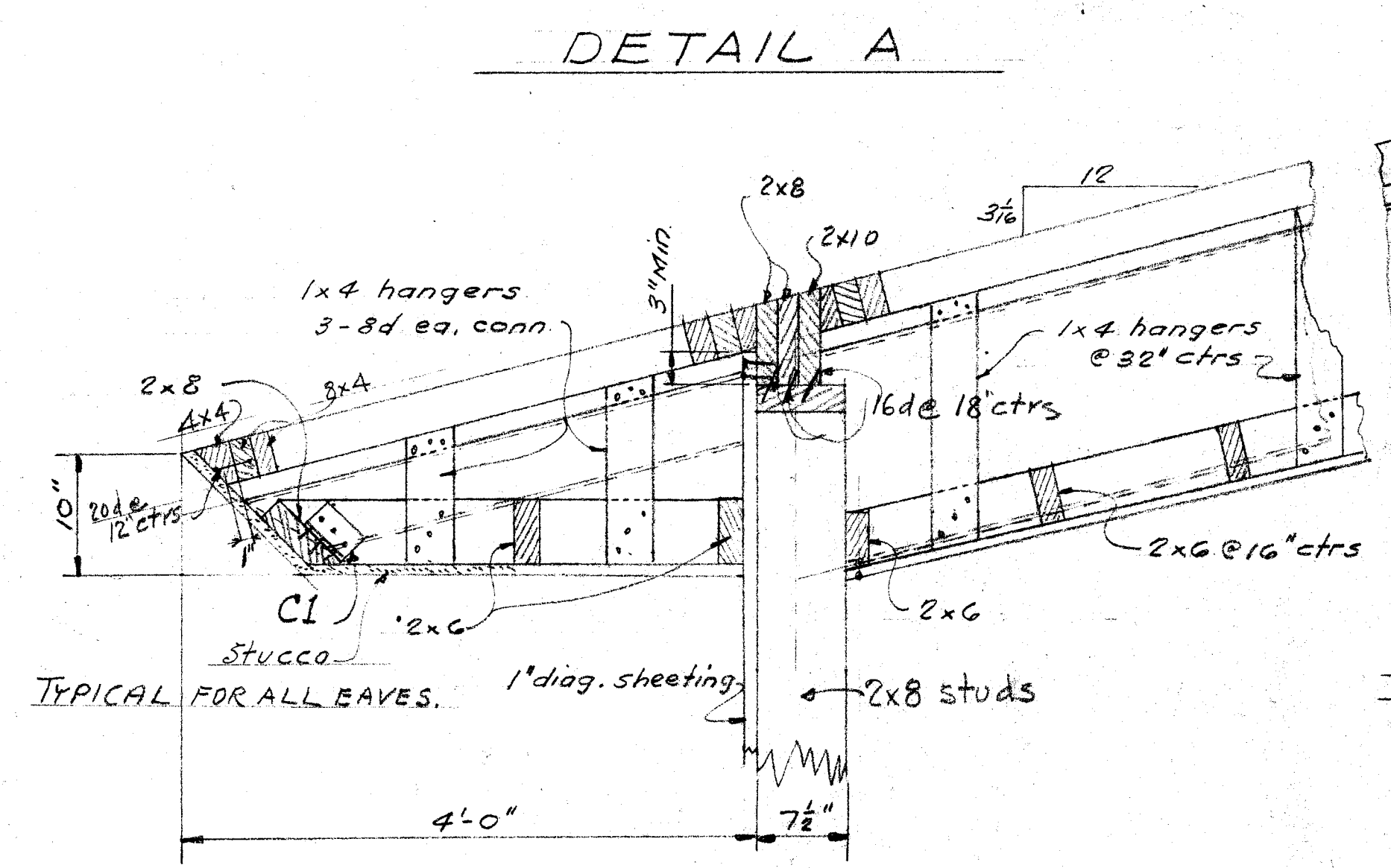
DETAIL B



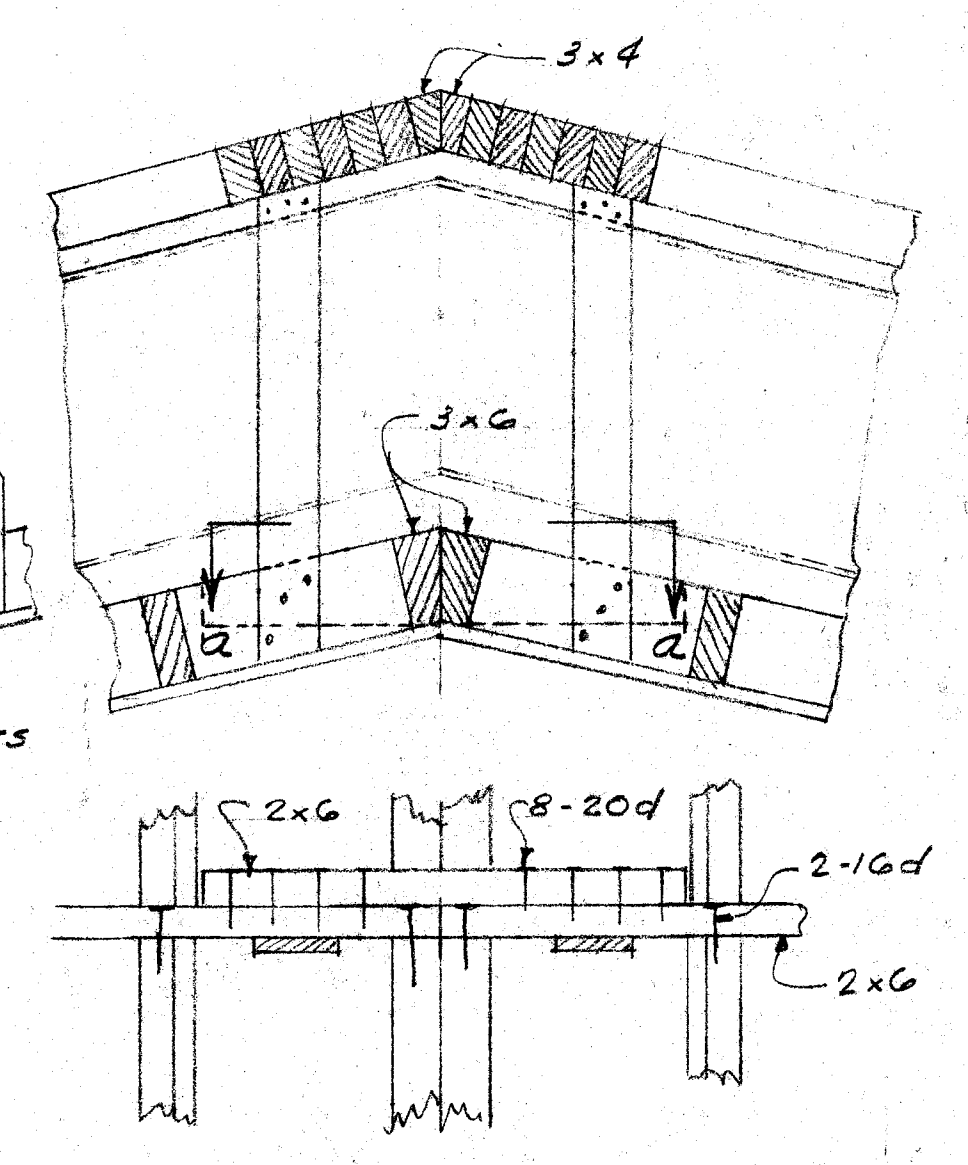
DETAIL C



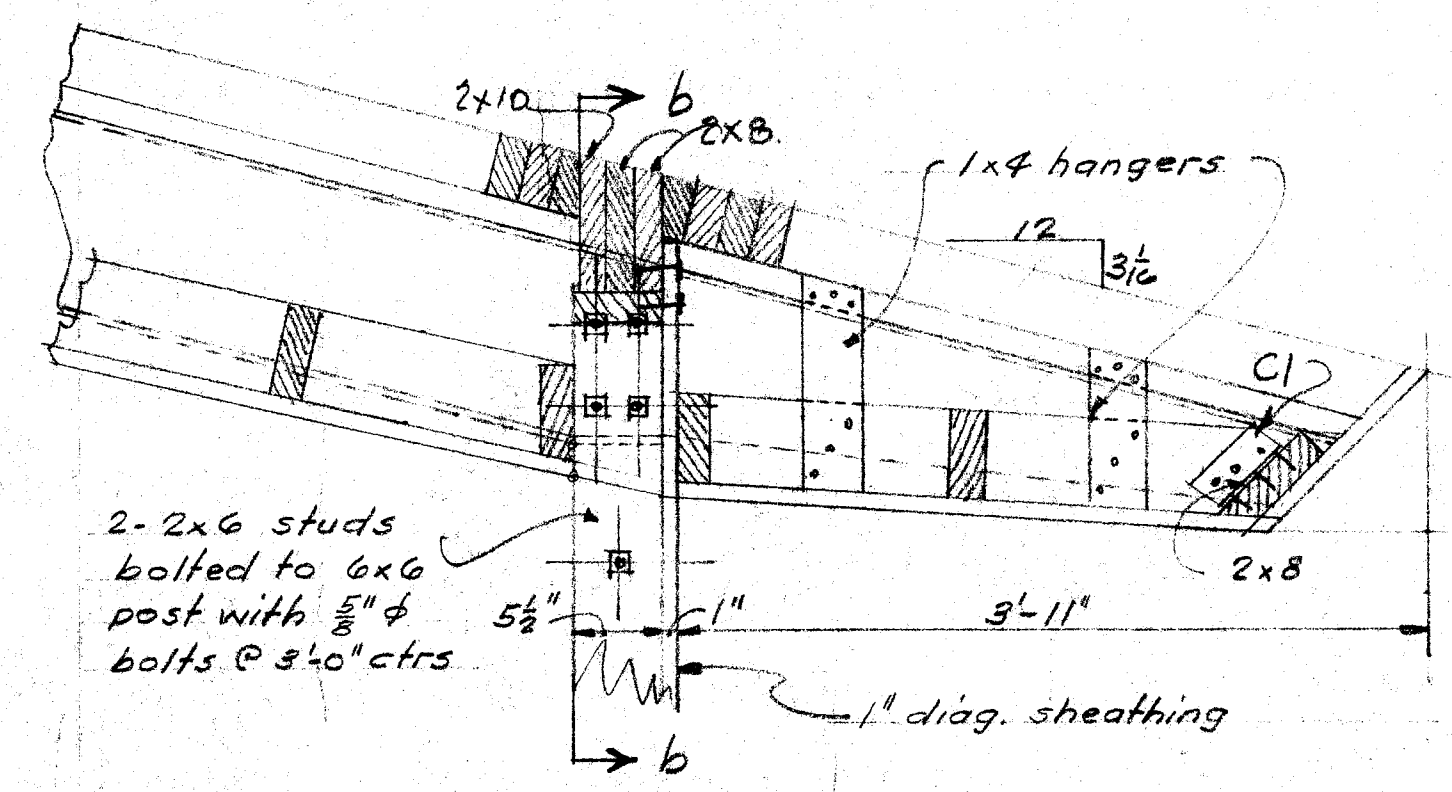
SECTION V-V (S2)
1/2" = 1'-0"



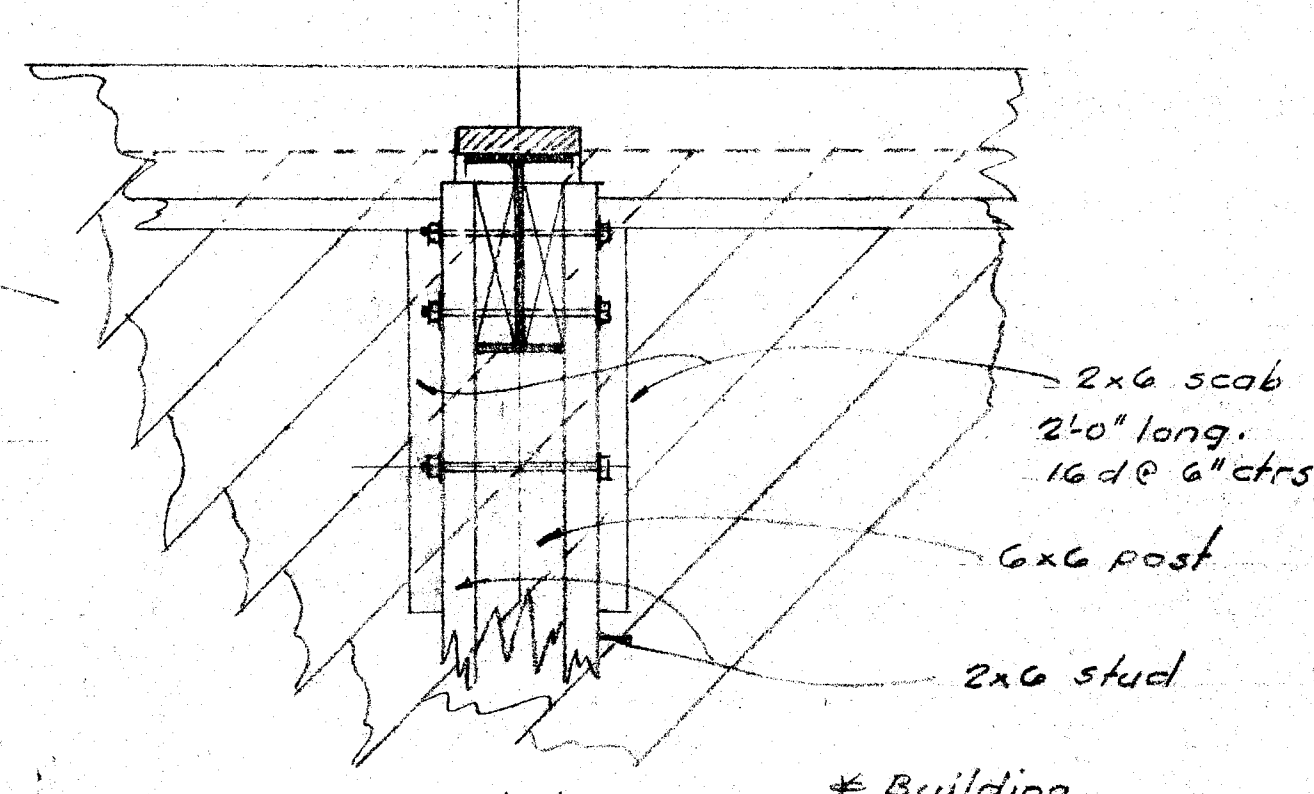
DETAIL D



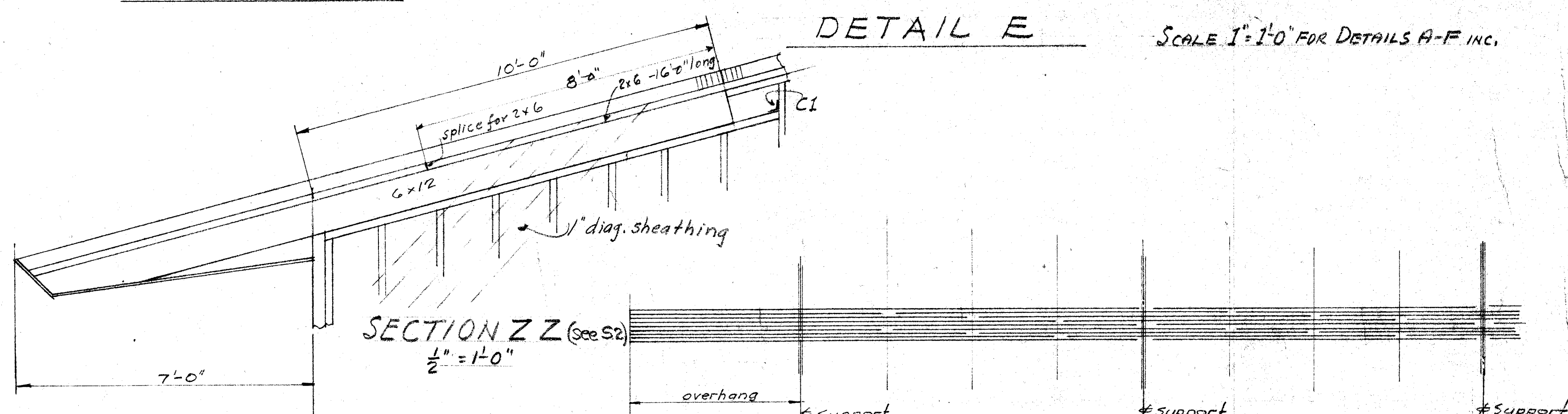
SECTION a-a



DETAIL F



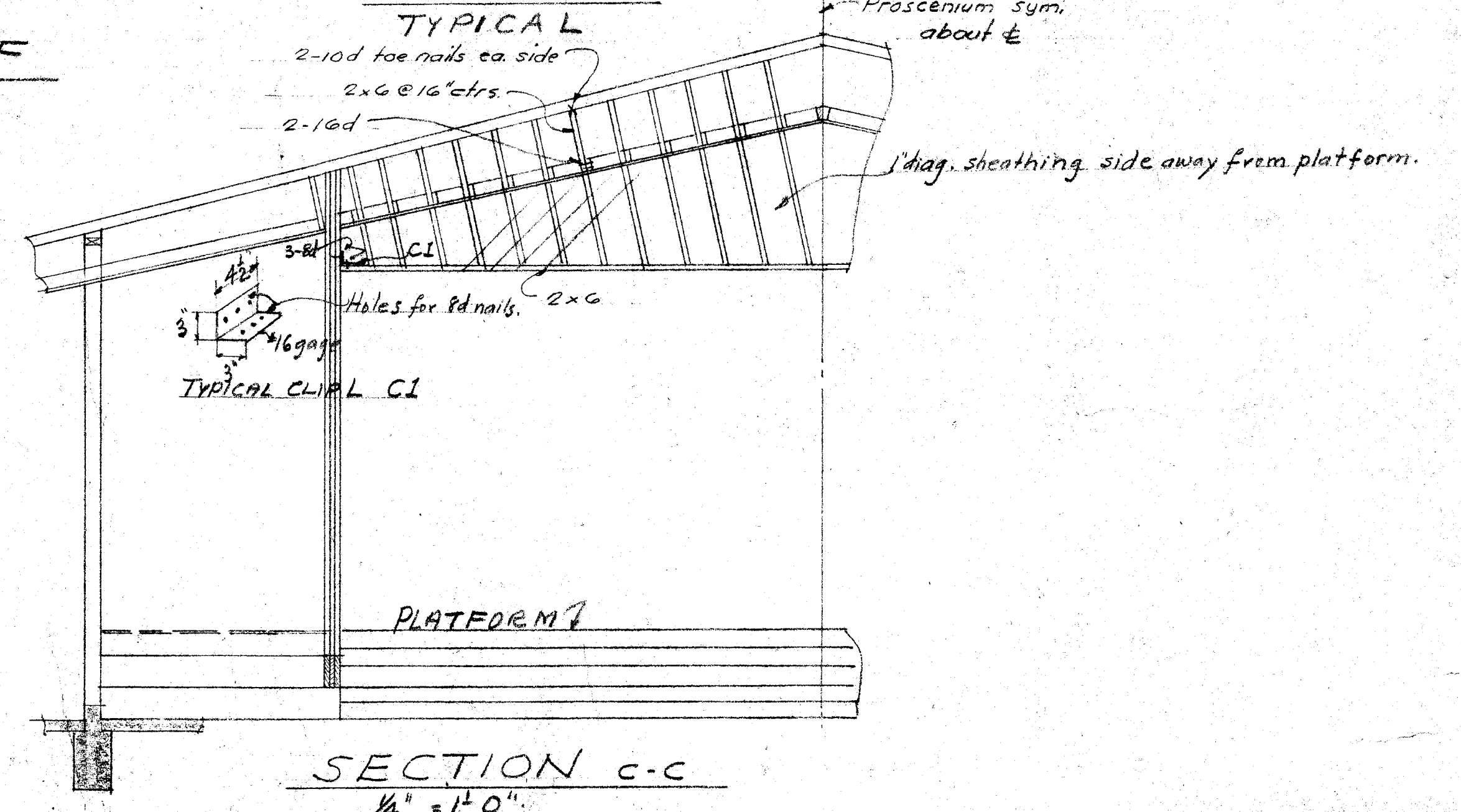
SECTION b-b
TYPICAL



SECTION Z-Z (see S2)
1/2" = 1'-0"

DIAGRAM SHOWING THE LOCATION OF JOINTS OF LAMINATIONS - TYPICAL FOR ALL BUILDINGS

SCALE 1" = 1'-0" FOR DETAILS A-F INC.



SECTION c-c
1/2" = 1'-0"

<p>STATE OF CALIFORNIA DEPARTMENT OF PUBLIC WORKS DIVISION OF CONSTRUCTION 11800 APPROVED OCT - 7 1953 Clunker</p>	<p>BOARD OF EDUCATION APPROVED: PRES. [Signature] SEC. [Signature]</p>	<p>DETAILS UNIT I REAL ROAD SCHOOL</p>	<p>Harold B Hammill HAROLD B. HAMMILL CONSULTING STRUCTURAL ENGINEER REG. 42 STRUCTURAL 131 SAN FRANCISCO, CALIFORNIA</p>	<p>Whitney Biggar WHITNEY BIGGAR ARCHITECT MEMBER AMERICAN INSTITUTE OF ARCHITECTS 3601 STOCKDALE HIGHWAY BAKERSFIELD, CALIFORNIA 29285 REGISTRATION C-1128</p>	<p>PROJECT NO: DRAWN BY: CHECKED BY: DATE: SHEET 54 OF 56</p>
--	--	--	---	---	---