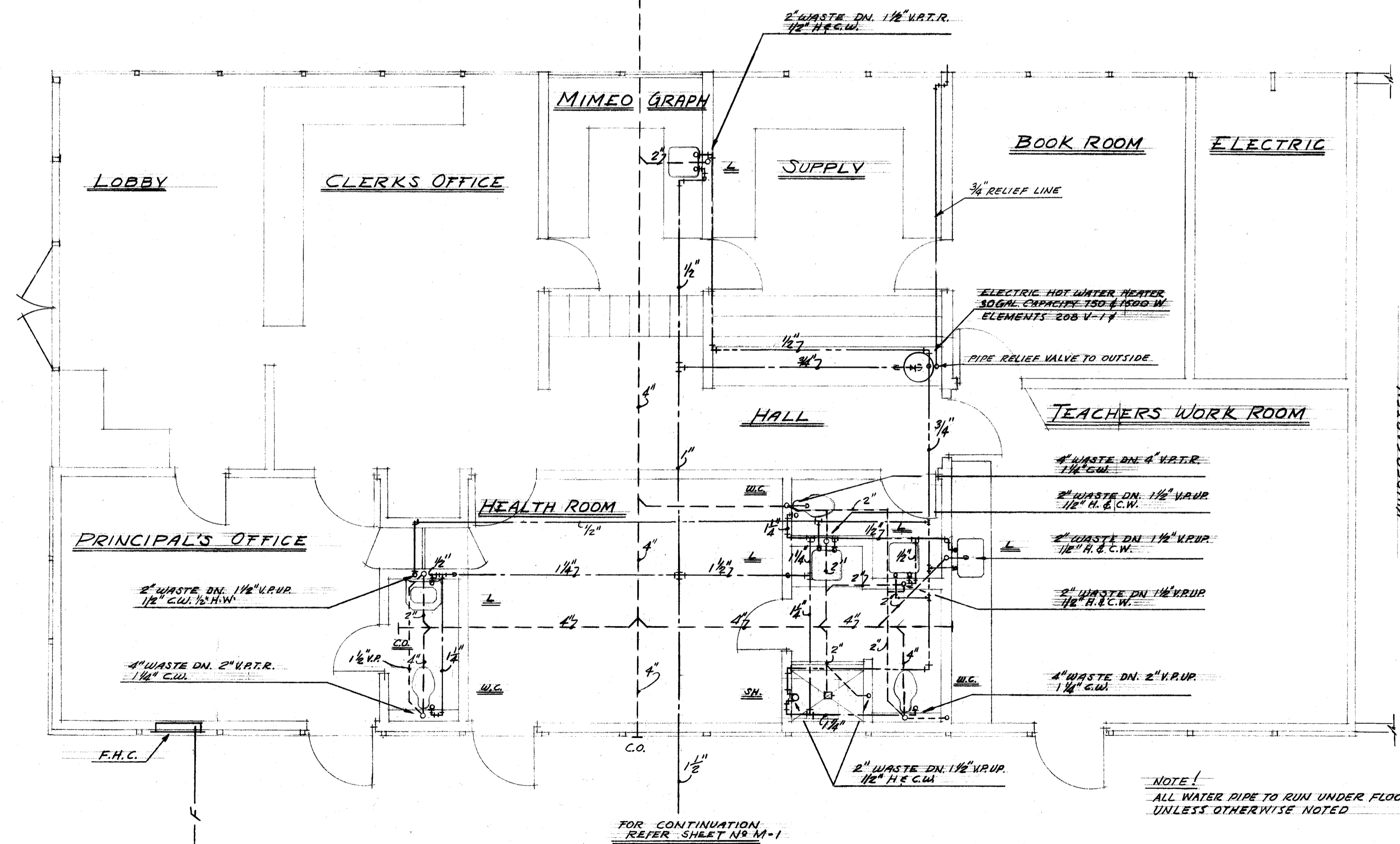


FOR CONTINUATION
REFER SHEET NO M-1

FOR CONTINUATION
REFER SHEET NO M-1



KINDERGARTEN
SEE SHEET M-3

PIPING LEGEND	
COLD WATER	—————
HOT WATER	—————
WASTE & SOIL	—————
VENT	—————

NOTE:
ALL WATER PIPE TO RUN UNDER FLOOR
UNLESS OTHERWISE NOTED

FOR CONTINUATION
SEE SHEET M-1

FOR CONTINUATION
REFER SHEET NO M-1

FLOOR PLAN - ADMINISTRATION AREA - UNIT-2

SCALE 1/4" = 1'-0"

DIVISION OF ARCHITECTURE

STATE OF CALIFORNIA - DEPARTMENT OF PUBLIC WORKS
DIVISION OF ARCHITECTURE
11895 APPROVED OCT - 7 1953
O. W. HEDGECOCK
SEAL

W. A. Stains
W. A. STAINS
CONSULTING ENGINEER
1603 CALIFORNIA AVENUE
BAKERSFIELD, CALIFORNIA
MECHANICAL 5205 ELECTRICAL 4209

BOARD OF EDUCATION
J. S. [Signature] PRES.
Virginia C. Bellinger SEC.

PLUMBING
FLOOR PLAN - ADMINISTRATION AREA
UNIT TWO
REAL ROAD SCHOOL
BAKERSFIELD CALIFORNIA

Whitney Biggar
WHITNEY BIGGAR ARCHITECT
MEMBER AMERICAN INSTITUTE OF ARCHITECTS
3601 STOCKDALE HIGHWAY
BAKERSFIELD, CALIFORNIA
29285 REGISTRATION C-1128

PROJECT NO: 6-53
DRAWN BY:
CHECKED BY:
DATE: 9/4/53
SHEET
M-4
OF 56