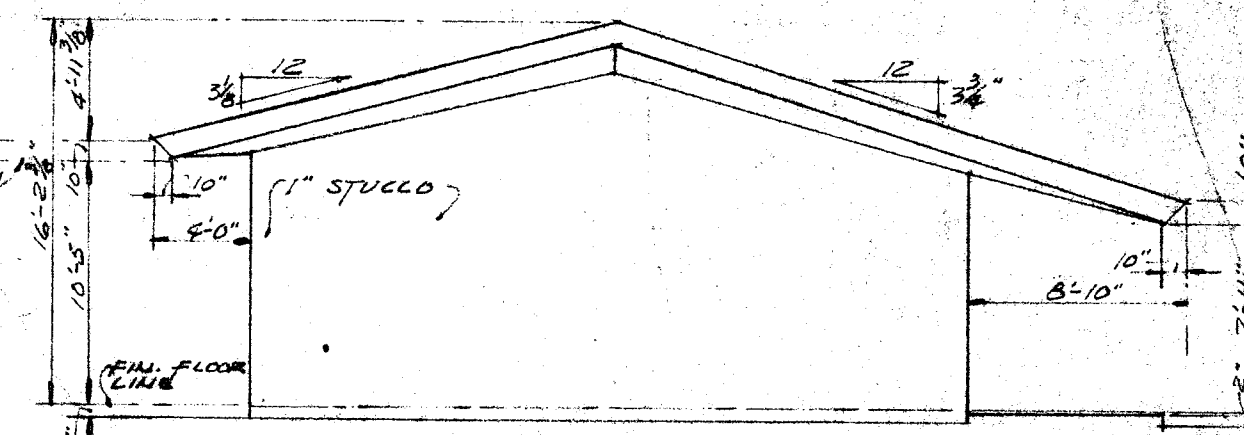
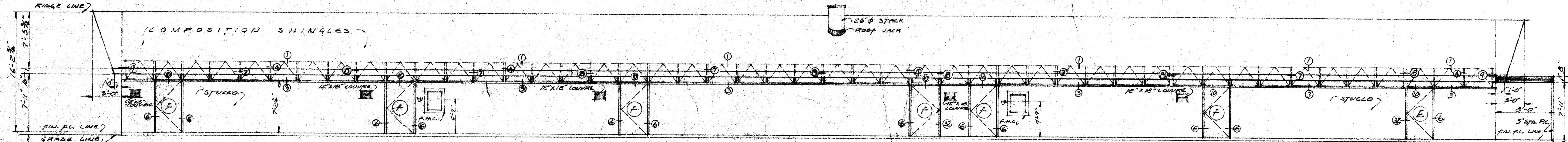


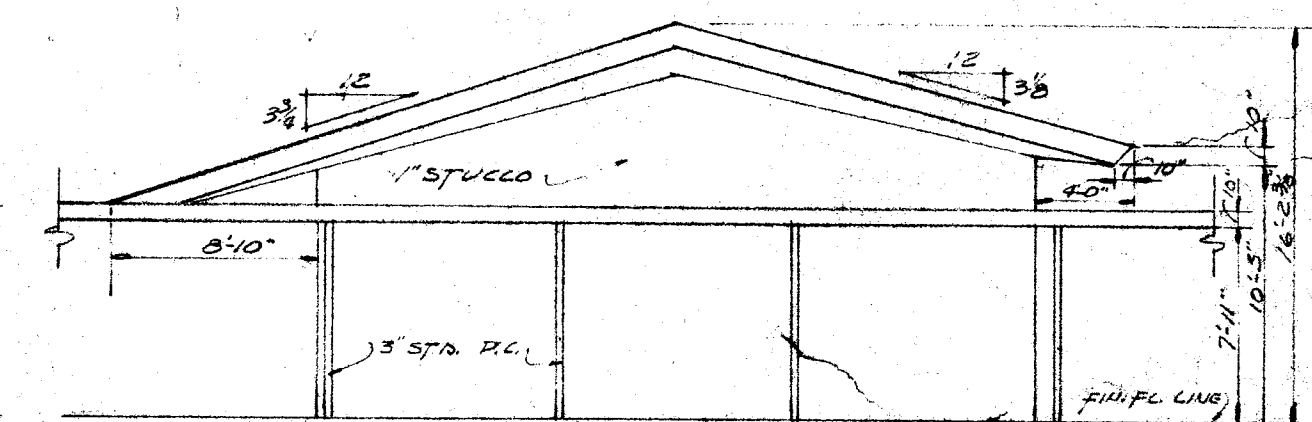
NORTH ELEVATION UNIT 3
SCALE 1/8" = 1'-0"



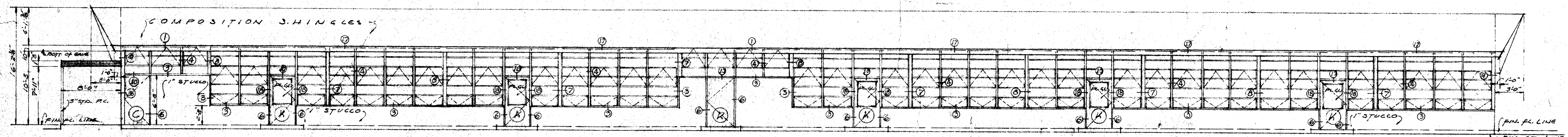
WEST ELEVATION UNITS 3, 4, 5
SCALE 1/8" = 1'-0"



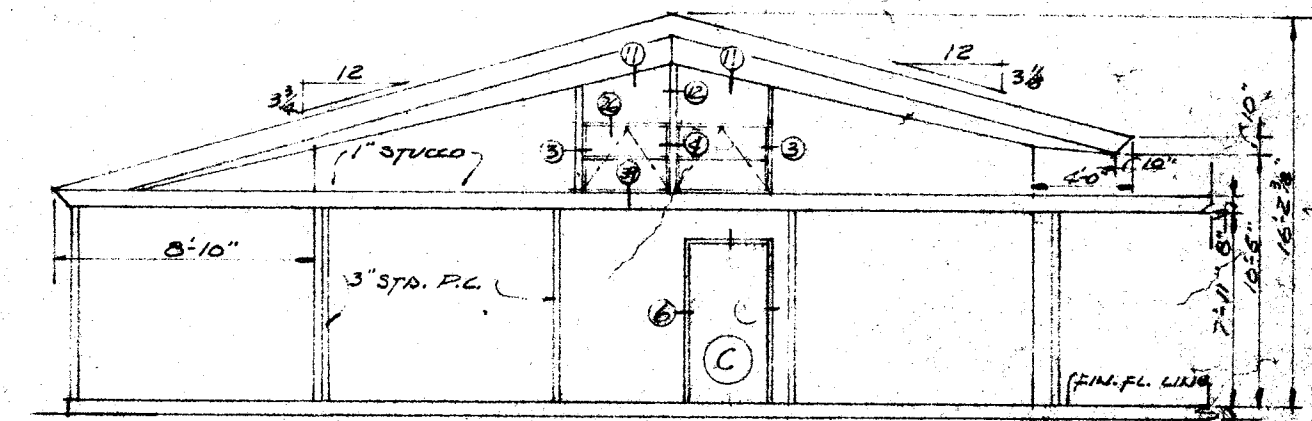
SOUTH ELEVATION UNIT 3
SCALE 1/8" = 1'-0"



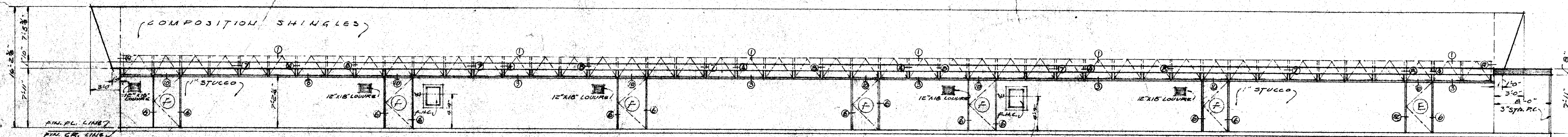
EAST ELEVATION UNITS 3, 4
SCALE 1/8" = 1'-0"



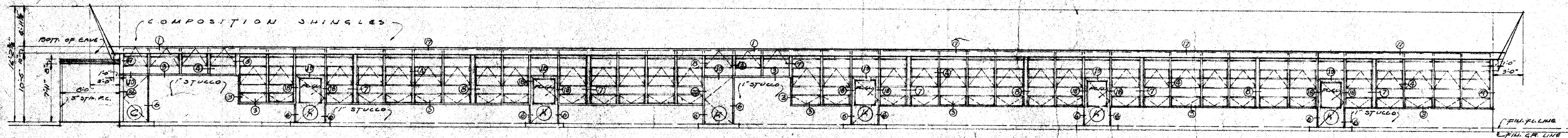
NORTH ELEVATION UNIT 4
SCALE 1/8" = 1'-0"



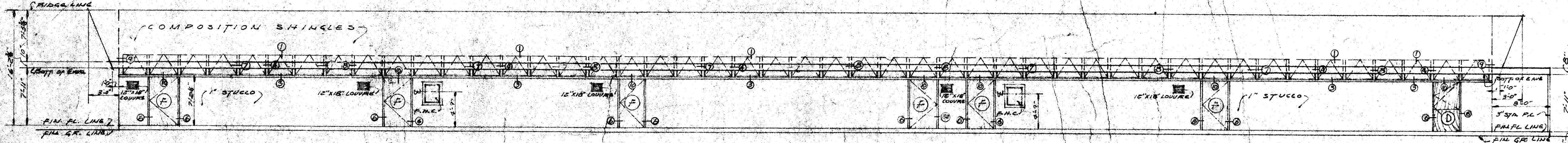
EAST ELEVATION UNIT 5
SCALE 1/8" = 1'-0"



SOUTH ELEVATION UNIT 4
SCALE 1/8" = 1'-0"



NORTH ELEVATION UNIT 5
SCALE 1/8" = 1'-0"



SOUTH ELEVATION UNIT 5
SCALE 1/8" = 1'-0"

DIVISION OF ARCHITECTURE
 BOARD OF EDUCATION
J. P. Tate PRES.
Virginia C. Bellingar SEC.
 APPROVED OCT 1 1953
W. H. ...

ELEVATIONS UNITS THREE, FOUR, FIVE
 REAL ROAD SCHOOL

Whitney Biggar
 WHITNEY BIGGAR ARCHITECT
 MEMBER AMERICAN INSTITUTE OF ARCHITECTS
 3601 STOCKDALE HIGHWAY
 BAKERSFIELD, CALIFORNIA
 29285 REGISTRATION C-1128

PROJECT NO. 6-53
 DRAWN BY BURTON
 CHECKED BY
 DATE 9/2/53
 SHEET A7
 OF 58