

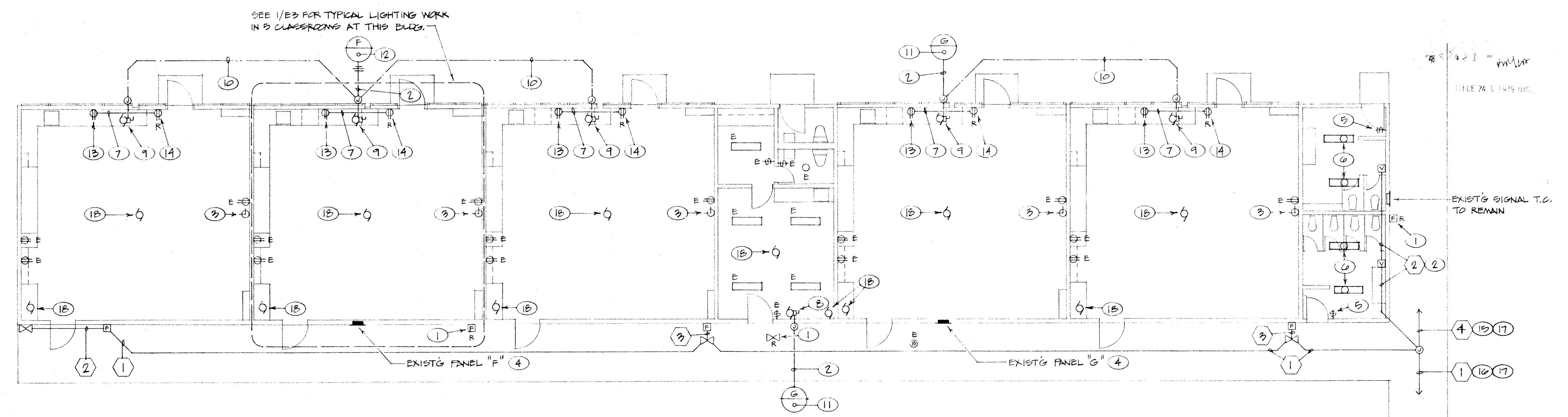
**NOTES ( THIS SHEET ONLY )**

- 1 REMOVE EXISTING FIRE ALARM DEVICE. BLANK OFF BOX, FULL OUT IDLE WIRE. (NOTE: EXISTING WIRING RUNS IN SAME CONDUIT AS CLOCK WIRING. VERIFY ROUTE AT SITE.) REMOVE ANY EXPOSED EMPTY CONDUIT, REFILL EXIST'G CONDUITS REMAINING AS REQ'D.
- 2 VERIFY CONDUIT ROUTE AT SITE. CONCEAL IN ATTIC/WALLS WHERE POSSIBLE. WHERE NOT POSSIBLE TO CONCEAL INSIDE BUILDING USE SURFACE RACEWAY (WIREMOLD #700, PAINT TO MATCH ADJACENT SURFACE).
- 3 RELOCATE EXISTING CLOCK TO CLEAR NEW CEILING. PROVIDE CONDUIT, WIRE AND BOX AS REQUIRED (MATCH EXISTING). BLANK OFF EXISTING BOX. CONTRACTOR MAY FLUSH IN DEVICE OR SURFACE MOUNT, WITH CONCEALED CONDUIT TO EXISTING BOX AT CONTRACTOR'S OPTION.
- 4 REPLACE INTERIOR BUS AND BREAKERS WITH NEW PER 1/E4.
- 5 REPLACE SWITCH(ES) WITH NEW, PROVIDE NEW COVER PLATE.
- 6 REPLACE INCANDESCENT FIXTURE WITH NEW TYPE "C".
- 7 RUN NEW FEED CONCEALED IN ATTIC/WALLS. WHERE NOT POSSIBLE CONVERT TO SURFACE RACEWAY (WIRE-MOLD #700), PAINT TO MATCH ADJACENT SURFACE.
- 8 CONNECT FAN COIL - SEE MECH. DRAWINGS.
- 9 CONNECT UNIT VENTILATOR - SEE MECH. DRAWINGS.
- 10 RUN NEW FEED IN TRENCH WITH MECH. PIPING - SEE MECH. DRAWINGS FOR ROUTE.
- 11 CONNECT TO ONE NEW 20/1 BREAKER IN EXIST'G PANEL - SEE 1/E4.
- 12 CONNECT TO TWO NEW 20/1 BREAKERS IN EXIST'G PANEL - SEE 1/E4.
- 13 NEW CONV. OUTLET ABOVE COUNTER (VERIFY HT. WITH ARCHITECT).
- 14 REMOVE EXIST'G CONV. OUTLET & EXTEND EXIST'G CIRCUIT TO NEW OUTLET. BLANK OFF EXIST'G BOX (NOTE: BOX TO REMAIN ACCESSIBLE).
- 15 TO BLDG. "C" - SEE SHEET #E-5.
- 16 TO BLDG. "E" - SEE SHEET #E-7.
- 17 RUN ON TOP OF CORRIDOR ROOF - PROVIDE 2x4 RND BLOCKING SET IN MASTIK @ 5'-0" O.C. MAX.
- 18 DISCONNECT EXIST'G MECH. EQUIP. BEING REMOVED (SEE MECH. PLANS). RE-ROUTE AND RECONNECT ANY FEED-THRU CIRCUITS, PULL OUT ANY IDLE WIRE, REMOVE ANY EXPOSED EMPTY CONDUIT.

**MUNSEY SCHOOL MODERNIZATION**  
 BAKERSFIELD CITY SCHOOL DISTRICT  
 BAKERSFIELD, CALIFORNIA

APPROVED  
 Director of the State Architect  
 FEB 27 1990  
 Structural Safety Section

ONLY  
 FEB 27 1990



SEE 1/E3 FOR TYPICAL LIGHTING WORK  
IN 9 CLASSROOMS AT THIS BLDG.

FILE 74 3 144 011

EXIST'G SIGNAL T.C.  
TO REMAIN



**ELECTRICAL PLAN - BLDG. "D"**  
SCALE: 1/8" = 1'-0"

Kenneth  
 Design  
 Group  
 architects • planners  
 A.S.A.  
 2115 19th street, bakersfield, ca 93301 • (805) 322-1863

**CORNELIUS ENGINEERING, INC.**  
 Consulting Electrical Engineer  
 918 W. Main St. - Ph. 733-2671  
 Visalia, California 93291  
 Gerald Cornelius Calif. no. 7194

job number  
**8712**

sheet number

**E-6**