



ELECTRICAL ENGINEERING  
 LIGHTING DESIGN  
 CA REGISTRATION NO E13083



5500 MING AVENUE  
 SUITE 251  
 BAKERSFIELD, CA 93309  
 (661)831.7851  
 FAX: (661)831.7813  
 maloney@jmpe.net  
 www.jmpe.net

## SUBMITTAL REVIEW

PROJECT: BCSD Mount Vernon School HVAC & FA

This review is only for general conformance with the design concept of the project and general compliance with the information given in the Contract Documents. Corrections or comments made on the shop drawings during this review do not relieve contractor from compliance with the requirements of the plans and specifications. Approval of a specific item shall not include approval of an assembly of which the item is a component. Contractor is responsible for: dimensions to be confirmed and correlated at the jobsite; information that pertains solely to the fabrication processes or to the names, methods, techniques, sequences and procedures of construction; coordination of the Work of all trades; and for performing work in a safe and satisfactory manner.

### SWITCHGEAR SUBMITTAL

#### ACTION:

Approved  X                       Furnish as Corrected  \_\_\_\_\_   
 Rejected  \_\_\_\_\_                       Revise and Resubmit  \_\_\_\_\_

#### NOTES:

1. Square D I Line "MDP" with 600/3, 400/3, 200/3, 200/3 matches specified.
2. Panels HC, HD, HE NG panelboards match specified.

DATE: 2/6/24

**Prepared By:**

jerry whitbey  
6100 schirra ct  
Bakersfield,CA 93313  
jerry.whitbey@graybar.com  
D:661-835-4362

**Proposal Name:** MT. VERNON ELEMENTARY

**Quote Name:** MT. VERNON ELEMENTARY

---

**Proposal Number:** P-231222-4187499

**Quote Number:** Q-4630945

**Through Addenda Number:** 0

**Sales Representative:** Dave Bruun

**Conditions of Sale**

*This Quotation is subject to Coordinated Project Terms. See <https://www.se.com/us/en/download/document/0100PL0043/>*

Quoted price in currencies other than U.S. Dollars is per the annual Schneider Electric exchange guidance.  
Quote is valid for 30 days. Quoted lead times are approximate and subject to change.

Schneider Electric reserves the right to amend, withdraw or otherwise alter this submission without penalty or charge as a result of any event beyond its control arising from or due to the current Covid-19 epidemic or events subsequent to this epidemic / pandemic including changes in laws, regulations, by laws or direction from a competent authority.

Seq #	Qty	Product Description
1	1	<p><b>Designation : HDP</b>  <b>Product Details:</b>            1 - I-Line MB Panel (INTERIOR)-I-Line Panelboard            Consisting of            480Y/277V 3Ph 4W 60Hz SCCR: 35kA            Fully Rated            Single Main: 600AS/600AT/3P LG Circuit            Breaker 80% Rated            Main Trip Function: LI            Main Trip Unit: Standard Trip Unit            Incoming Conductors: 1 - (2) 2/0 - 500 kcmil            AL Ground Bar            Bus: 600A Rated Aluminum: Tin Plated            36" of Mounting Inches            Type 3R/5/12Box: 68H x 42W x 12.95D            Incoming: Bottom Trim w/ Box            Box Cat No: HC4268WP            Ref. Drawing PBA412 Type: HCP  <b>Feeders:</b>            1 - 600AS/600AT/3P LG Std. LI 80%            1 - 400A/3P LH            2 - 200A/3P JG  <b>Optional Features:</b>            Standard Panel (Box Ahead),Seismic            Qualification -            IBC/ASCE7/CBC/NBCC,Standard Solid            Neutral,Standard Ground Bar,Standard            Mains and Feeders Mechanically            Restrained            Branch User Placement            1 - HC4268WP-PNLBD ENCLOSURE/BOX T-3R/12 68H 42W</p>

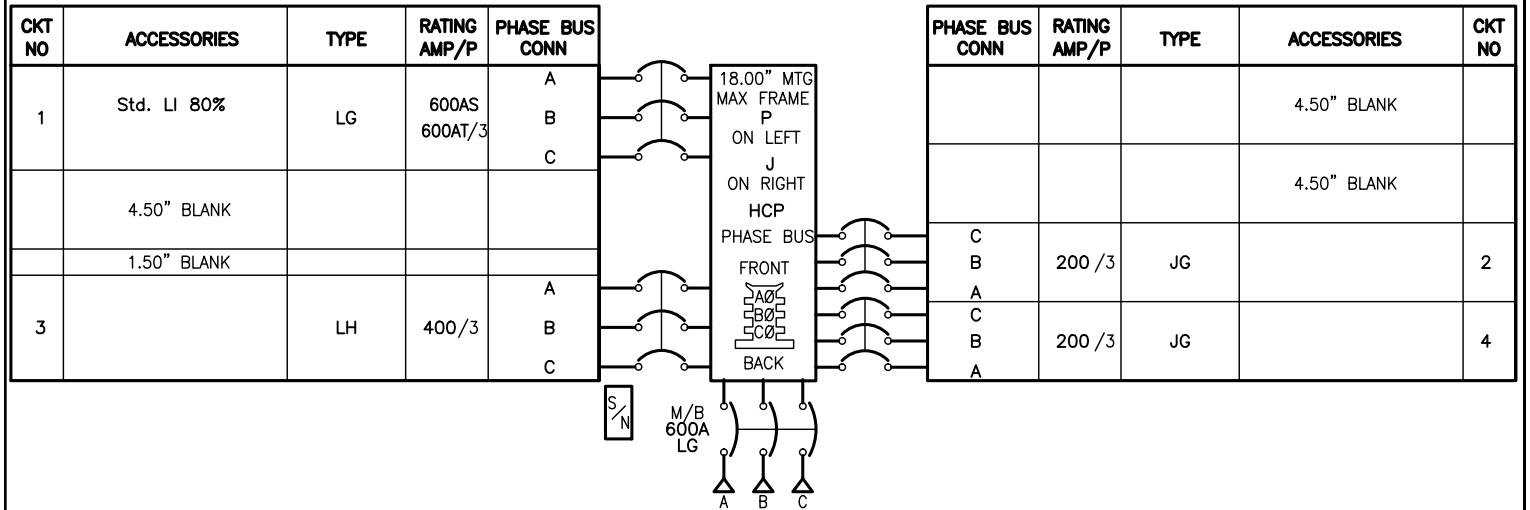
Seq #	Qty	Product Description
2	1	<p><b>Designation : HC</b>  <b>Product Details:</b>            1 - NF ML Panel (INTERIOR)-NF Panelboard            Consisting of            480Y/277V 3Ph 4W 60Hz SCCR: 10kA            Fully Rated            Main Lug Only: 400A            Incoming Conductors: 1 - 1/0 - 750, (2) 1/0 -            350 kcmil            AL Ground Bar            Bus: 400A Rated Aluminum: Tin Plated            42 Circuit Interior            Type 3R/5/12Box: 56H x 20W x 6.5D            Incoming: Bottom Trim w/ Box            Box Cat No: MH56WP            Ref. Drawing: PBA555  <b>Feeders:</b>            10 - 35A/3P EDB  <b>Optional Features:</b>            Standard Panel (Box Ahead),Seismic            Qualification -            IBC/ASCE7/CBC/NBCC,Standard Solid            Neutral,Standard Ground Bar            Branch User Placement            1 - MH56WP-PANELBOARD ENCL/BOX TYPE 3R/12 56H 20W</p>

Seq #	Qty	Product Description
3	1	<p><b>Designation : HD</b>  <b>Product Details:</b>            1 - NF ML Panel (INTERIOR)-NF Panelboard            Consisting of            480Y/277V 3Ph 4W 60Hz SCCR: 10kA            Fully Rated            Main Lug Only: 225A            Incoming Conductors: 1 - #6 - 350 kcmil</p>

AL Ground Bar  
 Bus: 250A Rated Aluminum: Tin Plated  
 42 Circuit Interior  
 Type 3R/5/12Box: 44H x 20W x 6.5D  
 Incoming: Bottom Trim w/ Box  
 Box Cat No: MH44WP  
 Ref. Drawing: PBA555  
 Feeders:  
 5 - 35A/3P EDB  
 Optional Features:  
 Standard Panel (Box Ahead),Seismic  
 Qualification -  
 IBC/ASCE7/CBC/NBCC,Standard Solid  
 Neutral,Standard Ground Bar  
 Branch User Placement  
 1 - MH44WP-PANELBOARD ENCL/BOX TYPE 3R/12 44H 20W

Seq #	Qty	Product Description
4	1	<p><b>Designation :</b> HE  <b>Product Details:</b>                      1 - NF ML Panel (INTERIOR)-NF Panelboard                      Consisting of                      480Y/277V 3Ph 4W 60Hz SCCR: 10kA                      Fully Rated                      Main Lug Only: 225A                      Incoming Conductors: 1 - #6 - 350 kcmil                      AL Ground Bar                      Bus: 250A Rated Aluminum: Tin Plated                      42 Circuit Interior                      Type 3R/5/12Box: 44H x 20W x 6.5D                      Incoming: Bottom Trim w/ Box                      Box Cat No: MH44WP                      Ref. Drawing: PBA555                      Feeders:                      5 - 35A/3P EDB                      Optional Features:                      Standard Panel (Box Ahead),Seismic                      Qualification -                      IBC/ASCE7/CBC/NBCC,Standard Solid                      Neutral,Standard Ground Bar                      Branch User Placement                      1 - MH44WP-PANELBOARD ENCL/BOX TYPE 3R/12 44H 20W</p>

REV	DESCRIPTION	BY	DATE				
-							



PHYSICAL DATA

ENCLOSURE Type 3R/5/12  
 FRONT CAT#: Trim w/Box  
 BOX CAT#: HC4268WP

DIMENSIONS:  
 68"(1727mm)Hx42"(1067mm)Wx12.95"(329mm)D  
 WIRE BENDING SPACE:  
 TOP - 11.66"(296mm)  
 BOTTOM - 16.18"(411mm)  
 LEFT SIDE - 8.66"(220mm)  
 RIGHT SIDE - 8.77"(223mm)

PBA: 412  
 BUSSING: 600A RATED ALUMINUM BUS  
 Tin Plated

OPTIONAL FEATURES:  
 SEISMICALLY QUALIFIED : IBC/ASCE7/CBC/NBCC  
 BRANCH USER PLACEMENT  
 ALUMINUM SOLID NEUTRAL  
 ALUMINUM GROUND BAR  
 Maximum Panel Weight 660.  
 Depth Center of Gravity 12.9  
 (Continued on next page.)

ELECTRICAL DATA

SYSTEM: 480Y/277V 3Ph 4W 60Hz  
 System Ampacity: 600A  
 35kA SYMS. SCCR  
 Fully Rated  
 MAIN: MAIN BREAKER LG 600AS/600AT  
 ACC: STD LI  
 Bottom FEED  
 35kA AIR  
 INCOMING CONDUCTORS(S) PER NEC, CEC, NOM:  
 Wire Bending Space:  
 Phase Lugs:1 - (2) 2/0 - 500 kcmil  
 -----BRANCH SUMMATION-----  
 1 - 600A/3P LG STD LI      1 - 400A/3P LH  
 2 - 200A/3P JG

JOB NAME: MT VERNON ELEMENTARY	EQUIPMENT DESIGNATION: HDP
JOB LOCATION:	EQUIPMENT TYPE: I-Line (Circuit Breaker Type) PANEL 1 OF 1
DRAWN BY: (Q2C)	DRAWING TYPE: ONE LINE DIAGRAM
ENGR:	<b>SQUARE D</b> <small>by Schneider Electric</small>
DATE: January 26 2024	DWG# OQ-4630945-135469162-01
DRAWING STATUS: QUOTE	PG 1 OF 2 REV -

REV	DESCRIPTION	BY	DATE				
-	-----	--	--/--/--	-	-----	--	--/--/--

PHYSICAL DATA CONTINUED

Elevation Center of Gravity 34.0

Vertical Center of Gravity 21.0

JOB NAME:	MT VERNON ELEMENTARY	EQUIPMENT DESIGNATION:	HDP
JOB LOCATION:		EQUIPMENT TYPE:	I-Line (Circuit Breaker Type) PANEL 1 OF 1
DRAWN BY:	(Q2C)	DRAWING TYPE:	ONE LINE DIAGRAM
ENGR:		<b>SQUARE D</b> <small>by Schneider Electric</small>	
DATE:	January 26 2024	DWG#	0Q-4630945-135469162-01
DRAWING STATUS:	QUOTE	PG	2 OF 2 REV -

REV	DESCRIPTION	BY	DATE	--	----	---	---/---/---
-	-----	--	---/---/---	-	-----	---	---/---/---

## REQUIREMENTS FOR SEISMIC RATING

SQUARE D PANELBOARDS HAVE BEEN TESTED TO IBC/ASCE7/CBC/NBCC.

THE PANELBOARD TYPES LISTED BELOW MEET THE IBC/ASCE7/CBC/NBCC.

PANELBOARD TYPE	ENCLOSURE TYPE
NQ	TYPE 1, 3R, 5, 12, 4/4X (SS)
NQ COLUMN WIDTH	TYPE 1
NF (STANDARD OR COLUMN WIDTH)	TYPE 1, 3R, 5, 12, 4/4X (SS)
I-LINE	TYPE 1, 3R, 5, 12, 4/4X (SS)
QMB	TYPE 1, 3R, 5, 12, 4/4X (SS)

### GUIDELINES:

- 1) BOLT-ON CIRCUIT BREAKERS ARE REQUIRED ON NQ AND NF PANELBOARDS.
- 2) ENCLOSURES MUST BE SECURED TO THE WALL OR STRUCTURE BY UTILIZING ALL MOUNTING HOLES PROVIDED IN THE ENCLOSURE AND SECURED WITH SAE GRADE 5 STEEL BOLTS SIZED PER THE MOUNTING HOLES.

### ANCHORING CONDITIONS

TO MAINTAIN SEISMIC QUALIFICATIONS, EQUIPMENT MUST BE INSTALLED PER MANUAL (SEE GENERAL NOTES) IN ADDITION TO ANY SEISMIC ANCHORING DETAILS PROVIDED BY OTHERS. DO NOT INSTALL EQUIPMENT BEFORE APPROVED SEISMIC ANCHORING DETAILS HAVE BEEN OBTAINED AND SITE PREPARATIONS HAVE BEEN MADE IN ACCORDANCE WITH THE APPROVED SEISMIC ANCHORING DETAILS. ALL POST-INSTALLED ANCHORS SHALL BE APPROVED FOR SEISMIC LOADS.

### CENTER OF GRAVITY:


THE CG INFORMATION PROVIDED BELOW SHOULD ONLY BE USED FOR SEISMIC ANCHORING CALCULATIONS.

ELEVATION CENTER OF GRAVITY: 34.0	"ABOVE BOTTOM OF ENCLOSURE
DEPTH CENTER OF GRAVITY: 12.9	"FROM BACK WALL OF ENCLOSURE
VERTICAL CENTER OF GRAVITY: 21.0	"FROM LEFT WALL OF ENCLOSURE

### SECTION WEIGHT:

THE WEIGHTS GIVEN BELOW ARE THE MAXIMUM FOR EACH SECTION AND SHOULD BE USED FOR CALCULATING SEISMIC ANCHORING REQUIREMENTS

MAXIMUM PANEL WEIGHT: 660. LBS / 299.KGS

JOB NAME: MT VERNON ELEMENTARY	EQUIPMENT DESIGNATION: HDP
JOB LOCATION:	EQUIPMENT TYPE: I-Line (Circuit Breaker Type) PANEL 1 OF 1
DRAWN BY: (Q2C)	DRAWING TYPE: ONE LINE DIAGRAM
ENGR:	 <small>by Schneider Electric</small>
DATE: January 26 2024	
DRAWING STATUS: QUOTE	DWG# OQ-4630945-135469162-S1 PG 1 OF 1 REV -

REV	DESCRIPTION	BY	DATE	---	---	---	---
-	----	--	---/---/---	-	----	--	---/---/---

CKT NO	ACCESSORIES	TYPE	RATING AMP/P		RATING AMP/P	TYPE	ACCESSORIES	CKT NO	
1								2	
3		EDB	35/3		35/3	EDB		4	
5								6	
7								8	
9		EDB	35/3		35/3	EDB		10	
11								12	
13								14	
15		EDB	35/3		35/3	EDB		16	
17								18	
19								20	
21		EDB	35/3		35/3	EDB		22	
23								24	
25								26	
27		EDB	35/3		35/3	EDB		28	
29								30	
31	BLANK							BLANK	32
33	BLANK							BLANK	34
35	BLANK							BLANK	36
37	BLANK							BLANK	38
39	BLANK							BLANK	40
41	BLANK							BLANK	42



### PHYSICAL DATA

ENCLOSURE Type 3R/5/12  
 FRONT CAT#: Trim w/Box  
 BOX CAT#: MH56WP

DIMENSIONS:  
 56"(1422mm)Hx20"(508mm)Wx6.5"(165mm)D

WIRE BENDING SPACE:  
 TOP - 12.25"(312)mm  
 BOTTOM - 17"(432)mm  
 SIDE - 4.1"(105)mm

PBA: 555

BUSSING: 400A RATED ALUMINUM BUS  
 Tin Plated

OPTIONAL FEATURES:  
 SEISMICALLY QUALIFIED : IBC/ASCE7/CBC/NBCC  
 BRANCH USER PLACEMENT  
 ALUMINUM SOLID NEUTRAL  
 ALUMINUM GROUND BAR  
 Maximum Panel Weight 193.  
 Depth Center of Gravity 6.5  
 Elevation Center of Gravity 28.0  
 Vertical Center of Gravity 10.0

### ELECTRICAL DATA

SYSTEM: 480Y/277V 3Ph 4W 60Hz  
 System Ampacity: 400A  
 10kA SYMS. SCCR  
 Fully Rated

MAIN: MAIN LUGS : 400A  
 Bottom FEED  
 INCOMING CONDUCTORS(S) PER NEC, CEC, NOM:  
 Wire Bending Space:  
 Phase Lugs:1 - 1/0 - 750, (2) 1/0 - 350 kcmil

-----BRANCH SUMMATION-----  
 10 - 35A/3P EDB

JOB NAME:	MT VERNON ELEMENTARY	EQUIPMENT DESIGNATION:	HC
JOB LOCATION:		EQUIPMENT TYPE:	NF (Circuit Breaker Type) PANEL 1 OF 1
DRAWN BY:	(Q2C)	DRAWING TYPE:	ONE LINE DIAGRAM
ENGR:			
DATE:	January 26 2024		
DRAWING STATUS:	QUOTE	DWG#	0Q-4630945-135508146-01
		PG	1 OF 1
		REV	-



REV	DESCRIPTION	BY	DATE	--	----	---	---/---/---
-	-----	--	---/---/---	-	-----	---	---/---/---

## REQUIREMENTS FOR SEISMIC RATING

SQUARE D PANELBOARDS HAVE BEEN TESTED TO IBC/ASCE7/CBC/NBCC.

THE PANELBOARD TYPES LISTED BELOW MEET THE IBC/ASCE7/CBC/NBCC.

PANELBOARD TYPE	ENCLOSURE TYPE
NQ	TYPE 1, 3R, 5, 12, 4/4X (SS)
NQ COLUMN WIDTH	TYPE 1
NF (STANDARD OR COLUMN WIDTH)	TYPE 1, 3R, 5, 12, 4/4X (SS)
I-LINE	TYPE 1, 3R, 5, 12, 4/4X (SS)
QMB	TYPE 1, 3R, 5, 12, 4/4X (SS)

### GUIDELINES:

- 1) BOLT-ON CIRCUIT BREAKERS ARE REQUIRED ON NQ AND NF PANELBOARDS.
- 2) ENCLOSURES MUST BE SECURED TO THE WALL OR STRUCTURE BY UTILIZING ALL MOUNTING HOLES PROVIDED IN THE ENCLOSURE AND SECURED WITH SAE GRADE 5 STEEL BOLTS SIZED PER THE MOUNTING HOLES.

### ANCHORING CONDITIONS

TO MAINTAIN SEISMIC QUALIFICATIONS, EQUIPMENT MUST BE INSTALLED PER MANUAL (SEE GENERAL NOTES) IN ADDITION TO ANY SEISMIC ANCHORING DETAILS PROVIDED BY OTHERS. DO NOT INSTALL EQUIPMENT BEFORE APPROVED SEISMIC ANCHORING DETAILS HAVE BEEN OBTAINED AND SITE PREPARATIONS HAVE BEEN MADE IN ACCORDANCE WITH THE APPROVED SEISMIC ANCHORING DETAILS. ALL POST-INSTALLED ANCHORS SHALL BE APPROVED FOR SEISMIC LOADS.

### CENTER OF GRAVITY:


THE CG INFORMATION PROVIDED BELOW SHOULD ONLY BE USED FOR SEISMIC ANCHORING CALCULATIONS.

ELEVATION CENTER OF GRAVITY: 28.0	"ABOVE BOTTOM OF ENCLOSURE
DEPTH CENTER OF GRAVITY: 6.5	"FROM BACK WALL OF ENCLOSURE
VERTICAL CENTER OF GRAVITY: 10.0	"FROM LEFT WALL OF ENCLOSURE

### SECTION WEIGHT:

THE WEIGHTS GIVEN BELOW ARE THE MAXIMUM FOR EACH SECTION AND SHOULD BE USED FOR CALCULATING SEISMIC ANCHORING REQUIREMENTS

MAXIMUM PANEL WEIGHT: 193. LBS / 87.6KGS

JOB NAME: MT VERNON ELEMENTARY	EQUIPMENT DESIGNATION: HC
JOB LOCATION:	EQUIPMENT TYPE: NF (Circuit Breaker Type) PANEL 1 OF 1
DRAWN BY: (Q2C)	DRAWING TYPE: ONE LINE DIAGRAM
ENGR:	 <small>by Schneider Electric</small>
DATE: January 26 2024	
DRAWING STATUS: QUOTE	DWG# OQ-4630945-135508146-S1 PG 1 OF 1 REV -

REV	DESCRIPTION	BY	DATE	---	---	---	---
-	----	--	---/---/---	-	---	---	---

CKT NO	ACCESSORIES	TYPE	RATING AMP/P		RATING AMP/P	TYPE	ACCESSORIES	CKT NO
1								2
3		EDB	35/3		35/3	EDB		4
5								6
7								8
9		EDB	35/3		35/3	EDB		10
11								12
13							BLANK	14
15		EDB	35/3				BLANK	16
17							BLANK	18
19	BLANK						BLANK	20
21	BLANK						BLANK	22
23	BLANK						BLANK	24
25	BLANK						BLANK	26
27	BLANK						BLANK	28
29	BLANK						BLANK	30
31	BLANK						BLANK	32
33	BLANK						BLANK	34
35	BLANK						BLANK	36
37	BLANK						BLANK	38
39	BLANK						BLANK	40
41	BLANK						BLANK	42

PHYSICAL DATA

ENCLOSURE Type 3R/5/12  
 FRONT CAT#: Trim w/Box  
 BOX CAT#: MH44WP

DIMENSIONS:  
 44"(1118mm)Hx20"(508mm)Wx6.5"(165mm)D

WIRE BENDING SPACE:  
 TOP - 5"(127)mm  
 BOTTOM - 13.25"(337)mm  
 SIDE - 4.1"(105)mm

PBA: 555

BUSSING: 250A RATED ALUMINUM BUS  
 Tin Plated

OPTIONAL FEATURES:  
 SEISMICALLY QUALIFIED : IBC/ASCE7/CBC/NBCC  
 BRANCH USER PLACEMENT  
 ALUMINUM SOLID NEUTRAL  
 ALUMINUM GROUND BAR  
 Maximum Panel Weight 151.  
 Depth Center of Gravity 6.5  
 Elevation Center of Gravity 22.0  
 Vertical Center of Gravity 10.0

ELECTRICAL DATA

SYSTEM: 480Y/277V 3Ph 4W 60Hz  
 System Ampacity: 225A  
 10kA SYMS. SCCR  
 Fully Rated

MAIN: MAIN LUGS : 225A  
 Bottom FEED  
 INCOMING CONDUCTORS(S) PER NEC, CEC, NOM:  
 Wire Bending Space:  
 Phase Lugs:1 - #6 - 350 kcmil

-----BRANCH SUMMATION-----  
 5 - 35A/3P EDB

JOB NAME:	MT VERNON ELEMENTARY	EQUIPMENT DESIGNATION:	HD
JOB LOCATION:		EQUIPMENT TYPE:	NF (Circuit Breaker Type) PANEL 1 OF 1
DRAWN BY:	(Q2C)	DRAWING TYPE:	ONE LINE DIAGRAM
ENGR:			
DATE:	January 26 2024	DWG#	0Q-4630945-135509209-01
DRAWING STATUS:	QUOTE	PG	1 OF 1 REV -

REV	DESCRIPTION	BY	DATE	--	----	---	---/---/---
-	-----	--	---/---/---	-	-----	---	---/---/---

## REQUIREMENTS FOR SEISMIC RATING

SQUARE D PANELBOARDS HAVE BEEN TESTED TO IBC/ASCE7/CBC/NBCC.

THE PANELBOARD TYPES LISTED BELOW MEET THE IBC/ASCE7/CBC/NBCC.

PANELBOARD TYPE	ENCLOSURE TYPE
NQ	TYPE 1, 3R, 5, 12, 4/4X (SS)
NQ COLUMN WIDTH	TYPE 1
NF (STANDARD OR COLUMN WIDTH)	TYPE 1, 3R, 5, 12, 4/4X (SS)
I-LINE	TYPE 1, 3R, 5, 12, 4/4X (SS)
QMB	TYPE 1, 3R, 5, 12, 4/4X (SS)

### GUIDELINES:

- 1) BOLT-ON CIRCUIT BREAKERS ARE REQUIRED ON NQ AND NF PANELBOARDS.
- 2) ENCLOSURES MUST BE SECURED TO THE WALL OR STRUCTURE BY UTILIZING ALL MOUNTING HOLES PROVIDED IN THE ENCLOSURE AND SECURED WITH SAE GRADE 5 STEEL BOLTS SIZED PER THE MOUNTING HOLES.

### ANCHORING CONDITIONS

TO MAINTAIN SEISMIC QUALIFICATIONS, EQUIPMENT MUST BE INSTALLED PER MANUAL (SEE GENERAL NOTES) IN ADDITION TO ANY SEISMIC ANCHORING DETAILS PROVIDED BY OTHERS. DO NOT INSTALL EQUIPMENT BEFORE APPROVED SEISMIC ANCHORING DETAILS HAVE BEEN OBTAINED AND SITE PREPARATIONS HAVE BEEN MADE IN ACCORDANCE WITH THE APPROVED SEISMIC ANCHORING DETAILS. ALL POST-INSTALLED ANCHORS SHALL BE APPROVED FOR SEISMIC LOADS.

### CENTER OF GRAVITY:


THE CG INFORMATION PROVIDED BELOW SHOULD ONLY BE USED FOR SEISMIC ANCHORING CALCULATIONS.

ELEVATION CENTER OF GRAVITY: 22.0	"ABOVE BOTTOM OF ENCLOSURE
DEPTH CENTER OF GRAVITY: 6.5	"FROM BACK WALL OF ENCLOSURE
VERTICAL CENTER OF GRAVITY: 10.0	"FROM LEFT WALL OF ENCLOSURE

### SECTION WEIGHT:

THE WEIGHTS GIVEN BELOW ARE THE MAXIMUM FOR EACH SECTION AND SHOULD BE USED FOR CALCULATING SEISMIC ANCHORING REQUIREMENTS

MAXIMUM PANEL WEIGHT: 151. LBS / 68.8KGS

JOB NAME: MT VERNON ELEMENTARY	EQUIPMENT DESIGNATION: HD
JOB LOCATION:	EQUIPMENT TYPE: NF (Circuit Breaker Type) PANEL 1 OF 1
DRAWN BY: (Q2C)	DRAWING TYPE: ONE LINE DIAGRAM
ENGR:	 by Schneider Electric
DATE: January 26 2024	
DRAWING STATUS: QUOTE	DWG# OQ-4630945-135509209-S1 PG 1 OF 1 REV -

REV	DESCRIPTION	BY	DATE	---	---	---	---
-	----	--	---/---/---	-	---	---	---

CKT NO	ACCESSORIES	TYPE	RATING AMP/P		RATING AMP/P	TYPE	ACCESSORIES	CKT NO
1								2
3		EDB	35/3			EDB		4
5								6
7								8
9		EDB	35/3			EDB		10
11								12
13							BLANK	14
15		EDB	35/3				BLANK	16
17							BLANK	18
19	BLANK						BLANK	20
21	BLANK						BLANK	22
23	BLANK						BLANK	24
25	BLANK						BLANK	26
27	BLANK						BLANK	28
29	BLANK						BLANK	30
31	BLANK						BLANK	32
33	BLANK						BLANK	34
35	BLANK						BLANK	36
37	BLANK						BLANK	38
39	BLANK						BLANK	40
41	BLANK						BLANK	42

PHYSICAL DATA

ENCLOSURE Type 3R/5/12  
 FRONT CAT#: Trim w/Box  
 BOX CAT#: MH44WP

DIMENSIONS:  
 44"(1118mm)Hx20"(508mm)Wx6.5"(165mm)D

WIRE BENDING SPACE:  
 TOP - 5"(127)mm  
 BOTTOM - 13.25"(337)mm  
 SIDE - 4.1"(105)mm

PBA: 555

BUSSING: 250A RATED ALUMINUM BUS  
 Tin Plated

OPTIONAL FEATURES:  
 SEISMICALLY QUALIFIED : IBC/ASCE7/CBC/NBCC  
 BRANCH USER PLACEMENT  
 ALUMINUM SOLID NEUTRAL  
 ALUMINUM GROUND BAR  
 Maximum Panel Weight 151.  
 Depth Center of Gravity 6.5  
 Elevation Center of Gravity 22.0  
 Vertical Center of Gravity 10.0

ELECTRICAL DATA

SYSTEM: 480Y/277V 3Ph 4W 60Hz  
 System Ampacity: 225A  
 10kA SYMS. SCCR  
 Fully Rated

MAIN: MAIN LUGS : 225A  
 Bottom FEED  
 INCOMING CONDUCTORS(S) PER NEC, CEC, NOM:  
 Wire Bending Space:  
 Phase Lugs:1 - #6 - 350 kcmil

-----BRANCH SUMMATION-----  
 5 - 35A/3P EDB

JOB NAME:	MT VERNON ELEMENTARY	EQUIPMENT DESIGNATION:	HE
JOB LOCATION:		EQUIPMENT TYPE:	NF (Circuit Breaker Type) PANEL 1 OF 1
DRAWN BY:	(Q2C)	DRAWING TYPE:	ONE LINE DIAGRAM
ENGR:			
DATE:	January 26 2024	DWG#	0Q-4630945-135509241-01
DRAWING STATUS:	QUOTE	PG	1 OF 1 REV -

REV	DESCRIPTION	BY	DATE	--	----	---	---/---/---
-	-----	--	---/---/---	-	-----	---	---/---/---

## REQUIREMENTS FOR SEISMIC RATING

SQUARE D PANELBOARDS HAVE BEEN TESTED TO IBC/ASCE7/CBC/NBCC.

THE PANELBOARD TYPES LISTED BELOW MEET THE IBC/ASCE7/CBC/NBCC.

PANELBOARD TYPE	ENCLOSURE TYPE
NQ	TYPE 1, 3R, 5, 12, 4/4X (SS)
NQ COLUMN WIDTH	TYPE 1
NF (STANDARD OR COLUMN WIDTH)	TYPE 1, 3R, 5, 12, 4/4X (SS)
I-LINE	TYPE 1, 3R, 5, 12, 4/4X (SS)
QMB	TYPE 1, 3R, 5, 12, 4/4X (SS)

### GUIDELINES:

- 1) BOLT-ON CIRCUIT BREAKERS ARE REQUIRED ON NQ AND NF PANELBOARDS.
- 2) ENCLOSURES MUST BE SECURED TO THE WALL OR STRUCTURE BY UTILIZING ALL MOUNTING HOLES PROVIDED IN THE ENCLOSURE AND SECURED WITH SAE GRADE 5 STEEL BOLTS SIZED PER THE MOUNTING HOLES.

### ANCHORING CONDITIONS

TO MAINTAIN SEISMIC QUALIFICATIONS, EQUIPMENT MUST BE INSTALLED PER MANUAL (SEE GENERAL NOTES) IN ADDITION TO ANY SEISMIC ANCHORING DETAILS PROVIDED BY OTHERS. DO NOT INSTALL EQUIPMENT BEFORE APPROVED SEISMIC ANCHORING DETAILS HAVE BEEN OBTAINED AND SITE PREPARATIONS HAVE BEEN MADE IN ACCORDANCE WITH THE APPROVED SEISMIC ANCHORING DETAILS. ALL POST-INSTALLED ANCHORS SHALL BE APPROVED FOR SEISMIC LOADS.

### CENTER OF GRAVITY:


THE CG INFORMATION PROVIDED BELOW SHOULD ONLY BE USED FOR SEISMIC ANCHORING CALCULATIONS.

ELEVATION CENTER OF GRAVITY: 22.0	"ABOVE BOTTOM OF ENCLOSURE
DEPTH CENTER OF GRAVITY: 6.5	"FROM BACK WALL OF ENCLOSURE
VERTICAL CENTER OF GRAVITY: 10.0	"FROM LEFT WALL OF ENCLOSURE

### SECTION WEIGHT:

THE WEIGHTS GIVEN BELOW ARE THE MAXIMUM FOR EACH SECTION AND SHOULD BE USED FOR CALCULATING SEISMIC ANCHORING REQUIREMENTS

MAXIMUM PANEL WEIGHT: 151. LBS / 68.8KGS

JOB NAME: MT VERNON ELEMENTARY	EQUIPMENT DESIGNATION: HE
JOB LOCATION:	EQUIPMENT TYPE: NF (Circuit Breaker Type) PANEL 1 OF 1
DRAWN BY: (Q2C)	DRAWING TYPE: ONE LINE DIAGRAM
ENGR:	 <small>by Schneider Electric</small>
DATE: January 26 2024	
DRAWING STATUS: QUOTE	DWG# OQ-4630945-135509241-S1
	PG 1 OF 1
	REV -