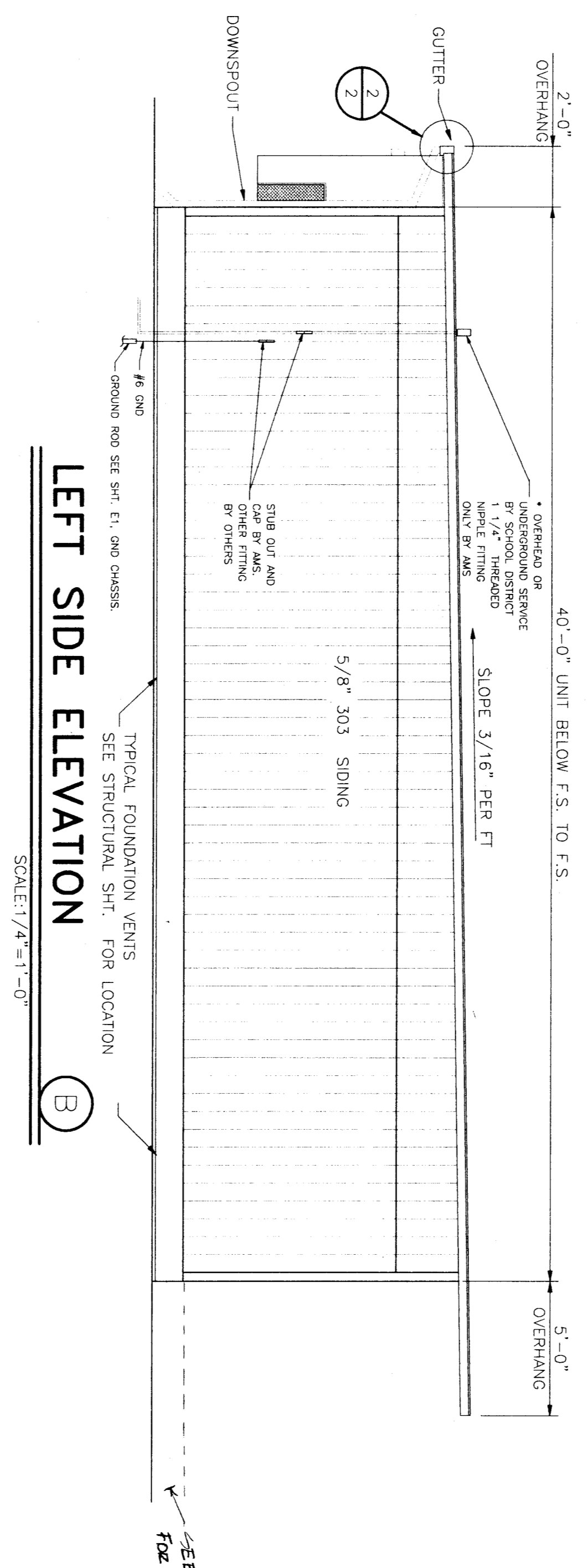
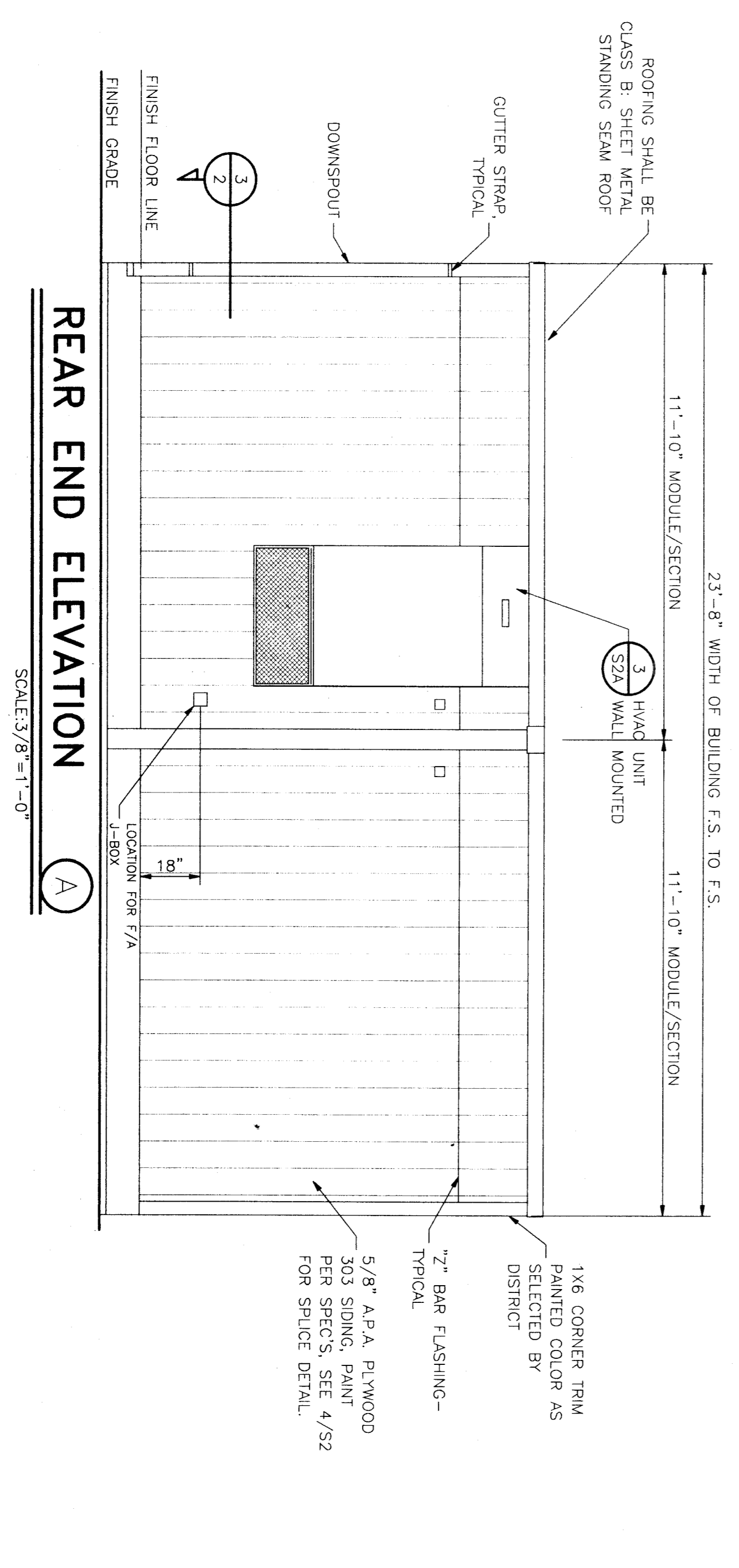


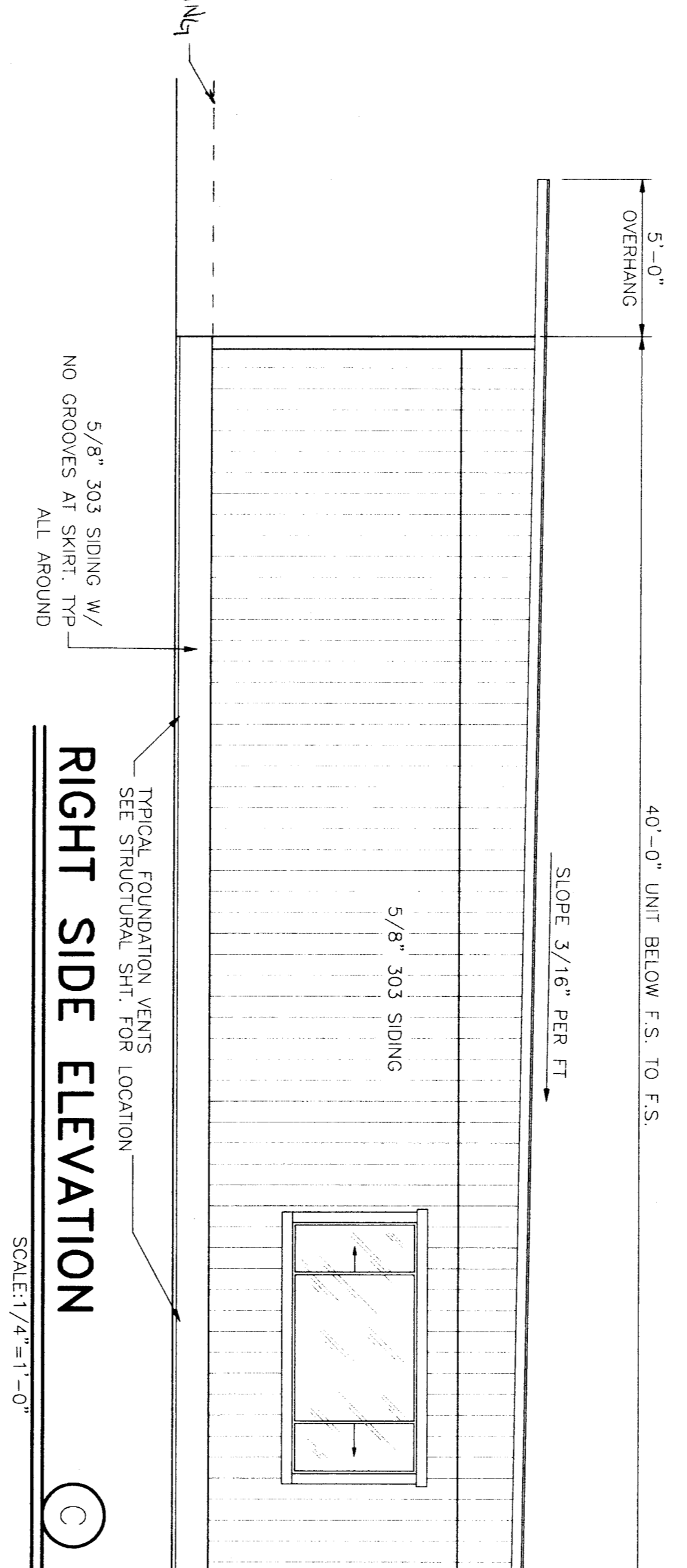
FRONT END/ENTRY ELEVATION
SCALE: 3/8" = 1'-0"



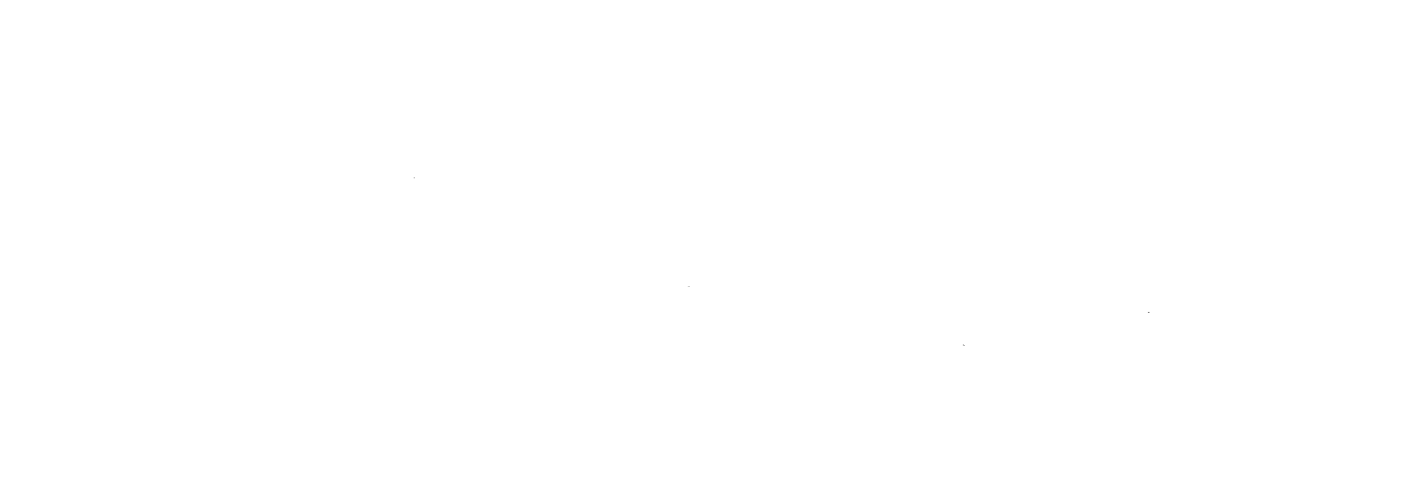
LEFT SIDE ELEVATION
SCALE: 1/4" = 1'-0"



REAR END ELEVATION
SCALE: 3/8" = 1'-0"



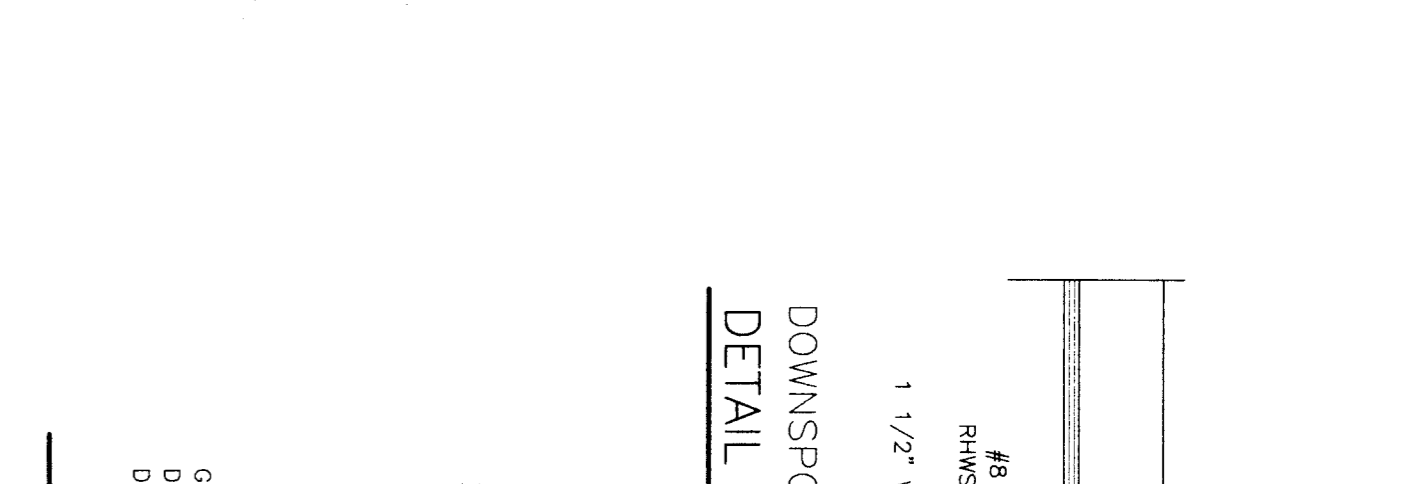
RIGHT SIDE ELEVATION
SCALE: 1/4" = 1'-0"



GUTTER AT OVERHANG DETAIL
SCALE: 1/2" = 1'-0"



DOWNSPOUT DETAIL
SCALE: 1/2" = 1'-0"

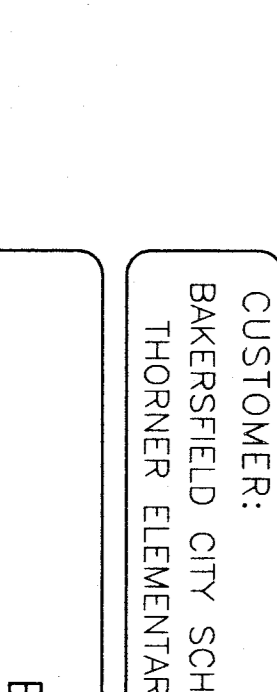


VENT DETAIL
SCALE: 1/2" = 1'-0"

DOOR SIGNAGE
NOT A PART OF THIS CONTRACT (NOT PROVIDED BY A.M.S.)

NOTE:
WHERE PERMANENT IDENTIFICATION IS PROVIDED FOR ROOMS OR SPACES, RAISED LETTERS SHALL BE PROVIDED AND SHALL BE ACCOMPANIED BY BRAILLE IN CONFORMANCE WITH THE FOLLOWING:
1. IDENTIFICATION LETTERS SHALL BE 1/2" HIGH.
2. IDENTIFICATION LETTERS SHALL BE 1/16" SPACED.
3. IDENTIFICATION LETTERS SHALL BE 1/16" SPACED.
4. IDENTIFICATION LETTERS SHALL BE 1/16" SPACED.
5. IDENTIFICATION LETTERS SHALL BE 1/16" SPACED.
6. IDENTIFICATION LETTERS SHALL BE 1/16" SPACED.
7. IDENTIFICATION LETTERS SHALL BE 1/16" SPACED.
8. IDENTIFICATION LETTERS SHALL BE 1/16" SPACED.
9. IDENTIFICATION LETTERS SHALL BE 1/16" SPACED.
10. IDENTIFICATION LETTERS SHALL BE 1/16" SPACED.
11. IDENTIFICATION LETTERS SHALL BE 1/16" SPACED.
12. IDENTIFICATION LETTERS SHALL BE 1/16" SPACED.
13. IDENTIFICATION LETTERS SHALL BE 1/16" SPACED.
14. IDENTIFICATION LETTERS SHALL BE 1/16" SPACED.
15. IDENTIFICATION LETTERS SHALL BE 1/16" SPACED.
16. IDENTIFICATION LETTERS SHALL BE 1/16" SPACED.
17. IDENTIFICATION LETTERS SHALL BE 1/16" SPACED.
18. IDENTIFICATION LETTERS SHALL BE 1/16" SPACED.
19. IDENTIFICATION LETTERS SHALL BE 1/16" SPACED.
20. IDENTIFICATION LETTERS SHALL BE 1/16" SPACED.
21. IDENTIFICATION LETTERS SHALL BE 1/16" SPACED.
22. IDENTIFICATION LETTERS SHALL BE 1/16" SPACED.
23. IDENTIFICATION LETTERS SHALL BE 1/16" SPACED.
24. IDENTIFICATION LETTERS SHALL BE 1/16" SPACED.
25. IDENTIFICATION LETTERS SHALL BE 1/16" SPACED.
26. IDENTIFICATION LETTERS SHALL BE 1/16" SPACED.
27. IDENTIFICATION LETTERS SHALL BE 1/16" SPACED.
28. IDENTIFICATION LETTERS SHALL BE 1/16" SPACED.
29. IDENTIFICATION LETTERS SHALL BE 1/16" SPACED.
30. IDENTIFICATION LETTERS SHALL BE 1/16" SPACED.
31. IDENTIFICATION LETTERS SHALL BE 1/16" SPACED.
32. IDENTIFICATION LETTERS SHALL BE 1/16" SPACED.
33. IDENTIFICATION LETTERS SHALL BE 1/16" SPACED.
34. IDENTIFICATION LETTERS SHALL BE 1/16" SPACED.
35. IDENTIFICATION LETTERS SHALL BE 1/16" SPACED.
36. IDENTIFICATION LETTERS SHALL BE 1/16" SPACED.
37. IDENTIFICATION LETTERS SHALL BE 1/16" SPACED.
38. IDENTIFICATION LETTERS SHALL BE 1/16" SPACED.
39. IDENTIFICATION LETTERS SHALL BE 1/16" SPACED.
40. IDENTIFICATION LETTERS SHALL BE 1/16" SPACED.
41. IDENTIFICATION LETTERS SHALL BE 1/16" SPACED.
42. IDENTIFICATION LETTERS SHALL BE 1/16" SPACED.
43. IDENTIFICATION LETTERS SHALL BE 1/16" SPACED.
44. IDENTIFICATION LETTERS SHALL BE 1/16" SPACED.
45. IDENTIFICATION LETTERS SHALL BE 1/16" SPACED.
46. IDENTIFICATION LETTERS SHALL BE 1/16" SPACED.
47. IDENTIFICATION LETTERS SHALL BE 1/16" SPACED.
48. IDENTIFICATION LETTERS SHALL BE 1/16" SPACED.
49. IDENTIFICATION LETTERS SHALL BE 1/16" SPACED.
50. IDENTIFICATION LETTERS SHALL BE 1/16" SPACED.
51. IDENTIFICATION LETTERS SHALL BE 1/16" SPACED.
52. IDENTIFICATION LETTERS SHALL BE 1/16" SPACED.
53. IDENTIFICATION LETTERS SHALL BE 1/16" SPACED.
54. IDENTIFICATION LETTERS SHALL BE 1/16" SPACED.
55. IDENTIFICATION LETTERS SHALL BE 1/16" SPACED.
56. IDENTIFICATION LETTERS SHALL BE 1/16" SPACED.
57. IDENTIFICATION LETTERS SHALL BE 1/16" SPACED.
58. IDENTIFICATION LETTERS SHALL BE 1/16" SPACED.
59. IDENTIFICATION LETTERS SHALL BE 1/16" SPACED.
60. IDENTIFICATION LETTERS SHALL BE 1/16" SPACED.
61. IDENTIFICATION LETTERS SHALL BE 1/16" SPACED.
62. IDENTIFICATION LETTERS SHALL BE 1/16" SPACED.
63. IDENTIFICATION LETTERS SHALL BE 1/16" SPACED.
64. IDENTIFICATION LETTERS SHALL BE 1/16" SPACED.
65. IDENTIFICATION LETTERS SHALL BE 1/16" SPACED.
66. IDENTIFICATION LETTERS SHALL BE 1/16" SPACED.
67. IDENTIFICATION LETTERS SHALL BE 1/16" SPACED.
68. IDENTIFICATION LETTERS SHALL BE 1/16" SPACED.
69. IDENTIFICATION LETTERS SHALL BE 1/16" SPACED.
70. IDENTIFICATION LETTERS SHALL BE 1/16" SPACED.
71. IDENTIFICATION LETTERS SHALL BE 1/16" SPACED.
72. IDENTIFICATION LETTERS SHALL BE 1/16" SPACED.
73. IDENTIFICATION LETTERS SHALL BE 1/16" SPACED.
74. IDENTIFICATION LETTERS SHALL BE 1/16" SPACED.
75. IDENTIFICATION LETTERS SHALL BE 1/16" SPACED.
76. IDENTIFICATION LETTERS SHALL BE 1/16" SPACED.
77. IDENTIFICATION LETTERS SHALL BE 1/16" SPACED.
78. IDENTIFICATION LETTERS SHALL BE 1/16" SPACED.
79. IDENTIFICATION LETTERS SHALL BE 1/16" SPACED.
80. IDENTIFICATION LETTERS SHALL BE 1/16" SPACED.

24 X 40
RELOCATABLE
CLASSROOMS



333 EAST CARNEGIE CT. MANTeca, CALIFORNIA 95337
PHONE (209) 825-1921 FAX (209) 825-7018

CUSTOMER:
BAKERSFIELD CITY SCHOOL DISTRICT
THORNER ELEMENTARY SCHOOL

EXTERIOR ELEVATIONS

NO.	DATE	DESCRIPTION	NO.	DATE	DESCRIPTION

PROJECT NO.
SHEET No. 2

FILE NO.
105313
DATE

PROJ. IDENTIFICATION STAMP
DATE OF REVISION

AC BY FLS SS BAK