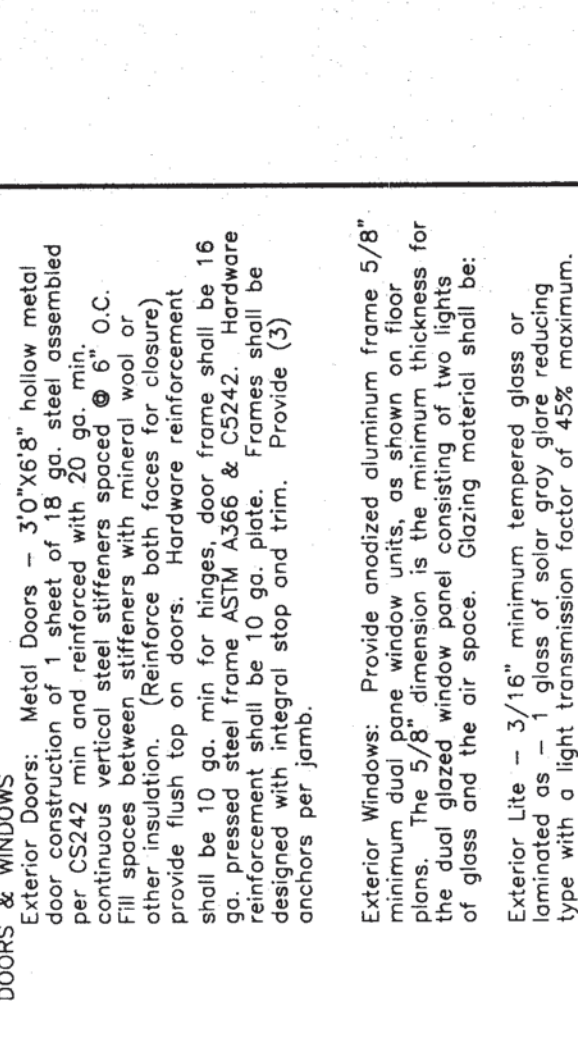


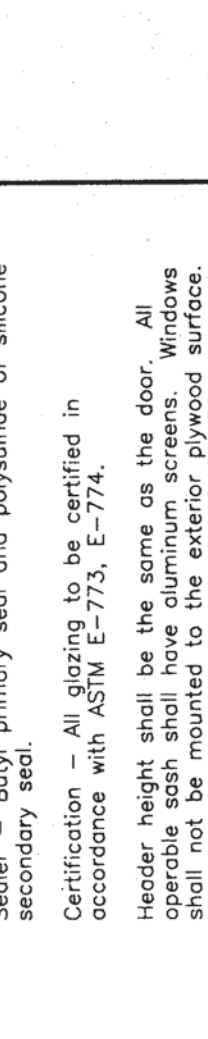
NOTES
 INTERIOR
 1. Floor: NO CARPET
 2. Base: Regilent Cove Base - Best quality, moulded
 Cove: Provide performed base for square external
 corners and perimeter and stops where base does not
 meet. Apply to all base. Base shall be installed in
 accordance with manufacturer's instructions. Base
 Co., Flexco, or equal. Apply cove to complete
 perimeter of base. **NOTE: SEE SHEET NO. 4 FOR
 LANDING.**
 3. Interior walls shall be vinyl covered backboard U.N.O.
 applied in one continuous length from floor to ceiling.
 The vinyl shall be applied to the wall and ceiling
 covered wall panels. The board shall be asphalt free,
 minimum density of 18 lbs. per sq. ft. The vinyl coating
 shall be made of virgin vinyl calendared base color,
 with a minimum thickness of 0.015 inches. The vinyl
 coating backing shall be sheeting or non-woven fabric.
 The vinyl coating shall be mechanically laminated, with
 sheathing. The vinyl wall covered panel shall have a
 minimum thickness of 1/2" sheetrock or 3/8" plywood
 sheathing. The vinyl wall covered panel shall be
 approved for classroom use by The California State Fire
 Marshal. Reference brand: Vinyl covered backboard as
 manufactured by or comparable. Core shall be taken in
 mounting the backboard so that the texture of all
 panels will have the same orientation and color match.
 4. Ceiling: Suspend T-Bar System, see sheet 3 for details
 etc. Materials and installation per CR 2501.43 and
 CR #47-4 include as applicable to classrooms.

DOORS & WINDOWS
 Exterior Doors - 3'0" x 6'8" hollow metal
 door construction of 16 gauge steel with 30 mil
 continuous vertical steel stiffeners spaced @ 8" O.C.
 Fill spaces between stiffeners with mineral wool or
 provide flush top on doors. Hardware reinforcement
 shall be 10 ga. min for hinges, door frame shall be 16
 gauge. Door reinforcement shall be 10 ga. plate. Frames shall be
 designed with integral stop and trim. Provide (3)
 anchors per jamb.
 Exterior Windows: Provide specified aluminum frame 5/8"
 minimum dual pane window units, as shown on floor
 plans. The 5/8" dimension is the minimum thickness for
 glass and the air space. Glazing material shall be:
 Exterior Lite - 3/16" minimum tempered glass or
 laminated as - 1 glass of solar gray glass reducing
 type with a light transmission factor of 45% maximum.
 Interior Lite - 1/8" minimum clear tempered.
 Minimum air space shall be 1/4".
 Space - Bent or sealed corner aluminum with desiccant
 fill.
 Sealer - Butyl primary seal and polysulfide of silicone
 secondary seal.
 Certification - All glazing to be certified in
 accordance with ASTM E-773, E-774.
 Header height shall be the same as the door. All
 operable sash shall have aluminum screens. Windows
 shall be installed in accordance with manufacturer's
 spec. For aluminum prime windows and sliding glass
 (ANSI), commercial grade.
 HARDWARE
 1. Exterior Door
 A) Hinges: HAGER 4-1/2x4-1/2 bolts, set
 screw in barrel and ball bearing design, or approved
 equal.
 B) Lockset: Classroom lever handle, lockset, mortise or
 cylindrical type, Schlage D70PD (Rhodes) or equal,
 US26D finish.
 C) Closer: Norton 8500DA or 8500BF series, LCN 1460
 Del series or equal. All exterior doors shall be
 weatherstripped with Fernco 299D, Ultra WS007, at door
 jams and head or equal.
 D) Doorstop: Perko 216 AV Ultra TH042 door bottom,
 aluminum with Perko 216 AV Ultra TH042 door bottom.
 E) Doorstop: Quality #44, or equal.
 F) Doorstop: Quality #44, or equal.

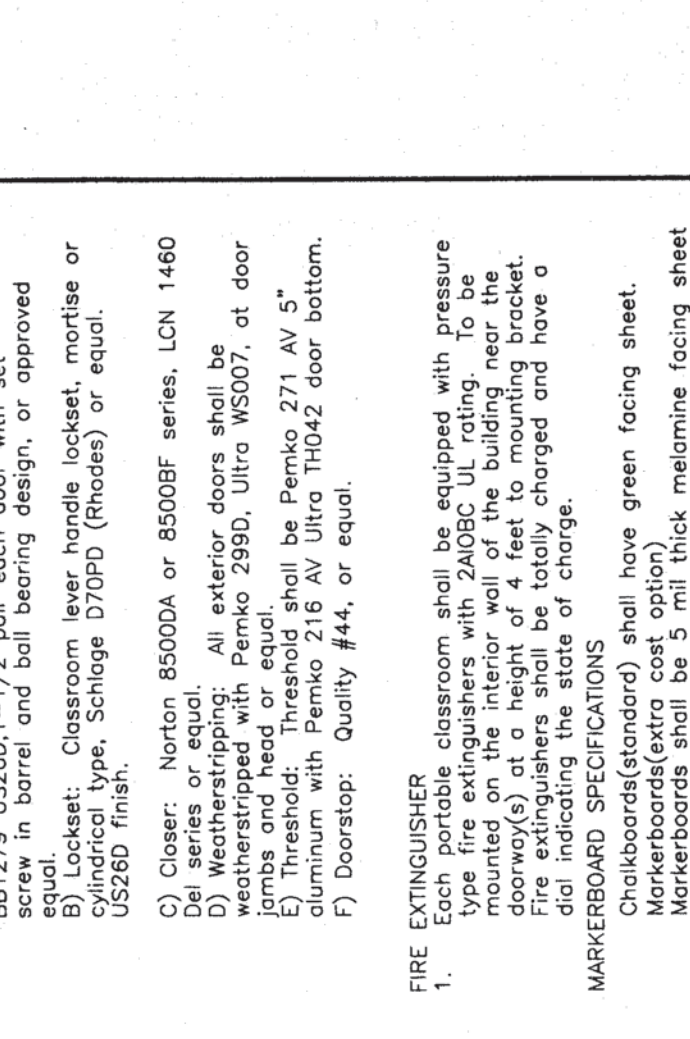
FIRE EXTINGUISHER
 1. Each portable classroom shall be equipped with pressure
 rated fire extinguisher. The extinguisher shall be
 mounted on the interior wall of the building near the
 doorway(s) at a height of 4 feet to mounting bracket,
 with a clear path to the extinguisher. The mounting
 shall indicate the state of charge.
 MARKERBOARD SPECIFICATIONS
 Markerboards(standard) shall have green facing sheet.
 Markerboards(extra cast, optional) machine facing sheet
 suitable to accept dry erase felt markers. The facing
 sheet shall be laminated, using hot melt adhesive, to a
 minimum thickness of 1/2". The markerboard shall have a
 density of 45 lbs./c. ft. The panel shall have a full
 backing. The panels shall have extruded aluminum
 framing. The panels shall be mechanically laminated
 projection from the face of the panel. A full length
 map rail shall be provided with cork insert and end
 caps. The cork insert shall be 1/2" thick and shall
 incorporate a channel to wrap around the panel. Three
 (3) map hooks, with clips, per panel shall be
 provided for each classroom. Each classroom shall
 be 2 sq. 48 panels installed side by side to make
 up the wall area. The panels shall be installed in
 accordance with manufacturer's instructions.
 Referenced brand: Chadfield-Crooke Co. series 500,
 Attach directly to studs and blocking w/ #8x3" oval head
 verticals @ 32" o.c. horizontally and @ 24" o.c.



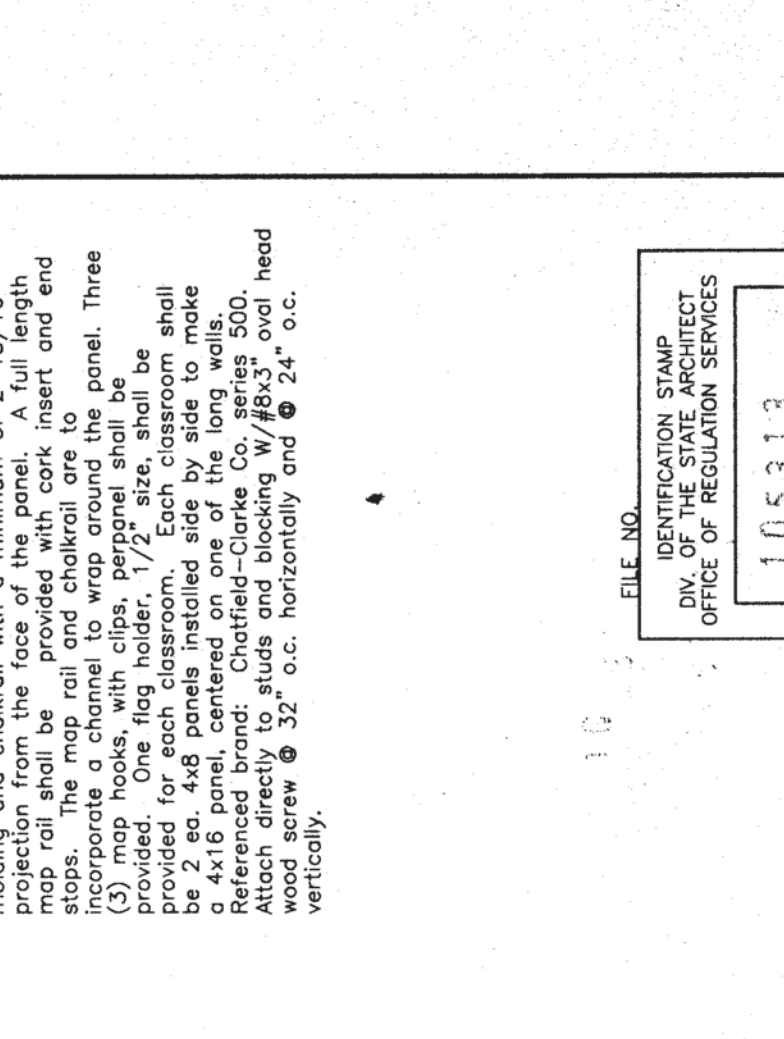
(4) LEFT HAND DOOR-FLOOR PLAN
 SCALE: 1/8"=1'-0"



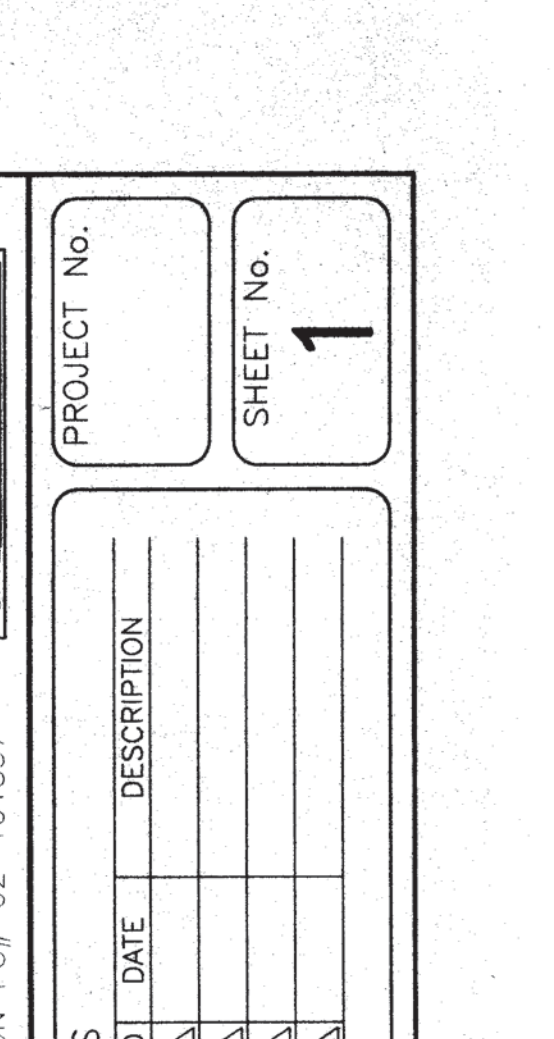
(4) RIGHT HAND DOOR-FLOOR PLAN
 SCALE: 1/4"=1'-0"



TYPICAL EXTERIOR DOOR JAMB
 NO SCALE 5 1

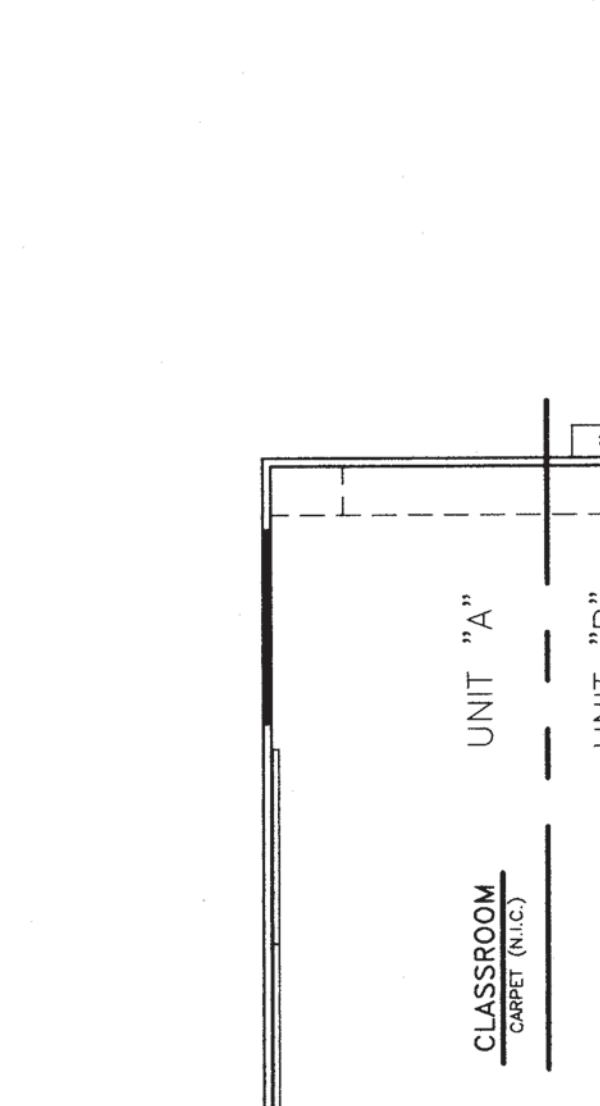


TYPICAL EXTERIOR DOOR HEAD
 NO SCALE 6 1

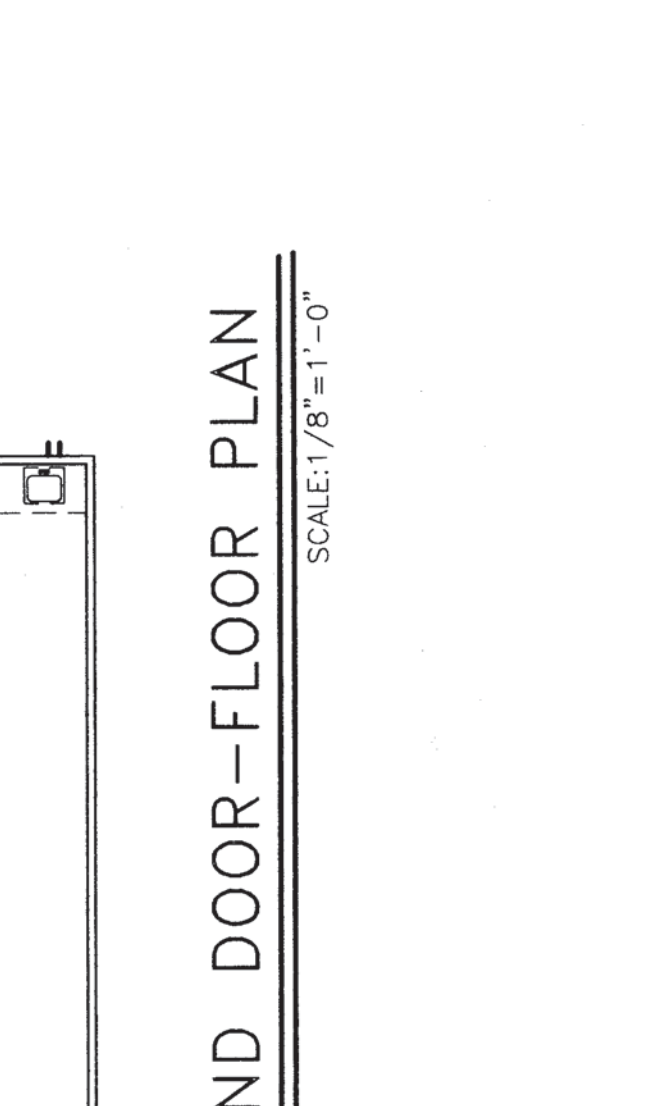


TYPICAL EXTERIOR DOOR SILL
 NO SCALE 4 1

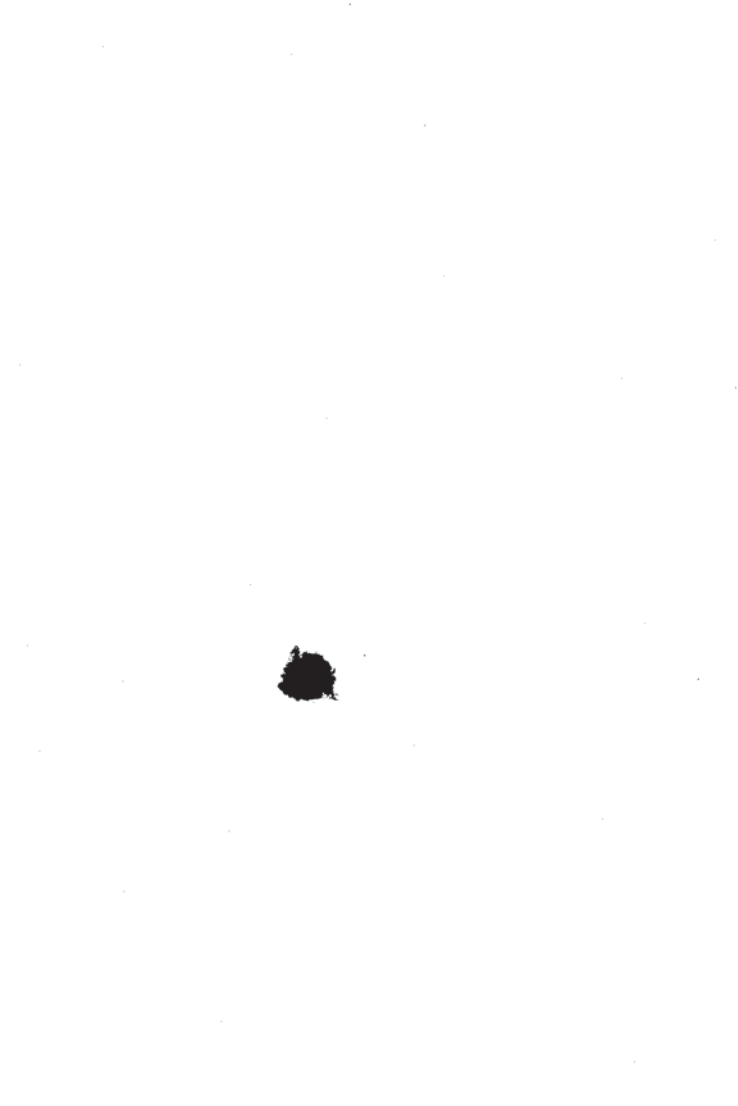
TYPICAL EXTERIOR WINDOW INSTALLATION NOTE:
 SEE MANUF. SPECS FOR INSTALLATION
 USE .131" X 2 1/2" @ 16" O.C. VERTICALS
 USE .131" X 2 1/2" @ 24" O.C. HORIZONTALS



TYPICAL EXTERIOR WINDOW JAMB
 NO SCALE 2 1



TYPICAL EXTERIOR WINDOW SILL DETAIL
 NO SCALE 1 1



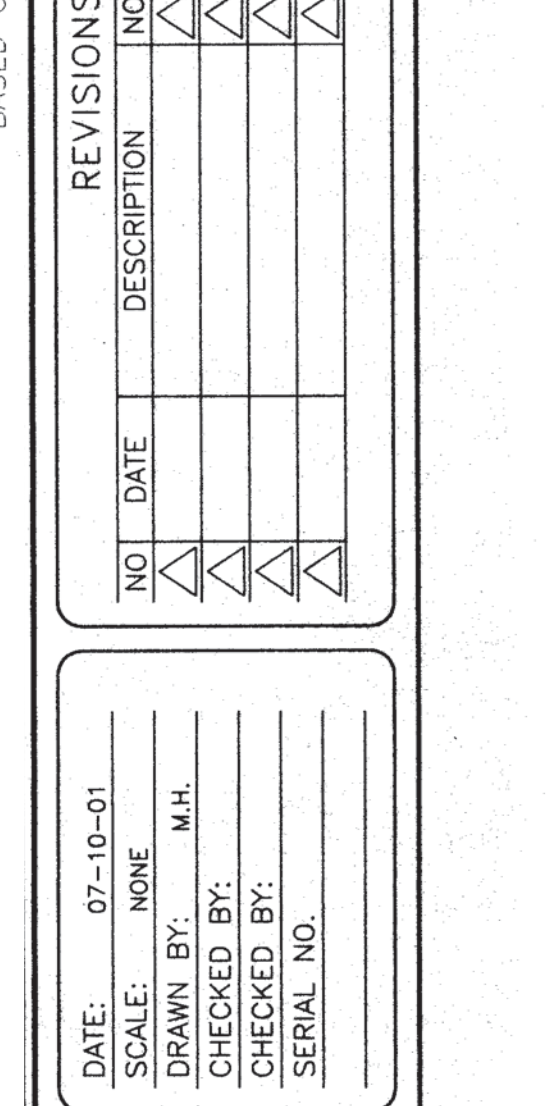
TYPICAL EXTERIOR WINDOW HEAD
 NO SCALE 3 1



TYPICAL EXTERIOR WINDOW SILL
 NO SCALE 1 1



TYPICAL EXTERIOR DOOR SILL
 NO SCALE 4 1



TYPICAL EXTERIOR DOOR HEAD
 NO SCALE 6 1

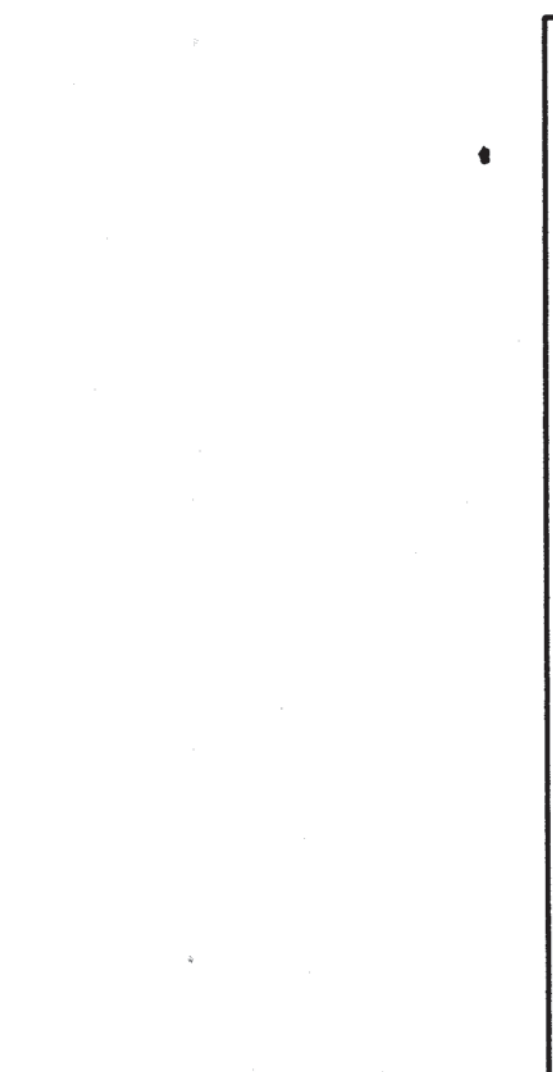
CLASSROOM
 CARPET (N.I.C.)
 UNIT "A"
 UNIT "B"
 CABINETS (N.I.C.)
 WALL MOUNTED HVAC UNIT.
 WITHOUT T-STAT
 LOCATION FOR F/A 2 GANG
 J-BOX @ 18" ABOVE FIN.
 1-1/2" WASTE
 1/2" WATER
 8040 WINDOW
 (2) 8'x4' MARKER BOARDS
 FIRE EXTINGUISHER LOCATION
 +48" F.F. TO BRACKET
 MOODNIM
 8040
 11'-10"
 11'-10"
 23'-8" F.S. TO F.S.
 23'-11" OVERALL F.O. TRIM TO F.O. TRIM
 2'-0" ROOF OVERHANG
 5'-0" ROOF OVERHANG
 40'-0" BUILDING F.S. TO F.S.
 47'-0" ± TOTAL ROOF LENGTH
 3'-0"
 REAR
 FRONT
 MODULE LINE

(4) LEFT HAND DOOR-FLOOR PLAN
 SCALE: 1/8"=1'-0"

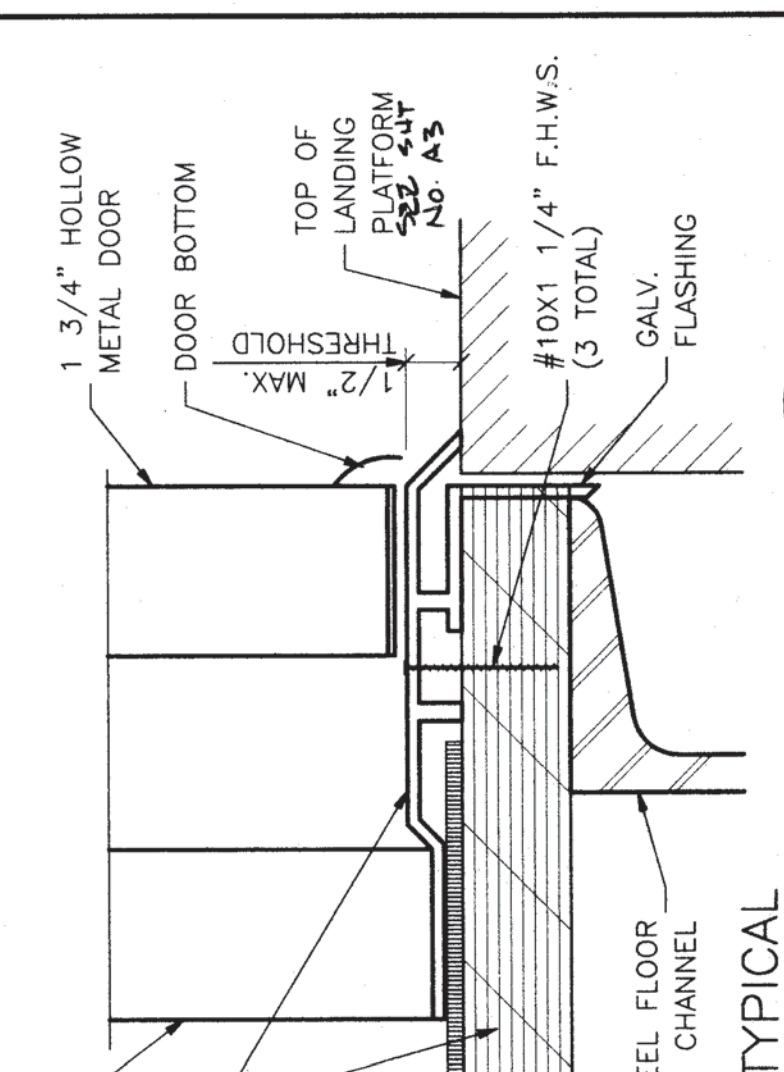
(4) RIGHT HAND DOOR-FLOOR PLAN
 SCALE: 1/4"=1'-0"



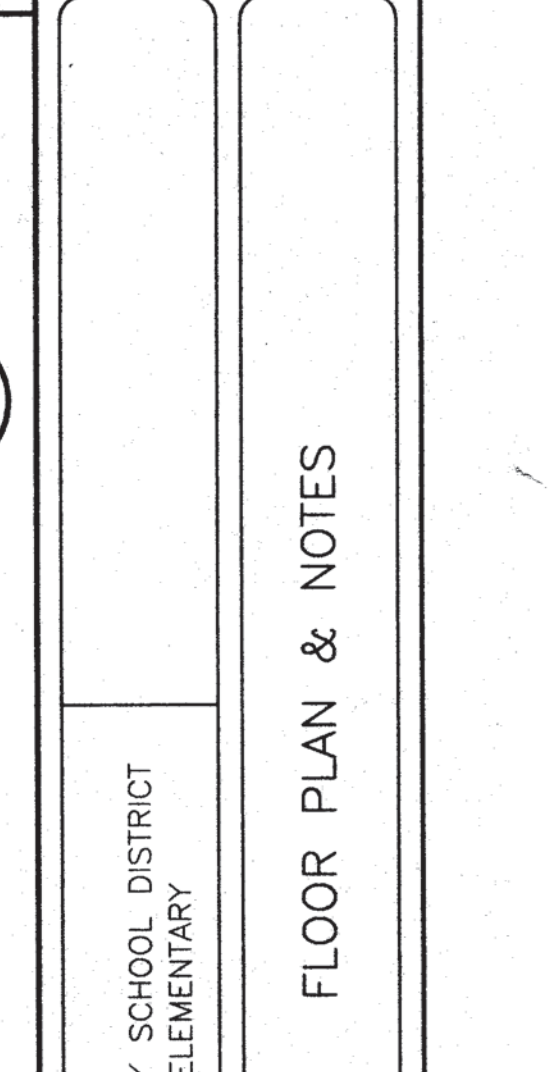
TYPICAL EXTERIOR WINDOW JAMB
 NO SCALE 2 1



TYPICAL EXTERIOR WINDOW HEAD
 NO SCALE 3 1



TYPICAL EXTERIOR DOOR SILL
 NO SCALE 4 1

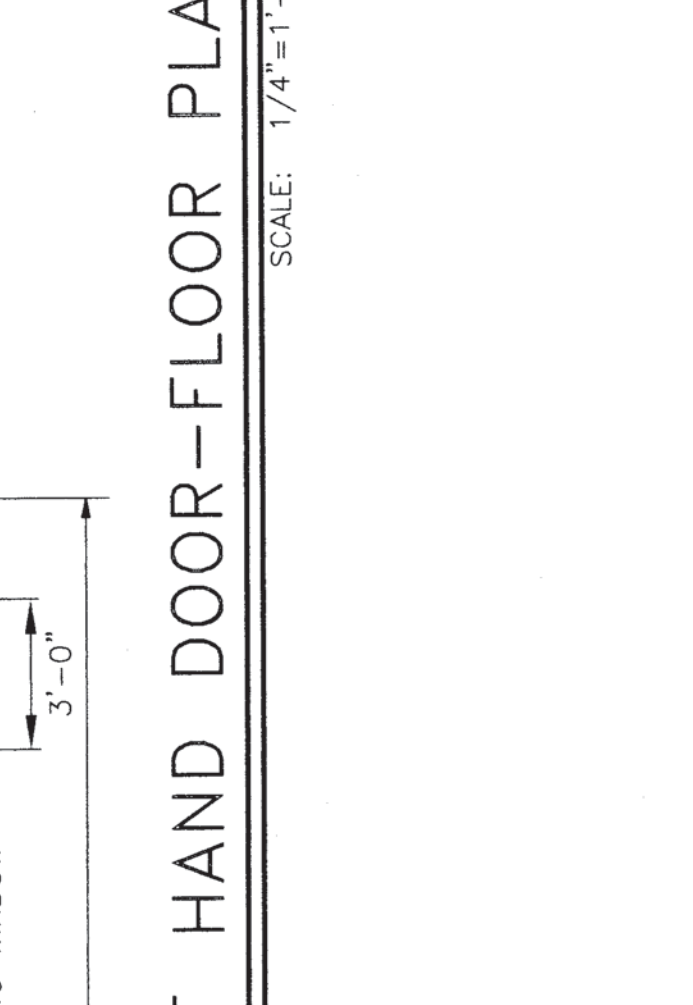


TYPICAL EXTERIOR DOOR HEAD
 NO SCALE 6 1

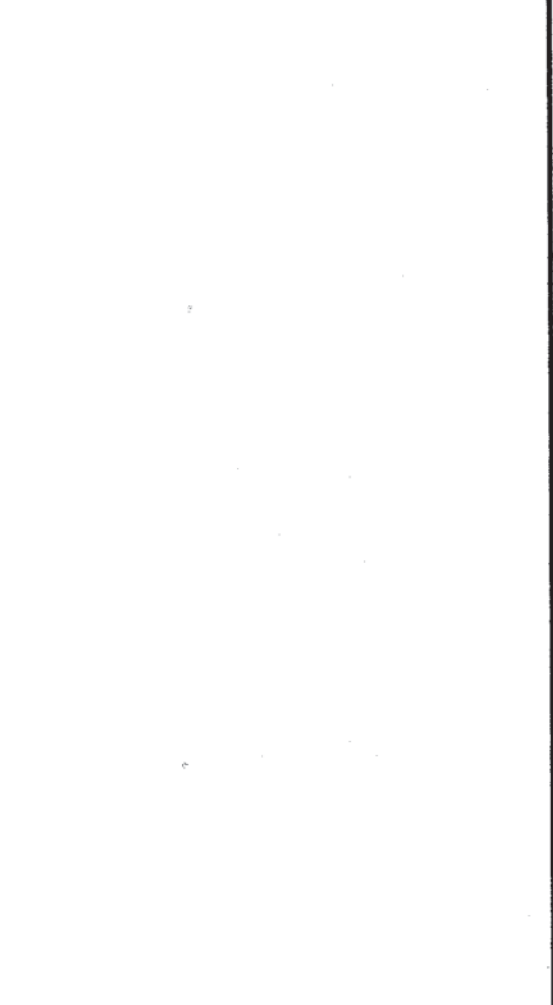
CLASSROOM
 CARPET (N.I.C.)
 UNIT "A"
 UNIT "B"
 CABINETS (N.I.C.)
 WALL MOUNTED HVAC UNIT.
 WITHOUT T-STAT
 LOCATION FOR F/A 2 GANG
 J-BOX @ 18" ABOVE FIN.
 1-1/2" WASTE
 1/2" WATER
 8040 WINDOW
 (2) 8'x4' MARKER BOARDS
 FIRE EXTINGUISHER LOCATION
 +48" F.F. TO BRACKET
 MOODNIM
 8040
 11'-10"
 11'-10"
 23'-8" F.S. TO F.S.
 23'-11" OVERALL F.O. TRIM TO F.O. TRIM
 2'-0" ROOF OVERHANG
 5'-0" ROOF OVERHANG
 40'-0" BUILDING F.S. TO F.S.
 47'-0" ± TOTAL ROOF LENGTH
 3'-0"
 REAR
 FRONT
 MODULE LINE

(4) LEFT HAND DOOR-FLOOR PLAN
 SCALE: 1/8"=1'-0"

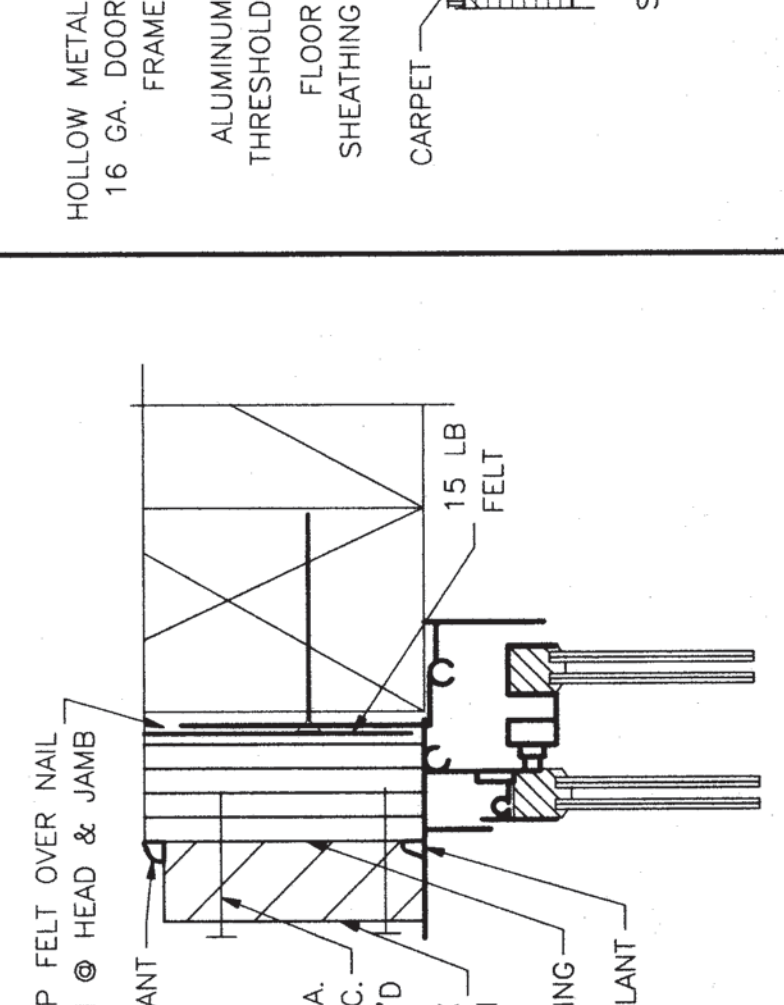
(4) RIGHT HAND DOOR-FLOOR PLAN
 SCALE: 1/4"=1'-0"



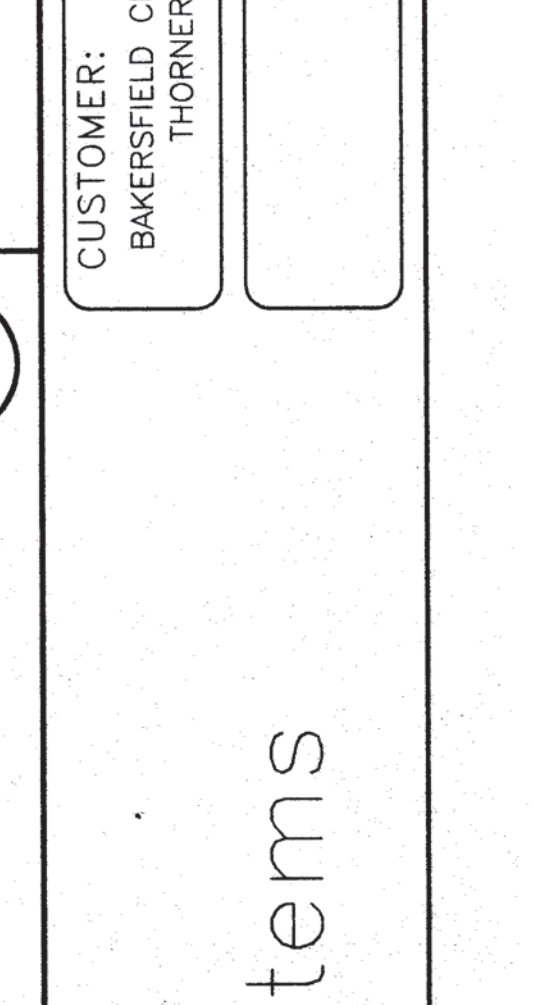
TYPICAL EXTERIOR WINDOW JAMB
 NO SCALE 2 1



TYPICAL EXTERIOR WINDOW HEAD
 NO SCALE 3 1



TYPICAL EXTERIOR DOOR SILL
 NO SCALE 4 1

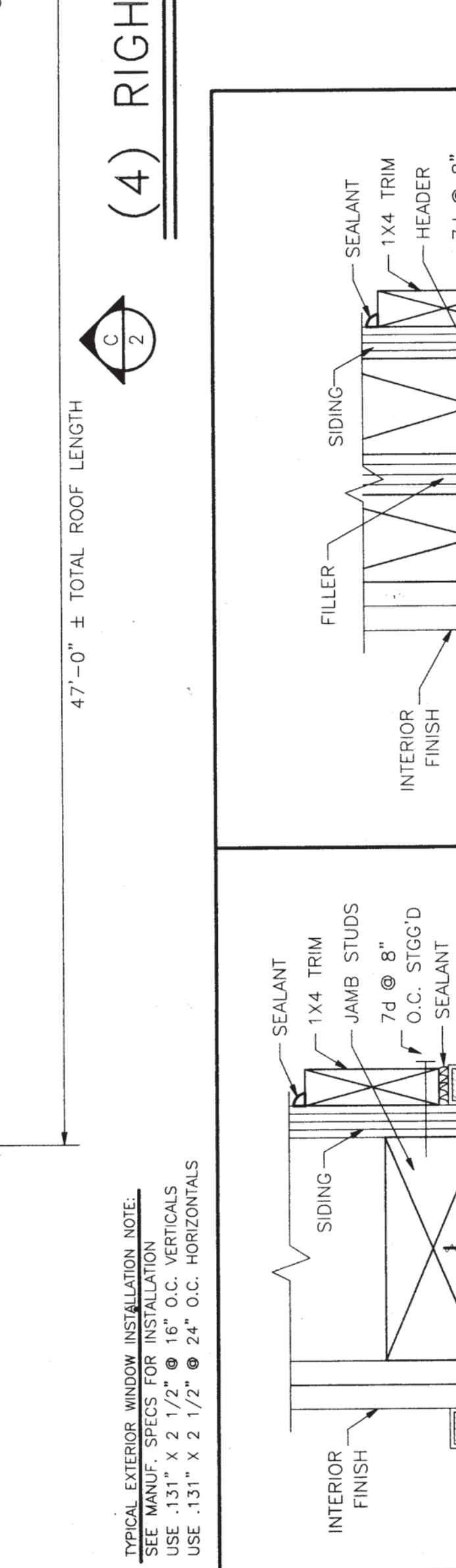


TYPICAL EXTERIOR DOOR HEAD
 NO SCALE 6 1

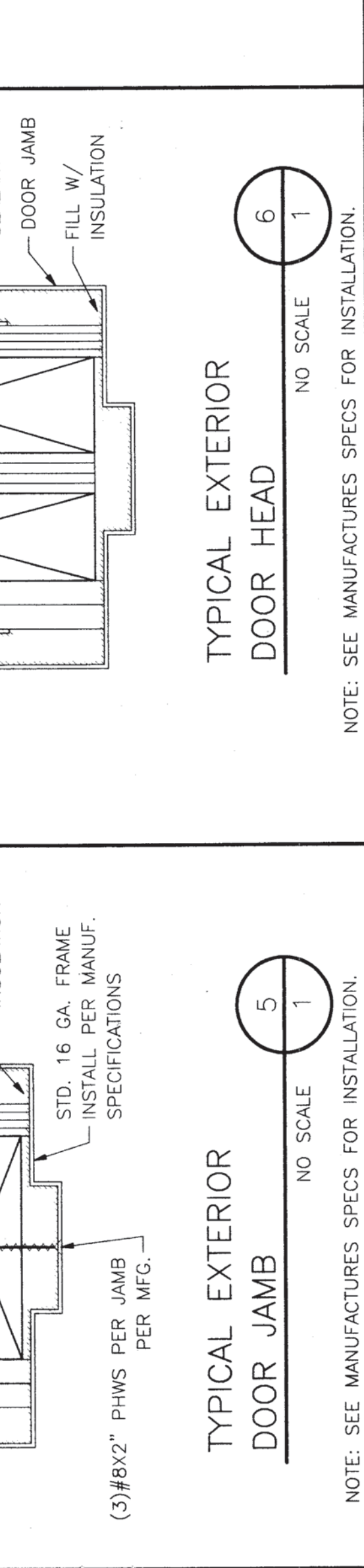
CLASSROOM
 CARPET (N.I.C.)
 UNIT "A"
 UNIT "B"
 CABINETS (N.I.C.)
 WALL MOUNTED HVAC UNIT.
 WITHOUT T-STAT
 LOCATION FOR F/A 2 GANG
 J-BOX @ 18" ABOVE FIN.
 1-1/2" WASTE
 1/2" WATER
 8040 WINDOW
 (2) 8'x4' MARKER BOARDS
 FIRE EXTINGUISHER LOCATION
 +48" F.F. TO BRACKET
 MOODNIM
 8040
 11'-10"
 11'-10"
 23'-8" F.S. TO F.S.
 23'-11" OVERALL F.O. TRIM TO F.O. TRIM
 2'-0" ROOF OVERHANG
 5'-0" ROOF OVERHANG
 40'-0" BUILDING F.S. TO F.S.
 47'-0" ± TOTAL ROOF LENGTH
 3'-0"
 REAR
 FRONT
 MODULE LINE

(4) LEFT HAND DOOR-FLOOR PLAN
 SCALE: 1/8"=1'-0"

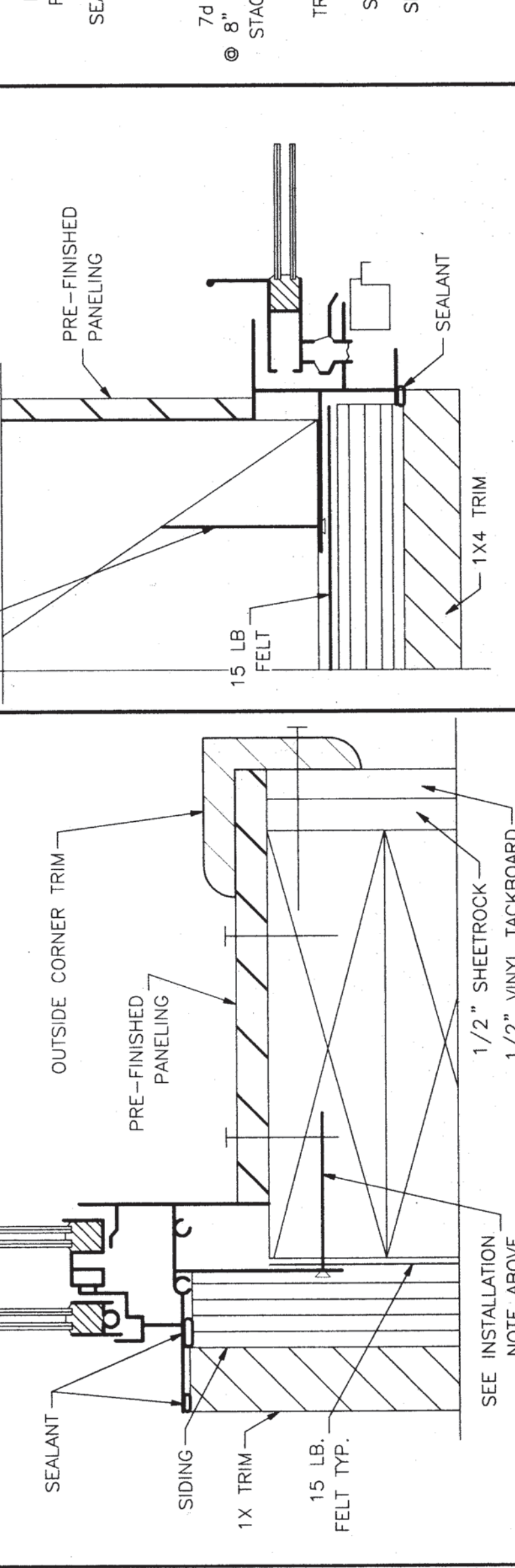
(4) RIGHT HAND DOOR-FLOOR PLAN
 SCALE: 1/4"=1'-0"



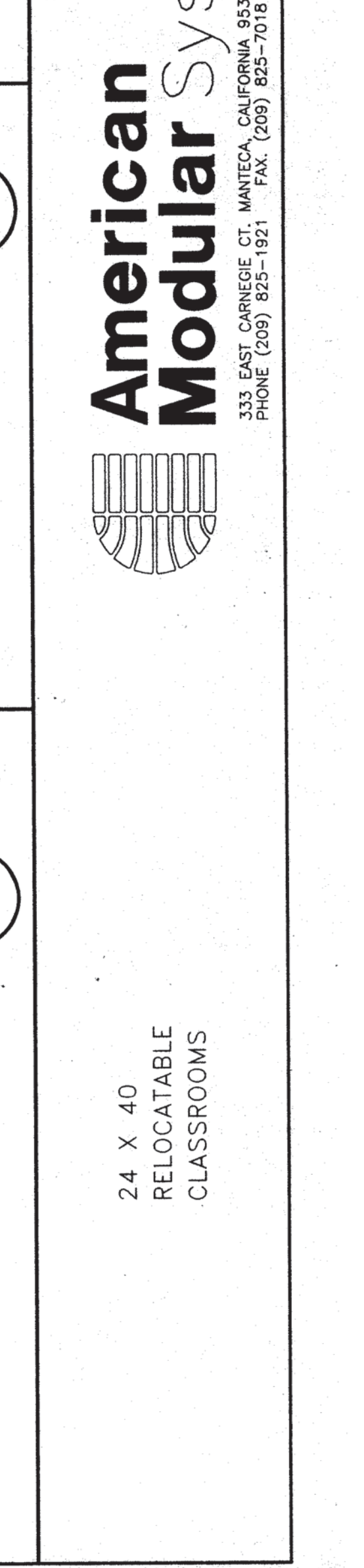
TYPICAL EXTERIOR WINDOW JAMB
 NO SCALE 2 1



TYPICAL EXTERIOR WINDOW HEAD
 NO SCALE 3 1



TYPICAL EXTERIOR DOOR SILL
 NO SCALE 4 1



TYPICAL EXTERIOR DOOR HEAD
 NO SCALE 6 1

DATE: 07-10-01
 SCALE: NONE
 DRAWN BY: M.H.
 CHECKED BY:
 SERIAL NO.:

REVISIONS
 NO. DATE DESCRIPTION

PROJECT NO.
 SHEET NO. 1

24 X 40
 RELOCATABLE
 CLASSROOMS

American Modular Systems
 333 EAST CARLSBEE CT. MANTECA, CALIFORNIA 95337
 PHONE (209) 852-921 FAX (209) 825-7018

CUSTOMER:
 BAKERSFIELD CITY SCHOOL DISTRICT
 THORNER ELEMENTARY

FLOOR PLAN & NOTES

BASED ON PC# 02-101837