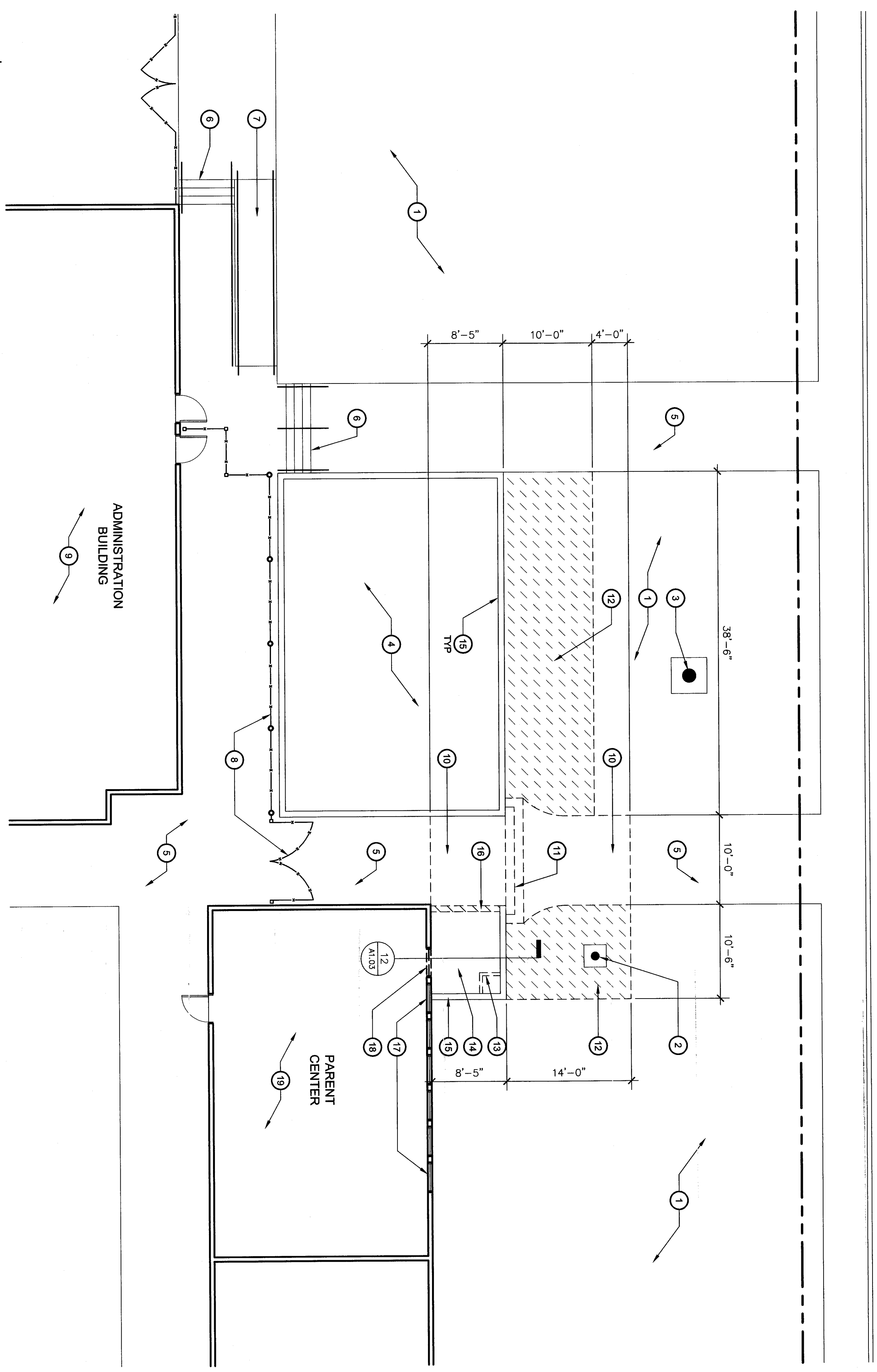
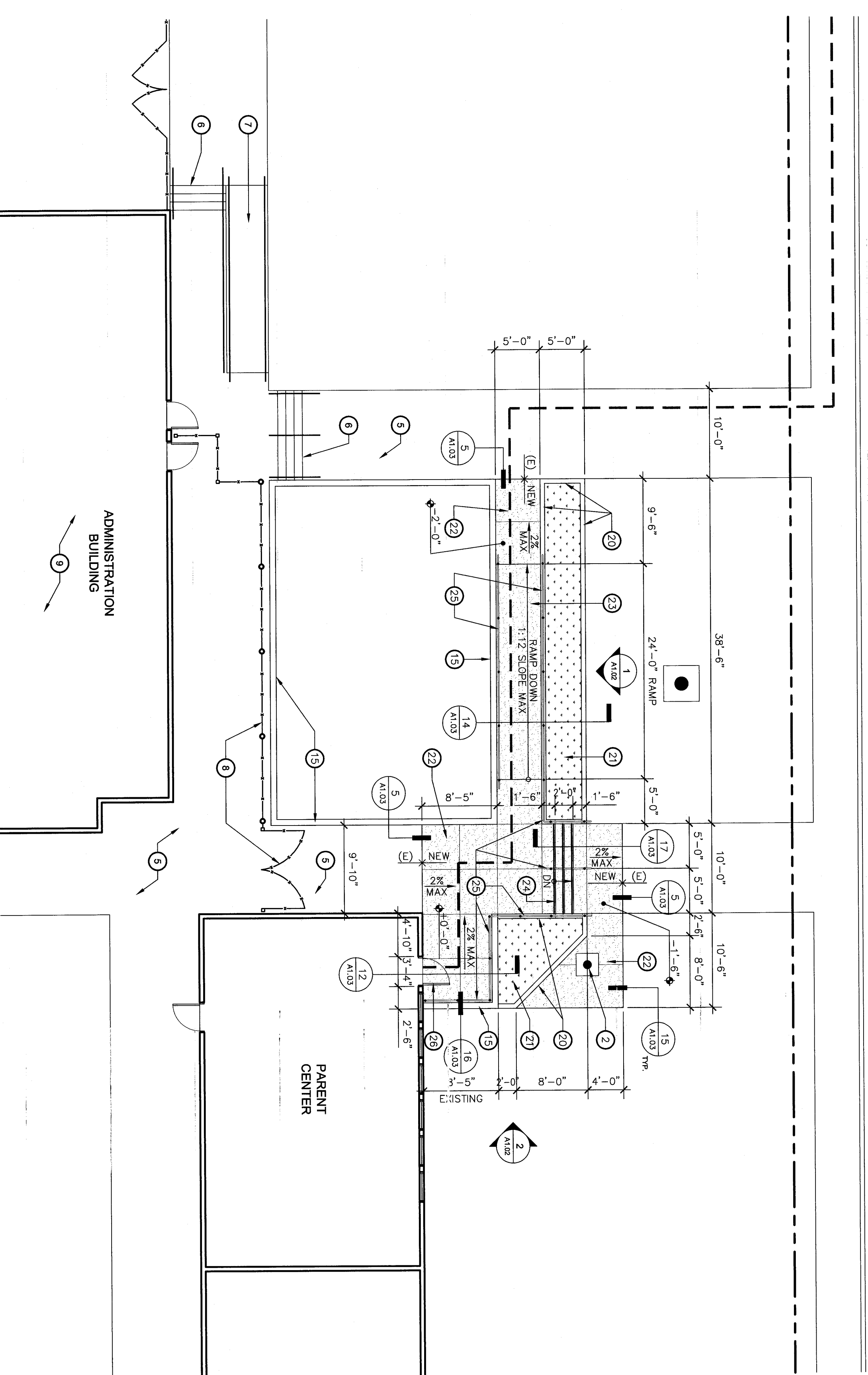


DEMOLITION SITE PLAN
MT. VERNON ELEMENTARY SCHOOL



SCALE: 1/8" = 1'-0"

ENLARGED SITE PLAN
MT. VERNON ELEMENTARY SCHOOL



SCALE: 1/8" = 1'-0"

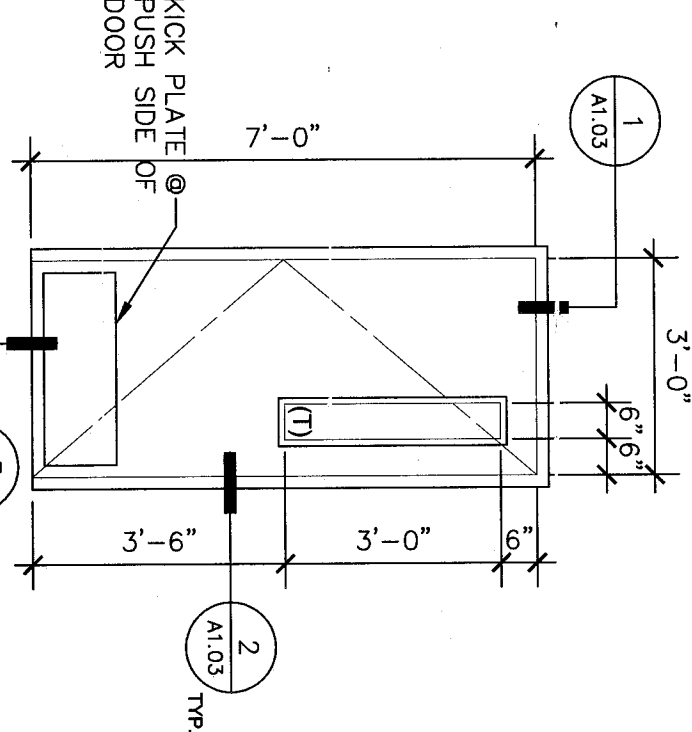
KEY NOTES

1. (E) TYPED TO REMAIN.
2. (E) FLAG HOLE TO REMAIN
3. (E) MARQUEE SIGN TO REMAIN
4. (E) RASSED PLANTER TO REMAIN
5. (E) CONCRETE SIDEWALK TO REMAIN
6. (E) CONCRETE STEPS & HANDRAILS TO REMAIN
7. (E) CONCRETE RAMP & HANDRAILS TO REMAIN
8. (E) FORMALMENTAL IRON FENCE & GATE TO REMAIN
9. (E) ADMINISTRATION BUILDING TO REMAIN, NO WORK
10. REMOVE PORTION OF (E) CONCRETE SIDEWALK
11. REMOVE (E) CONCRETE STEPS
12. REMOVE PORTION OF (E) TYPED AREA, PREP FOR NEW WORK, ADJUST IRRIGATION AS NECESSARY FOR A COMPLETE WORKING SYSTEM
13. (E) CONCRETE LIGHT BOX IN PLANTER, REMOVE PORTIONS OF CONCRETE STEEL WALLS AS REED FOR NEW SIDEWALK.
14. (E) PLANTER, REMOVE ALL LANDSCAPING
15. (E) CONCRETE PLANTER WALL TO REMAIN
16. REMOVE PORTION OF (E) CONCRETE PLANTER WALL
17. (E) WINDOWS TO REMAIN
18. REMOVE EXISTING/NEW/CONCRETE WALL REMAINING BELOW WINDOW AND CONCRETE CURB AS REED FOR NEW DOOR OPENING
19. (E) PARENT CENTER TO REMAIN, PATCH & REPAIR INTERIOR FINISHES AT NEW DOOR
20. 4" HIGH CONCRETE CURB, TYPICAL
21. NEW LANDSCAPE PLANTER, PROVIDE IRRIGATION SYSTEM
22. NEW #4 THICK CONCRETE SIDEWALK, 2% MAX SLOPE BOTH DIRECTIONS PER DETAIL 19A1.03
23. NEW CONCRETE RAMP W/ HANDRAILS @ EACH SIDE PER DETAIL 14A.03
24. NEW CONCRETE STEPS W/ (3) HANDRAILS PER DETAIL 17A1.03
25. 3/4" HIGH, 1-1/2" STIP PIPE (1" O.D.) GALVANIZED HANDRAILS, TYPICAL
26. NEW HW DOOR, SEE DOOR SCHEDULE THIS SHEET

GENERAL NOTES

1. GENERAL CONTRACTOR SHALL FIELD VERIFY ALL DISCREPANCIES ARE FOUND, THE ARCHITECT SHALL BE NOTIFIED IN WRITING.
2. CONTRACTOR SHALL BE RESPONSIBLE FOR THE CORRECTNESS OF LAYOUTS AND ESTABLISHED CONDITIONS ON LOCATION SHALL BE THE ARCHITECT'S RESPONSIBILITY OF THE GENERAL CONTRACTOR CONTRACT APPLICABLE GOVERNING AGENCY/CONTRACTOR'S RESPONSIBILITY AND COORDINATION OF WORK.
3. GENERAL CONTRACTOR WILL BE RESPONSIBLE FOR ANY COMMUNICATION RETEST DUE TO INITIAL FAILURE, PROJECT INSPECTION SHALL BE EARLIED BY THE ARCHITECT AND DSA.
4. A COPY OF TITLE 24, ALL PARTS APPLICABLE, TO BE KEPT AT THE JOB SITE AT ALL TIMES.
5. ADDENDA SHALL BE SIGNED BY THE ARCHITECT (RESPONSIBLE IN CHARGE) AND APPROVED BY DSA.
6. CONSTRUCTION CHANGE DOCUMENTS SHALL BE SIGNED BY THE ARCHITECT (RESPONSIBLE IN CHARGE), OWNER, AND APPROVED BY DSA.
7. TESTING LAB SHALL BE EMPLOYED BY THE OWNER, APPROVED BY THE RESPONSIBLE ARCHITECT AND DSA.
8. ALL WORK SURFACES DISTURBED OR DAMAGED BY THE DEMOLITION WORK SHALL BE REPAIRED IN KIND, AND REPAIRS SHALL BE FINISHED TO MATCH EXISTING SURFACES.
9. RE ROUTE EXISTING IRRIGATION SPRINKLER LINES AND DEVICES AS REQUIRED FOR PROPER COVERAGE IN THE AREA OF NEW CONSTRUCTION.
10. NEW CONCRETE WALKS SHALL HAVE SLOPES OF NOT TO EXCEED 1 IN 20 IN THE DIRECTION OF PATH OF TRAVEL & CROSS SLOPE OF 2% MAX.
11. PROVIDE CONTROL JOINTS (C/J) AT 5'-0" O.C. MAX. AND EXPANSION JOINTS NOT TO EXCEED 30'-0" MAX. PER DETAIL 10A1.03. FINISH SHALL MATCH EXISTING DETAIL 10A1.03.
12. THE CONTRACTOR IS RESPONSIBLE FOR PROTECTING EXISTING ADJACENT FACILITIES FROM DAMAGE INCLUDING BUT NOT LIMITED TO EXISTING UTILITIES, STREETS, ETC.
13. THE CONTRACTOR SHALL BE RESPONSIBLE FOR THE PROTECTION OF ALL ADJACENT FACILITIES FROM DAMAGE INCLUDING BUT NOT LIMITED TO EXISTING UTILITIES, STREETS, ETC.

DOOR SCHEDULE



NEW DOOR & FRAME:
 3/4" x 7/8" x 1/2" S&W THICK HOLLOW METAL DOOR & SAFETY GLAZING PER CBC 24B1.11 COORDINATE WITH OWNER FOR DOOR HARDWARE RECOMMENDATIONS

LEGEND

- INDICATES NEW CONCRETE FLATWORK.
- SEE 19A1.03
- INDICATES NEW LANDSCAPE AREA & IRRIGATION SYSTEM TO BE INSTALLED BY CONTRACTOR COORDINATE WITH OWNER PATH OF TRAVEL.
- DASHED LINE INDICATES ACCESSIBLE

Consistent of Documents
 This document, its issues and drawings are the property of Integrated Designs by SOMAM, Inc. for any other project without written authorization. © COPYRIGHT 2014

integrated designs by SOMAM, Inc.
 ARCHITECTURE · ENGINEERING · INTERIOR DESIGN · CONSTRUCTION MANAGEMENT
 6011 N. Fresno, Suite 150 - Fresno, California 93710
 Phone (559) 438-0881 For (559) 438-0882 E-Mail: design@somam.com
www.integrateddesigns.com

Revision:	Revision Description:	Rev. Date:	Revision:	Revision Description:	Rev. Date:

Sheet Title: **ENLARGED SITE PLANS**
 Issue Date: **06/19/15**
 Date: **06/18/15**
 Designer: **JMF**
 DR: **JMF**
 PC: **JMF**

Project Name & Address:
SITE ACCESS
MT. VERNON ELEMENTARY SCHOOL
 BAKERSFIELD CITY SCHOOL DISTRICT
 2161 POTOMAC AVE BAKERSFIELD, CA 93307

Job No.: **5165**
 Sheet No.: **A1.02**

Released by: **JOHN FRANCOIS**