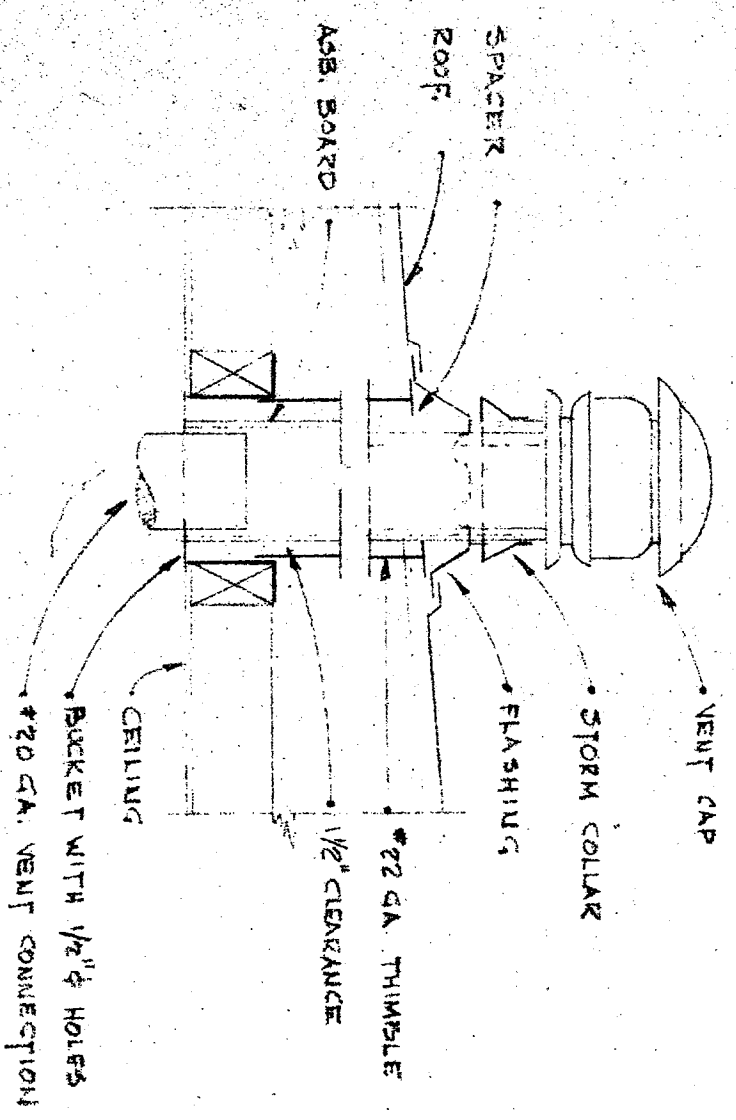
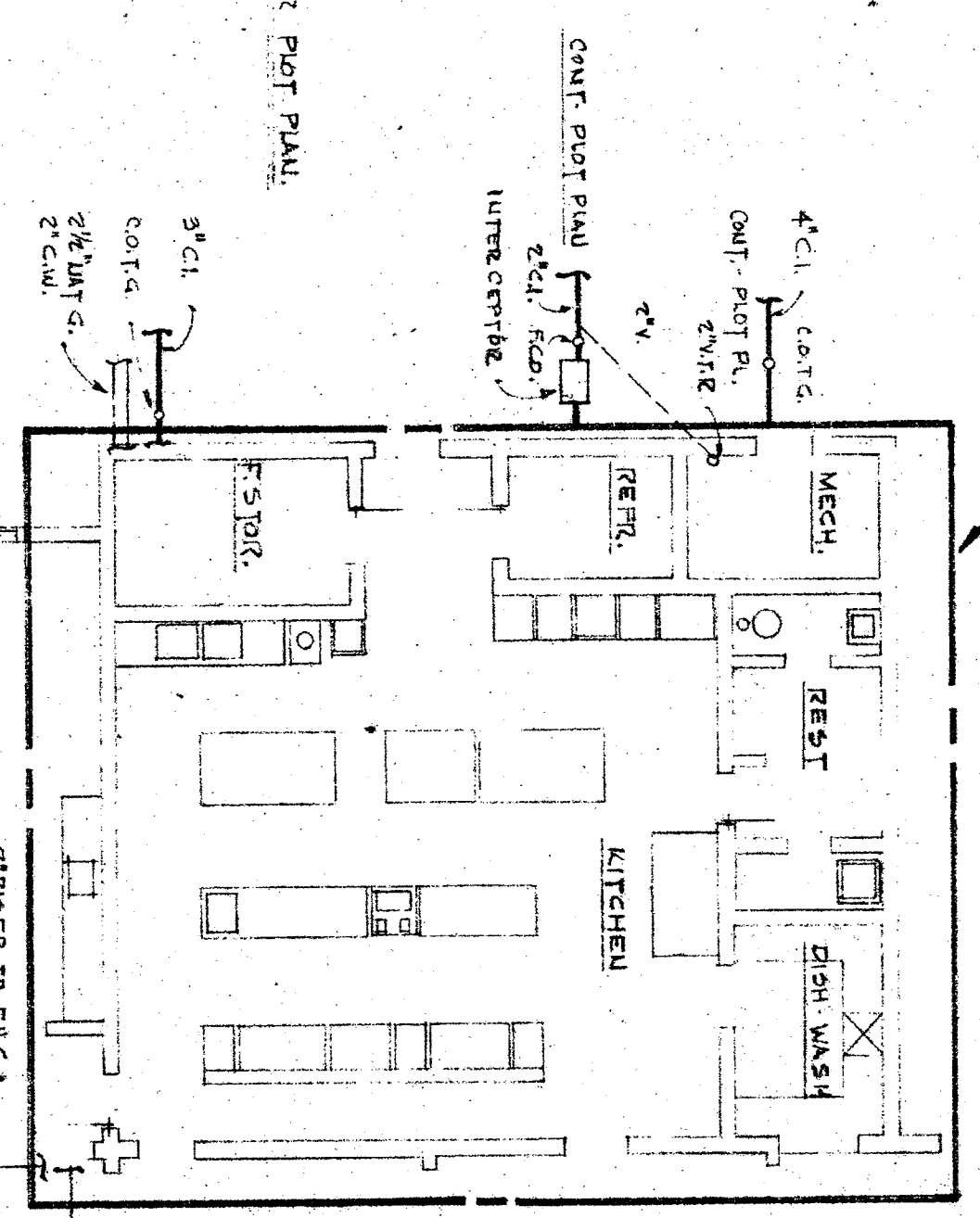


NOTE: REFER BALANCED W/ PLUMBING PLAN FOR KITCHEN AREA THIS SHEET.

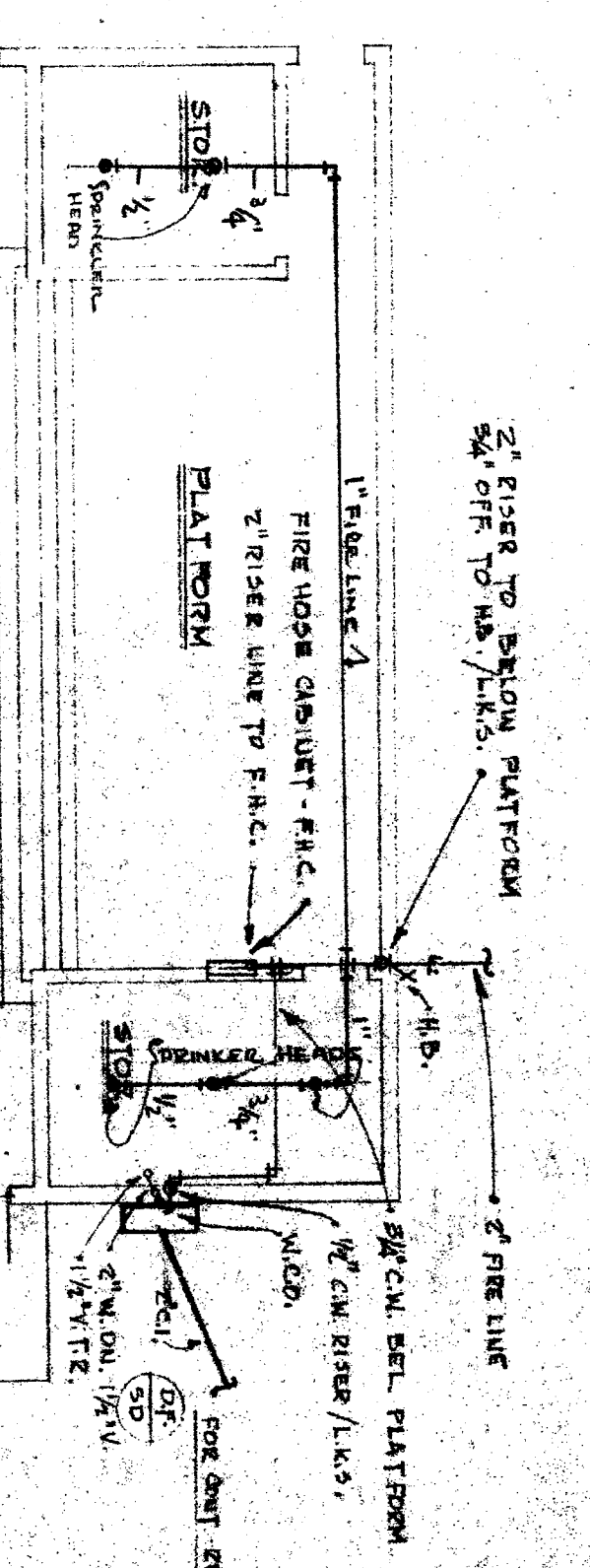
FOR CONT REFER PLUMBING PLAN



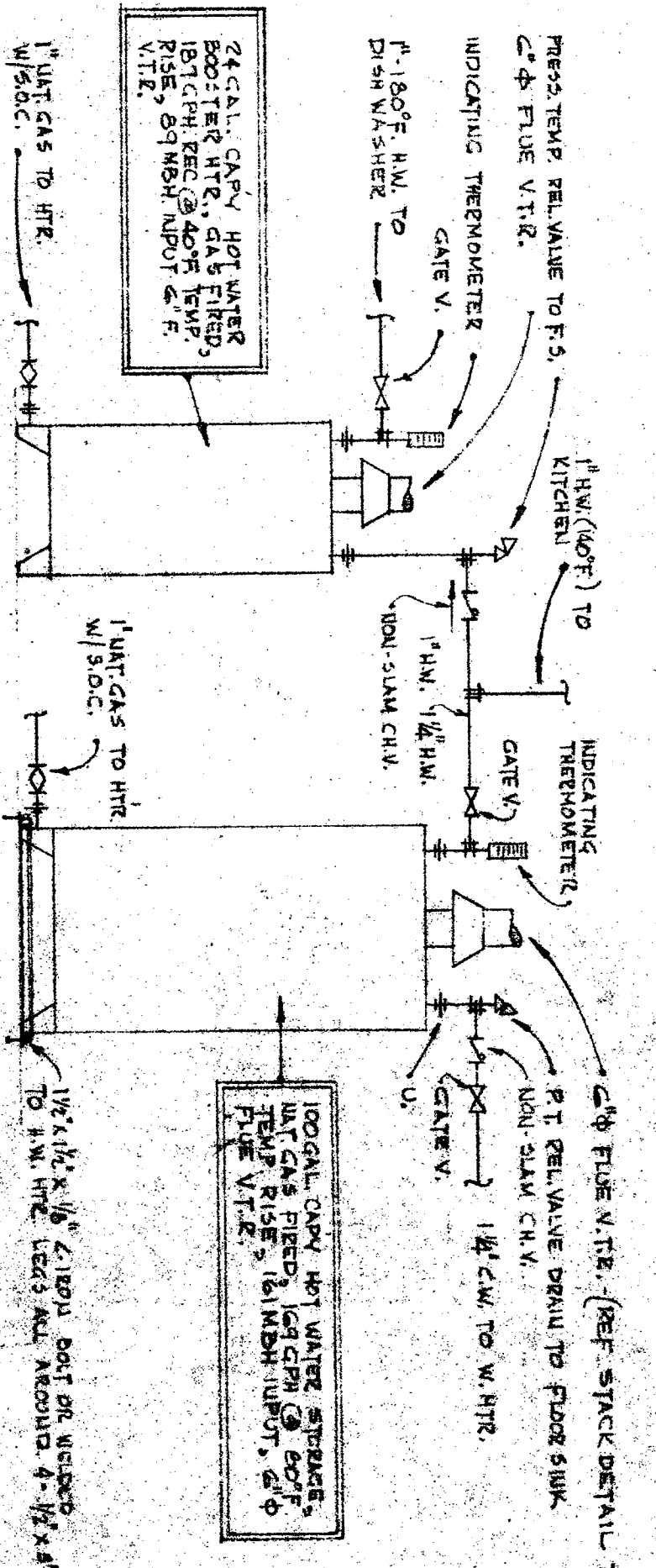
STACK DETAIL - TYPICAL
N.T.S.



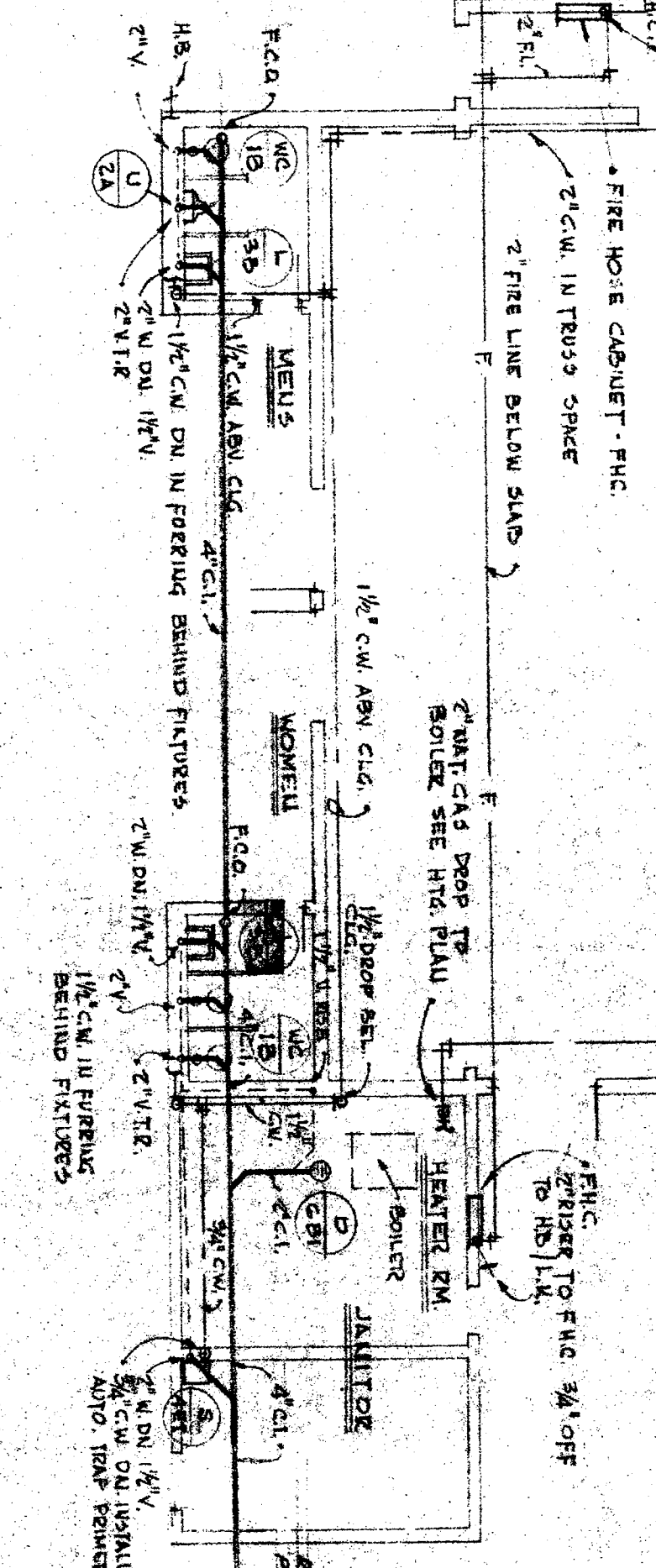
MULTI-PURPOSE ROOM



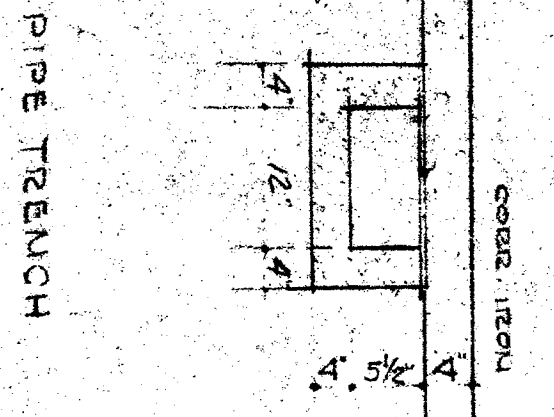
PLUMBING PLAN FOR MULTI-PURPOSE BUILDING
SCALE: 1/8"=1'-0"



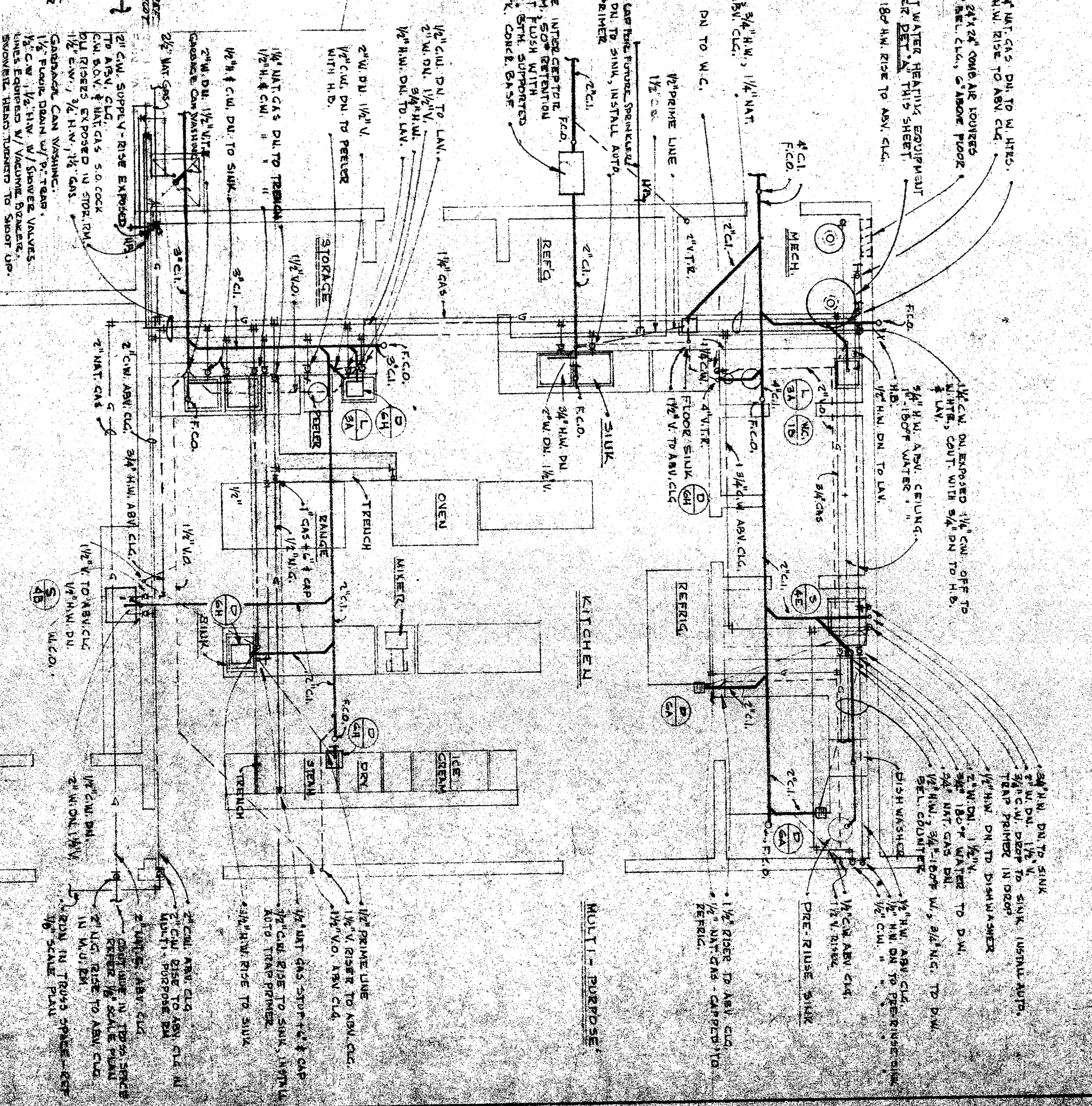
SCHEMATIC PIPING LAYOUT FOR WATER HEATERS - DETAIL
N.T.S.



CONFERENCE ROOM



PIPE TRENCH



KITCHEN

MULTI-PURPOSE

APPROVED BY
BOARD OF EDUCATION
BAKERSFIELD CITY SCHOOL DISTRICT
DATE: 10/17/59
BY: [Signature]

P L U M B I N G L A Y O U T
MULTI-PURPOSE ROOM
MT. VERNON SCHOOL DISTRICT
BAKERSFIELD, CALIFORNIA

C. Barton Alford
A R C H I T E C T
1519 CALIFORNIA AVENUE
BAKERSFIELD, CALIFORNIA