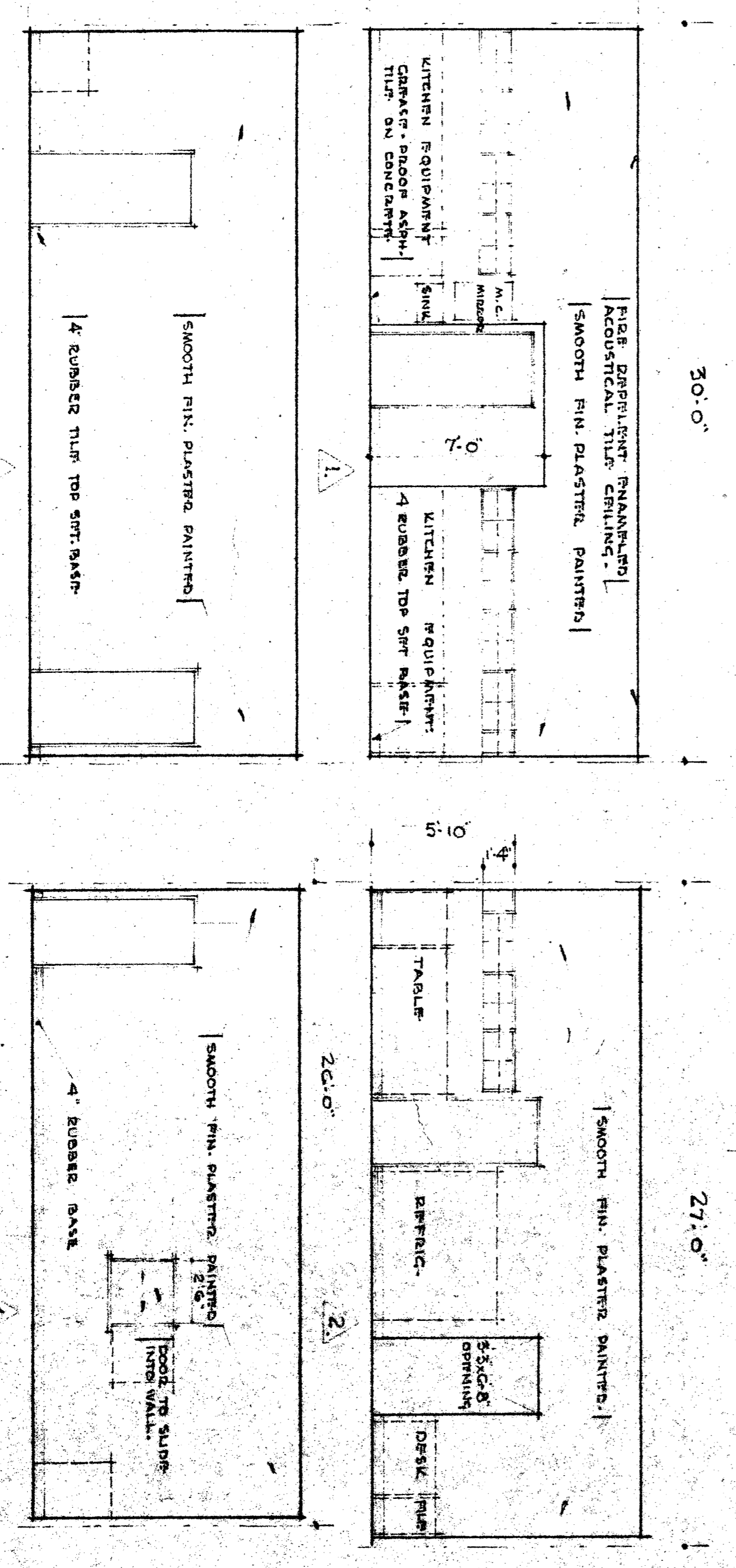
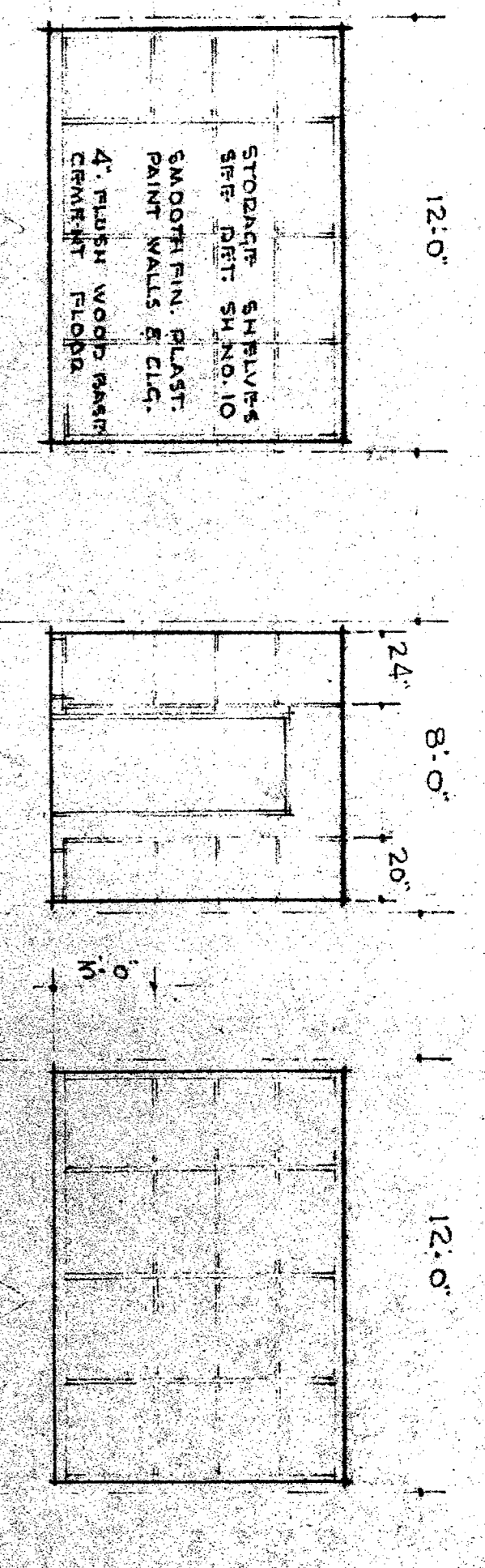


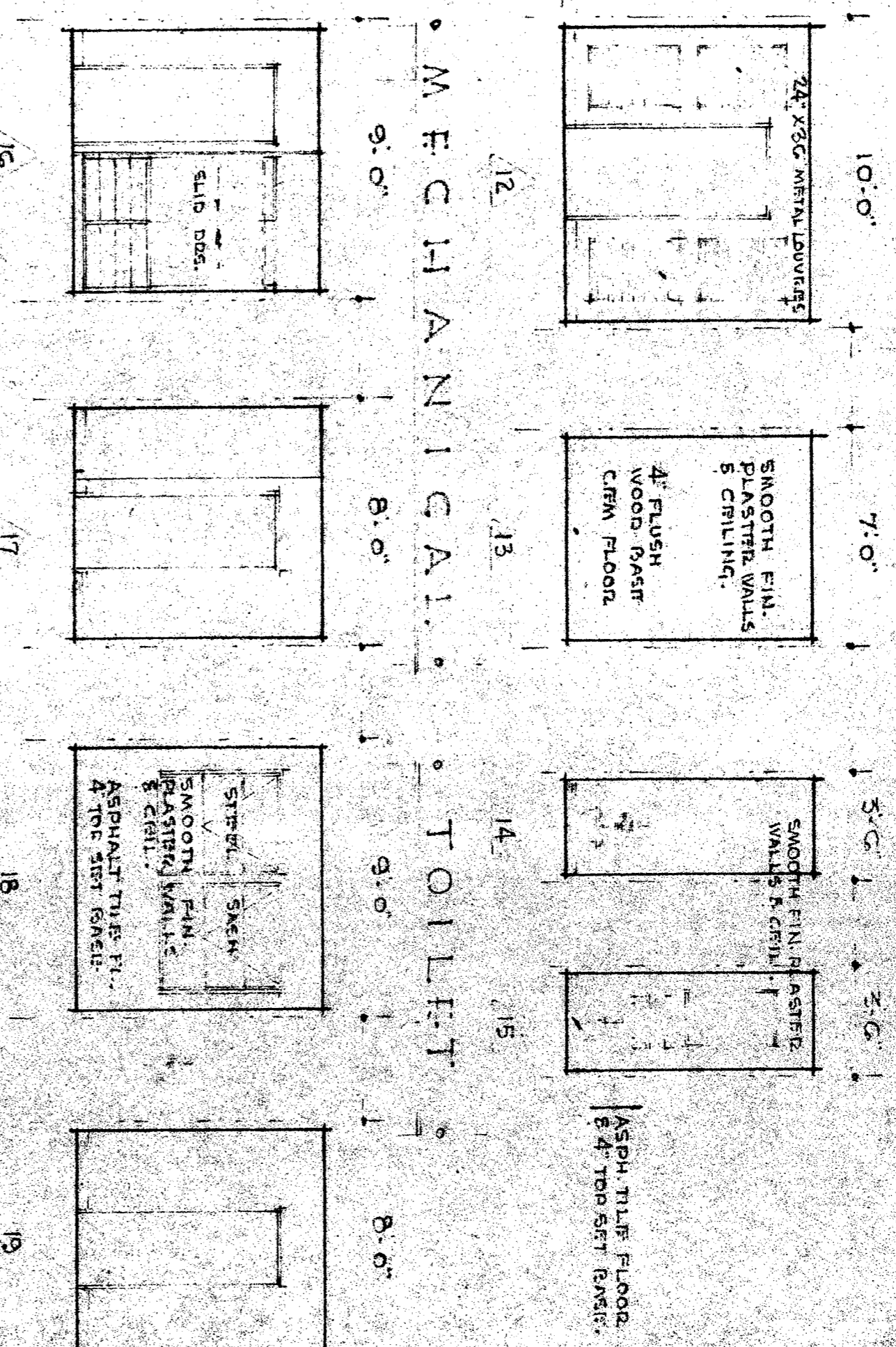
KITCHEN PLAN
1/4" = 1'-0"



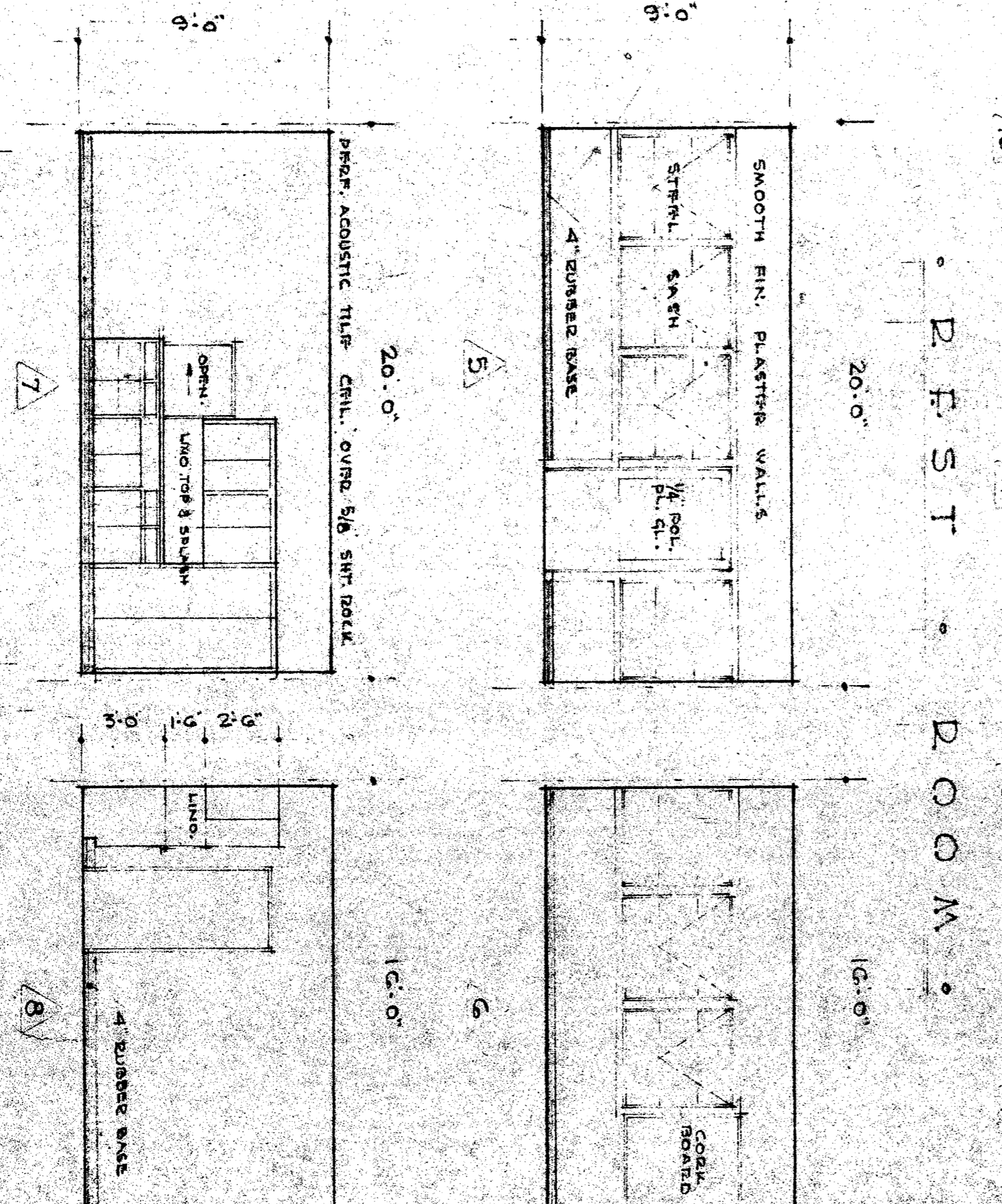
KITCHEN ELEVATIONS
1/4" = 1'-0"



STORAGE ROOM
1/4" = 1'-0"



MECHANICAL TOILET
1/4" = 1'-0"



CONFERENCE ROOM
1/4" = 1'-0"

APPROVED BY
BOARD OF EDUCATION
BARKERSFIELD CITY SCHOOL DISTRICT
DATE: *July 18, 1939*
BY: *W. J. Barton*
SUPERVISOR TO SCHOOL DISTRICT
EXHIBIT ORDERED

STATE OF CALIFORNIA - DEPARTMENT OF PUBLIC WORKS
DIVISION OF ARCHITECTURE
19177 APPROVED SEP 15 1939
BY: *W. J. Barton*
SUPERVISOR TO SCHOOL DISTRICT

KITCHEN PLAN & INTERIOR ELEVATIONS
MULTI-PURPOSE ROOM.
UT. VERDOLU SCHOOL.
BARKERSFIELD CITY SCHOOL DISTRICT

c. barton alford
ARCHITECT
1515 CALIFORNIA AVENUE
BARKERSFIELD, CALIFORNIA

