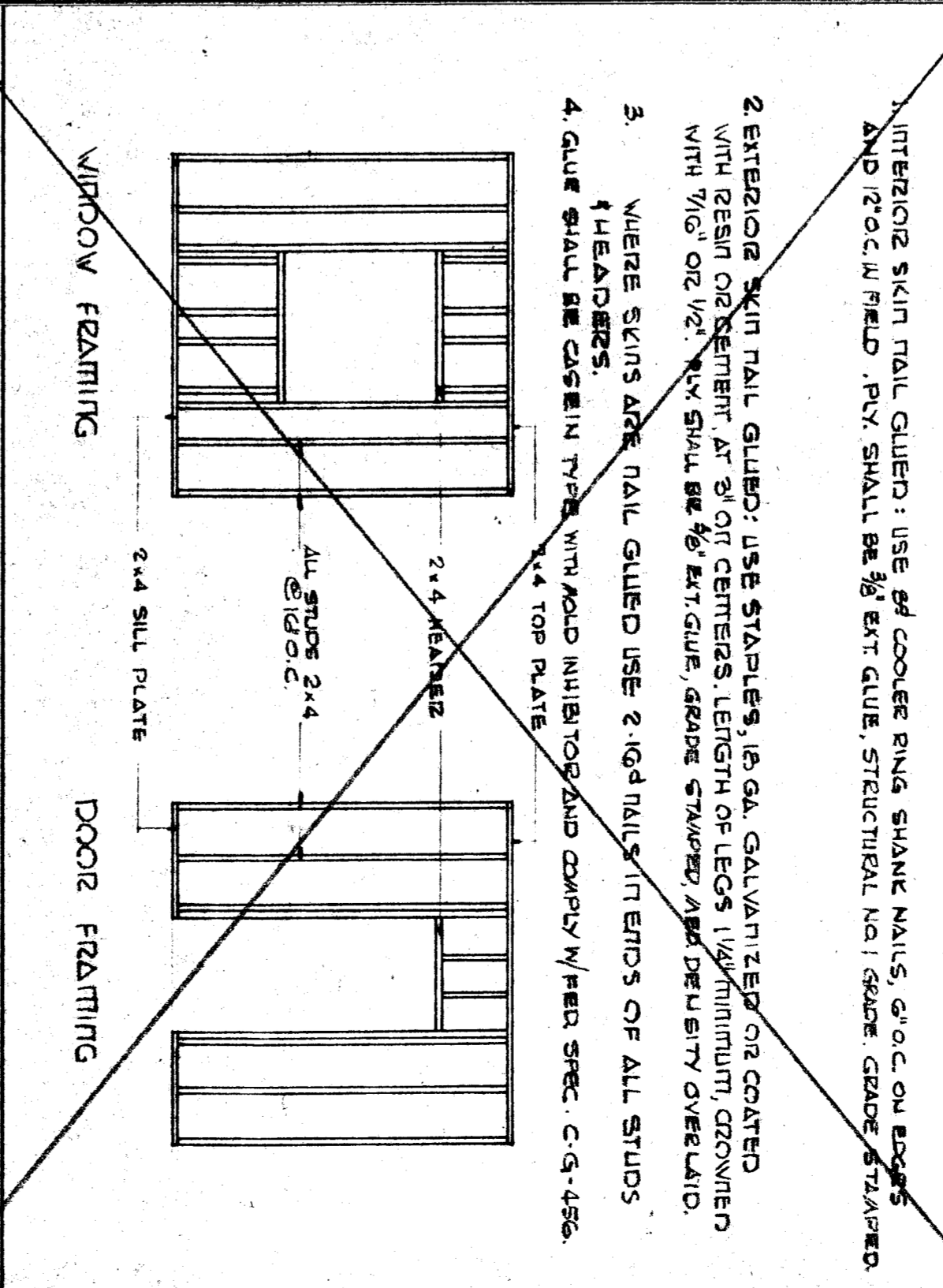
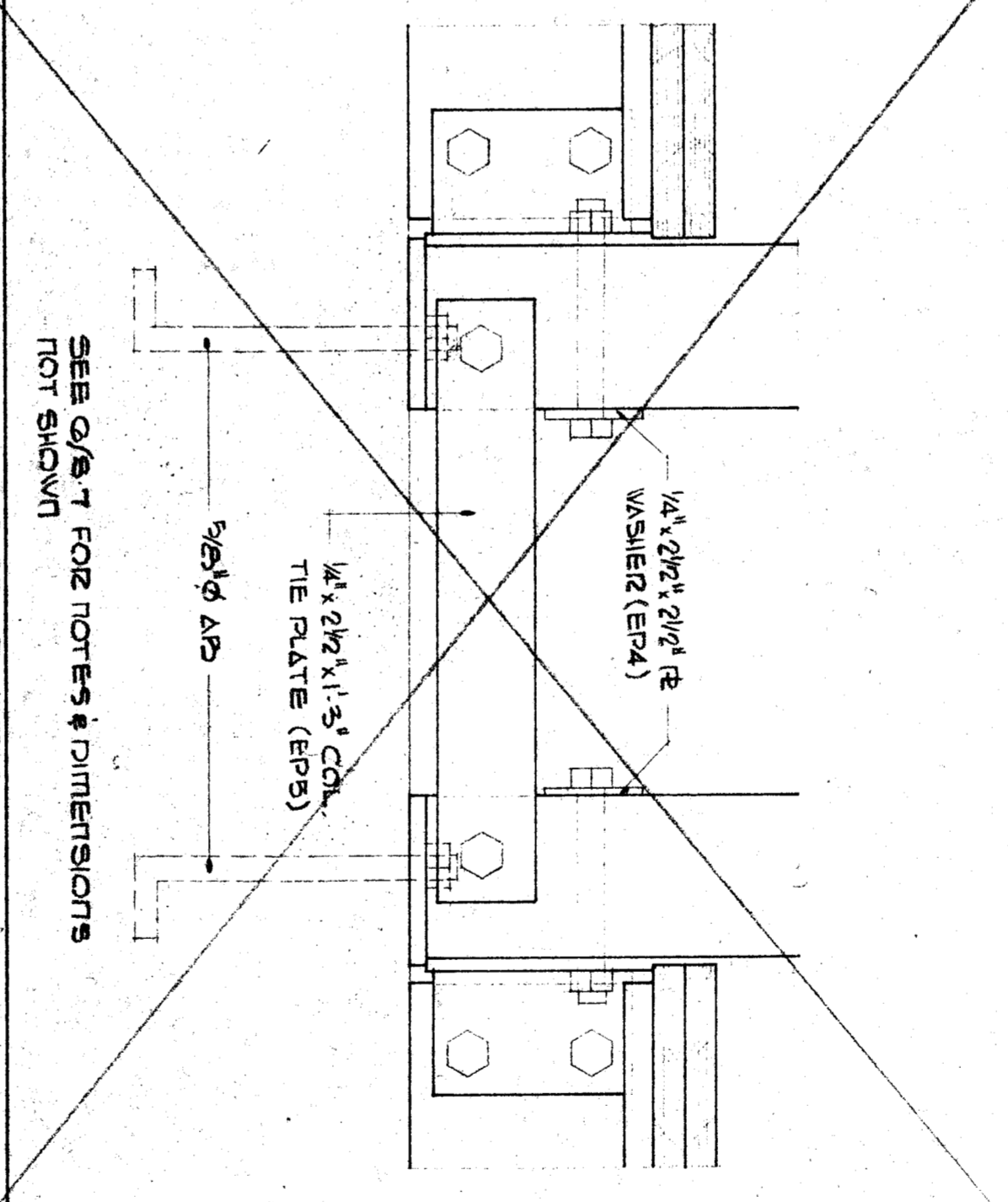
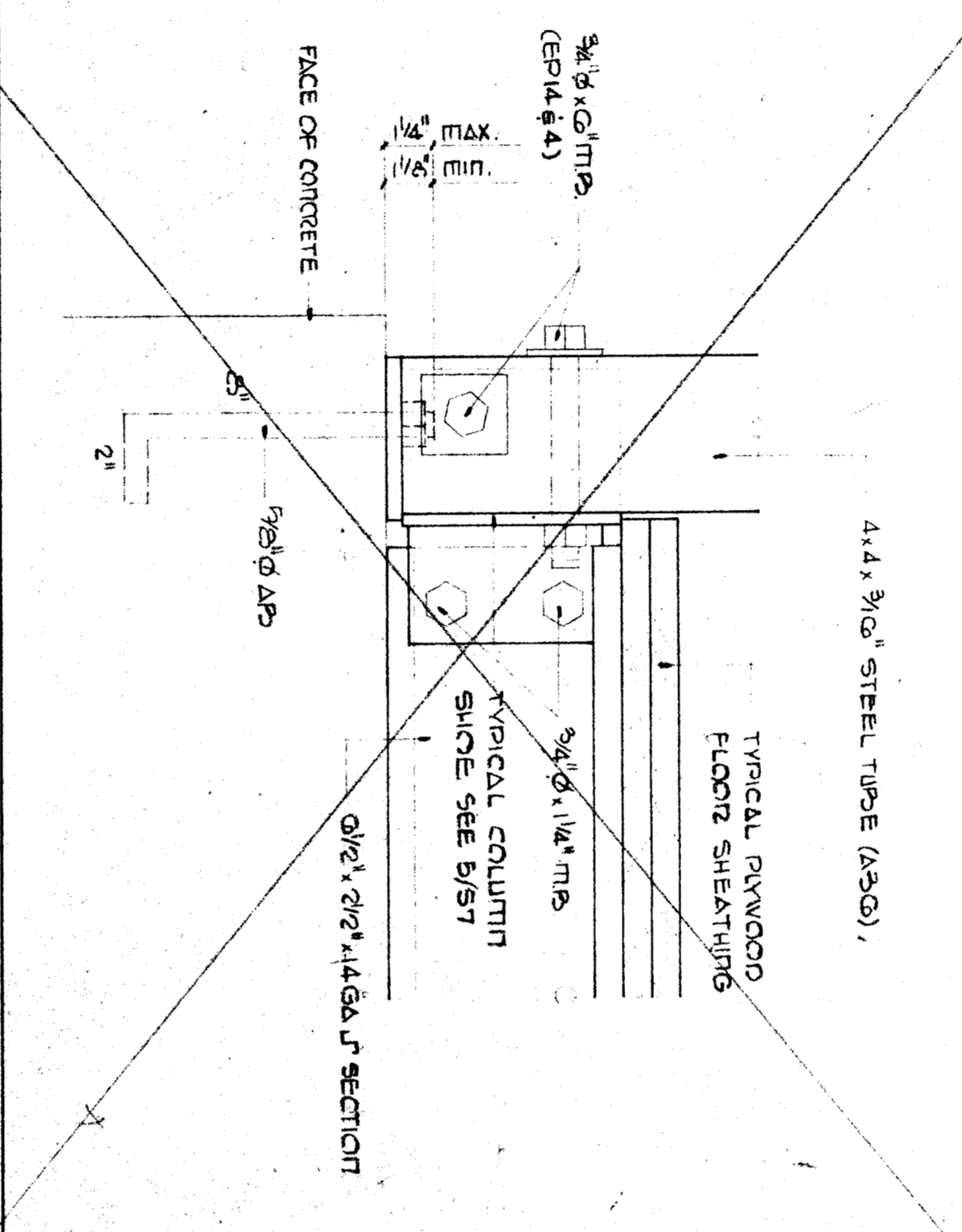
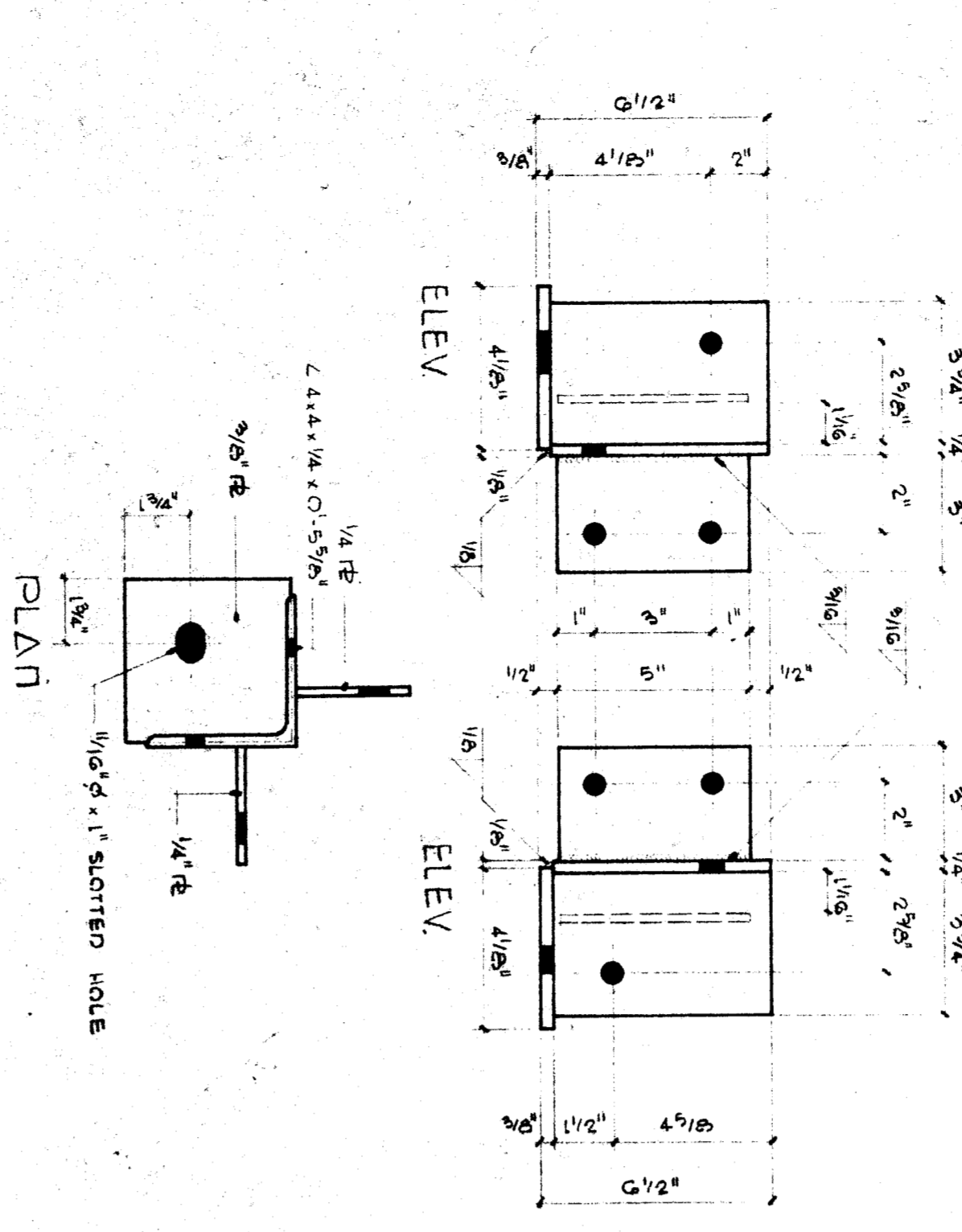


1 ELEVATION of COLUMN & SHOE S/7 END MODULE

2 FLOOR DETAIL S/7 SIDE WALL

3 FLOOR DETAIL S/7 ADJOINING MODULES

4 COLUMN TIE DETAIL S/7 ADJOINING MODULES



5 COLUMN SHOE DETAIL S/7

6 ELEVATION of COLUMN & SHOE DOUBLE UNIT S/7 END MODULE

7 COLUMN TIE DETAIL DOUBLE UNIT S/7 ADJOINING MODULES

8 TYPICAL OPENINGS W/1'-0"

SEE SHEET "F1" FOR WALL PANEL DETAILS

BY	REVISIONS	DATE	NO.	SET NO.	REFERENCE PLAN

APPROVED BY

3 2 6 8 2 APPROVED OCT 11 1983

OFFICE OF ARCHITECTURE & CONSTRUCTION

APPROVED BY

STATE FIRE MARSHAL

APPROVED BY

SCHOOL DISTRICT

DESIGNED BY

CHECKED BY

FLOOR FRAMING DETAILS 3" x 1'-0"

BAKERSFIELD CITY S.D.

BAKERSFIELD, CALIFORNIA

**SPEEDSPACE CORPORATION**

RELOCATABLE BUILDINGS

P.O. Box 390 - Santa Rosa, California 95401

Telephone (707) 544-1661

**AISC**

Approved Fabricator

SPEEDSPACE JOB NO. 53732-5

SHEET NO. 5.7

DOF 31