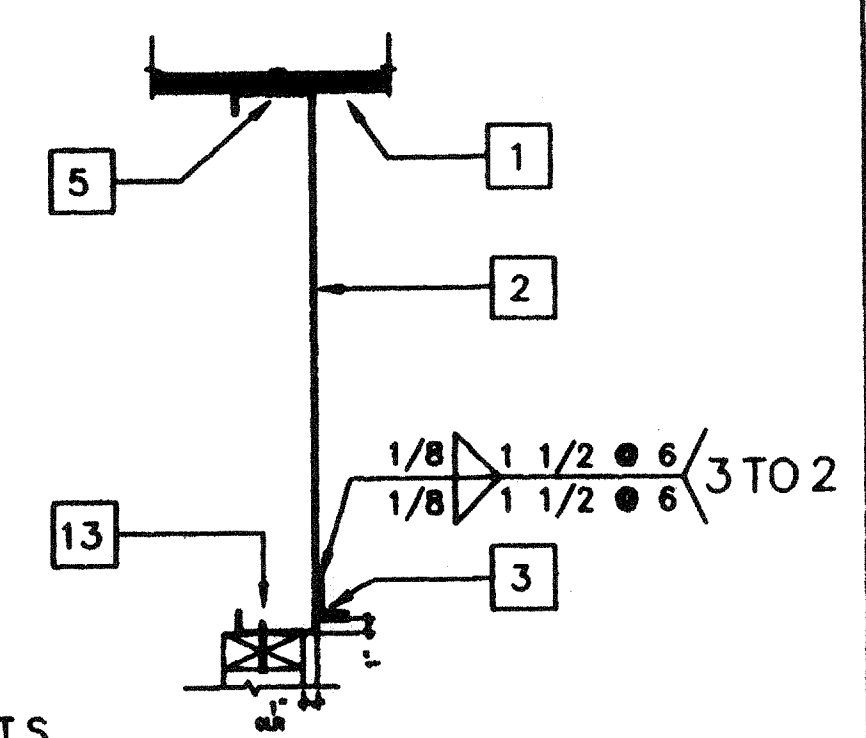


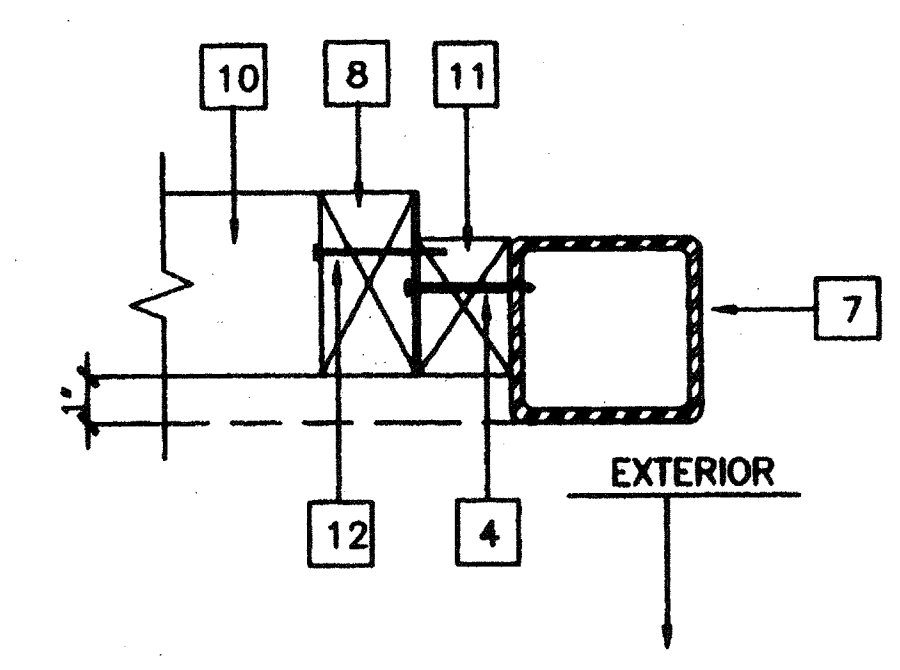
KEY NOTES

- 1 PLYWOOD ROOF SHEATING
- 2 [10GA.X HEADER TYPICAL.
- 3 1 1/2 X 1 1/2 X 16GA.
- 4 #10 S.T.S.M.S @24" O.C. OR 0.145# SHOT PIN AT 24" O.C.
- 5 E.N. PLYWOOD TO ROOF BEAM. (SEE STRUCTURAL)
- 6 FLOOR BEAM (SEE STRUCTURAL)
- 7 TUBE STEEL COLUMN.
- 8 2X4 STUD @ 16" O.C. TYP.
- 9 16d BOX NAILS @ 8" O.C.
- 10 2X4 SILL PLATE.
- 11 2X TRIMMER @ CORNER.
- 12 16d @ 24" O.C.
- 13 #10 S.T.S.M.S @ 16" O.C. OR AEROSMITH AKN 144.0175 DRIVE PIN.



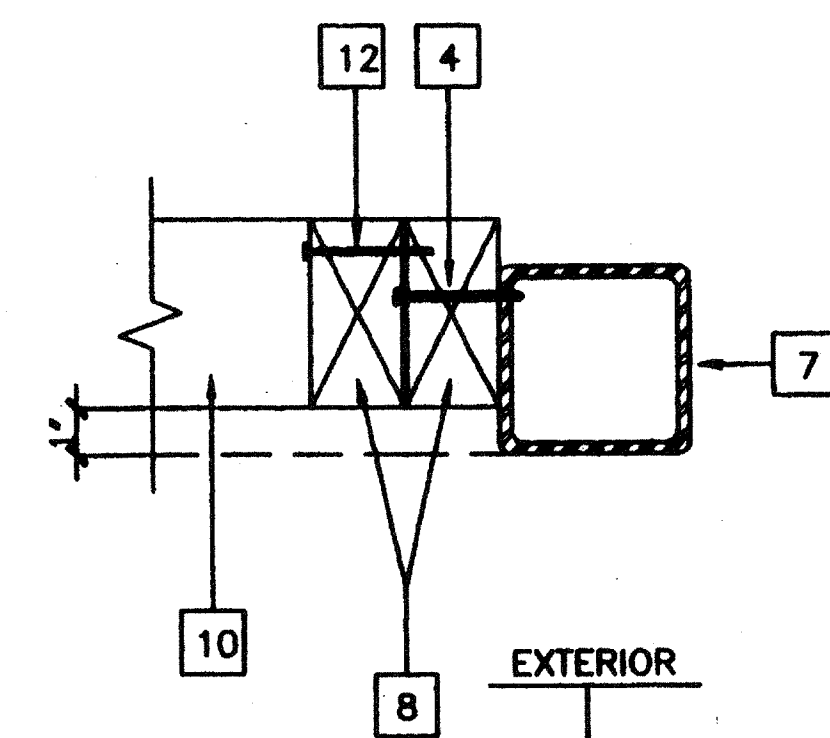
SCALE: N.T.S.

END WALL AT ROOF



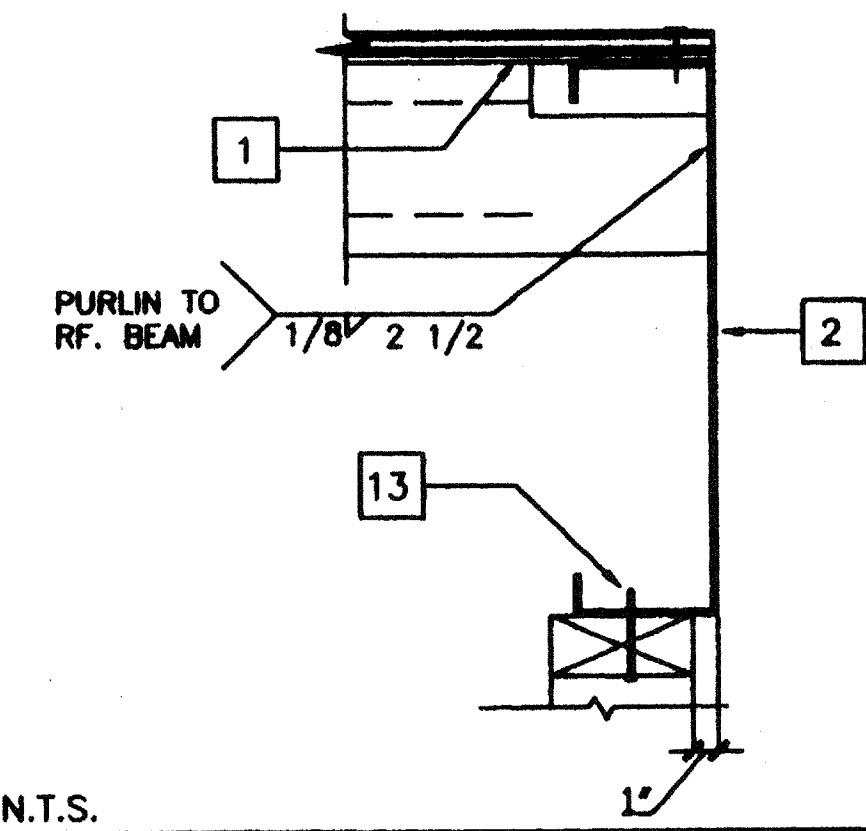
SCALE: 3"=1'

COLUMN AT END WALL



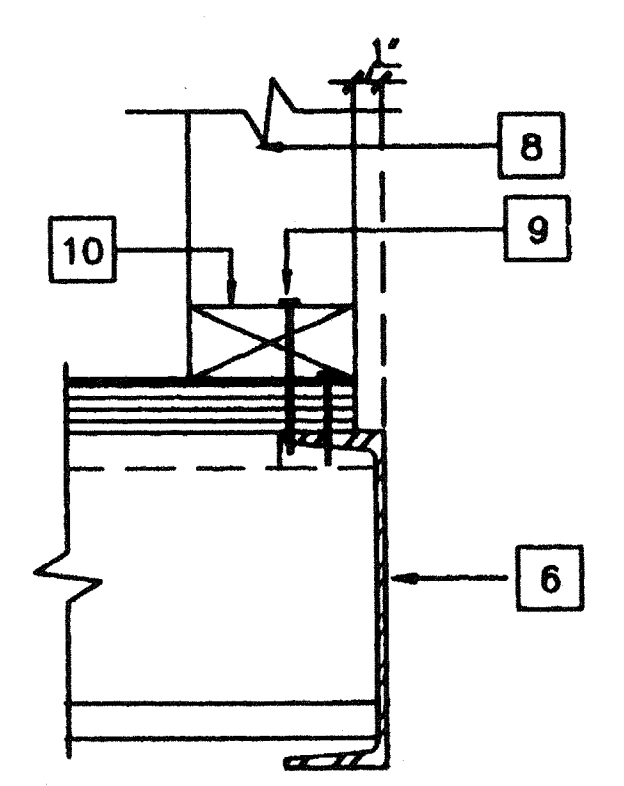
SCALE: 4"=1'

COLUMN AT SIDE WALL



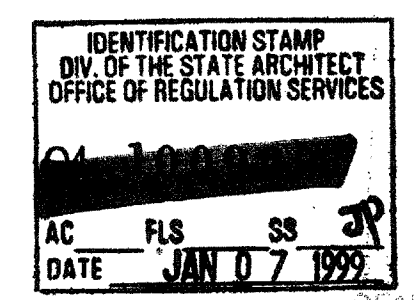
SCALE: N.T.S.

ROOF PURLIN AT ROOF BEAM



SCALE: 3"=1'

WALL SILL AT FLOOR



IDENTIFICATION STAMP
 DIV. OF THE STATE ARCHITECT
 OFFICE OF REGULATORY SERVICES
 APP#3 117168
 AC/FLS/SS/TH
 Date JAN 04 2018

STKP-42 11/24/98

	17		13		9		5
	18		14		10		6
	19		15		11		7
	20		16		12		8

REVISIONS

1			
2			
3			
4			
5			

Electrical Engineer's Seal

Mechanical Engineer's Seal

Structural Engineer's Seal

Architect's Seal

Division of the State Architect

MODTECH INC.
 2830 BARRETT AVENUE
 PERRIS, CALIF. 92572
 PH (909) 943-4014
 FAX (909) 940-0427

PROJECT NUMBER: 29 86

© MODTECH, INC. 1997

drawn by 4012-088
 checked by 05 JAN 99
 date
 Modtech project no.
 Modtech Index No.

WALL FRAMING DETAILS

S5.2