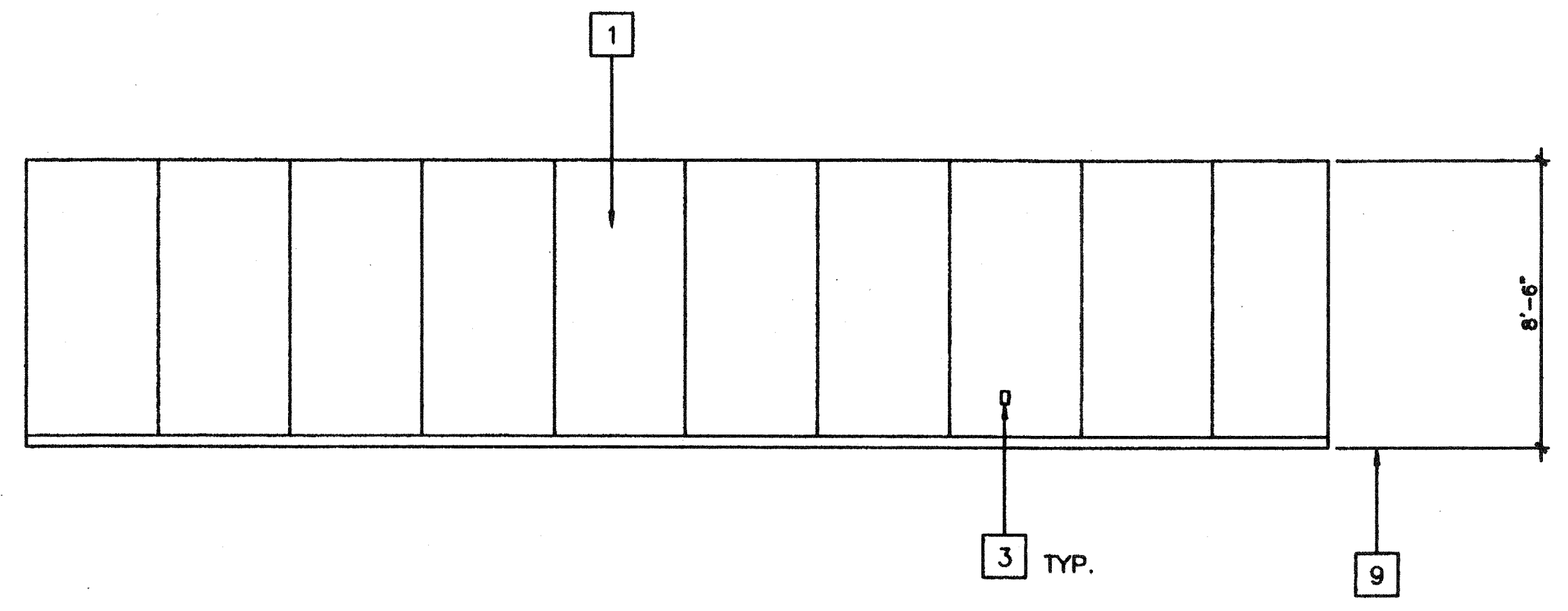
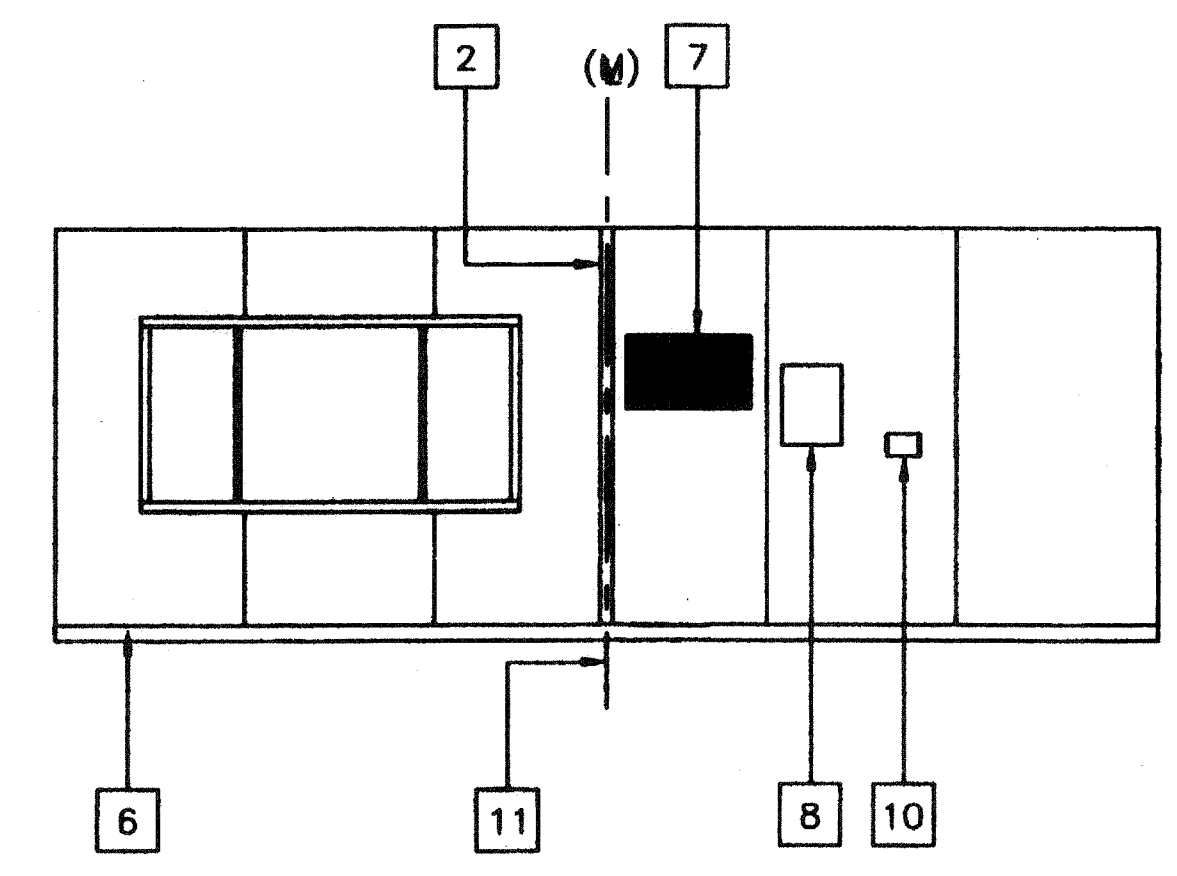


**KEY NOTES**

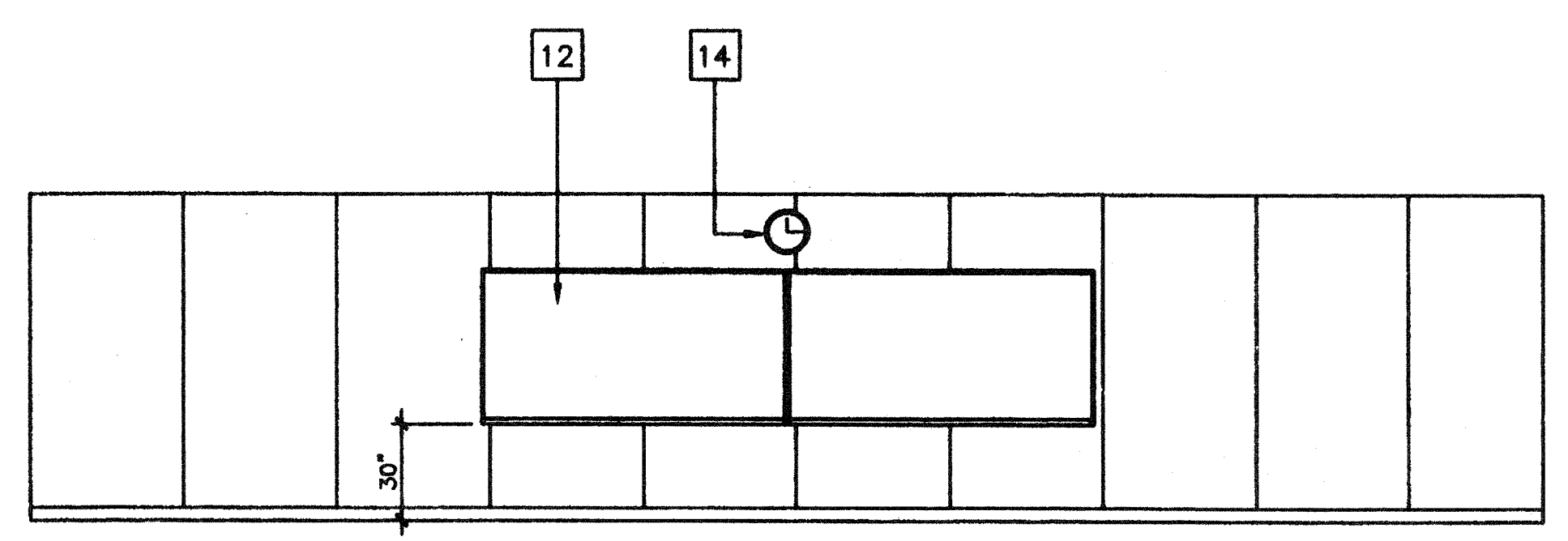
- 1 TYPICAL INTERIOR FINISH (SEE A5.0)
- 2 CLOSURE AT MODULAR JOINT
- 3 DUPLEX WALL RECEPTACLE (EL)
- 4 FIRE ALARM PULL STATION (EL)
- 5 LIGHT SWITCH (EL)
- 6 TOP SET BASE (TYPICAL) SEE FINISH SCHED.
- 7 RETURN AIR GRILL
- 8 ELECTRICAL PANEL (EL)
- 9 FINISH FLOOR
- 10 THERMOSTAT (HV)
- 11 MODULAR JOINT
- 12 8040 MARKBOARD. TYPICAL FOR (2)
- 13 FIRE EXTINGUISHER: 5LBS. DRY CHEMICAL WITH 2A-10BC U.L. RATING ON WALL MTD. BRACKET, HANDLE AT 48" A.F.F.
- 14 12" DIA. ELECTRIC CLOCK (EL)



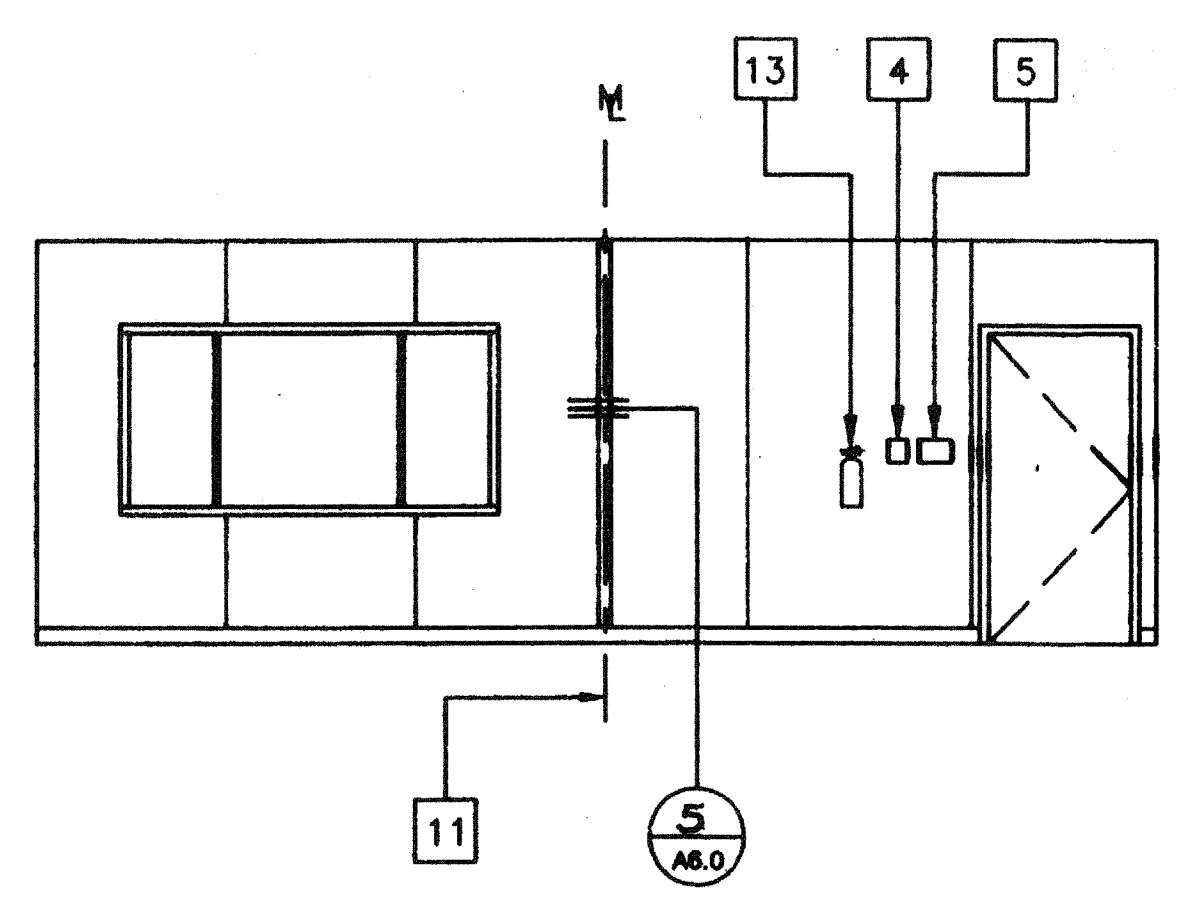
1



2



3



4

**INTERIOR ELEVATIONS (24' X 40')**

SCALE 1/4"=1'-0"

IDENTIFICATION STAMP  
DIV. OF THE STATE ARCHITECT  
OFFICE OF REGULATION SERVICES  
AC: [Signature] FLS: [Signature] SS: [Signature] J1  
DATE: JAN 07 1999

IDENTIFICATION STAMP  
DIV. OF THE STATE ARCHITECT  
APP#3 117168  
AC: [Signature] FLS: [Signature] SS: [Signature] TN  
Date: AUG 04 2018  
**STKP-42**  
11/24/98

REVISED

REVISIONS	Electrical Engineer's Seal	Mechanical Engineer's Seal	Structural Engineer's Seal	Architect's Seal	Division of the State Architect

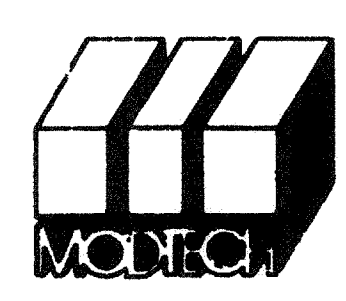
Electrical Engineer's Seal

Mechanical Engineer's Seal

Structural Engineer's Seal

Architect's Seal  
LICENSED ARCHITECT  
GEORGE C. EDWARDS  
PEN. 9-30-97  
STATE OF CALIFORNIA

Division of the State Architect  
IDENTIFICATION STAMP  
DIV. OF THE STATE ARCHITECT  
OFFICE OF REGULATION SERVICES  
PC-966  
AC: [Signature] FLS: [Signature] SS: [Signature] J1  
DATE: JUN 23 1997



**MODTECH INC.**  
2830 BARRETT AVENUE  
PERRIS, CALIF. 92572  
PH (909) 943-4014  
FAX (909) 940-0427

PROJECT NUMBER: 2986

© MODTECH, INC. 1997

drawn by: 4012-088  
checked by: 05 JAN 99  
date: 05 JAN 99  
project no: 2986

**INTERIOR ELEVATIONS**

**A4.0**