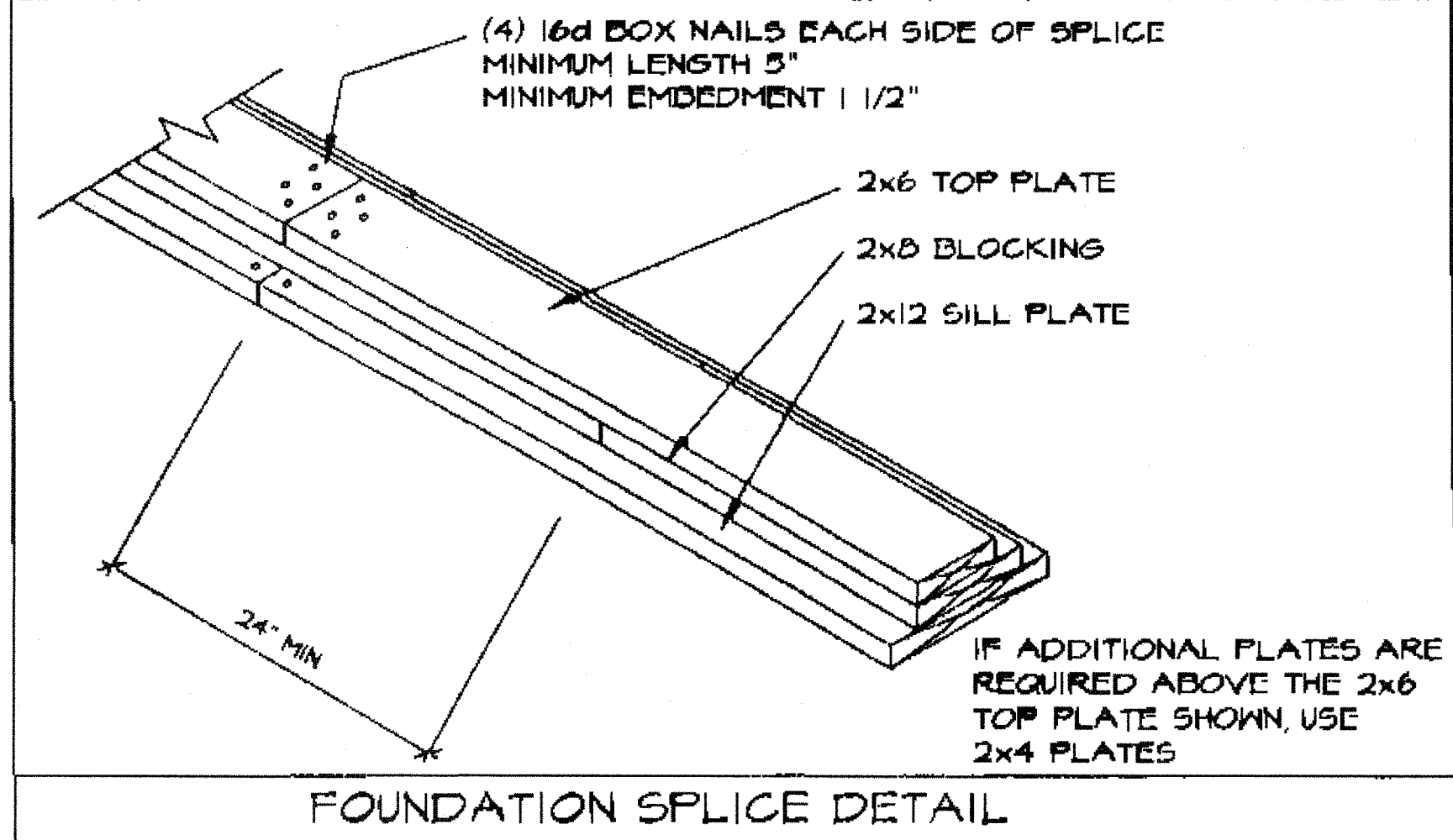


"MACHINE APPLIED 16d FASTENERS SHALL HAVE AN EMBEDMENT OF NOT LESS THAN 1/2" INTO SECOND MEMBER, AND SHALL BE NOT LESS THAN 3" IN OVERALL LENGTH"

THE ABOVE NAILS SHALL ALSO BE ACCEPTABLE FOR HAND NAILING, PROVIDED THE REQUIRED EMBEDMENT IS MAINTAINED



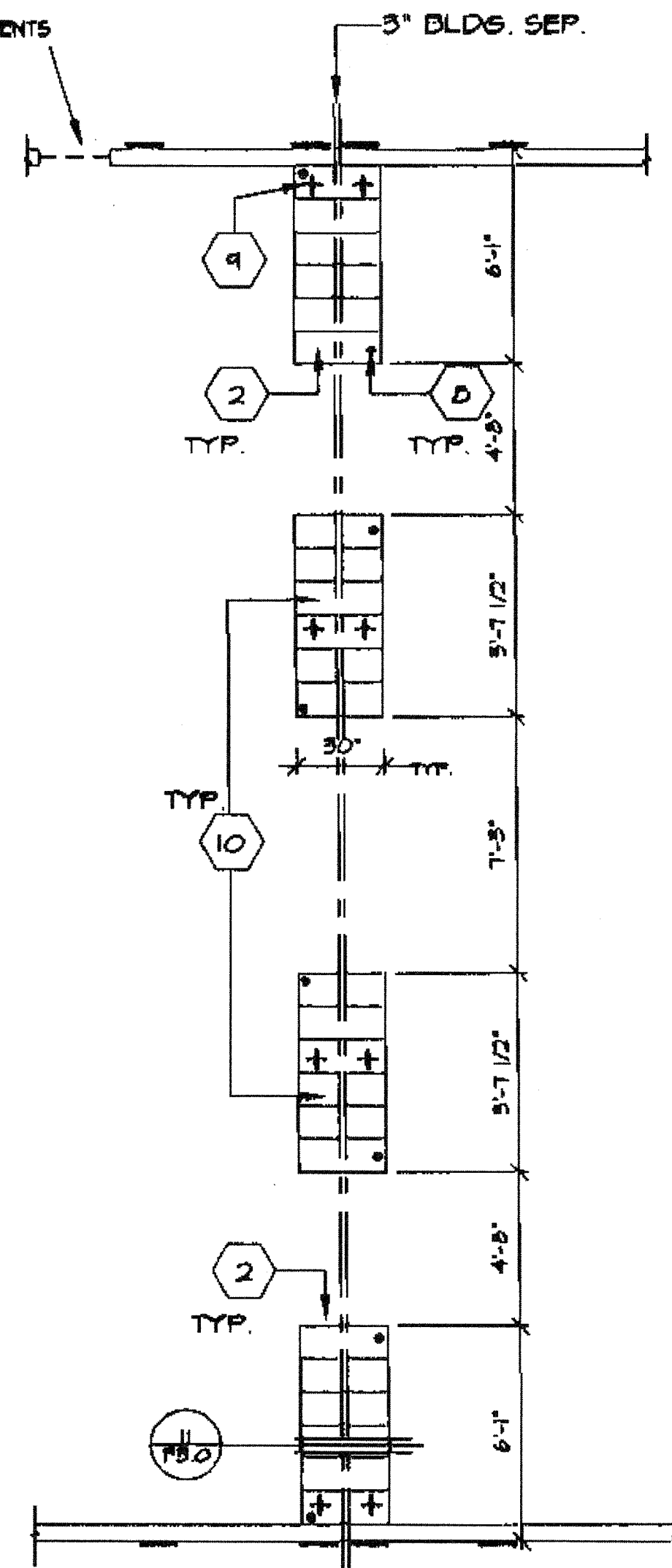
KEY NOTES

- 1 2"x6" SILL PLATE (END WALL)
- 2 6- 2X12X30" LONG SILL PADS
- 3 PIPE TO GRADE (TYP.)
- 4 3" HIGH BY 6'-6" LONG VENT
- 5 2X12 SILL PLATE (SIDE WALL)
- 6 4-2X12X30" LONG SILL PADS
- 7 6"x12"x10 GA. PLATES
- 8 1" Ø PIPE EA. END EA. PAD AT ADJ. BLDG. LINE
- 9 5/8" Ø X4" LAG (4-PER BLDG. MIN.)
- 10 6- 2X12X30" LONG SILL PADS

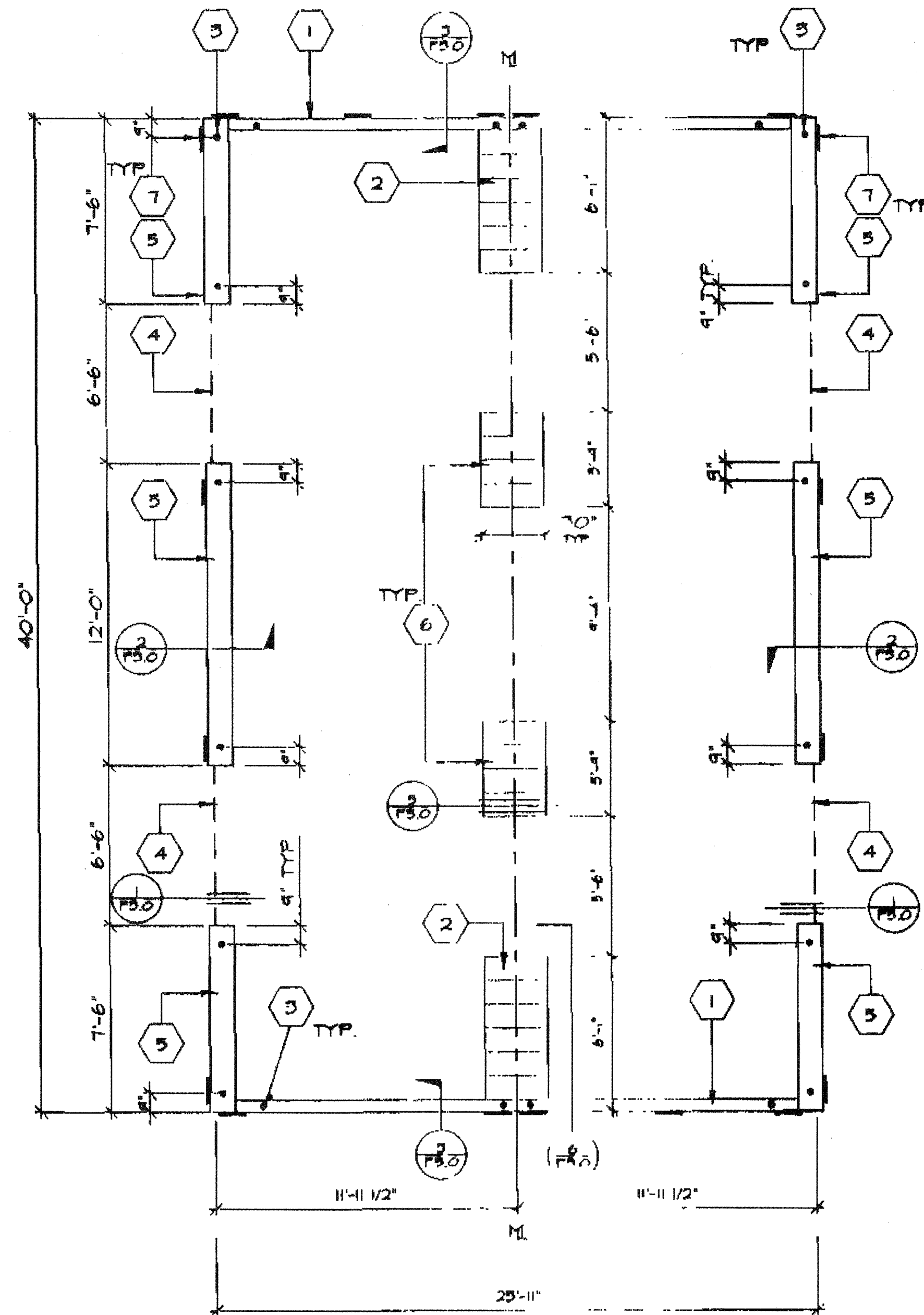
GENERAL NOTES:

- A. SOIL RESTRAINT: ON A.C. PAVING AND ON SOIL 1" O.D. GALVANIZED PIPE AT 10'-0" 12" PENETRATION BELOW SURFACE VERTICALLY. DRILL SILL 1-1/4" MAX. PIPE MAY BE DRIVEN MAX. OF 45° ANGLE TO VERTICAL. (18-1/2" LONG PIPE REQUIRED FOR PENETRATION AT 45° ANGLE)
- B. ON CONCRETE PAVING HILTI D5 D2-P10 THRU SILL PLATE:
END WALLS: 8" O.C.
SIDE WALLS: 22" O.C.
- C. WHERE SHIM STOCK IS REQUIRED FOR LEVELING USE 1/4", 1/2", OR 3/4" THICK PLYWOOD SAME WIDTH AS BLOCK. P.T.
- D. VERIFY DRAINAGE TO PREVENT WATER FROM FONDING BENEATH THE STRUCTURE. WITH DISTRICT ARCHITECT SITE PLANS
- E. ALL FOUNDATION MATERIAL SHALL BE HEM FIR
GROUND CONTACT: LP-22 (CCA 40)
ABOVE GROUND: LP-2 (CCA 25)
- F. FOUNDATION DESIGNED FOR 1000 PSF SOIL BEARING PRESSURE PER ORS IR 23-6.
ABOVE GROUND: LP-2

3" X 24" END WALL VENTS AS REQUIRED FOR ADJACENT BUILDING APPLICATIONS MIN. 10" FROM BLDG. CORNERS MIN. 10" FROM MODLINES MIN. 12" BLOCKING BETWEEN VENTS



PAD FTG'S AT ADJ. BLDG.



VENT CALCS.

BLDG'S SIZE 24' X 40' = 960 sq
 VENTILATION REQD 960 ÷ 150 = 6.4 sq
 3" X 6'-6" VENT = 1.625 sq
 4 VENTS X 1.625 sq = 6.5 sq
 6.5 sq > 6.4 sq

FOUNDATION (WOOD SILL)

24 x 40 - 50 PSF LL

SCALE 1/4"=1'-0"

REVISIONS ▲ ▲ ▲ ▲ ▲	ELECTRICAL	MECHANICAL	STRUCTURAL	ARCHITECT	DIVISION OF THE STATE ARCHITECT	 MODTECH INC. 2830 BARRETT AVE. PERRIS, CA. 92572 PH. (909) 943-4014 FX. (909) 940-0427 CONFIDENTIAL - THIS DOCUMENT AND THE INFORMATION CONTAINED HEREIN ARE THE PROPERTY OF MODTECH INC. UNAUTHORIZED COPYING, DISCLOSURE, OR OTHER UNAUTHORIZED USES ARE PROHIBITED.	JOB NO. IDENTIFICATION STAMP DIV. OF THE STATE ARCHITECT APP#3 117168 AC / FLS / SS / TN Date: DEC 04 2015	 REVISED APR 27 1996 PC 275 DATE: 7-19-96	DRAWN BY DATE CHECKED BY DATE FOI