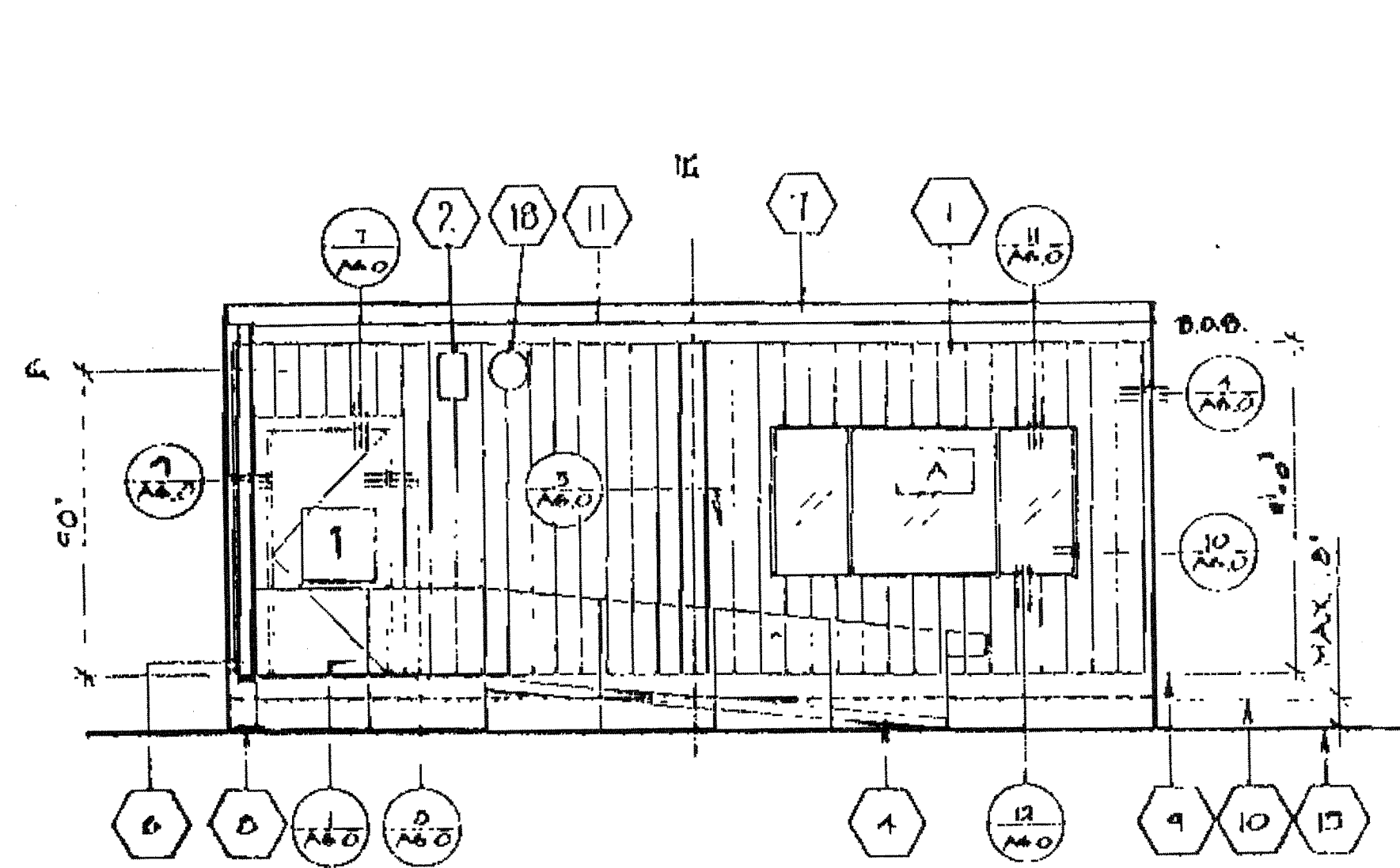


**LEGEND**

- 1 EXTERIOR DOOR (SEE DOOR SCHED)
- A EXTERIOR WINDOW (SEE FINISH SCHED)

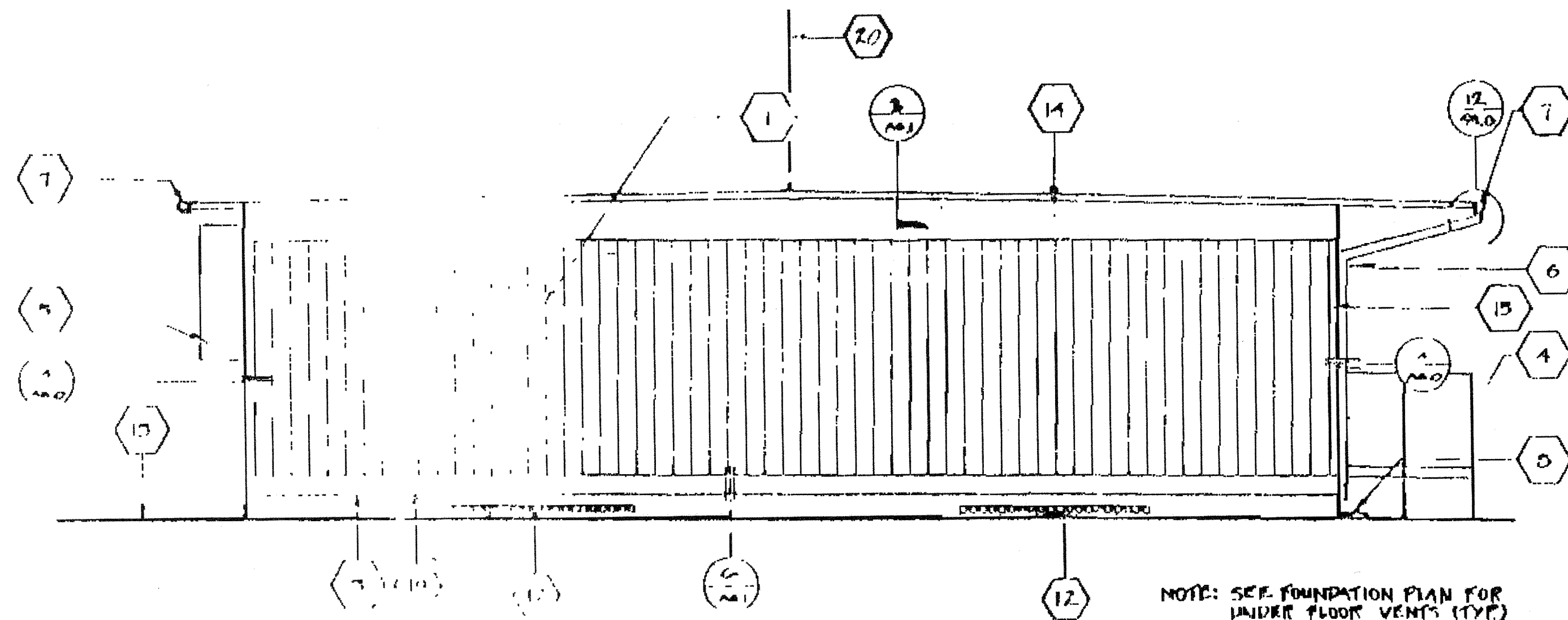
**KEY NOTES**

- 1 TYPICAL EXTERIOR SIDING (SEE FINISH SCHED)
- 2 EXTERIOR LIGHT FIXTURE (SEE SPECIFICATIONS)
- 3 TOP OF SKIRTING
- 4 RAMP AND LANDING SEE SHT R-1.0
- 5 HVAC UNIT SEE SHT M-1
- 6 DOWNSPOUT (TYP) FASTEN TO DLOG TYP 2 PLACES (SEE (YAG.))
- 7 CONTINUOUS GUTTER WITH DOWNSPOUT (LOCATION OF DOWNSPOUT SHOWN ON ROOF PLAN A2.0)
- 8 SPLASH BLOCK (BY OTHERS)
- 9 FINISH FLOOR LINE
- 10 BOTTOM FLANGE OF FLOOR BEAM
- 11 ROOF HEADER
- 12 VENT SEE FOUNDATION PLAN
- 13 FINISH GRADE
- 14 ROOF BEAM (SEE STRUCTURAL)
- 15 COLUMN (SEE STRUCTURAL)
- 16 ELECTRICAL STUD-OUT (1/4"Ø) (TYPICAL)
- 17 GROUND STUD-OUT 1/2"Ø (TYPICAL)
- 18 FIRE ALARM HORN NIC.
- 19 NEMA 6"X6" GUTTER BOX
- 20 P.D.C.T.E



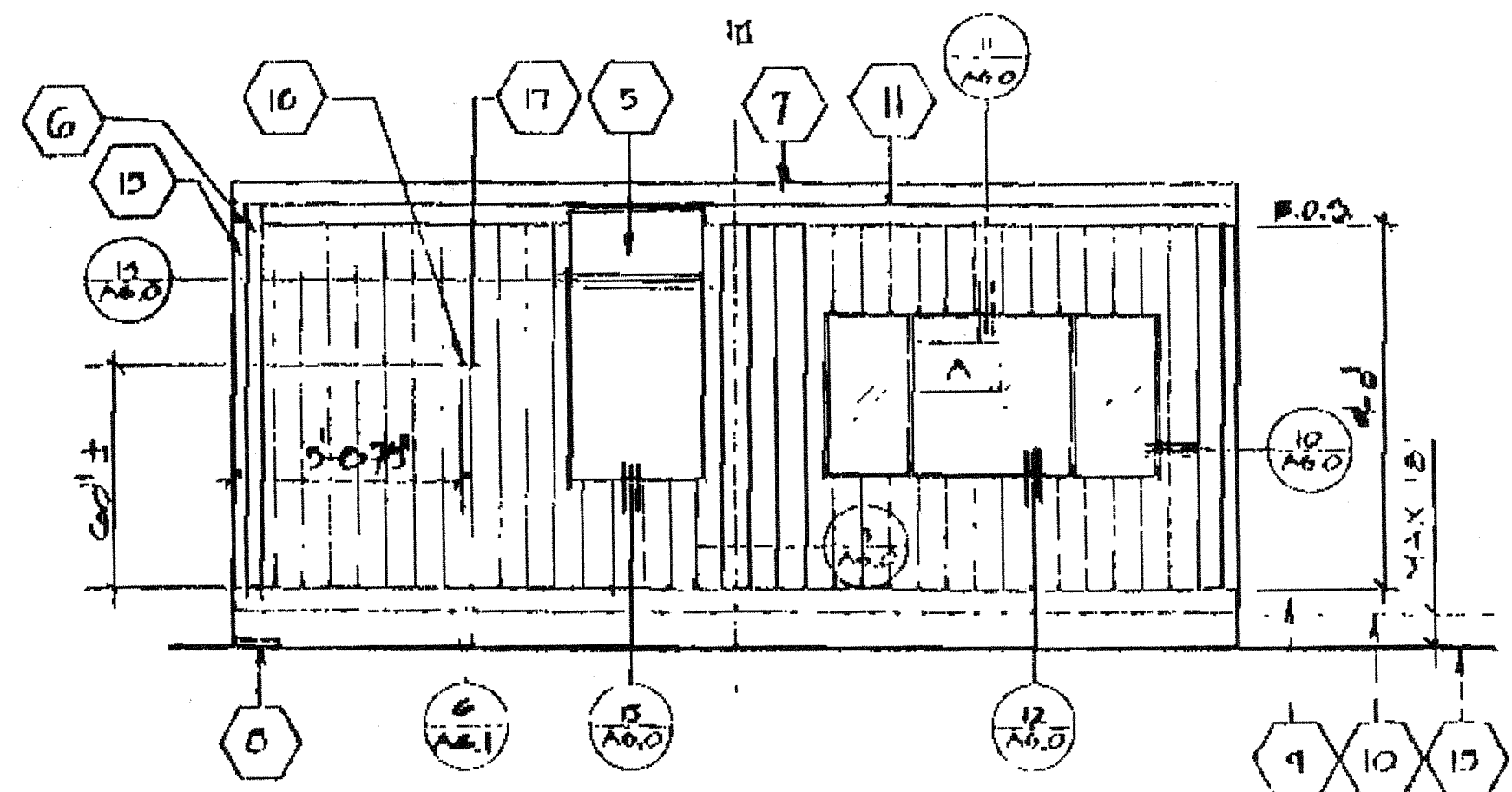
① FRONT ELEVATION

SCALE 1/4"=1'-0"



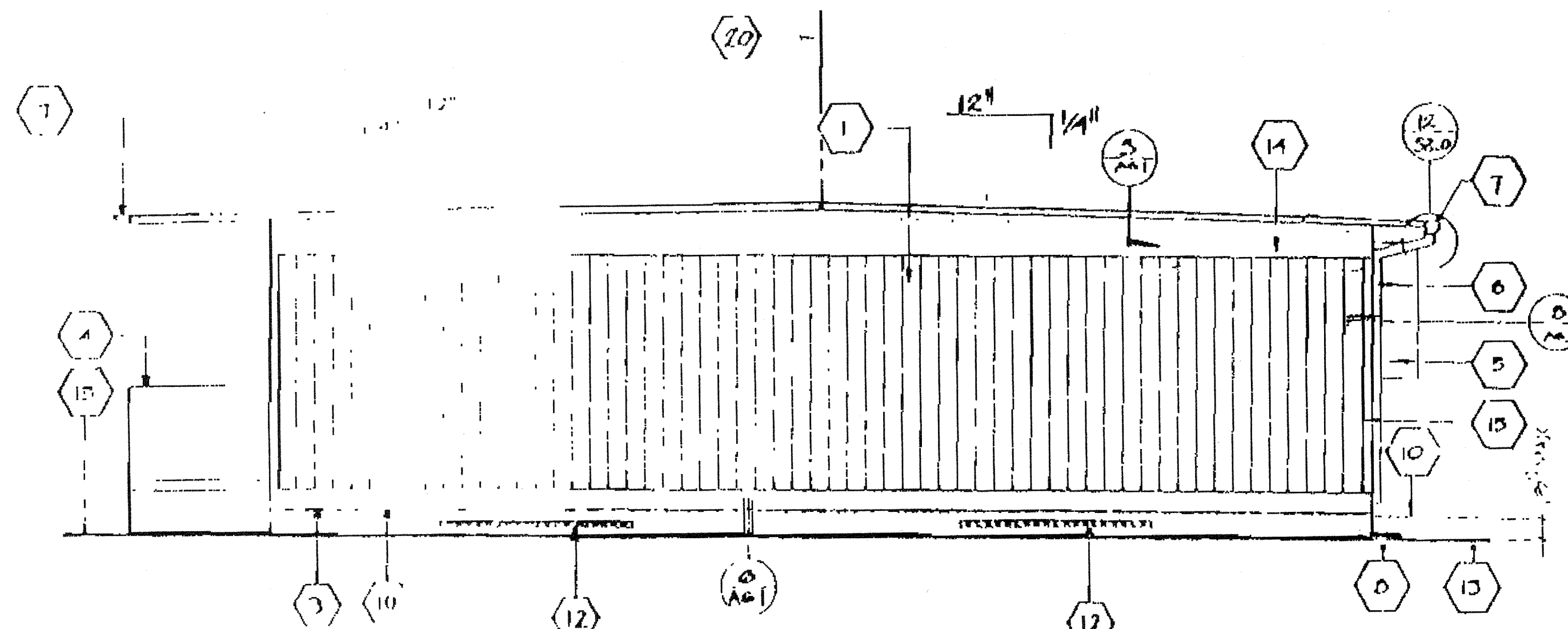
② SIDE ELEVATION

SCALE 1/4"=1'-0"



③ REAR ELEVATION

SCALE 1/4"=1'-0"



④ SIDE ELEVATION

SCALE 1/4"=1'-0"

NOTES:  
SEE FOUNDATION PLAN FOR  
SIZE & LOCATION OF VENTS.

"A" SHOWN  
"B" OPPOSITE

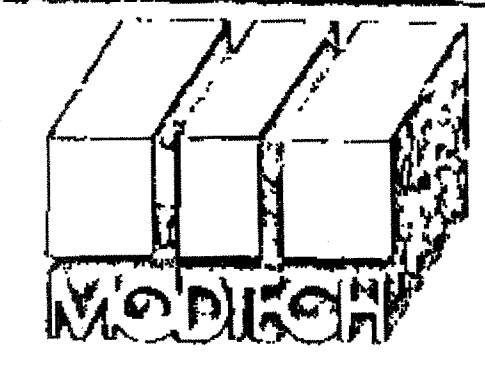
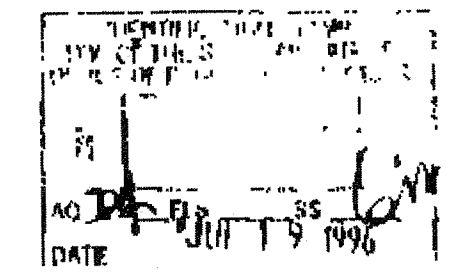
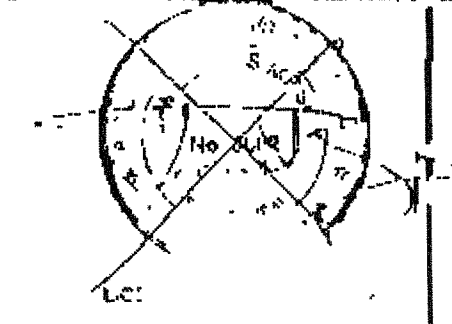
IDENTIFICATION STAMP  
DIV. OF THE STATE ARCHITECT

APP#3 117168

AC / FLS / SS TH  
Date AUG 04 2018



ARCHITECT	ELECTRICAL	STRUCTURAL	MECHANICAL	FIRE MARSHAL	ADDITIONAL COMPLIANCE	STRUCTURAL SAFETY
-----------	------------	------------	------------	--------------	-----------------------	-------------------



DRAWN BY  
DATE  
CHECKED BY  
DATE

24'X40' DUAL PITCH A3.0A