

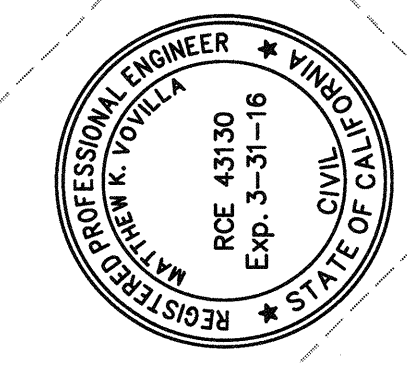
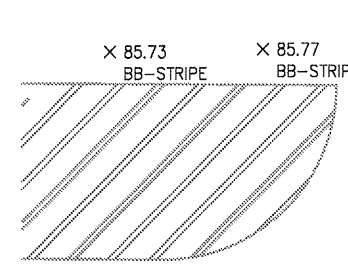
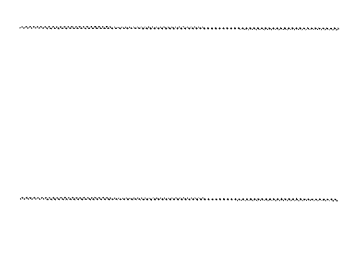
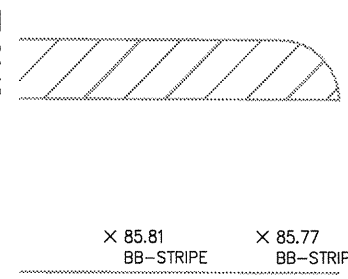
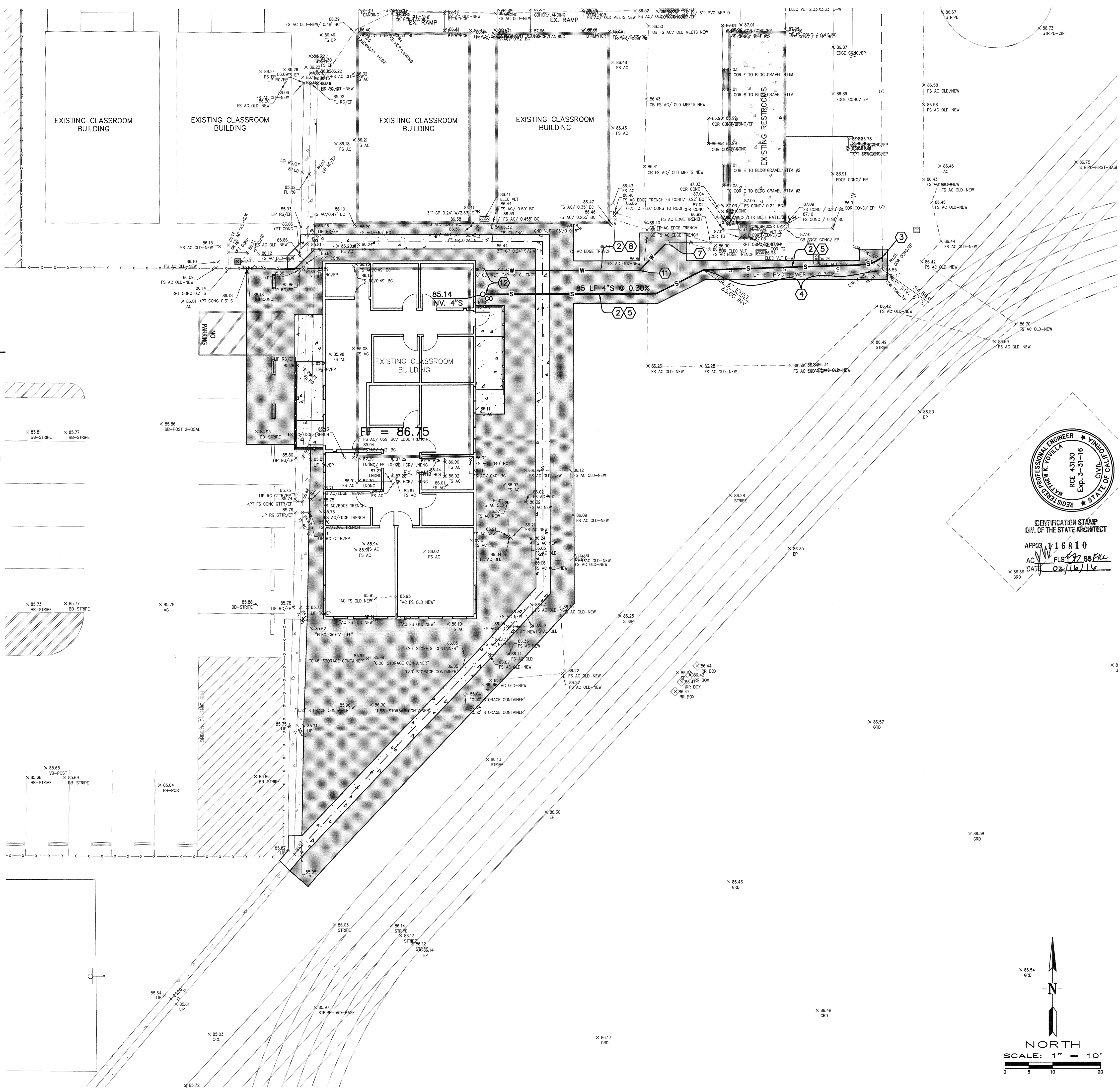
**LEGEND - UTILITY PLAN**

- S— PROPOSED SEWER
- Oco— PROPOSED SEWER CLEANOUT
- W— PROPOSED DOMESTIC PVC WATER LINE
- X— PROPOSED GATE VALVE AND VALVE BOX
- S— EXISTING SEWER LINE
- W— EXISTING WATER LINE
- CO CLEANOUT
- INV INVERT
- LF LINEAR FEET
- S SEWER
- SD STORM DRAIN
- TOG TOP OF GRATE
- W WATER
- WV WATER VALVE

\*\*SEE ALSO GRADING PLAN LEGEND - SHEET 7

**CONSTRUCTION NOTES - UTILITY PLAN:**

- 1) PRIOR TO COMMENCEMENT OF WORK, CONTRACTOR SHALL RESEARCH ALL UTILITIES AND POINTS OF CONNECTION. CONTRACTOR SHALL "POTHOLE" EXISTING UTILITIES AT ALL POINTS OF CONNECTION, AND AT OTHER LOCATIONS OF POTENTIAL CONFLICT. DEPTH AND LOCATION SHALL BE VERIFIED AND REPORTED TO THE ENGINEER. DISCREPANCIES WITH THE PLANS OR AS-BUILTS SHALL BE IMMEDIATELY REPORTED TO THE ENGINEER SUCH THAT ADJUSTMENTS CAN BE MADE PRIOR TO INSTALLATION.
- 2) ALL UTILITIES WITH LESS THAN 18-INCHES OF COVER SHALL BE ENCASED IN A CONCRETE SLURRY PER DETAIL 1.
- 3) FURNISH AND INSTALL SEWER WYE AND JOIN EXISTING SEWER LINE.
- 4) REMOVE EXISTING 6-INCH PVC SEWER AS NECESSARY FOR INSTALLATION OF NEW 4-INCH PVC SEWER.
- 5) FURNISH AND INSTALL 4-INCH PVC SEWER, SDR 35.
- 6) FURNISH AND INSTALL SEWER CLEAN-OUT WITH CONCRETE COLLAR PER CITY OF BAKERSFIELD STANDARD SW-5.
- 7) REMOVE EXISTING BLOW-OFF AND JOIN EXISTING WATER LINE. COORDINATE WITH DISTRICT FOR ACCEPTABLE TIMES TO SHUT OFF WATER SERVICE.
- 8) FURNISH AND INSTALL 2-INCH DOMESTIC WATER LINE. SEE DISTRICT'S PLUMBING STANDARDS.
- 9) INSTALL 2-INCH GATE VALVE AND VALVE BOX IN ACCORDANCE WITH DISTRICT STANDARDS.
- 10) FURNISH AND INSTALL 3/4-INCH SERVICE PER DISTRICT STANDARDS AND DETAIL 4. HEREIN, INSTALL SHALL INCLUDE HOSE BIB, BALL VALVE, AND CONCRETE THRUST BLOCKS.
- 11) INSTALL THRUST BLOCKS AT ALL WATERLINE ANGLE POINTS PER CITY OF BAKERSFIELD STANDARD W-2.
- 12) SEE BUILDING PLUMBING PLANS FOR SEWER AND WATER CONNECTIONS TO BUILDING.



IDENTIFICATION STAMP  
DIV. OF THE STATE ARCHITECT  
APP03 116810  
AC WFLS 12 SS FRC  
DATE 02/16/16

**LAV//Pinnacle Engineering**  
5401 Business Park South, Suite 204, Bakersfield, CA 93309  
Phone: (661) 869-0184 Fax: (661) 377-0076

DATE	02/01/16
REVISIONS	RCE 43130 EXP. 3/31/16
	MATTHEW K. NOVILLA

UTILITY PLAN  
FOR HEALTH CLINIC  
MCKINLEY ELEMENTARY SCHOOL  
604 4TH STREET  
BAKERSFIELD, CALIFORNIA



JOB No.:	15-677
DWG NO.:	BM01
DATE:	02/01/2016
DRAWN BY:	ADA
CHECKED BY:	MKY
SHEET	8
OF 8 SHEETS	

