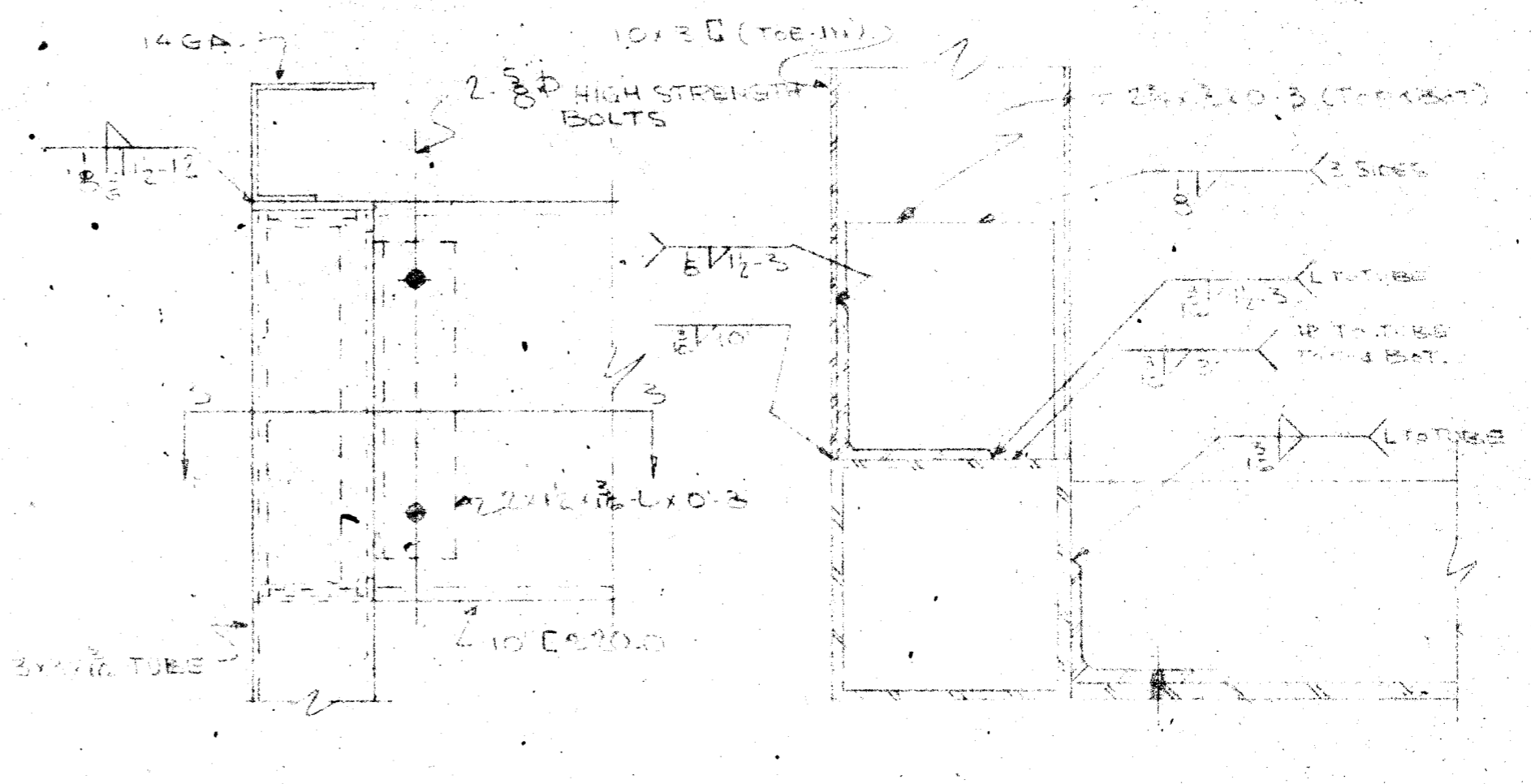
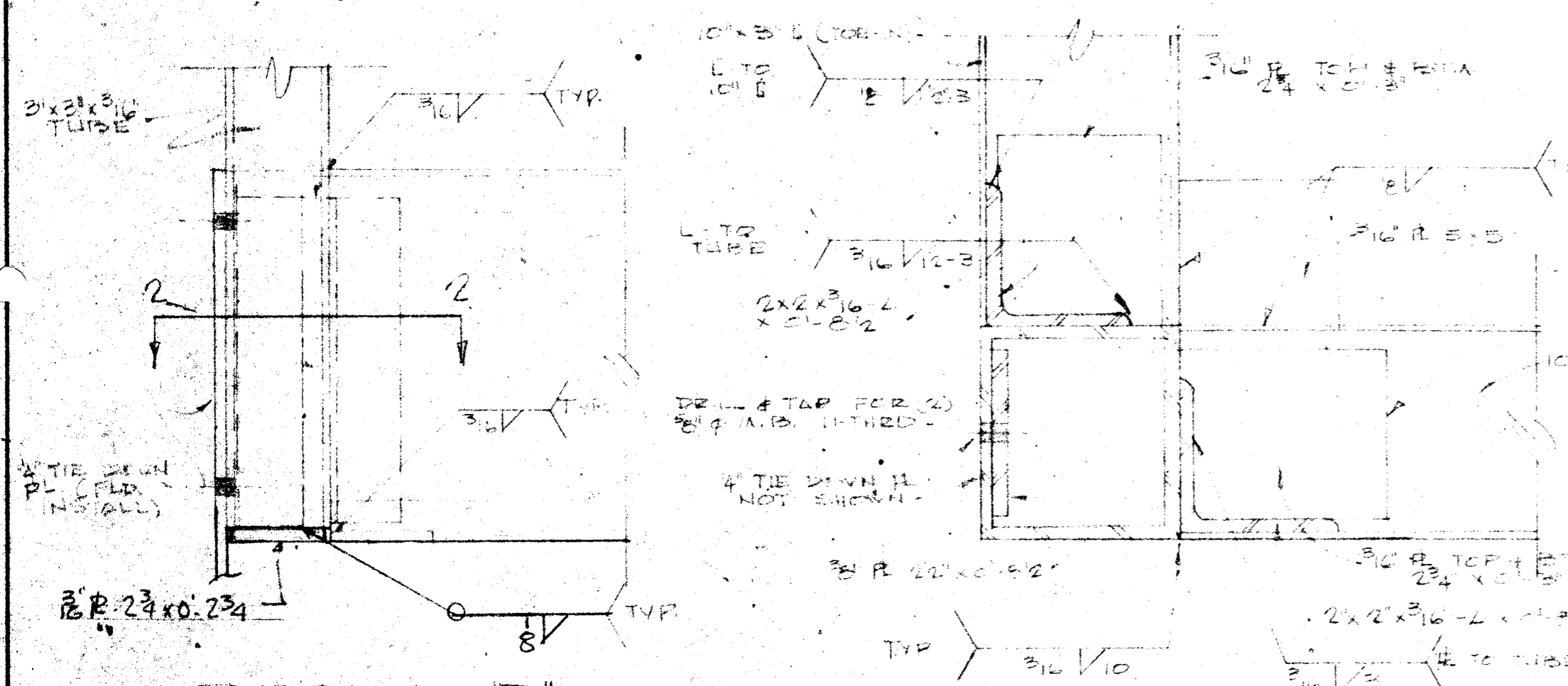


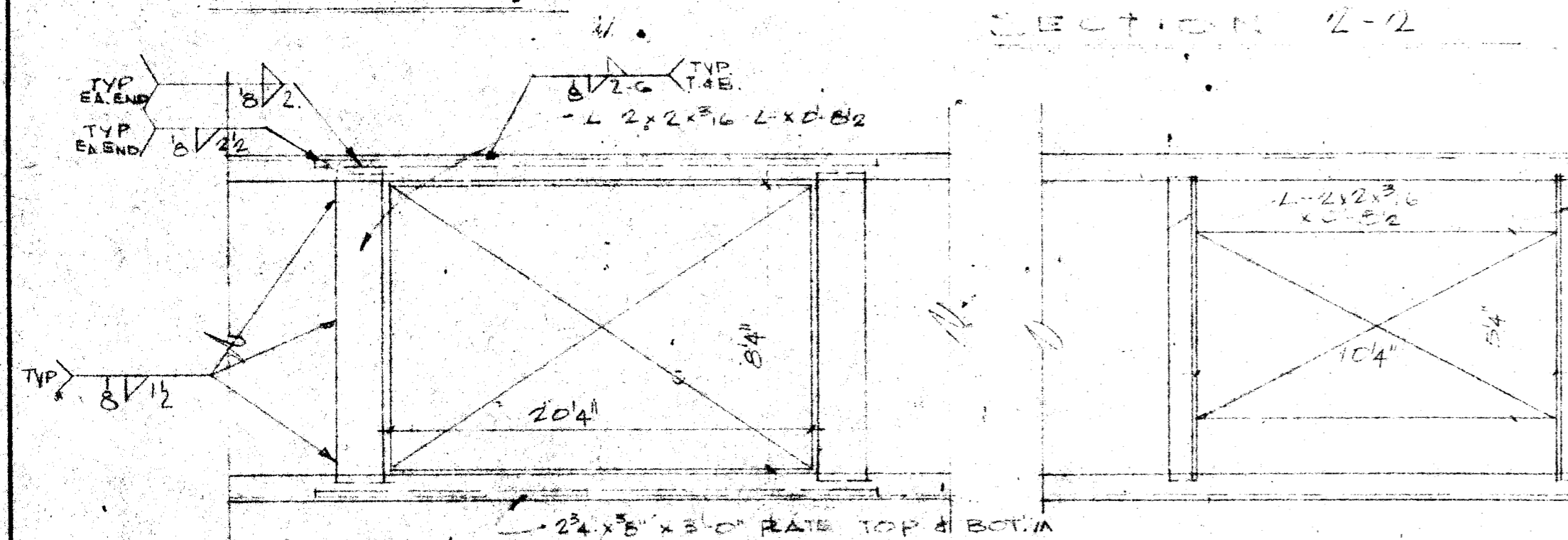
DETAIL C



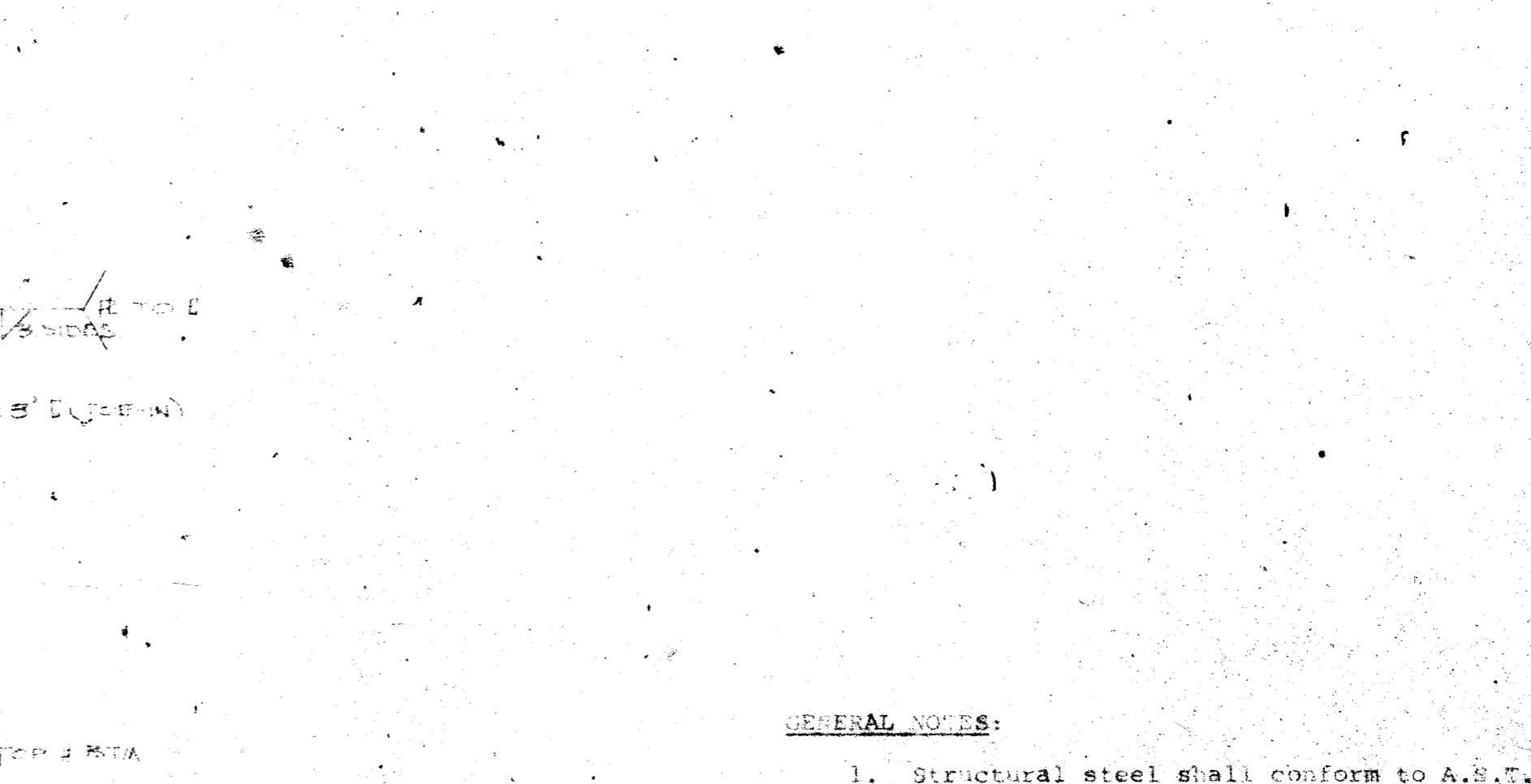
DETAIL E



SECTION 1-1



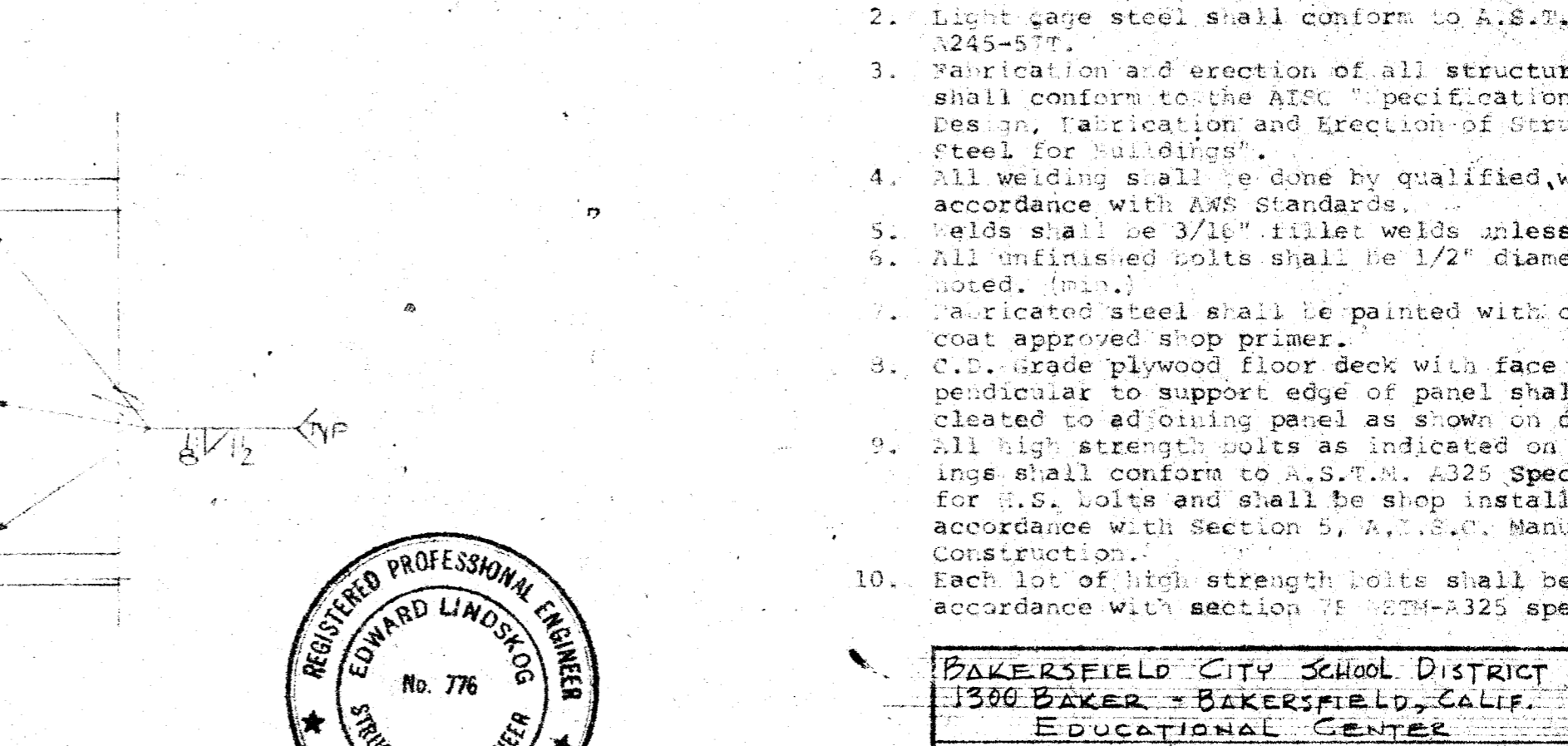
DETAIL D



SECTION 2-2



DETAIL G



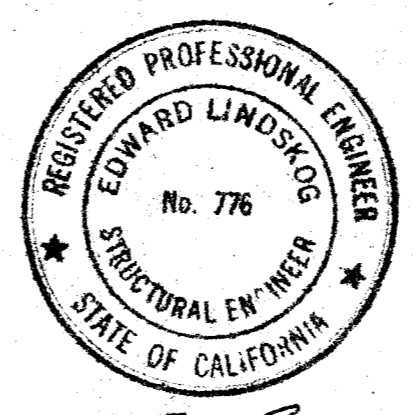
DETAIL F

GENERAL NOTES:

1. Structural steel shall conform to A.S.T.M. Spec. A36-GOT.
2. Light cage steel shall conform to A.S.T.M. Spec. A245-5TT.
3. Fabrication and erection of all structural steel shall conform to the AISC "Specifications for the Design, Fabrication and Erection of Structural Steel for Buildings".
4. All welding shall be done by qualified welders in accordance with AWS Standards.
5. Welds shall be 3/16" fillet welds unless noted. (min.)
6. All unfinished bolts shall be 1/2" diameter unless noted. (min.)
7. Fabricated steel shall be painted with one shop coat approved shop primer.
8. C.D. grade plywood floor deck with face grain perpendicular to support edge of panel shall be cleated to adjoining panel as shown on drawing.
9. All high strength bolts as indicated on the drawings shall conform to A.S.T.M. A325 Specification for U.S. bolts and shall be shop installed in strict accordance with Section 5, A.S.T.M. Manual of Steel Construction.
10. Each lot of high strength bolts shall be tested in accordance with section 75 ASTM-A325 specification.

APPROVED
STATE FIRE MARSHAL
STATE OF CALIFORNIA
DATE JUN 20 1966
BY *[Signature]*

STATE OF CALIFORNIA - DEPARTMENT OF GENERAL SERVICES
OFFICE OF ARCHITECTURE AND CONSTRUCTION
27755 APPROVED JUN 21 1966
APPLICATION FOR *[Signature]*



[Signature]

BAKERFIELD CITY SCHOOL DISTRICT 1300 BAKER - BAKERSFIELD, CALIF. EDUCATIONAL CENTER		JOB NO. 753
SCALE: 1/4" = 1'-0"	APPROVED BY: FOR 32'-0" UNIT	DRAWN BY: J. H. WILLIS
DATE: 5-9-66	MOBILE RENTALS CORPORATION 4242 NORTH GARDEN AND EL MONTE, CALIF.	REVISED
STRUCTURAL DETAILS		DRAWING NUMBER S-2