

CIRC. NO.	OUTLETS	WATTS		CIRC. BKR.		REMARKS
		A	B	Amp	Pole	
1	4	400		20	1	
2	8	1600				
3	6	600				
4	8	1600				
5						
6						
7						
8						
9	5	1200				
10						
11	6					
12						
13						
14						
15						
16						
17						
18						
19						
20						
21						
22						
23						
24						
25						
26						
27						
28						
29						
30						

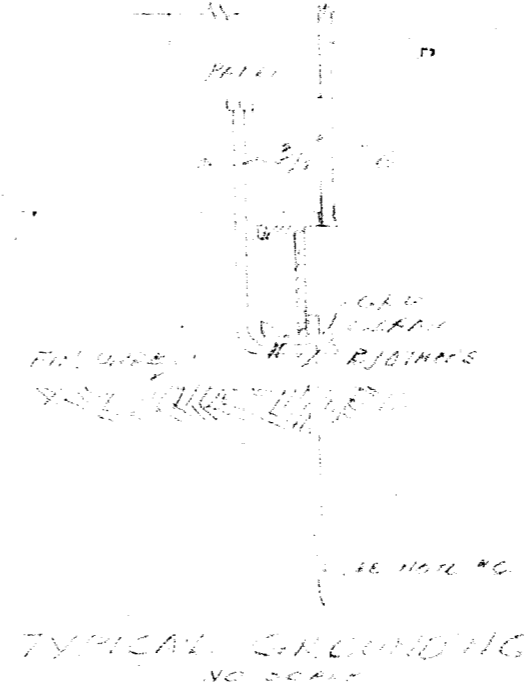
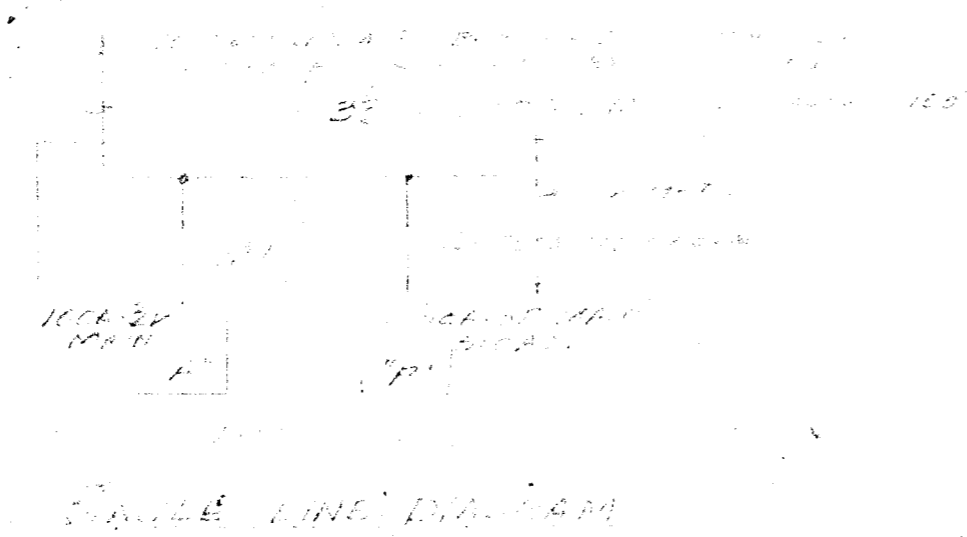
5000 2000 2500

CIRC. NO.	OUTLETS	WATTS		CIRC. BKR.		REMARKS
		A	B	Amp	Pole	
1		3800		40	2	
2		3800		40	2	
3		3800				
4		3800				
5				40	2	
6				40	2	
7						
8						
9				40	2	
10				40	2	
11						
12						
13				40	2	
14				40	2	
15						
16						
17				40	2	
18				40	2	
19						
20						
21				40	2	
22				40	2	
23						
24						
25				40	2	
26				40	2	
27						
28						
29						
30						

5000 2000 2500

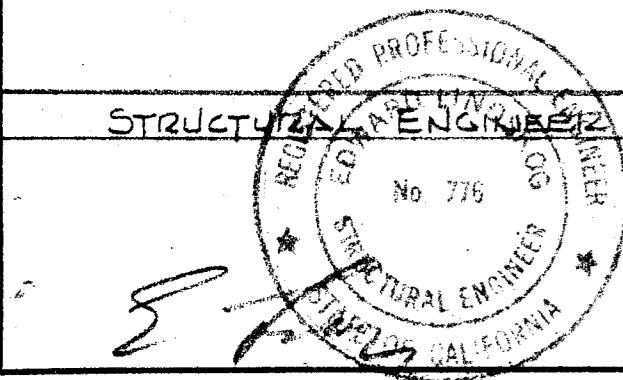
SYMBOLS

- CONCEALED IN WALL OR CEILING
- - - CONCEALED IN FLOOR SLAB OR BELOW GRADE
- RUN EXPOSED
- SIZE, WIRE SIZE & NO. OF CONDUCTORS; IF NO NOTATION RUN IS 1/2" C. - 2 #12
- HOME RUN TO PANEL "A" CIRCUITS 1 & 3.
- CONDUIT TURNING UP
- CONDUIT TURNING DOWN
- PANELBOARD FLUSH MOUNTED
- PANELBOARD SURFACE MOUNTED
- TELEPHONE CABINET FLUSH MOUNTED
- FLUORESCENT FIXTURES & OUTLET SURFACE MOUNTED, OF T-EM HUNG
- FLUORESCENT FIXTURES & OUTLET, RECESSED
- INCANDESCENT FIXTURE & OUTLET CEILING OR STEM MOUNTED
- INCANDESCENT FIXTURE & OUTLET WALL MOUNTED
- NOTE: LETTER AT FIXTURE SYMBOL INDICATES TYPE, NUMBERS BESIDE SYMBOL INDICATES FIXTURE WATTAGE & CIRCUIT NO.; a INDICATES SWITCH CONTROL
- S SINGLE POLE LIGHT SWITCH
- S3 THREE WAY LIGHT SWITCH
- SK KEY OPERATED SWITCH
- P PILOT LIGHT
- ST. MANUAL MOTOR STARTING SWITCH WITH THERMAL O.L. PROTECTION
- DUPLEX CONVENIENCE OUTLET
- FLOOR OUTLET POWER
- FLOOR OUTLET TELEPHONE
- TELEPHONE OUTLET WALL MOUNTED
- CLOCK OUTLET, WALL MOUNTED



- NOTES:
- BRANCH CIRCUIT WIRING SHALL BE NON-METALLIC SHEATHED CABLE WITH GROUNDING CONDUCTORS, UNLESS NOTED OTHERWISE.
 - 1/2" INDICATES MOUNTING HEIGHT FROM FLOOR TO CENTER LINE OF OUTLET.
 - MINIMUM WIRE SIZE SHALL BE #12 AWG.
 - PROVIDE GROUNDING STRAP FLEXIBLE COPPER BRAID EQUAL TO NO. 2 WIRE WITH BRASS BOLTS & NUTS.
 - SEE LOCATIONS OF BOARDS, BASH, LIGHTING FIXTURES, A/C UNITS, SEE ARCH. DRAWG.
 - GROUNDING IS FURNISHED BY OTHERS. DETAIL IS SUGGESTED ONLY. REFER TO LOCAL GOVERNING CODES.
 - ALL JUNCTION BOXES SHALL BE 9/8 AND SHALL BE ACCESSIBLE.

TYPE	MANUFACTURER	CATALOG NO.	MOUNTING				LAMPS			REMARKS
			Surface	Recessed	Wall	Pendent	No.	Watts	Type	
A	LOG-ELECTRIC	#1101 LOK-2-A-4	•				2	40	T12 40 WATTS	2 x 4
B	LOG-ELECTRIC	#1101 LOK-2-9-6	•				4	40	"	2-2' x 4 (TANDEM)
C	INTELLIGENT	487			•			100	"	
D										
E										
F										



FIRE MARSHAL APPROVED
STATE FIRE MARSHAL
STATE OF CALIFORNIA
DATE JUN 20 1966

DIVISION OF ARCHITECTURE
STATE OF CALIFORNIA - DEPARTMENT OF GENERAL SERVICES
OFFICE OF ARCHITECTURE AND CONSTRUCTION
27755 APPROVED JUN 20 1966

ELECTRICAL ENGINEER

OWNER

BAKERSFIELD CITY SCHOOL DISTRICT
1500 BAKER - BAKERSFIELD, CALIF.
EDUCATION CENTER

Job No. **753**

SCALE: ~ APPROVED BY: _____
DATE: MAY 9, 1966

MOBILE RENTALS CORPORATION
1240 NORTH DUNFEE AVE. EL MONTE, CALIF.

SYMBOLS, SCHEDULES & DETAILS DRAWING NUMBER: **E-3**