



LETTER OF TRANSMITTAL

DATE: 07/15/2025

TO: Manuel Maldonado

ATTENTION: Manuel Maldonado

Architect / Principal
Ordiz-Melby Architects
5500 Ming Ave. Unit 280, Bakersfield CA. 93309

RE: Storm Drain

JOB NO: 2037

WE ARE SENDING YOU:

- | | | | |
|--|---------------------------------------|--------------------------------|--|
| <input checked="" type="checkbox"/> Attached | <input type="checkbox"/> Mailed | <input type="checkbox"/> Faxed | <input type="checkbox"/> Hand Delivered |
| <input type="checkbox"/> Shop Drawings | <input type="checkbox"/> Prints | <input type="checkbox"/> Plans | <input type="checkbox"/> Samples |
| <input type="checkbox"/> Copy of Letter | <input type="checkbox"/> Change Order | <input type="checkbox"/> Other | <input checked="" type="checkbox"/> Specifications |

COPIES	DATE	NO.	DESCRIPTION
1	7/15/2025	4	Storm Drain

THESE ARE TRANSMITTED as checked below:

- | | |
|--|---|
| <input checked="" type="checkbox"/> For Approval & Execution | <input type="checkbox"/> Approved as Submitted |
| <input type="checkbox"/> For Your Use | <input type="checkbox"/> Approved as Noted |
| <input type="checkbox"/> As Requested | <input type="checkbox"/> Returned for Corrections |
| <input type="checkbox"/> For Review & Comment | <input type="checkbox"/> Other: _____ |
| <input type="checkbox"/> FOR BIDS DUE: _____ | |

Afinar
Civil Engineers / Surveyors / Planners / Construction Managers
214 Bernard Street, Bakersfield, CA 93305
Phone (661) 716-7443

- | | |
|---|--|
| No Exceptions Taken <input checked="" type="checkbox"/> | Make Correction Noted <input type="checkbox"/> |
| Rejected <input type="checkbox"/> | Revise and Resubmit <input type="checkbox"/> |
| No Action Required <input type="checkbox"/> | Intermediate Submittal Required <input type="checkbox"/> |

Checking is only for general conformance with the design concept of the project and general compliance with the information given in the Contract Documents. Any action shown is subject to requirements of the plans and specifications. Contractor is responsible for dimensions which shall be confirmed and correlated at the jobsite: fabrication, process and techniques of construction: coordination with all other trades and satisfactory performance of their work. See attached Submittal Checklist for comments.

REMARKS: _____

X *BOS*

8-4-25

COPY TO: _____ SIGNED: Jesse Baeza, Project Manager
Your Name, Title

Submittal Documents: Fletcher Elementary School Site Work



Overview

Bid Date:06-05-2025

Bid Number:4218739

☐ Approved as Submitted
☐ Approved as Noted
☐ Returned for Corrections
☐ Rejected

Customer

SWCONSTRUCTION
5303 WOODMERE DR
BAKERSFIELD CA 93313

Contact
Nicholas

Contact

Sales Representative
Sean McAllister
Sean.McAllister@coreandmain.com
(T): 661-658-6064

Core & Main
4920 Lisa Marie Ct
Bakersfield CA 93313
(T): 6618341162

GravitySewer

NON-PRESSURE-RATED PVC PIPE



ASTM D3034 / F679

CSA B182.2

ASTM D1784 Cell Class 12454/12364

Gaskets: ASTM F477

Joints: ASTM D3212



DELIVERING GOOD WATER TO YOU

MARKETS



Sewer

DESCRIPTION



GRAVITYSEWER

Ring-Tite Joint

- Flexible elastomeric Rieber® locked-in gasket provides a tight seal that protects and compensates for expansion, contraction, vibration or other movements.
- Quick and easy to assemble with a simple push, there's no field mixing or application of cement.
- Meets or exceeds ASTM D3219 for joint tightness, including a 22-inch Hg vacuum and a 25-foot head pressure test.

Nominal Laying Length: 14/20 feet
(Laying length tolerances are in accordance with ASTM and CSA standards)

Color: ■ Green

ASTM D3034 TYPE PSM SIZES:

4", 6", 8", 10", 12", 15"

ASTM F679 SIZES:

18", 21", 24", 27", 30", 36", 42", 48"

Rieber® sealing ring provides tight, flexible seal.

Spigot pipe ends are supplied from the factory with bevels.

The bell is an integral part of the pipe length with the same strength.

CSA B182.2

SDR 35 (PS 46)

ASTM D3034

SDR 35 (PS 46)

SDR 26 (PS 115)

ASTM F679

PS 46

PS 115

BENEFITS

INSTALLATION

Lightweight, great for manual installation.

Field-cut with a power saw or handsaw; bevel without complicated machinery.

Does not need lining, wrapping, coating, or cathodic protection to prevent galvanic corrosion.

FEATURES

Unaffected by corrosive elements, sewer gas, sulfuric acid, alkaline, or acidic soils.

Resistance to abrasion, gouging and scouring.

Made in America

GravitySewer

NON-PRESSURE RATED PVC PIPE



DELIVERING GOOD WATER TO YOU

SUBMITTAL AND DATA SHEET

ASTM D3034 TYPE PSM GRAVITY SEWER PIPE

PIPE SIZE (IN)	AVG. O.D. (IN)	NOM. I.D. (IN)	MIN. T. (IN)	AVG. E. (IN)	APX. D ⁹ (IN)	APX. WGT (LBS/FT)
SDR 35						
PIPE STIFFNESS: 46 psi						
4	4.215	3.975	0.120	3.75	4.695	1.05
6	6.275	5.915	0.180	2.37	6.995	2.36
8	8.400	7.920	0.240	5.00	9.360	4.24
10	10.500	9.900	0.300	6.25	11.700	6.64
12	12.500	11.780	0.360	6.50	13.940	9.50
15	15.300	14.426	0.437	7.50	17.048	14.19
SDR 26						
PIPE STIFFNESS: 115 psi						
4	4.215	3.891	0.162	3.75	4.863	1.40
6	6.275	5.793	0.241	2.37	7.239	3.11
8	8.400	7.754	0.323	5.00	9.692	5.63
10	10.500	9.692	0.404	6.25	12.116	8.84
12	12.500	11.538	0.481	6.50	14.424	12.56
15	15.300	14.124	0.588	7.50	17.652	18.90

Product Standard:

ASTM D3034 Type PSM (4"-15")

ASTM F679 (18" - 48")

CSA B182.2 (PS46, 4" - 21")

Pipe Compound: ASTM D1784 Cell Class 12454/12364

Gasket: ASTM F477

Integral Bell Joint: ASTM D3212

Nominal Laying Length: 14/20 feet

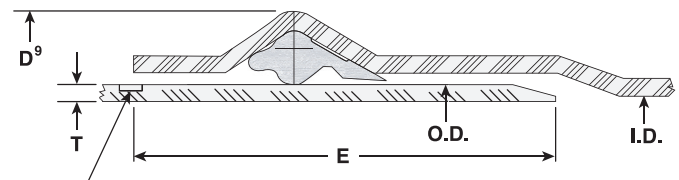
(Laying length tolerances are in accordance with ASTM and/or CSA standards.)

Installation: JM Eagle™ Gravity Sewer Installation Guide.

Manning Coefficient (n) = 0.009

Hazen-Williams Coefficient (c) = 150

*Please call prior to order regarding availability.



Assembly Mark

I.D.: Inside Diameter

O.D.: Outside Diameter

T.: Minimum Wall Thickness

D⁹: Bell Outside Diameter

E: Distance between Assembly Mark and the end of the spigot.

ASTM F679 GRAVITY SEWER PIPE

PIPE SIZE (IN)	AVG. O.D. (IN)	NOM. I.D. (IN)	MIN. T. (IN)	AVG. E. (IN)	APX. D ⁹ (IN)	APX. WGT (LBS/FT)
PIPE STIFFNESS: 46 psi						
18	18.701	17.564	0.536	7.37	20.845	21.43
21	22.047	20.707	0.632	8.25	24.575	29.88
24	24.803	23.295	0.711	9.12	27.647	38.96
27	27.953	26.254	0.801	10.00	31.157	49.47
30 CIOD	32.000	30.055	0.917	12.75	35.612	64.18
36 CIOD	38.300	35.972	1.098	13.87	42.816	93.00
42 CIOD	44.500	41.794	1.276	15.75	49.604	128.83
48 CIOD	50.800	47.713	1.456	16.62	56.624	168.31
PIPE STIFFNESS: 115 psi						
18	18.701	17.174	0.720	7.37	21.581	28.49
21	22.047	20.247	0.849	8.25	25.443	39.83
24	24.803	22.776	0.956	9.12	28.627	50.74
27	27.953	25.669	1.077	10.00	32.261	64.78
30 CIOD	32.000	29.386	1.233	12.75	36.348	86.55
36 CIOD	38.300	35.173	1.475	13.87	45.438	125.35
42 CIOD	44.500	40.866	1.714	15.75	51.356	171.30
48 CIOD	50.800	46.651	1.957	16.62	58.628	223.92



Flexible Tap Saddles

The faster & less costly way to make sewer main connections

One **Fernco** Saddle will fit
ALL 6" and larger sewer mains.

- Manufactured from a specially formulated high durometer PVC.
- Rigid, yet flexible enough for sewer mains:
 - 4" saddles fit 6" pipe and larger
 - 6" saddles fit 8" pipe and larger
- Includes special "slip-lock" clamps of 300 series stainless steel that make for fast and simple installations on any type of pipe from 6" to 15".
- Larger apron with locating ring fits 5" or 7" standard shell cutters.
- Large band grooves

TST-4



TSW-4

Available for all **4" or 6"** plastic or cast iron drain pipe inlets in **Tee or Wye** configurations.

PART #	Description
TST-4	4" Cast Iron or Plastic Inlet - Tee Tap Saddle
TST-6	6" Cast Iron or Plastic Inlet - Tee Tap Saddle
TSW-4	4" Cast Iron or Plastic Inlet - Wye Tap Saddle
TSW-6	6" Cast Iron or Plastic Inlet - Wye Tap Saddle
312-300	Extension Clamps - For larger than 15" sewer mains
TSPK-46	Tap Saddle Pressure Kit - For a water tight seal





TRENCH TOUGH PLUS™

SDR35 Gasketed Sewer Fittings

APPLICATIONS:

- Gravity Sewer Systems
- Stormwater and Drainage

SIZE RANGE:

Molded: 4" – 18" Fabricated: 18" – 60"

FEATURES:

- The widest size range of molded fittings (up to 18" diameter) available in the industry.
- Locked in gaskets on molded fittings.
- Third party certified joints to withstand a minimum of 15 psi hydrostatic pressure and a -10.8 psi vacuum.
- Molded fittings are structurally reinforced to a heavier wall thickness at key areas to ensure maximum durability during installation and for the long term.
- Unsurpassed strength while maintaining flexibility and toughness.
- Proven track record of performance for over 60 years.

STANDARDS:



CSA B182.2: PSM type Polyvinyl Chloride (PVC) sewer pipe and fittings



ASTM F1336: Standard Specification for Polyvinyl Chloride (PVC) Gasketed Sewer Fittings
ASTM D3034: Type PSM Polyvinyl Chloride (PVC) Sewer Pipe and Fittings



NQ 3624-135: Unplasticized Polyvinyl Chloride (PVC-U) Pipe and Fittings
— Pipes of 200mm to 600mm in Diameter for Underground Sewage and Soil Drainage

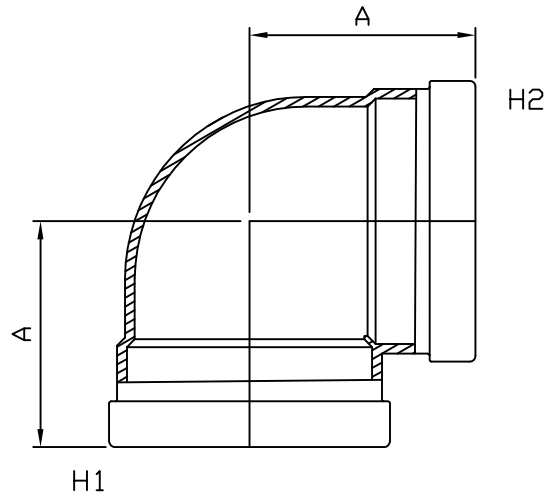


MULTI FITTINGS

LAYING LENGTH

ISSUE DATE: MAR 11/05
SUPERCEDES: OCT 31/00

90° SHORT ELBOW (GxG) (1/4 BEND)

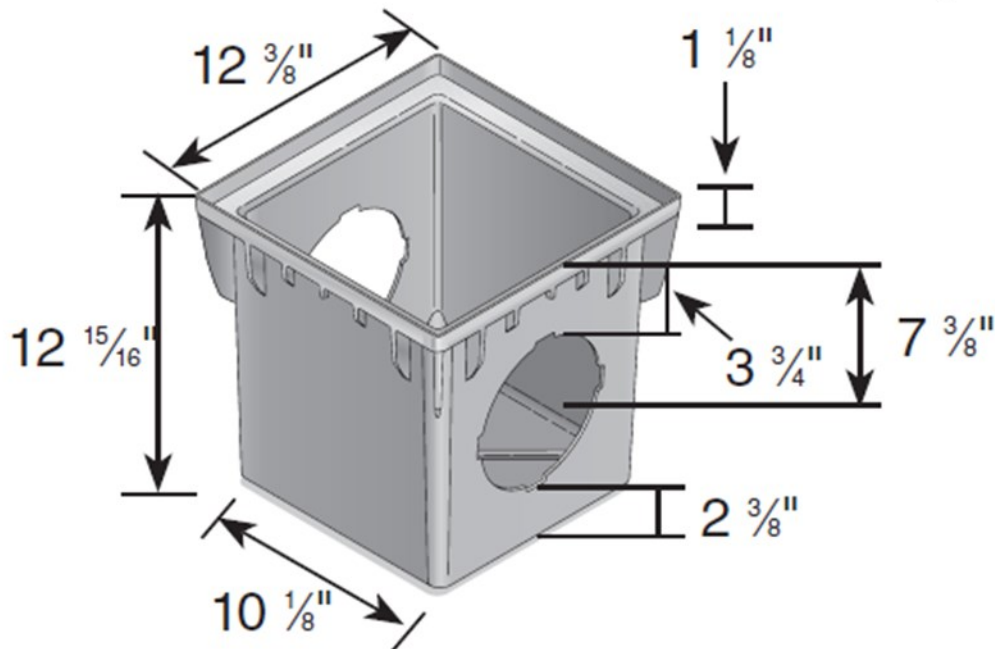


INJECTION MOLDED FITTING (M)

	SIZE H1xH2	PART NUMBER	REFERENCE NUMBER	A REF	
	4x4	043235	-	-	P
M =	6x6	063216	480566	6.125	084
M =	8x8	063217	480582	7.750	084
M =	10x10	063218	480517	9.375	084
M =	12x12	043219	480525	10.750	084

Note: = Refer to Page G4 for Hub Detail, Type A
Refer to Page G4-1 for Hub Detail, Type B

12" x 12" CATCH BASIN



- 1200BLKIT- Catch basin with 2 openings
- 1200- Catch basin with two openings
- 1203- Catch basin with 3 openings
- 1204- Catch basin with 4 openings

Material: Polypropylene

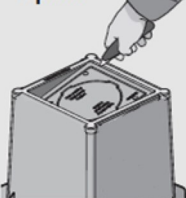
Colors: Black (1200BLKIT, 1200, 1203, 1204)

Fits: Requires either part # 1206, #1242, # 1243, #1245, #1266, or # 1889 Universal Outlet for each opening.

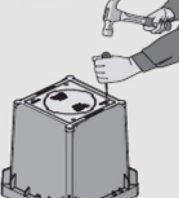
Bottom cutout may be used for additional outlet.

Features to Eliminate Standing Water

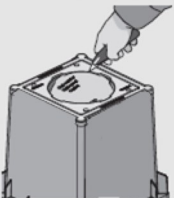
No bottom
Option



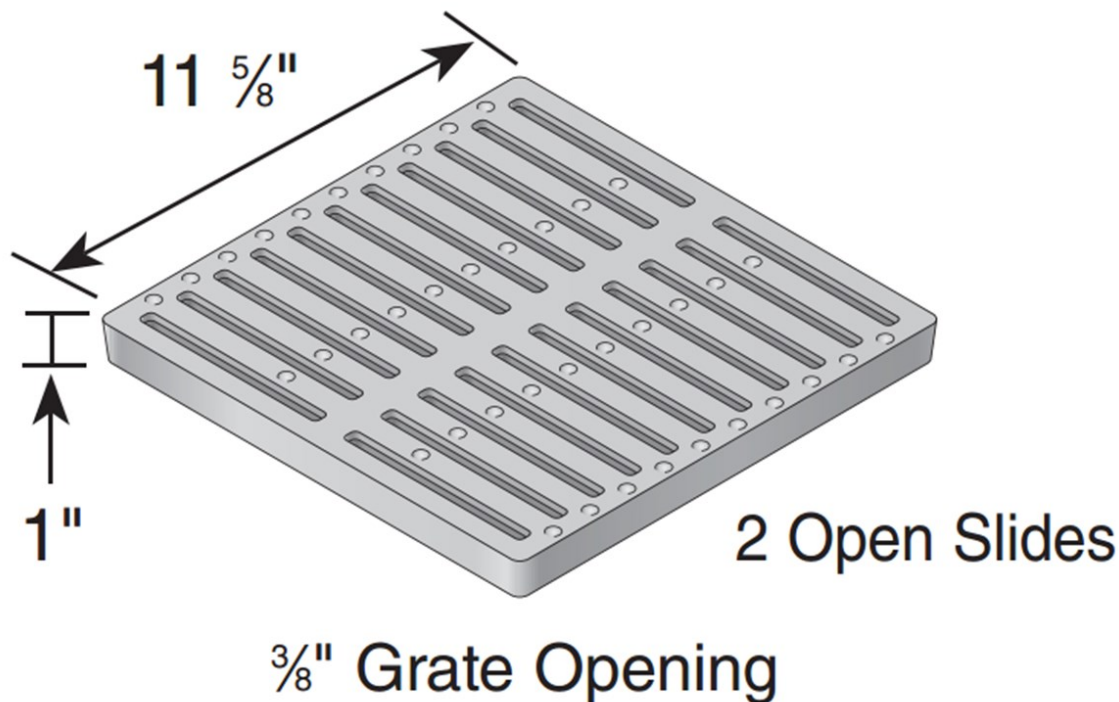
1/2" Drain
Holes



Cut out for
Universal Outlet



12" x 12" SQUARE CAST IRON GRATE



Material: Cast Iron

Weight: 15.30 lbs

Colors: Black (1213)

Fits: Use with 12" catch basin series

Grate Openings: 37.2 in² open space

Will accommodate: 113.80 gallons per minute
with 1/2" of head.

Load Recommendation Guide



Class C

- Loads of 176-325 psi.
- Recommended for heavy-duty pneumatic tire forklifts and tractor trailers at speeds less than 20 m.p.h., H-20 rated.

Note: Some installations may require a concrete collar to meet load rating. Loads are based on encasing product in concrete. Product must be installed using NDS instructions.

ADA Compliance

NDS provides a wide selection of grates that are compliant with the Americans with Disabilities Act. The ADA Accessibility Guidelines For Buildings and Facilities Section 4.5.4 specifies that ground and floor grates "shall have spaces no greater than 1/2 in (13 mm) wide in one direction."

We are pleased to provide grates that comply with these requirements, so that no individual need be limited from accessing the area safely and confidently.

To see if a grate is ADA compliant, please check the description of the product in our [NDS Drainage Catalog](#): products that meet these requirements are marked "ADA compliant."

Like to find out more about ADA compliance and NDS? Send us your question and we'd be happy to help.

