



01-1451

**Date:** 08/25/2025

**Submittal No:** 10

**Project:** Fletcher ES Mod. Classroom Building  
BP# 02 Building & Site Concrete  
9801 Highland Knolls Dr.  
Bakersfield, CA 93306

**Owner:** Bakersfield City School District  
1300 Baker St.  
Bakersfield, CA 93305

**Architect:** Ordiz Melby Architects, Inc.  
5500 Ming Ave. Ste. 280  
Bakersfield, CA 93309

**Contractor:** JTS Construction  
P.O. Box 41765  
Bakersfield, CA 93384-1765

**Subcontractor:** N/A

**Submittal:** Weld Plates / Embeds

**Contractor's Stamp**  
JTS CONSTRUCTION  
BY: Omar Cabral  
DATE: 08/25/2025  
REVIEWED/RESUBMIT

**Architect's Stamp**

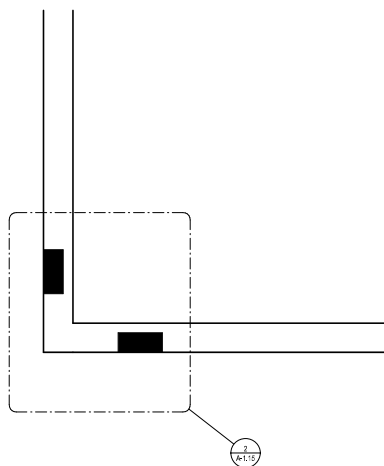
- ☒ Reviewed, no exceptions noted  
☐ Reviewed, exceptions noted  
☐ Rejected

Reviewed only for general compliance with the design concept and general compliance with the information given in the contract documents. Any action shown is subject to the requirements of the plans and specifications. Contractor's responsibility includes, but is not limited to: dimensions which shall be confirmed and correlated by Contractor at the job site; fabrication processes and techniques of construction; coordination of his work with that of all other trades and satisfactory performance of his work.

ORION ENGINEERING

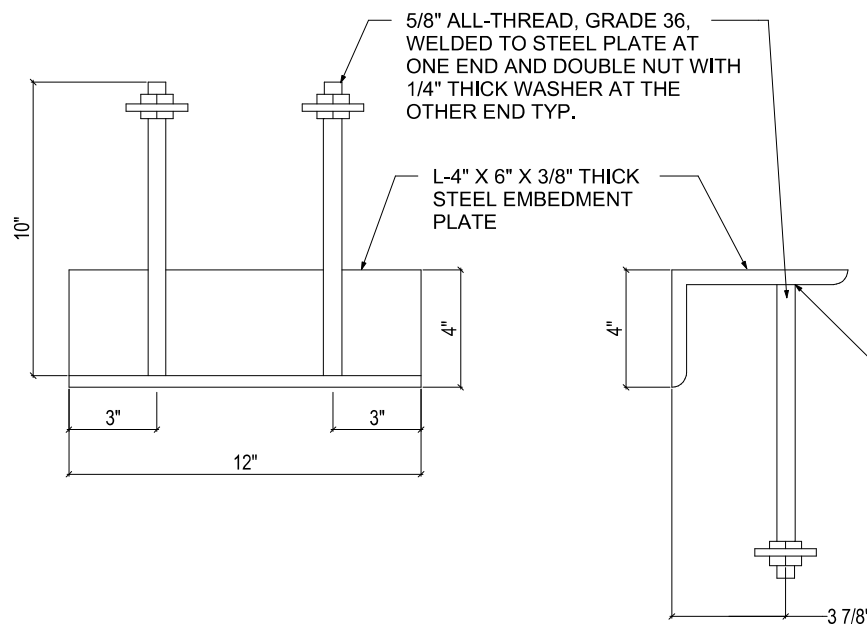
Date: 9/2/25 By: R.U.

- ☐ Resubmittal required  
☒ Resubmittal NOT required



**ENLARGED - TYP AT CORNERS**  
**COUNT-8**

① 1" = 1'-0"

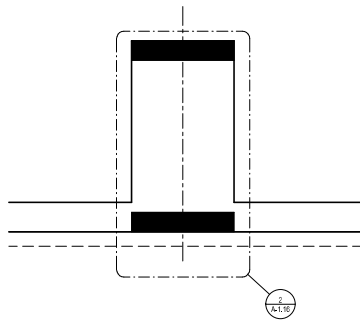


**ANCHOR PLATE AT CORNERS**

② 6" = 1'-0"

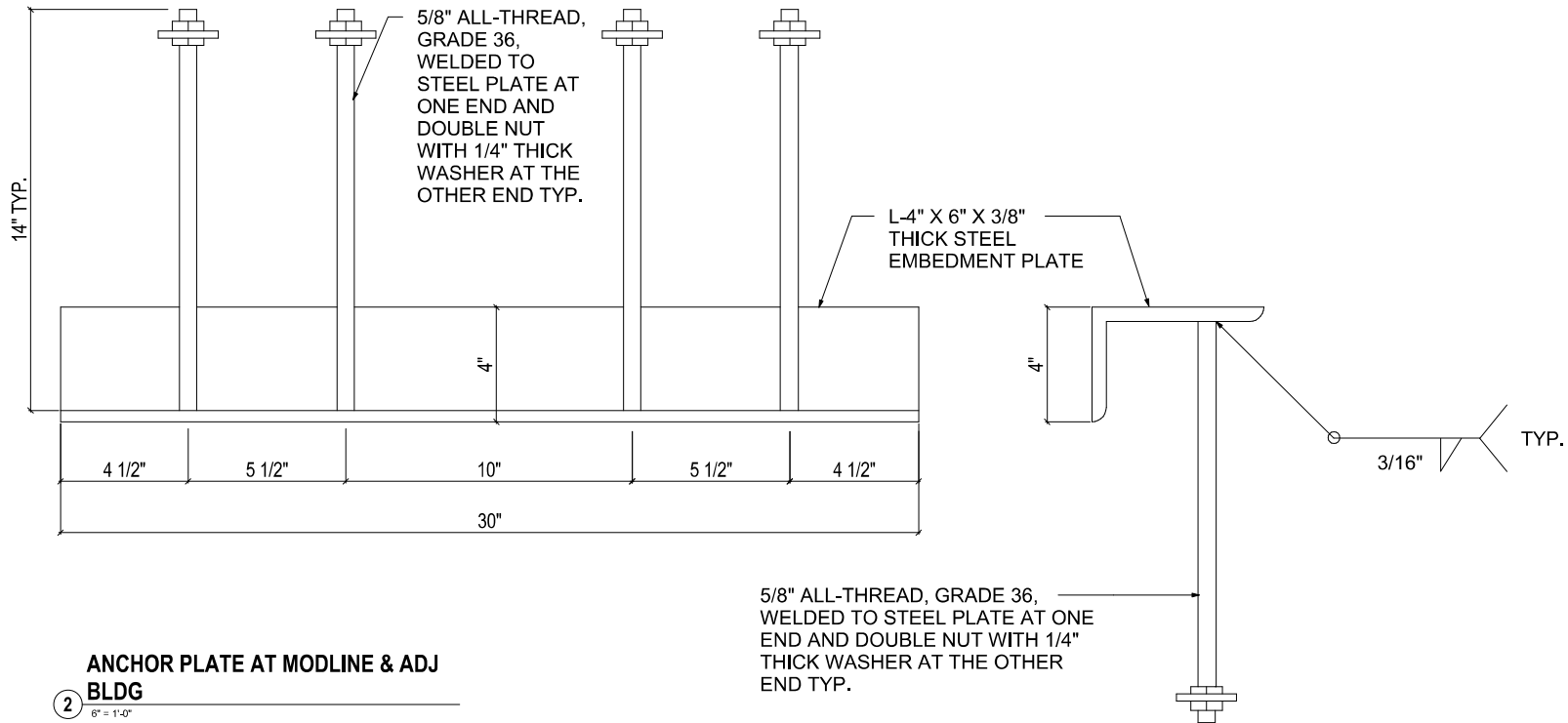
PLOT DATE:





**ENLARGED - TYP AT MODLINES  
COUNT-52**

1  
1" = 1'-0"

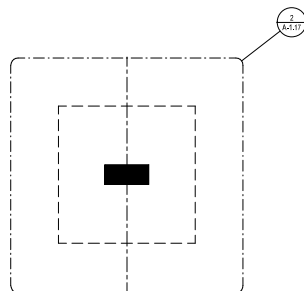


**ANCHOR PLATE AT MODLINE & ADJ  
BLDG**

2  
6" = 1'-0"

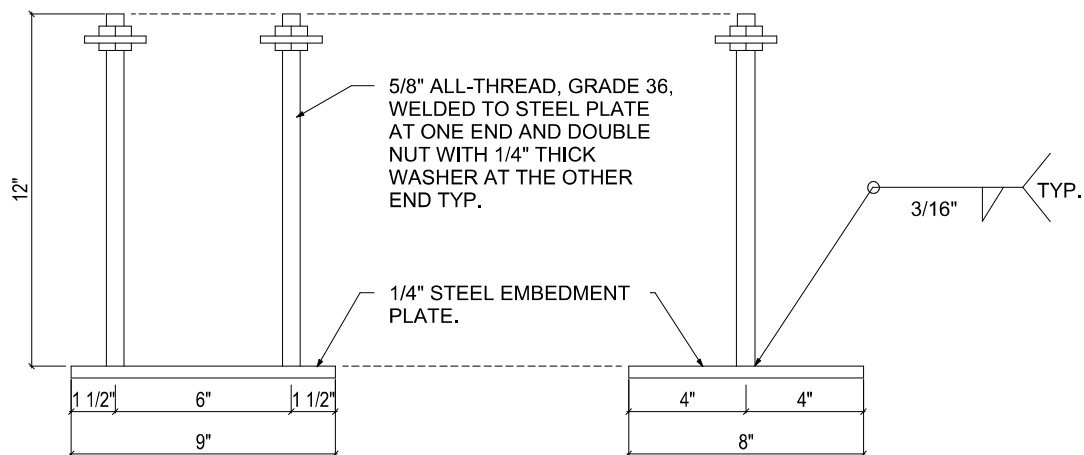


PLOT DATE:



**ENLARGED - TYP AT PIERS  
COUNT-26**

① 1" = 1'-0"



5/8" ALL-THREAD, GRADE 36,  
WELDED TO STEEL PLATE  
AT ONE END AND DOUBLE  
NUT WITH 1/4" THICK  
WASHER AT THE OTHER  
END TYP.

1/4" STEEL EMBEDMENT  
PLATE.

3/16" TYP.

**② PAD FOOTING ANCHOR PLATE**

6" = 1'-0"