



6361 Box Springs Blvd, Riverside, CA 92507
Office: 909.740.3120

Submittal Transmittal

Bakersfield City School District
Douglas Fletcher Elementary School
135' x 32' TK Classroom Buildings

PROJECT #639

July 11, 2025

Transmitted To: Ordiz Melby Architects
Principal Architect
ATTN: Manuel Maldonado Jr
jmaldonado@ordizmelby.com

Transmitted By: Jeffrey C. Chan-Lugay
jeff@nextmodinc.com

Submittal Package No.:
001-09913-R1

Description:
Exterior Paint

Due Date:
07/16/25

Package Action:
Urgent

Transmitted For:
Review & Approval

Delivered Via:
Email

Tracking Number:
Signed Receipts

Items:	Description
1.	Paint Schedule
2.	Exterior Paint Elevations

Notes:
See Schedule & Cut Sheets
See Drawing

Remarks: Review, comment, and/or approve.

NextMod

SUBMITTAL AND SHOP DRAWING REVIEW

REVIEWED FOR GENERAL CONFORMANCE TO THE CONTRACT DOCUMENTS. THIS REVIEW DOES NOT RELIEVE THE SUBCONTRACTOR OF THE RESPONSIBILITY FOR MAKING THE WORK CONFORMS TO THE REQUIREMENTS OF THE CONTRACT. THE SUBCONTRACTOR IS RESPONSIBLE FOR ALL DIMENSIONS, CORRECT FABRICATION AND ACCURATE FIT WITH THE WORK OF OTHER TRADES.

NO EXCEPTIONS TAKEN
MAKE CORRECTIONS NOTED
REVISE & RESUBMIT

X

Daniel Wastafarro
Signature of Representative

Date: 7/29/25

EXTERIOR PAINT SCHEDULE

Manufacturer: Dunn Edwards, Model / Series – Evershield & Endura-Coat (for metals)

<https://www.dunnedwards.com/colors/>

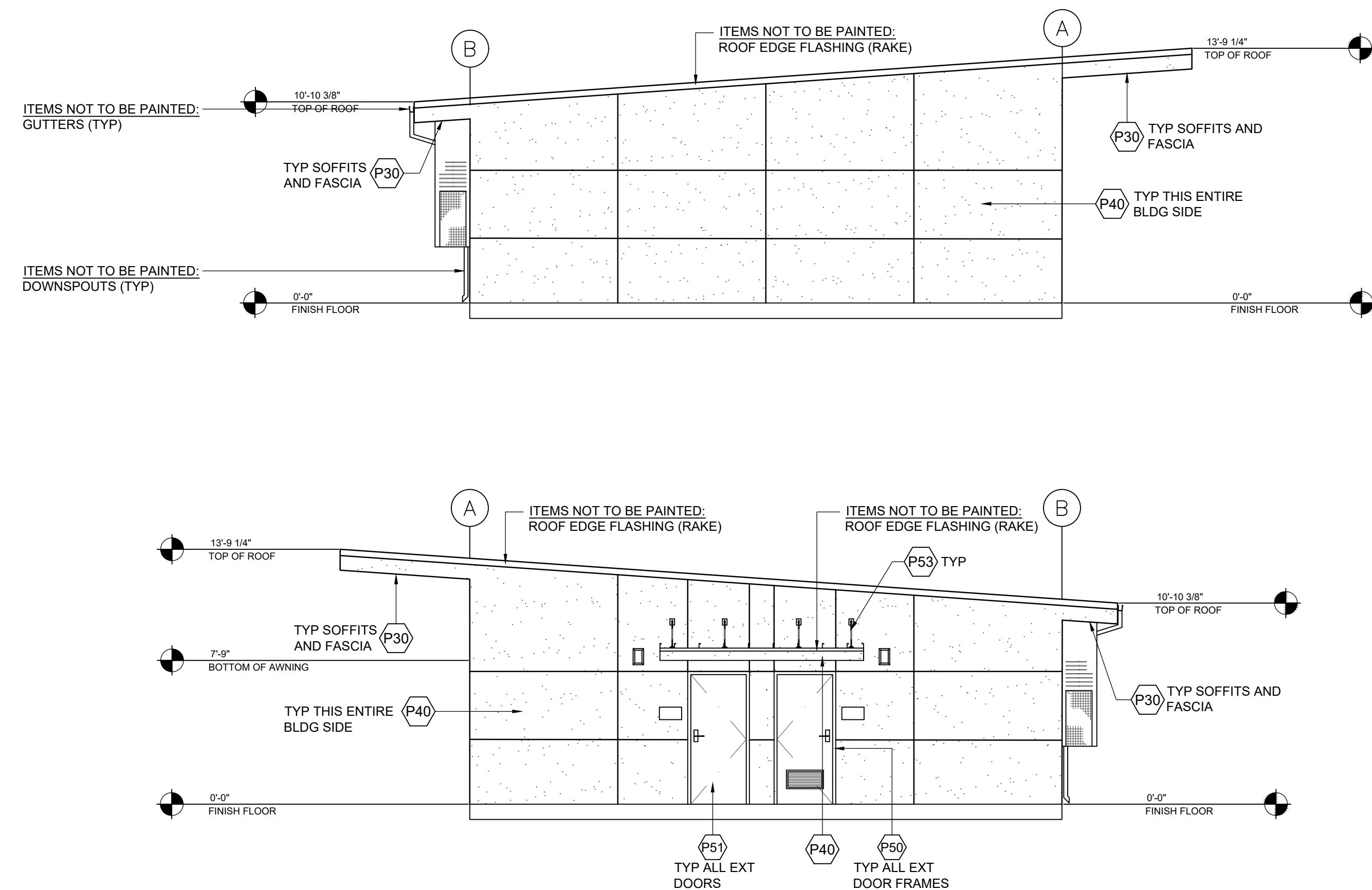
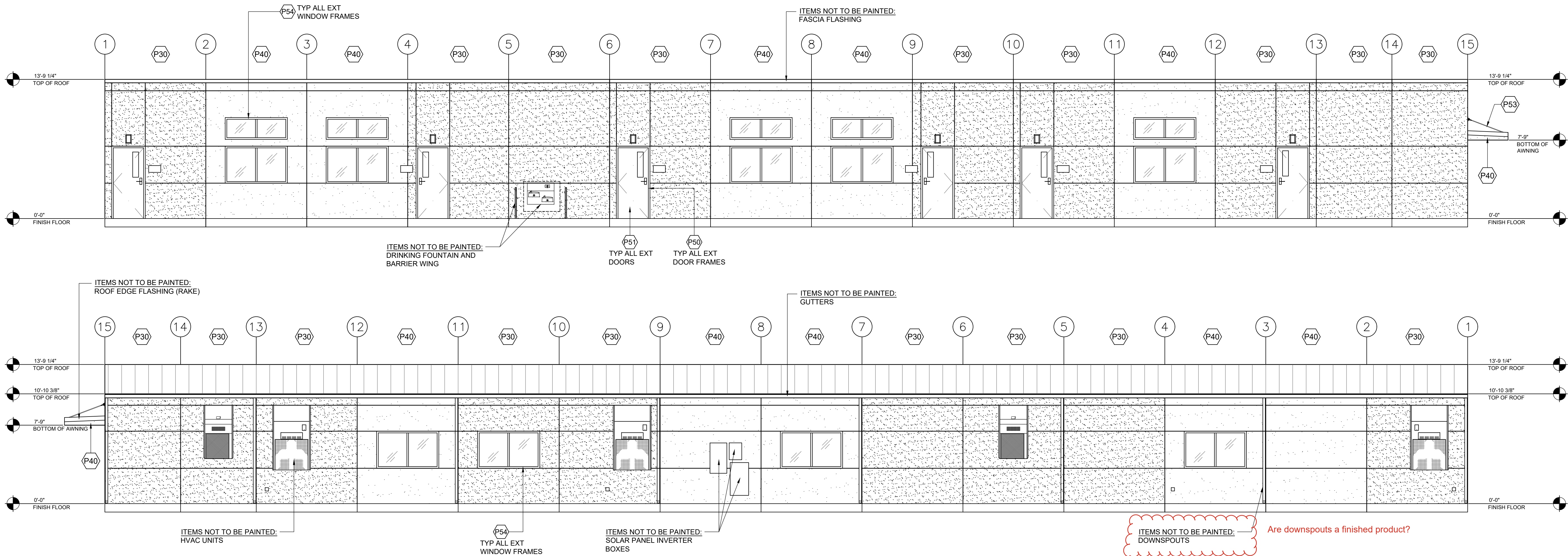
Body (Stucco)	Color: See Exterior Paint Elevation
Doors	Color: See Exterior Paint Elevation
Door Frames	Color: See Exterior Paint Elevation
Exposed Metal	Color: See Exterior Paint Elevation
Downspouts	Color: See Exterior Paint Elevation
HM Window Frames	Color: See Exterior Paint Elevation
Soffits	Color: See Exterior Paint Elevation

Paint Finish Legend: **SAT**: Satin, **SG**: Semi-Gloss, **HG**: High-Gloss, **F**: Flat, **ES**: Eggshell

PRIMER SCHEDULE

Manufacturer: Dunn Edwards

Metals	Model #: Enduraprime
--------	-----------------------------



PAINT SCHEDULE

<p>ELASTOMERIC STUCCO COLOR #01</p> <p>PAINT MANUFACTURER: DUNN EDWARDS</p> <p>PRIMER: N/A</p> <p>PAINT NAME / #: CHAPARRAL DEC 745</p> <p>PAINT SERIES / SHEEN: N/A</p> <p>NOTES: INTEGRAL STUCCO TO BE COLOR MATCH FROM STUCCO MANUFACTURER</p>	<p>AWNING EXPOSED METALS</p> <p>PAINT MANUFACTURER: DUNN EDWARDS</p> <p>PRIMER: N/A</p> <p>PAINT NAME / #: CARMEL APPLE DE 5215</p> <p>PAINT SERIES / SHEEN: ENDURA COAT SEMI-GLOSS</p> <p>NOTES: TURN-BUCKLE, PLATES, CLEVIS, ROD ETC</p>
<p>ELASTOMERIC STUCCO COLOR #02</p> <p>PAINT MANUFACTURER: DUNN EDWARDS</p> <p>PRIMER: N/A</p> <p>PAINT NAME / #: CARMEL APPLE DE 5215</p> <p>PAINT SERIES / SHEEN: N/A</p> <p>NOTES: INTEGRAL STUCCO TO BE COLOR MATCH FROM STUCCO MANUFACTURER</p>	<p>EXTERIOR HM WINDOW FRAMES</p> <p>PAINT MANUFACTURER: DUNN EDWARDS</p> <p>PRIMER: ENDURA PRIME</p> <p>PAINT NAME / #: BLACK FOREST DEA 175</p> <p>PAINT SERIES / SHEEN: ENDURA COAT SEMI-GLOSS</p> <p>NOTES:</p>
<p>EXTERIOR HM DOOR FRAMES</p> <p>PAINT MANUFACTURER: DUNN EDWARDS</p> <p>PRIMER: ENDURA PRIME</p> <p>PAINT NAME / #: BLACK FOREST DEA 175</p> <p>PAINT SERIES / SHEEN: ENDURA COAT SEMI-GLOSS</p> <p>NOTES: PAINT DOOR LOUVERS WHEN APPLICABLE</p>	
<p>EXTERIOR METAL DOORS</p> <p>PAINT MANUFACTURER: DUNN EDWARDS</p> <p>PRIMER: ENDURA PRIME</p> <p>PAINT NAME / #: BLACK FOREST DEA 175</p> <p>PAINT SERIES / SHEEN: ENDURA COAT SEMI-GLOSS</p> <p>NOTES:</p>	
<p>EXPOSED STEEL FLOOR CHANNEL</p> <p>PAINT MANUFACTURER: DUNN EDWARDS</p> <p>PRIMER: ENDURA PRIME</p> <p>PAINT NAME / #: N/A</p> <p>PAINT SERIES / SHEEN: N/A</p> <p>NOTES: STRUCTURAL COATING FOR ALL STRUCTURAL STEEL FLOOR CHANNEL SITS BELOW GRADE AND WILL NOT BE SEEN</p>	

STATE AGENCY APPROVAL



15345 FAIRFIELD RANCH ROAD, SUITE #150, CHINO HILLS, CA 91709
OFFICE: (909) 740-3120, FAX: (909) 726-9470
WEBSITE: WWW.SKCCOMPANY.COM

MANUFACTURER: RWF 1279606 DEALER: # DL1279606
CS-112-F 9/02/18 SBE CERTIFIED

ALL DESIGNS INDICATED ON THESE PLANS/DRAWINGS ARE PROPERTY OF SKC, INC. AND ARE FOR THE USE BY SKC IN THE SPECIFIED JOB ONLY. THEY SHALL NOT BE USED AND/OR DUPLICATED OR TRANSMITTED IN ANY FORM, FOR ANY PURPOSE WITHOUT THE PRIOR WRITTEN CONSENT OF SKC, INC. ANY UNAUTHORIZED USE OF THESE PLANS SHALL SUBJECT THE OWNER OF SAID PROPERTY TO LIQUIDATED DAMAGES OF \$75,000.00. THESE PLANS ARE PROTECTED UNDER THE PROVISIONS OF THE 1976 COPYRIGHT ACT. COPYRIGHT SKC, © ALL RIGHTS RESERVED.

DISTRICT/CUSTOMER NAME:
BAKERSFIELD CITY SD

SCHOOL/SITE NAME:
DOCTOR DOUGLAS K. FLETCHER
ELEMENTARY SCHOOL

SHEET TITLE:

PAINT
ELEVATIONS

PROJECT SPECIFIC PROFESSIONAL OF RECORD

PROJECT SPECIFIC PROFESSIONAL OF RECORD

FIRM:
ADDRESS:
CITY:
PHONE:

REVISIONS

1 -
2 -
3 -
4 -
5 -

PROJECT NO.: 00-0000

DRAFTER: 00

SCALE: AS NOTED

DATE: 00-00-00

SHEET NUMBER

A5.6

7/11/2025 5:3835 PM

ULTRA-PREMIUM EXTERIOR PAINTS

EVERSHIELD®

The Ultimate in Exterior Protection



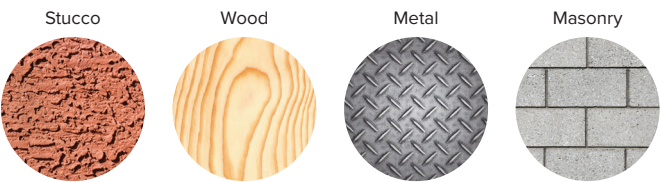
EVERSHIELD

EVERSHIELD paints are ultra-premium exterior, ultra-low VOC, 100% acrylic coatings that provide maximum protection against UV color fade, dirt pick-up, mildew, efflorescence, water intrusion and film failure (grain-cracking, peeling, blistering).

Why EVERSHIELD paints outperform the competition

- :: Formulated using advanced technology and premium ingredients that provide unparalleled performance, durability, coverage and adhesion
- :: Ultimate protection against moisture penetration and UV color fade
- :: Exceptional dirt pick-up resistance
- :: Outstanding gloss retention
- :: Superior non-blocking properties

For use on these substrates



	Flat	Velvet	Eggshell	Satin/ Low Sheen	Semi-Gloss	Gloss
Stucco	•	•	•			
Masonry & Brick	•	•	•			
Wood Siding	•	•	•			
Aluminum	•	•	•			
Vinyl Siding	•	•	•			
Soffit, Fascia & Eaves	•	•	•	•	•	•
Garage Doors & Gutters	•	•	•	•	•	•
Gates & Fences				•	•	•
Doors, Windows & Shutters				•	•	•

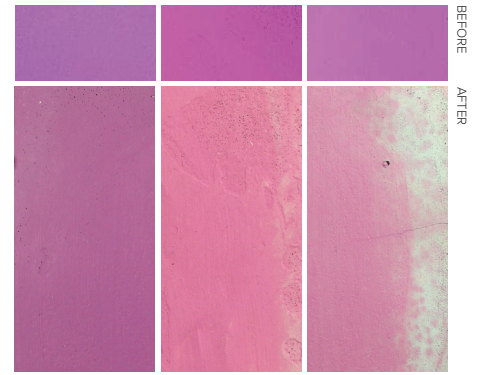
These are commonly used gloss levels for surfaces listed above. Gloss may be affected by texture, porosity of the surface and atmospheric conditions. Please contact a Dunn-Edwards representative or your local store for specific product availability.





Unparalleled alkali burnout resistance

EVERSHIELD paints resist blotching and fading, which can occur on new masonry surfaces.

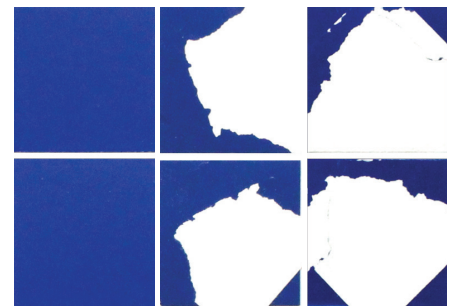


EVERSHIELD Flat Regional Brand National Brand

Alkali burnout occurs when high alkalinity ($\text{pH} > 7$) breaks down the resin, which deteriorates the paint film.

Superior block resistance

EVERSHIELD paints do not stick or peel.

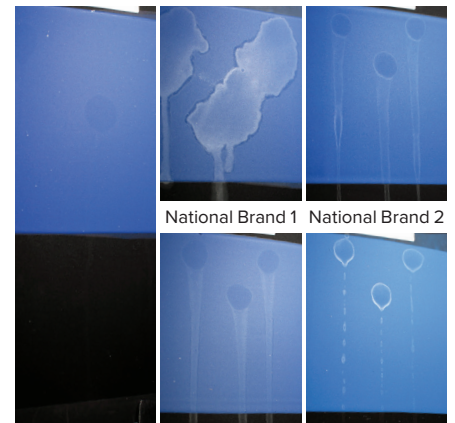


EVERSHIELD Semi-Gloss National Brand 1 National Brand 2

Block resistance is the ability of a dried paint film to resist sticking to another painted surface when pressed together, such as doors and doorjamb.

Industry-leading surfactant leaching resistance

EVERSHIELD paints effectively fight surfactant leaching with no glossy, soapy or sticky residue.



EVERSHIELD Flat National Brand 3 National Brand 4

Surfactant leaching occurs when water-soluble components (surfactants) migrate to the surface when exposed to moisture or high humidity, causing streaking and discoloration.

All test examples are high resolution photographs of the actual test results. The tests were conducted by Dunn-Edwards Laboratories and can be viewed at the corporate office by appointment.

PROTECT WHAT MATTERS

The success of your projects depends on the performance and durability of the products you use. Safeguard your work with coatings engineered to last. You'll be doing your part to protect the planet, too. Made in the world's first and only LEED® Gold-certified paint manufacturing facility, Dunn-Edwards products meet or exceed most environmental standards.



'LEED' and related logo is a trademark owned by the U.S. Green Building Council and is used with permission.



Products bearing this logo are EG-FREE™ and TAC/HAP-FREE. Ethylene glycol (EG), a solvent often used in water-based paints, is listed as a Toxic Air Contaminant (TAC) and Hazardous Air Pollutant (HAP). In 1983, Dunn-Edwards was the first in the industry to voluntarily replace EG with propylene glycol, a nontoxic alternative "generally regarded as safe" by the FDA. Also, every Dunn-Edwards product with the EG-FREE logo is formulated without any other TAC or HAP.

A GREEN LEGACY, A GREENER FUTURE.

Dunn-Edwards has a green legacy that makes us proud and inspires us to do more. We are firmly dedicated to the principle of eco-efficiency, which we define as the ability to satisfy human needs in ways that minimize adverse impacts on energy and material resources, environmental quality, and human health and safety.

HEALTH & SAFETY when using water-based paints:

CAUTION! INHALATION OF SPRAY MIST OR SANDING DUST MAY BE HARMFUL. Use only with adequate ventilation. Avoid breathing vapors, spray mist and sanding dust. Wear a NIOSH-approved N100 filter mask (particulate type) when spraying or sanding. Avoid contact with skin and eyes. Do not ingest. Close container after use.

FIRST AID: If swallowed, immediately give 1 or 2 glasses of water to drink—for emergency information, call 1-800-222-1222. If having difficulty breathing, move to fresh air. For eye contact, immediately flush with water for 15 minutes. For skin contact, wash thoroughly with soap and water.

KEEP OUT OF REACH OF CHILDREN.

For more information, see the appropriate Product Data Sheet(s) and Safety Data Sheet(s) available at dunnedwards.com

CAUTION! Scraping or sanding surfaces of older buildings (especially pre-1978) may release dust containing lead or asbestos. EXPOSURE TO LEAD OR ASBESTOS CAN BE VERY HAZARDOUS TO YOUR HEALTH. Wear a NIOSH-approved N100 particulate filter mask to avoid breathing dust. Use a HEPA vacuum for cleanup, and finish by water-washing all surfaces. For more information, see Dunn-Edwards 'Surface Preparation Safety' guide or call U.S. EPA's lead hotline at 1-800-424-LEAD, or visit epa.gov/lead or epa.gov/asbestos—or contact your state or local Health Agency.

PHOTOGRAPHS: Paint colors depicted in the photographs in this brochure appear differently than on actual surfaces. Photographic processes and lighting will alter appearance. BACK COVER PHOTO: Walls: Warm White (DEW380) FRONT COVER PHOTO: Walls: Milk Glass (DEW358) • Trim: Weathered Brown (DEC756)



(888) DE PAINT (337-2468) | dunnedwards.com

©2024 Dunn-Edwards Corporation. All rights reserved. ESL1017 - 12M 08/24



LEARN MORE

Interior/Exterior
High Performance Coatings

ENDURA SERIES

SPECIALTY



Quality you know,
Performance you can trust.



THE #1 CHOICE OF
PAINTING PROFESSIONALS®

ENDURA SERIES

is a line of a high performance, interior and exterior coatings formulated with excellent chemical and corrosion resistance, and superior adhesion.

ENDURACAT™

is a high-performance, interior, ultra-low VOC, pre-catalyzed, water based, single component epoxy, intended for use where extra durability and chemical resistance is required.

- :: Excellent chemical and stain resistance
- :: Superior adhesion
- :: Mold and mildew resistance

MATERIAL #	MAX VOC CONTENT	MAX RAVOC
ENPX50	Ultra-Low VOC (50 g/L)	20 g/L



Drywall



Metal



Masonry



Wood

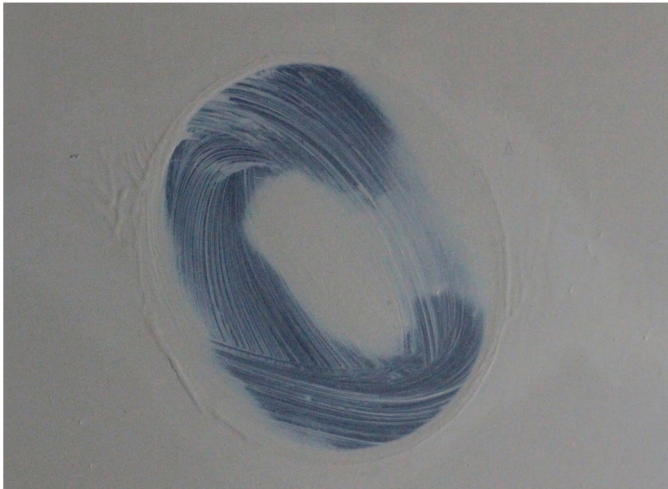


Chemical Resistance

In testing versus competitors, **ENDURACAT™** shows superior resistance to film damage such as blistering and peeling when exposed to harsh chemicals.



ENDURACAT™ Semi-Gloss



NATIONAL BRAND

Chemical Resistance Test Method: The test coating is applied to white scrub panel with a 3 mil bird bar and cured for 7 days. After 7 days, the panels are tested for its chemical resistance to Fantastik, Isopropyl Alcohol, and bleach. Each chemical is applied using a 1 inch double over cheesecloth soaked with 1 mL of solution. The cheesecloth is placed over the index finger and the panel is rubbed for 50 cycles in a circular motion. After chemical is applied the film is examined for any lifting, wrinkling or other defects. Picture shown above demonstrates the results of testing for a solution of 70% Isopropyl alcohol.

All test examples are high resolution photographs of the actual test results. The tests were conducted by Dunn-Edwards Laboratories and can be viewed at the Corporate Office by appointment.



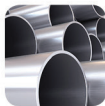
See the ENDURA SERIES difference for yourself

ENDURAPRIME™

is a high performance, interior/exterior, rust preventative, acrylic metal primer formulated to provide excellent early flash rust resistance for quicker return to service.

- :: Early flash rust resistance at high humidity
- :: Superior corrosion resistance on ferrous metal
- :: Fast drying

MATERIAL #	MAX VOC CONTENT	MAX RAVOC
ENPR00-0-GR	Ultra-Low VOC (50 g/L)	30 g/L



Pipes



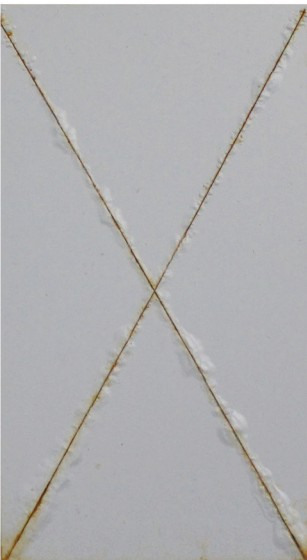
Metal



Steel

Accelerated Corrosion

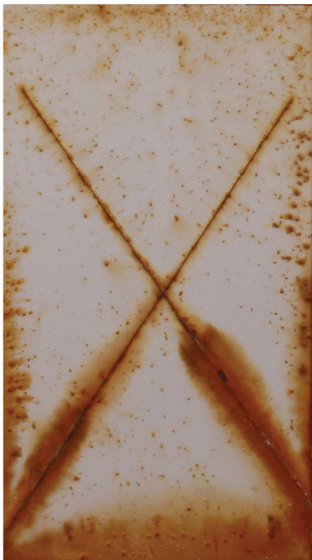
In comparison tests, we applied a single, 2 mil dry coat of **ENDURAPRIME™** and leading rust inhibitive primers on ferrous metal. **ENDURAPRIME™** clearly beats the Regional and National Brands, as their primers show significant rust and corrosion development.



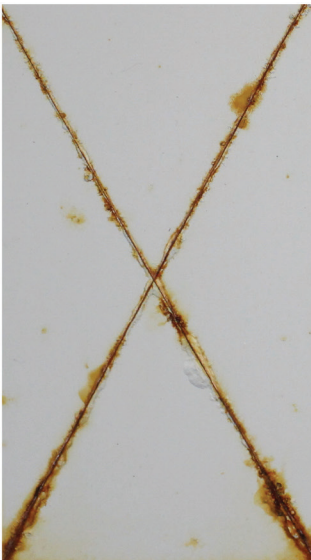
ENDURAPRIME™



Regional Brand



National Brand 1



National Brand 2

ENDURA-COAT®

is a line of high performance, interior/exterior, low VOC, water-based acrylic Industrial Maintenance Coatings with excellent adhesion and corrosion resistance. It can be used on properly prepared and primed metal, wood, masonry, plaster or drywall. *For professional use only.**

- :: Outstanding corrosion resistance and adhesion
- :: Direct to metal application

SHEEN	MATERIAL #	MAX VOC CONTENT	MAX RAVOC
Eggshell	ENCT30	Low VOC (100 g/L)	55 g/L
Semi-Gloss	ENCT50	Low VOC (100 g/L)	55 g/L
Gloss	ENCT60	Low VOC (100 g/L)	55 g/L



Drywall



Metal



Masonry

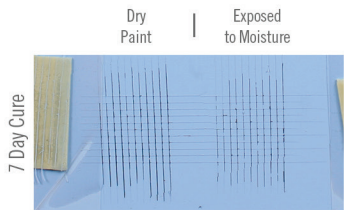


Wood

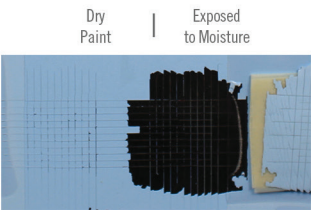


Adhesion

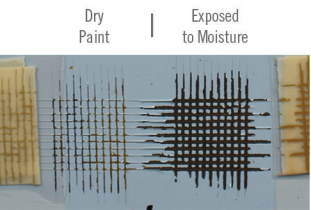
Good adhesion means the paint sticks to the substrate allowing for better protection of the painted surface. ENDURA-COAT® does a better job at sticking to steel, as the competition is more prone to peeling, especially when exposed to moisture.



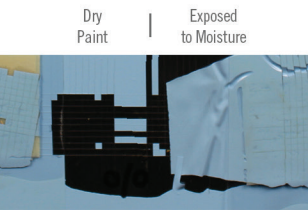
ENDURA-COAT® Semi-Gloss



National Brand 1



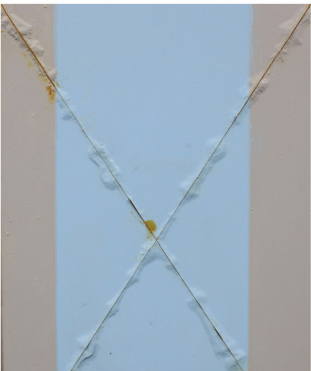
National Brand 2



National Brand 3

Accelerated Corrosion

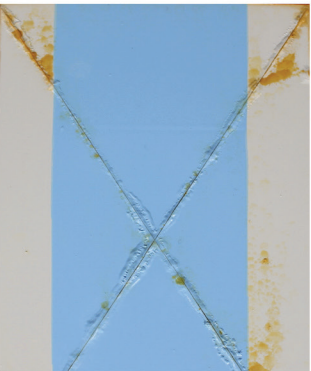
In comparison tests, we applied ENDURA-COAT® and leading competitors on steel. ENDURA-COAT® clearly beats the National Brands, as their paints show significant rust and corrosion development.



ENDURA-COAT® Semi-Gloss



National Brand 1



National Brand 2



National Brand 3

Accelerated Corrosion Test Method: Coatings are applied to a 4 inch by 6 inch dull finish steel panel using a standard drawdown bar to a uniform film thickness of 1.5 to 2.0 mil dry per coat. After drying, a second coat is applied at the same thickness bringing the total film thickness to 3.0 to 4.0 mils dry. After the drying period, all panels were checked for mil thickness and scribed (cut into) with a four inch "X" on the face of the metal panel using a box knife. After scribing the panels, each set was placed into a salt fog chamber where the panels were subjected to a corrosive environment for 504 hours. **Note:** For the topcoat corrosion tests, panels were primed with the recommended metal primer for the competitive samples and with the ENDURAPRIME for the ENDURA-COAT.

Adhesion Test Method: Paint is applied using a 3 mil drawdown to a standardized substrate and allowed to dry for 24 hours at room temperature. After 24 hours, two crosshatch patterns are made, one on the left for dry adhesion and one on the right for wet adhesion. A paper towel is then cut into 1"X1" square and allowed to soak into the film for 10 minutes and then removed and the test area is blotted dry to remove excess water. The film is allowed to dry for 30 minutes. A permacel tape is then cut into approximately 3" long pieces and placed in the center of the cross hatch and smoothed out. The tape is then removed by seizing the free end and pulling it off rapidly back upon itself at an angle as close to 180 degrees as possible. The process is repeated on the dry adhesion crosshatch. After the tape is removed the crosshatches are evaluated and rated. ***For Professional Use Only. Not for residential use. (See PDS for SPECIAL INSTRUCTIONS re: Within SCAQMD.)**



A GREEN LEGACY, A GREENER FUTURE.

Dunn-Edwards has a green legacy that makes us proud and inspires us to do more. We are firmly dedicated to the principle of eco-efficiency, which we define as the ability to satisfy human needs in ways that minimize adverse impacts on energy and material resources, environmental quality, and human health and safety. The ENDURA Series is yet another example of this commitment.

THE #1 CHOICE OF PAINTING PROFESSIONALS®

As a painting contractor, your business depends on your reputation. That's why you choose quality paint to do the best possible job. Dunn-Edwards understands this. That's why we focus on providing the best performing products.

Ask any professional painter and they will tell you, Dunn-Edwards is their number one choice of paint. In an independent survey, licensed painting contractors in Los Angeles, San Diego and Phoenix were asked what paint they would use on their own homes.

The overwhelming choice: Dunn-Edwards.* The reason cited? Superior quality!

"Our company has used Dunn-Edwards for the past 20 years. In addition to excellent service, they have the best performing paints and color selection in the industry."

Frank Rodriguez, Owner
Navajo Contractor Inc.
Los Angeles, CA

Our paints are formulated using only the highest quality ingredients for optimal performance. In addition, our representatives provide an unmatched range of services from color selection to job site walks.

We recognize that our relationship with paint contractors is based on more than what's in a can of paint. We stand ready to provide the best product and service to support your business.

*Based on an February 2015 survey of licensed painting contractors in the Los Angeles, San Diego and Phoenix areas, conducted by Options Market Research.



PRODUCTS BEARING THIS LOGO ARE EG-FREE™ AND TAC/HAP-FREE

Ethylene Glycol (EG), a solvent often used in water-based paints, is listed as a Toxic Air Contaminant (TAC) and Hazardous Air Pollutant (HAP). In 1983, we were the first in the industry to voluntarily replace EG with Propylene Glycol, a non-toxic alternative "generally regarded as safe" by the FDA. Also, every Dunn-Edwards product with the EG-Free logo is formulated without any other TAC or HAP, too.



VOC AND RAVOC RATINGS ON EVERY LABEL

Dunn-Edwards is the first paint company to label its products with RAVOC ratings — Reactivity-Adjusted VOC Content — a better way to measure potential air quality impacts of coatings. To learn more about RAVOC ratings visit dunnedwards.com/RAVOC.



LEED® GOLD-CERTIFIED PAINT MANUFACTURING FACILITY

In 2011, Dunn-Edwards opened the world's first and only LEED® Gold-certified paint manufacturing facility in Phoenix, AZ. Encompassing manufacturing, product development, quality control and more, the 336,000-sq. ft. facility is designed to be the greenest in the industry.

"LEED" and related logo is a trademark owned by the U.S. Green Building Council and is used with permission.



Follow Us



DUNN-EDWARDS CORPORATION

4885 East 52ND Place, Los Angeles, CA 90058
(888) DE PAINT® (337-2468) | dunnedwards.com

Dunn-Edwards®, The #1 Choice of Painting Professionals®, (888) DE PAINT® are registered and/or trademarks of the Dunn-Edwards Corporation. ©2019 Dunn-Edwards Corporation. All rights reserved. ESL0064 • 4M 03/19



**THE #1 CHOICE OF
PAINTING PROFESSIONALS®**