

# INSL24UL



DATA SHEET

24VDC Industrial Slide Gate Operator Section 32 31 00

### Key Features

- Steel Cabinet
- Battery Backup
- Remote Control Access
- Internet Connectivity
- Monitored Safety Devices
- Solar-Power Capabilities
- Diagnostic Display
- Wireless Dual-Gate Communication
- Dual-Gate Control
- Fire Department Compliant
- Limit Setting
- Diagnostic Display
- Programmable Auxiliary Relays
- Unauthorized Access Prevention
- HomeLink® Capability
- Weatherproof 14 gauge, NEMA 3R steel cabinet
- Yes
- Security+ 2.0 P 3-channel receiver will handle up to 50 remote controls (unlimited remotes with B11LMX/B13LMX)
- myQ® Facility cloud connection and myQ capability for secure monitoring and control of gate operator from anywhere\*
- 6 inputs (main and expansion board)
- Yes
- LED diagnostic display
- Eliminates expensive conduit costs and unsightly driveway scars
- Bi-part delay or synchronized close
- Allows gate to auto open upon loss of AC power or battery depletion; Includes manual release
- Electronic
- LED diagnostic display
- 2 programmable auxiliary relays accommodate more accessories such as warning lights/alarms
- Can be programmed with anti-tailgate or quick close capabilities
- Version 4 or higher

### Specifications

- Operator Speed: 0.5 ft./sec. to 1 ft./sec
- Power: 120/240VAC single phase, optional 3 phase kit for 208/230/460VAC and 575VAC
- Accessory Power: 24VDC 1 A max. output; switched and unswitched power
- Operator Weight: 129 lbs.
- Warranty: 5 years
- Temperature Specification: Without heater -4°F (-20°C) to 140°F (60°C); with optional heater: -40° F(-40°C) to 140°F (60°C) II, III, IV
- UL Usage Classification

### Construction

- Motor: 24VDC brushless motor with soft start/stop
- Operator Duty Rating: Continuous-duty
- Chassis/Frame: Constructed with 1/4 in. powder coated steel for rust prevention
- Gear Reduction: Direct drive 40:1 gear ratio
- Cover/Cabinet: Powder-coated, 14 gauge steel cabinet, oil tight, weatherproof
- Chain: NEMA 3R lockable cabine
- Recommended Capacities: Rated for gates up to 70 ft. in length and weighing up to 2200 lbs.

\*When linked with a myQ Facility capable access control. Cellular data or Wi-Fi® connection required



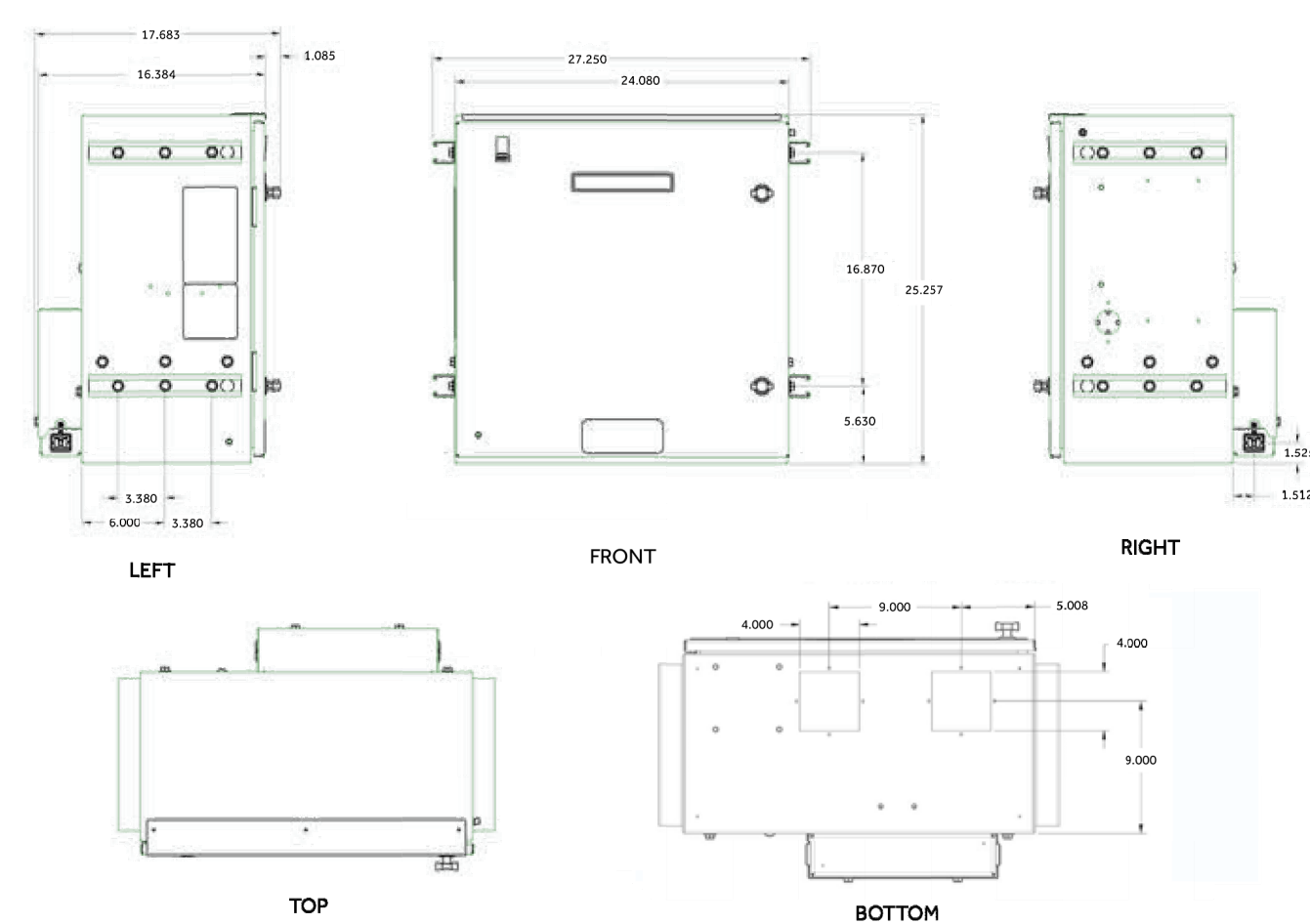
# INSL24UL



DATA SHEET

24VDC Heavy-Duty Industrial Slide Gate Operator Section 32 31 00

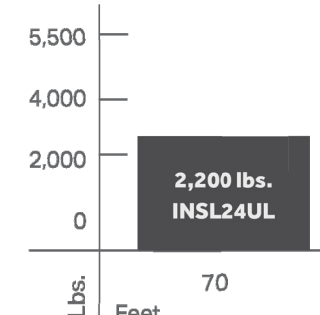
### Dimensions



### Capacity

Battery	Cycles	Standby Time
7Ah	55	105 Days
33Ah	170	180 Days

### Recommended Capacity



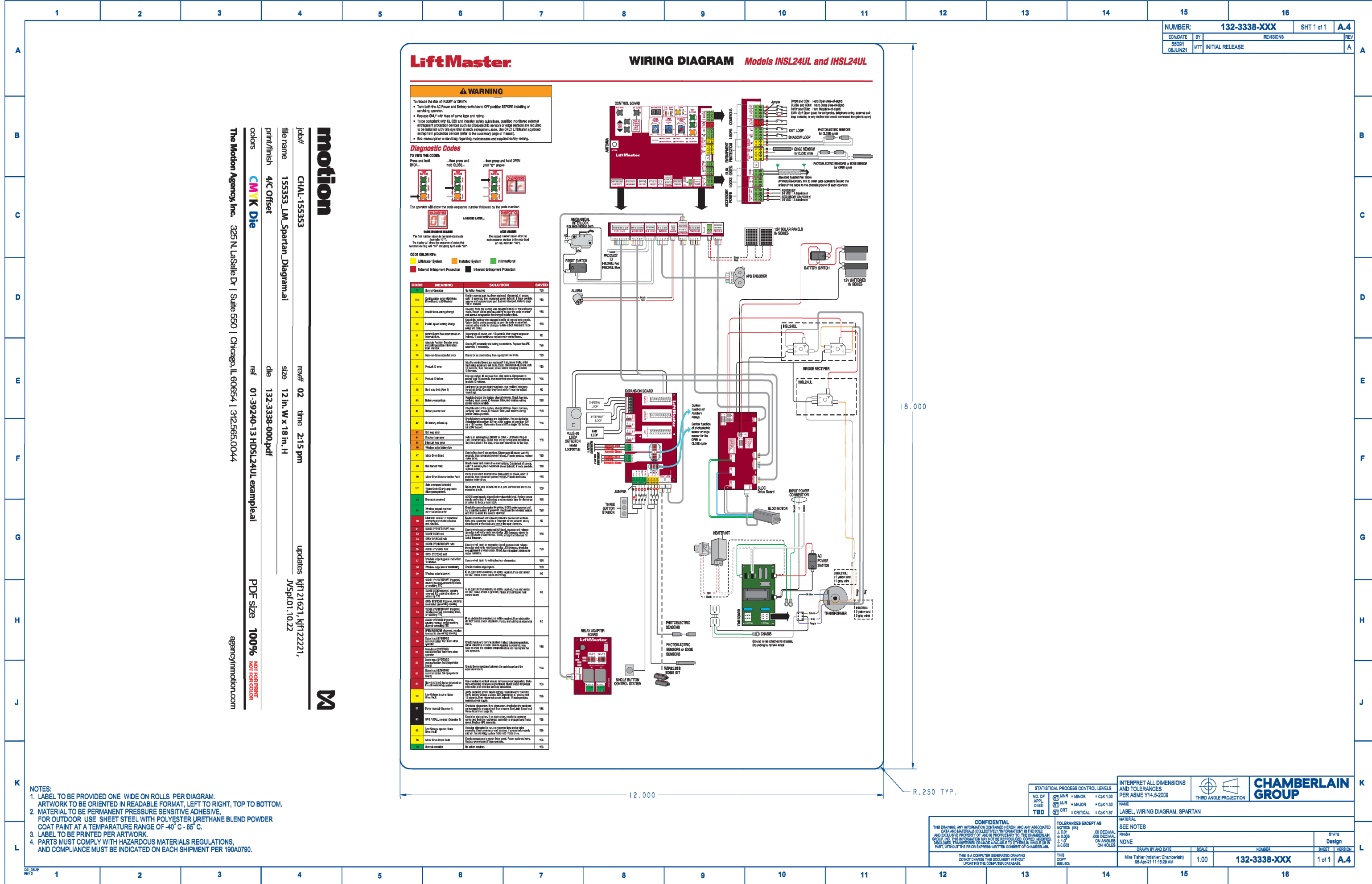
Features	Residential Gate Operators					Elite® Series DC Commercial Gate Operators		Heavy-Duty DC Commercial Gate Operators	
	LA40PRED	LA40PRED	LA40PRED	RS120UL	RS120UL	CSL24UL	CSW4UL	MSL24UL	MSW24UL
Description	24VDC Linear Actuator	12VDC Solar Linear Actuator	24VDC Residential Light Commercial Linear Actuator	120VDC Residential Light Commercial Slide Gate Operator	120VDC Residential Light Commercial Slide Gate Operator	24VDC High-Traffic Commercial Slide Gate Operator	24VDC High-Traffic Commercial Slide Gate Operator	24VDC Heavy Duty Commercial Slide Gate Operator	24VDC Heavy Duty Commercial Slide Gate Operator
Max. Gate Weight	850 lbs.	850 lbs.	1600 lbs.	800 lbs.	1000 lbs.	1500 lbs.	1600 lbs.	3000 lbs.	3000 lbs. (with optional anvil)
Max. Gate Length	16 ft.	16 ft.	18 ft.	25 ft.	16 ft.	50 ft.	18 ft.	25 ft.	27 ft. @ 2200 lbs. 14 ft. @ 600 lbs.
Gate Speed	90" in 15-17 sec.	90" in 20-24 sec.	90" in 15-17 sec.	107" in 15-17 sec.	90" in 12-15 sec.	127" in 15-15 sec.	90" in 15-15 sec.	6-12" /sec.	13-36 sec.
Recommended Cycles	100 cycles	100 cycles	300 cycles	120 cycles	250 cycles	Continuous Duty	Continuous Duty	Continuous Duty	Continuous Duty
Battery Backup	400 cycles	Not Applicable - Solar	500 cycles	114 cycles	147 cycles	208 cycles	148 cycles	45 cycles	45 cycles
Security+ 2.0P	Yes	No	Yes	Yes	Yes	Yes	Yes	No	Yes
myQ Enabled	Yes	Yes	Yes	Yes	Yes	Yes	Yes	Yes	Yes
Monitored Safety Inputs (DSRF Coded)	3 inputs	3 inputs	3 inputs (Main and Expansion Board)	3 inputs	3 inputs	8 inputs (Main and Expansion Board)	8 inputs (Main and Expansion Board)	8 inputs (Main and Expansion Board)	8 inputs (Main and Expansion Board)
Standby Power	Up to 97 days	Up to 120 days	Up to 24 days	Up to 63 days	Up to 63 days	Up to 24 days	Up to 24 days	Up to 120 days	Up to 120 days
Solar Performance - Cycles per Day	Approx. 61 cycles*	Approx. 100 cycles*	Approx. 43 cycles*	Approx. 33 cycles*	Approx. 41 cycles*	Approx. 22 cycles*	Approx. 15 cycles*	Approx. 11 cycles*	Approx. 14 cycles*
DC Motor with Smooth Start/Stop	Yes	No	Yes	Yes	Yes	Yes	Yes	Yes - Brushless DC	Yes - Brushless DC
Diagnostic Code Display - 2-Digit LED	Yes	Yes	Yes	Yes	Yes	Yes	Yes	Yes	Yes
Wireless Dual-Gate Operation	No	No	Yes	Yes	Yes	Yes	Yes	No	No
Warranty Period	2 Years	2 Years	2 Years	3 Years	3 Years	7 Years Residential / 3 Years Commercial	7 Years Residential / 3 Years Commercial	7 Years Residential / 3 Years Commercial	7 Years Residential / 3 Years Commercial
Standard Power	115V Single Phase	Solar Power	115/208V Single Phase	115V Single Phase	115V Single Phase	115/208V Single Phase	115/208V Single Phase	115/208V Single Phase	115/208V Single Phase

\*Cycles noted are for Zone 1 with a 10W solar panel (8 hours sunlight per day).  
 \*Cycles noted are for Zone 1 with a 20W solar panel (8 hours sunlight per day).  
 Note: LMR3UL/MSL24UL Heater option not recommended for solar applications. Heater option diminishes Standby time and cycles for Battery Backup.

### UL 325 Listed Gate Operator Feature Chart

For specifications and information on all our products, visit [LiftMaster.com/TOTALPAS](http://LiftMaster.com/TOTALPAS)

© 2022 The Chamberlain Group LLC. All Rights Reserved. myQ, the myQ logo, LiftMaster, the LiftMaster logo, are registered trademarks of The Chamberlain Group LLC. LMR3UL/MSL24UL



APPROVAL STAMP



BAKERSFIELD CITY SCHOOL DISTRICT

EDUCATION CENTER  
 1300 BAKER STREET  
 BAKERSFIELD, CA 93305  
 PH: 805.631.4600  
 FAX: 805.326.1485

DEPARTMENT:

MAINTENANCE, OPERATIONS & FACILITIES

1801 PELIZ DRIVE  
 BAKERSFIELD, CA 93307  
 PHONE: (805) 681-8885  
 FAX: (805) 684-4926

PROJECT:

GATE AND FENCING REPLACEMENT

DRAWINGS FOR:

ELP / FACE  
 714 WILLIAMS STREET  
 BAKERSFIELD, CA 93305

CONSULTANT:

REV. NO.:

TITLE:

1

SHEET TITLE:

GATE OPENER SPECS.

PROJECT NO.:

24224.00-69-MD

SHEET NO.:

A-400

RELEASE:

DATE: 4/24/24

