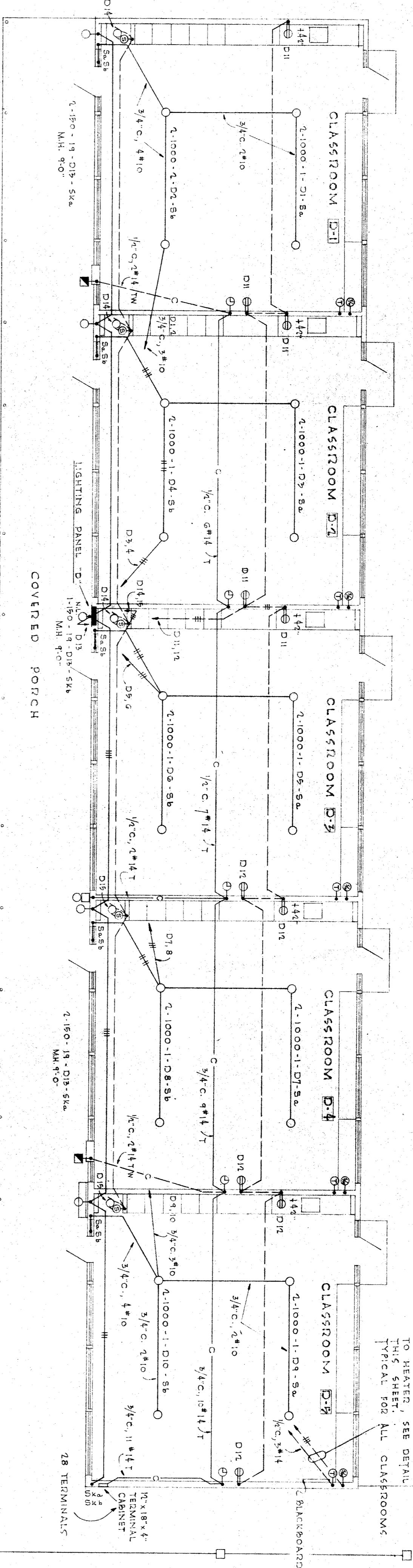
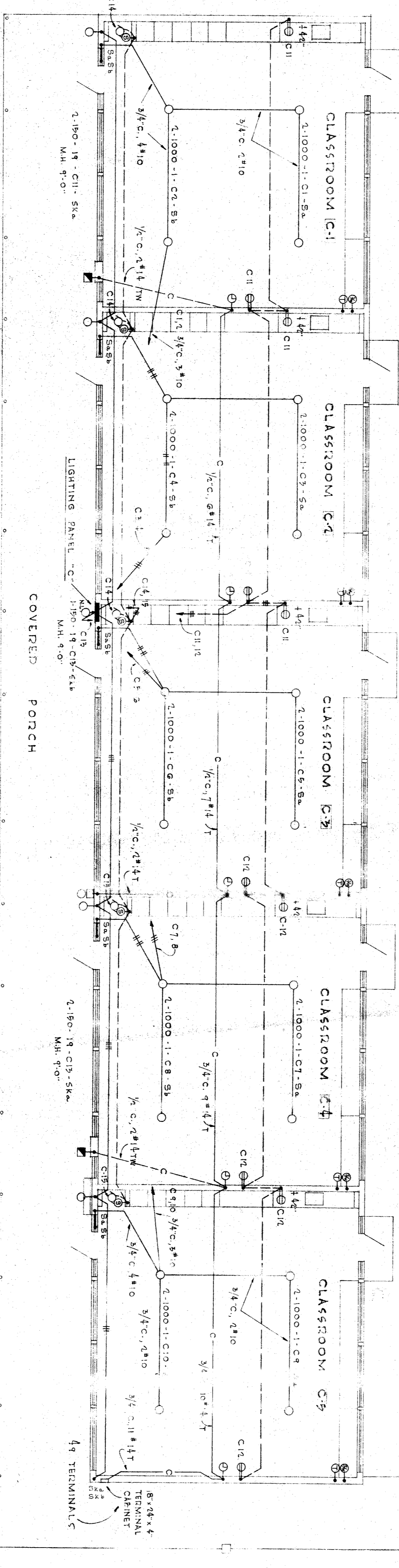


PANEL SCHEDULE "D"	
CIR. NO.	WATTS
1	2000
2	2000
3	2000
4	2000
5	2000
6	2000
7	2000
8	2000
9	2000
10	2000
11	1000
12	1000
13	1500
14	1500
15	1000
16	1000
17	1000
18	1000
TOTAL WATTS 28150 @ 240V. 117 A.	



PLAN - CLASSROOM UNIT "D"
SCALE: 1/8"=1'-0"

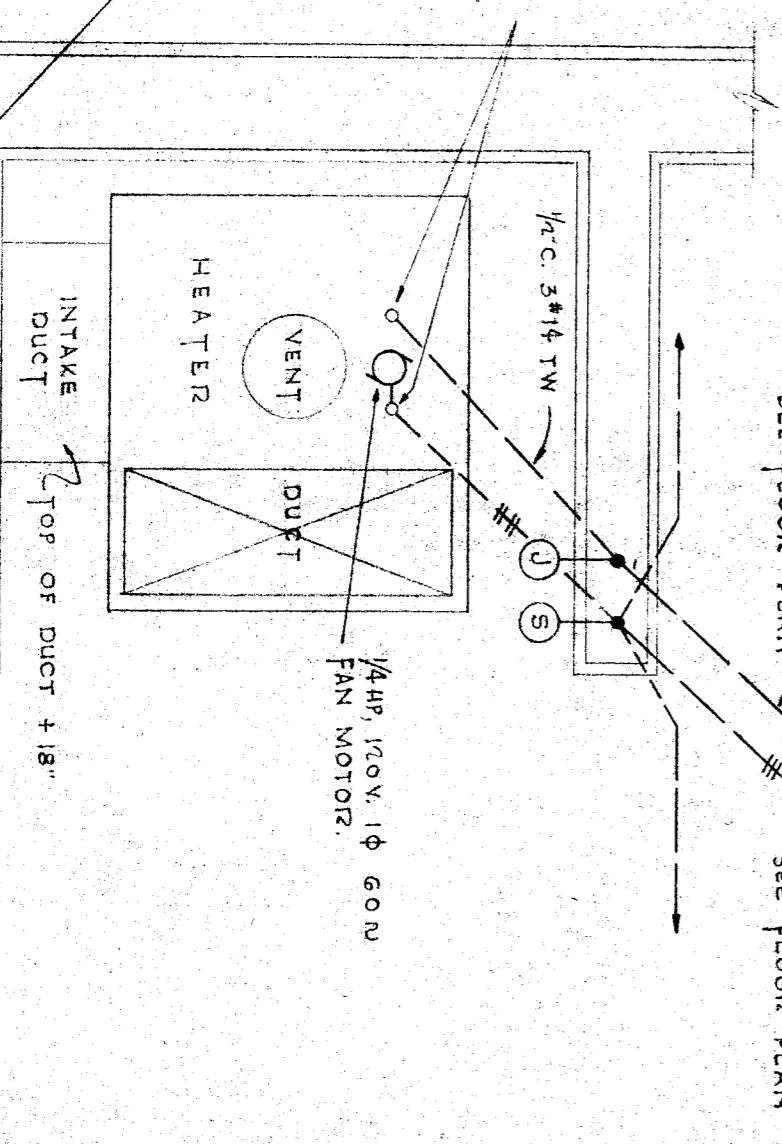
PANEL SCHEDULE "C"	
CIR. NO.	WATTS
1	2000
2	2000
3	2000
4	2000
5	2000
6	2000
7	2000
8	2000
9	2000
10	2000
11	1000
12	1000
13	1500
14	1500
15	1000
16	1000
17	1000
18	1000
TOTAL WATTS 28150 @ 240V. 117 A.	



PLAN CLASSROOM UNIT "C"
SCALE: 1/8"=1'-0"

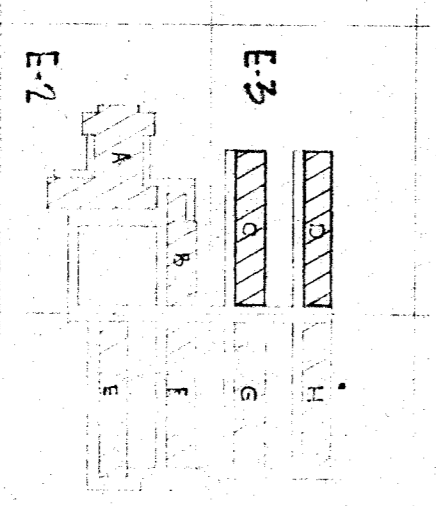
STUB UP CONDUIT + 3" CONTINUE TO EQUIPMENT WITH "FLEX". CONNECT AS REQUIRED.

CONDUITS INTO BOTTOM OF PANELBOARD SHALL BE ROUTED TO MISS FRESH AIR INTAKE DUCT.



HEATER ROOM - TYPICAL FOR ALL CLASSROOMS
SCALE: 1/8"=1'-0"

KEY PLOT PLAN
SCALE: 1/8"=1'-0"



FOSTER K. SAMPSON
REGISTERED ELECTRICAL ENGINEER
CERTIFICATE NUMBER 344
LOS ANGELES CALIFORNIA

STATE OF CALIFORNIA
DEPARTMENT OF PUBLIC WORKS
DIVISION OF ARCHITECTURE

REGISTERED CITY SCHOOL DISTRICT
BOARD OF EDUCATION
APPROVED:

ELECTRICAL FLOOR PLAN - UNITS "C", "D", "H"
POTOMAC & SOUTH KING ST. SCHOOL
FOR THE
BAKERSFIELD CITY SCHOOL DISTRICT
KERN COUNTY CALIFORNIA

DATE: 7-7-49
DRAWN: WRIGHT METCALF & PARSONS
CHECKED: A. R. C. H. I. T. E. C. T. S. A. I. A.
111 KIRKMAN BUILDING BAKERSFIELD CALIFORNIA

SHEET: 133
JOB: E-2