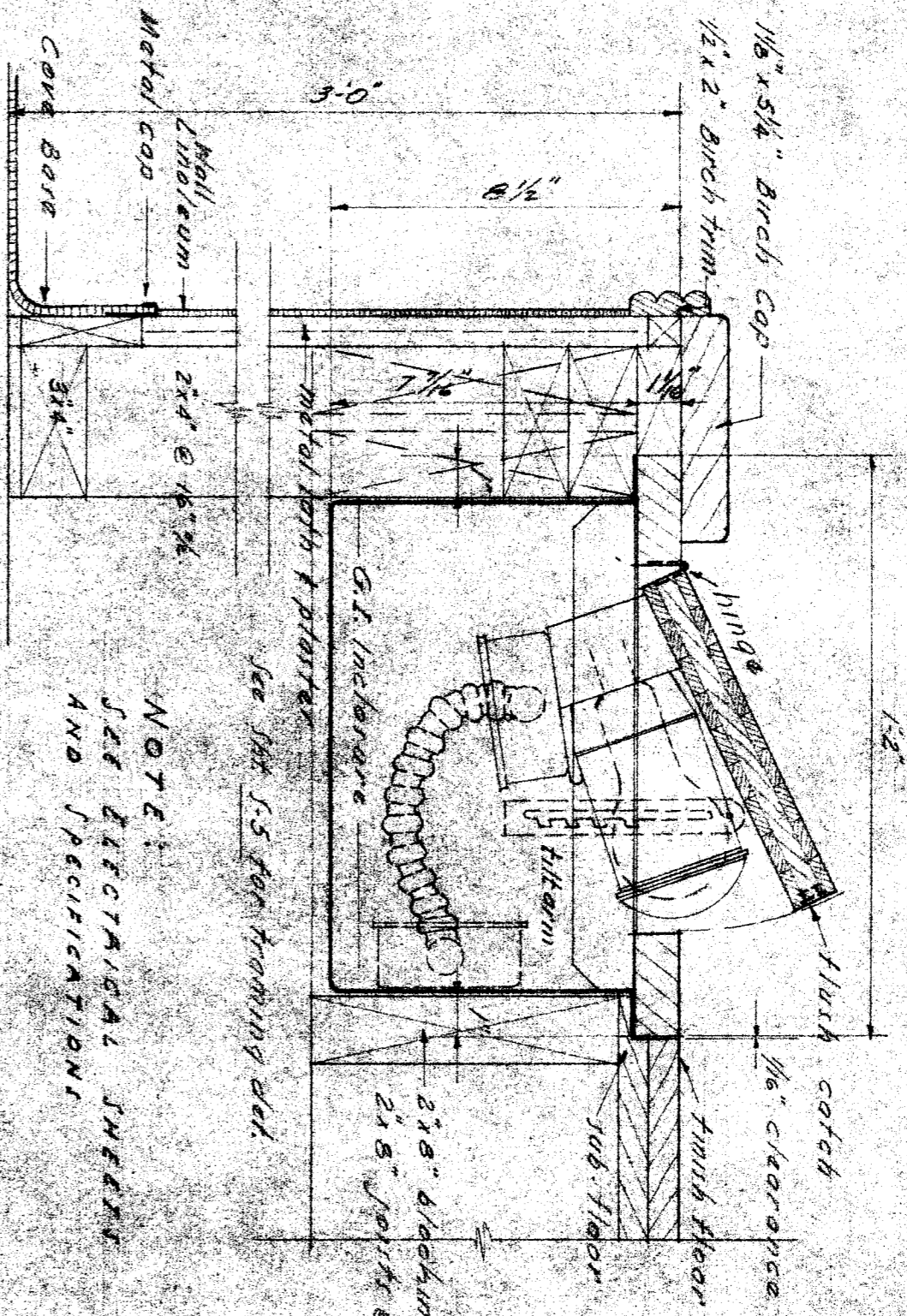
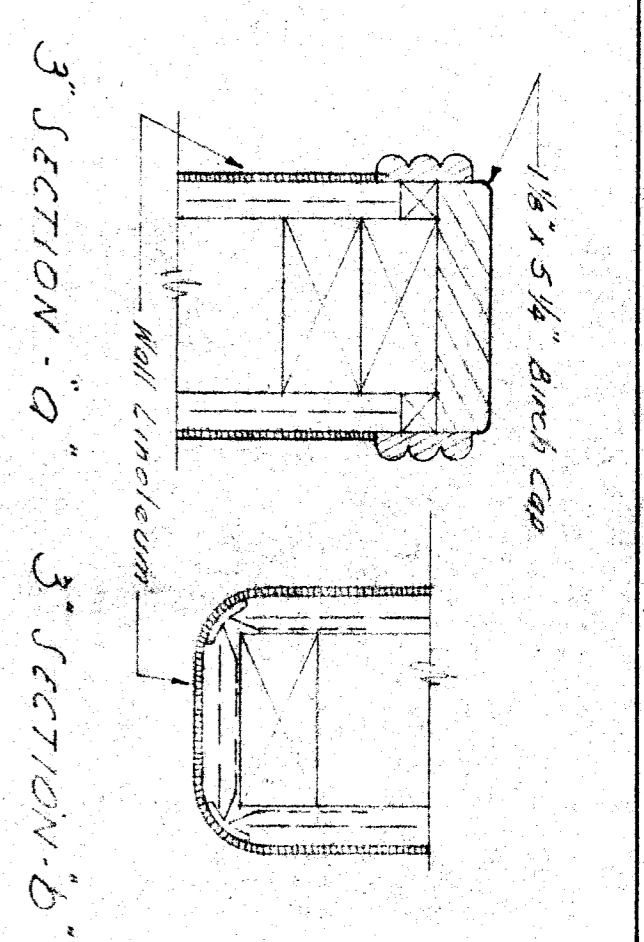
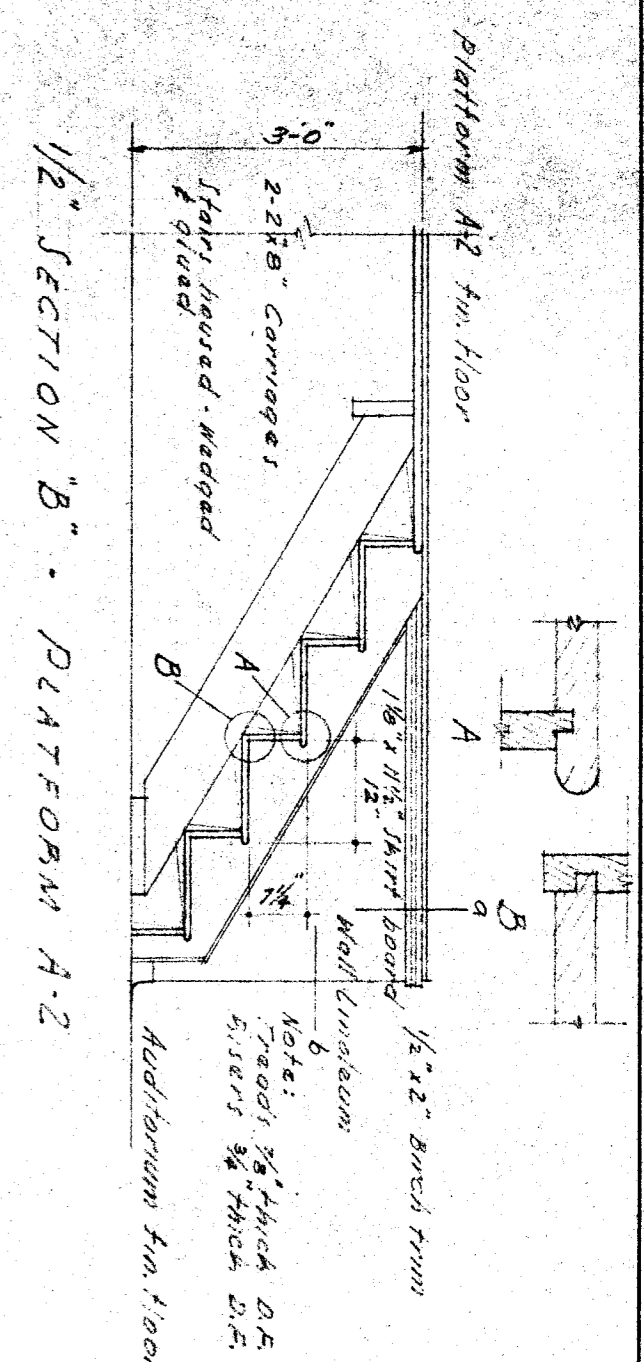
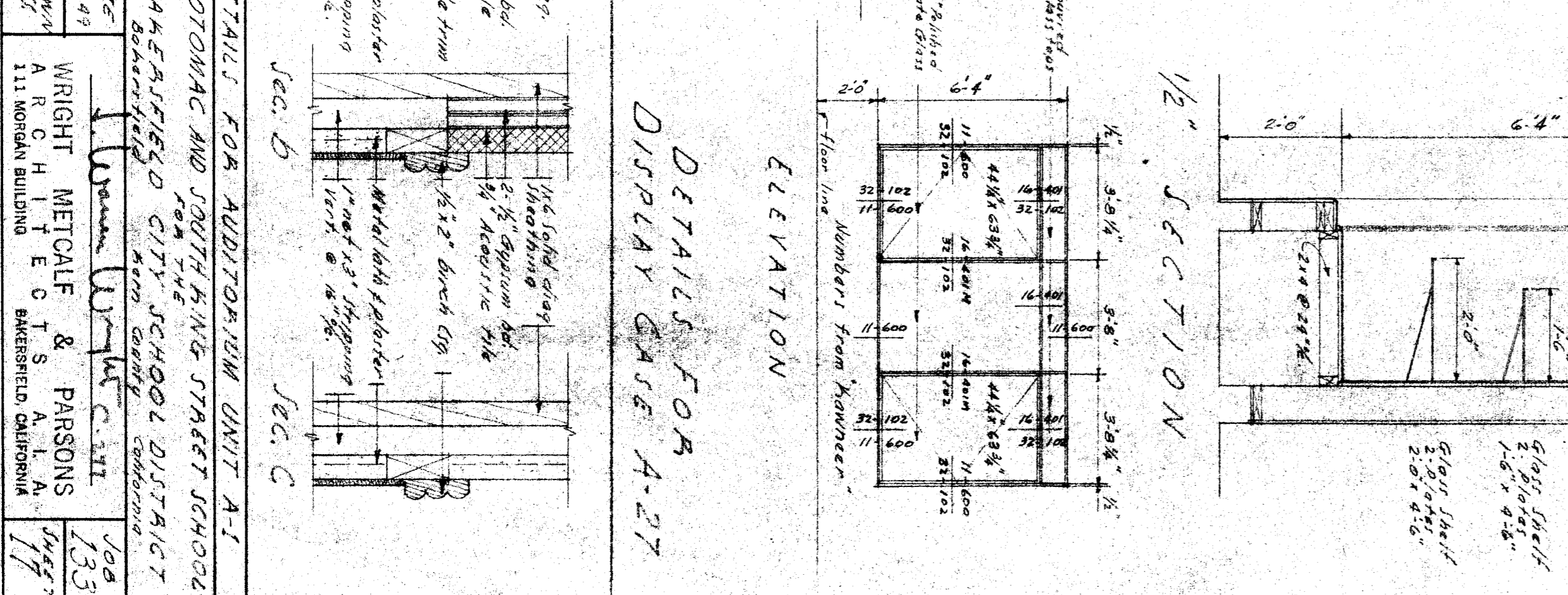
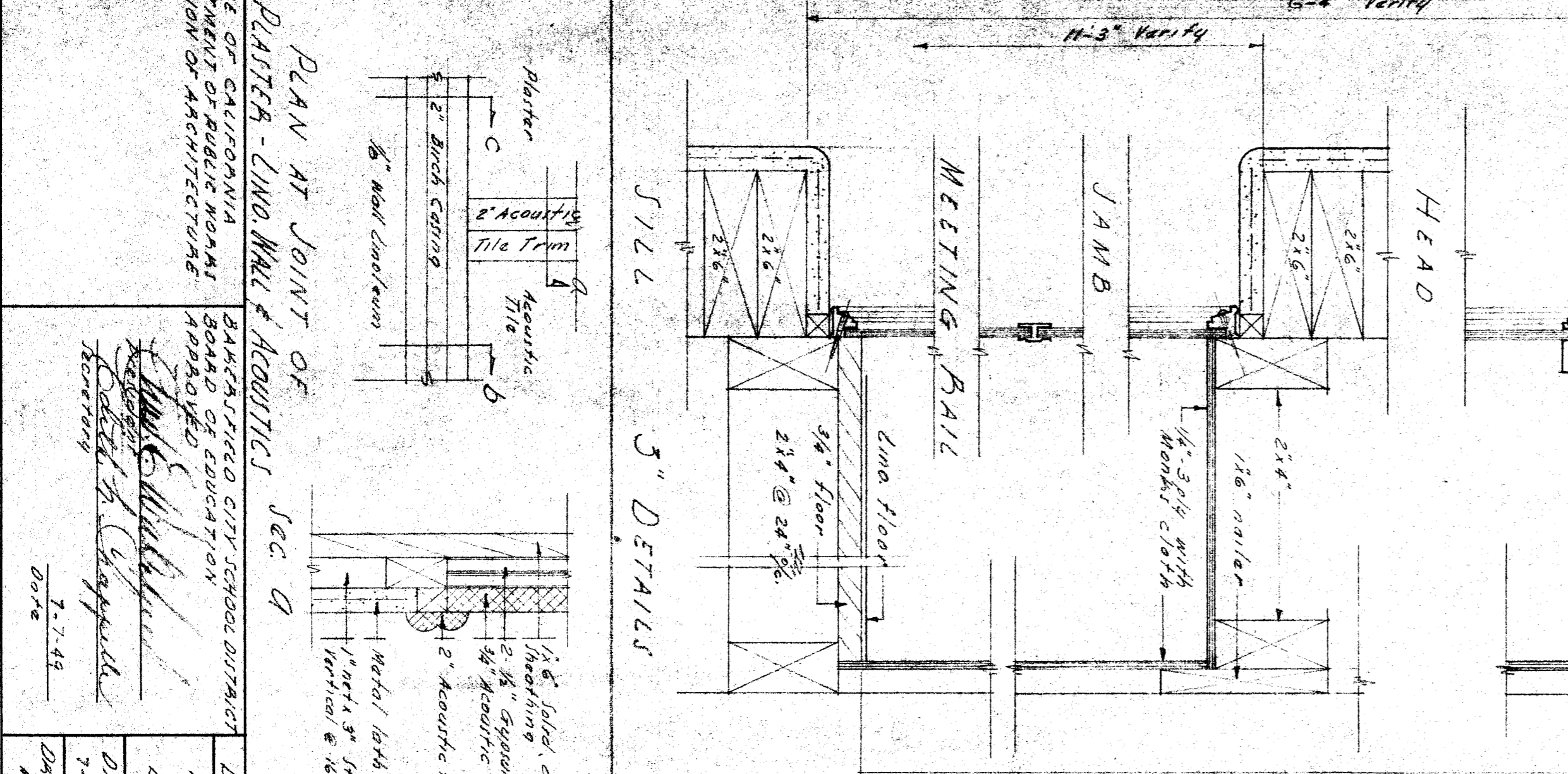
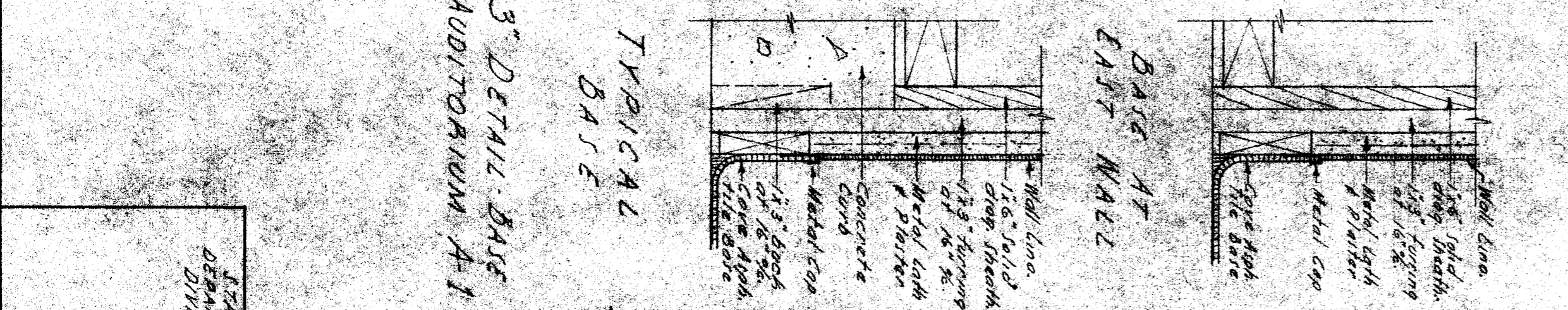
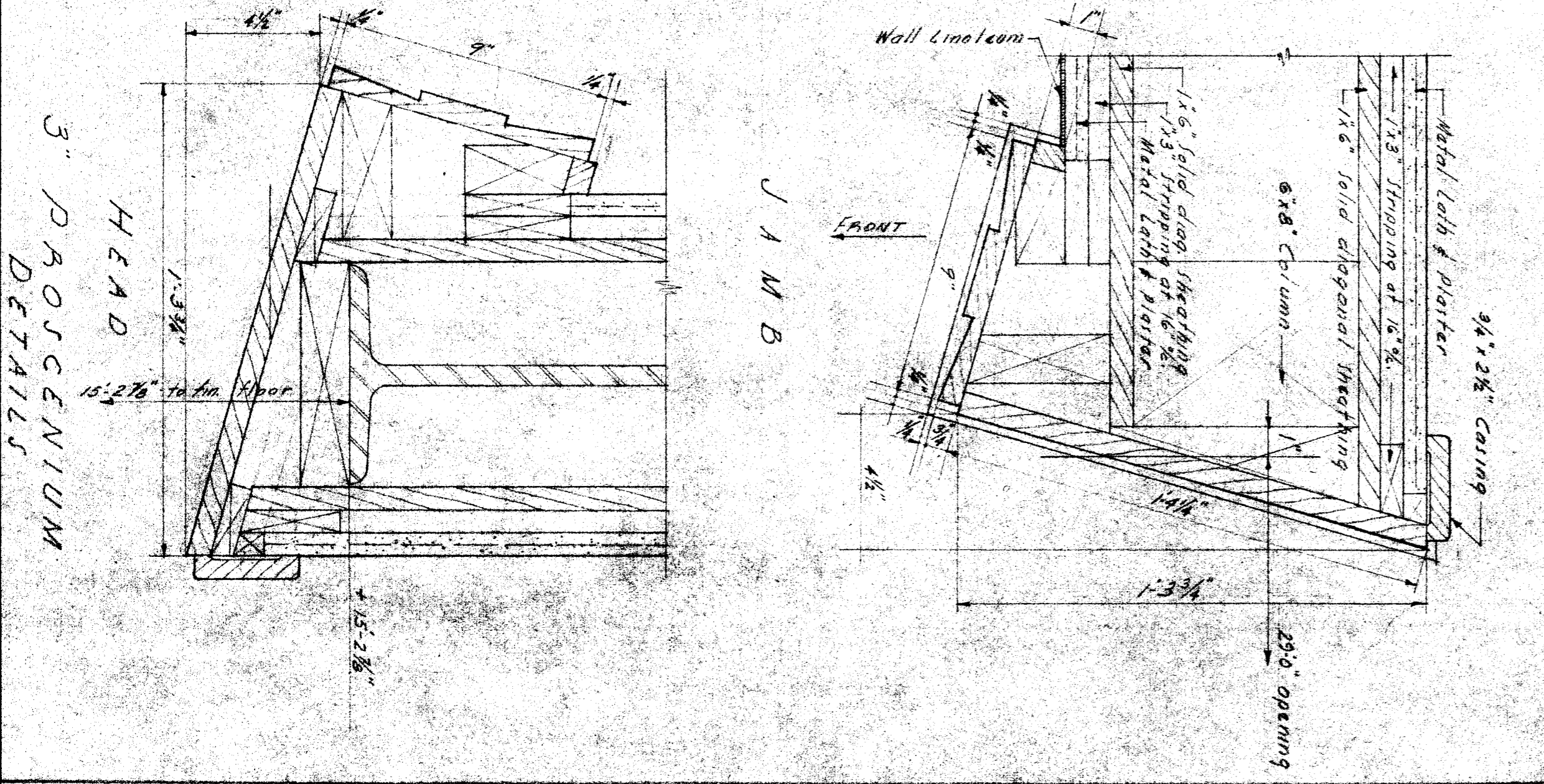
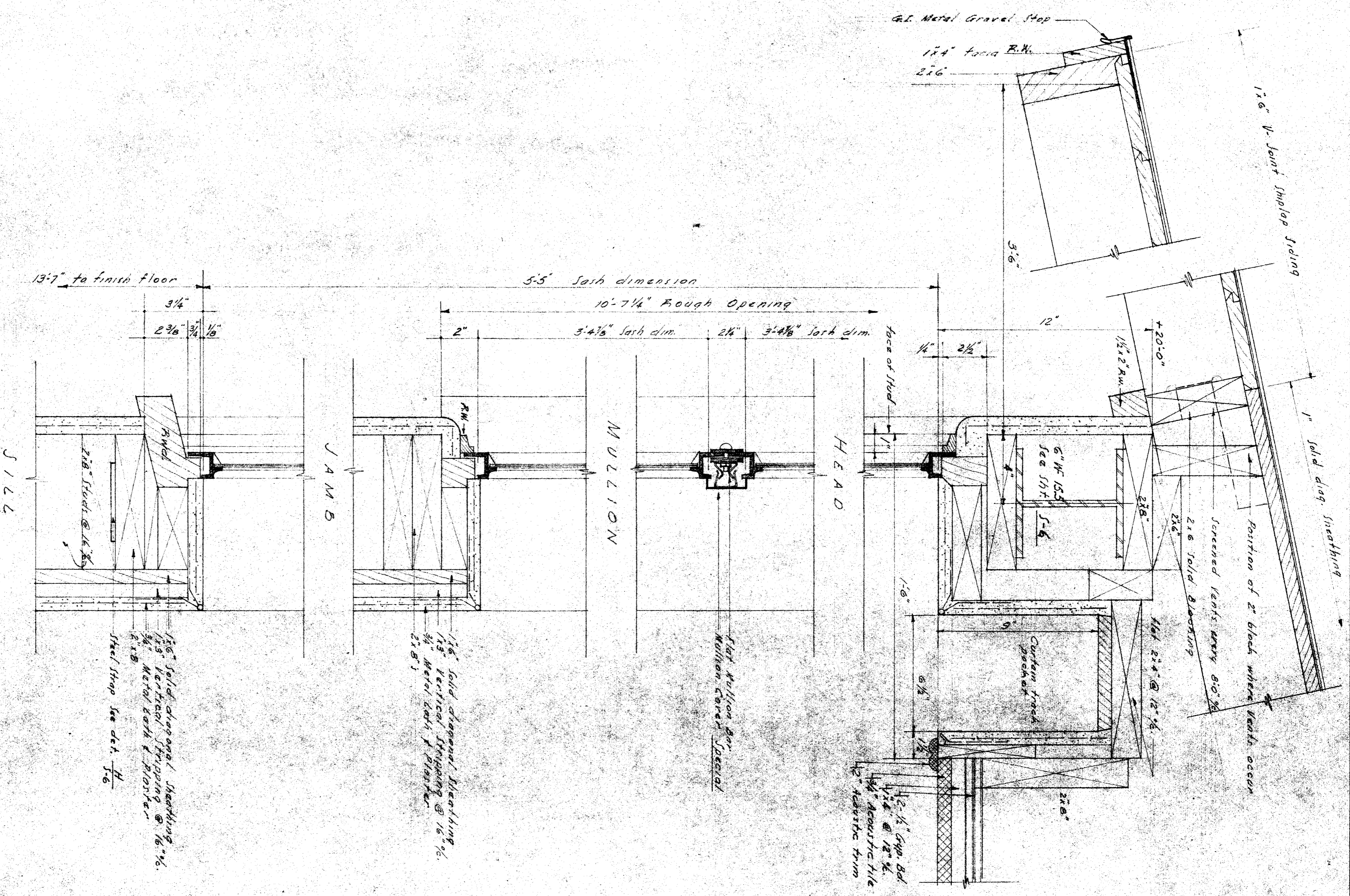
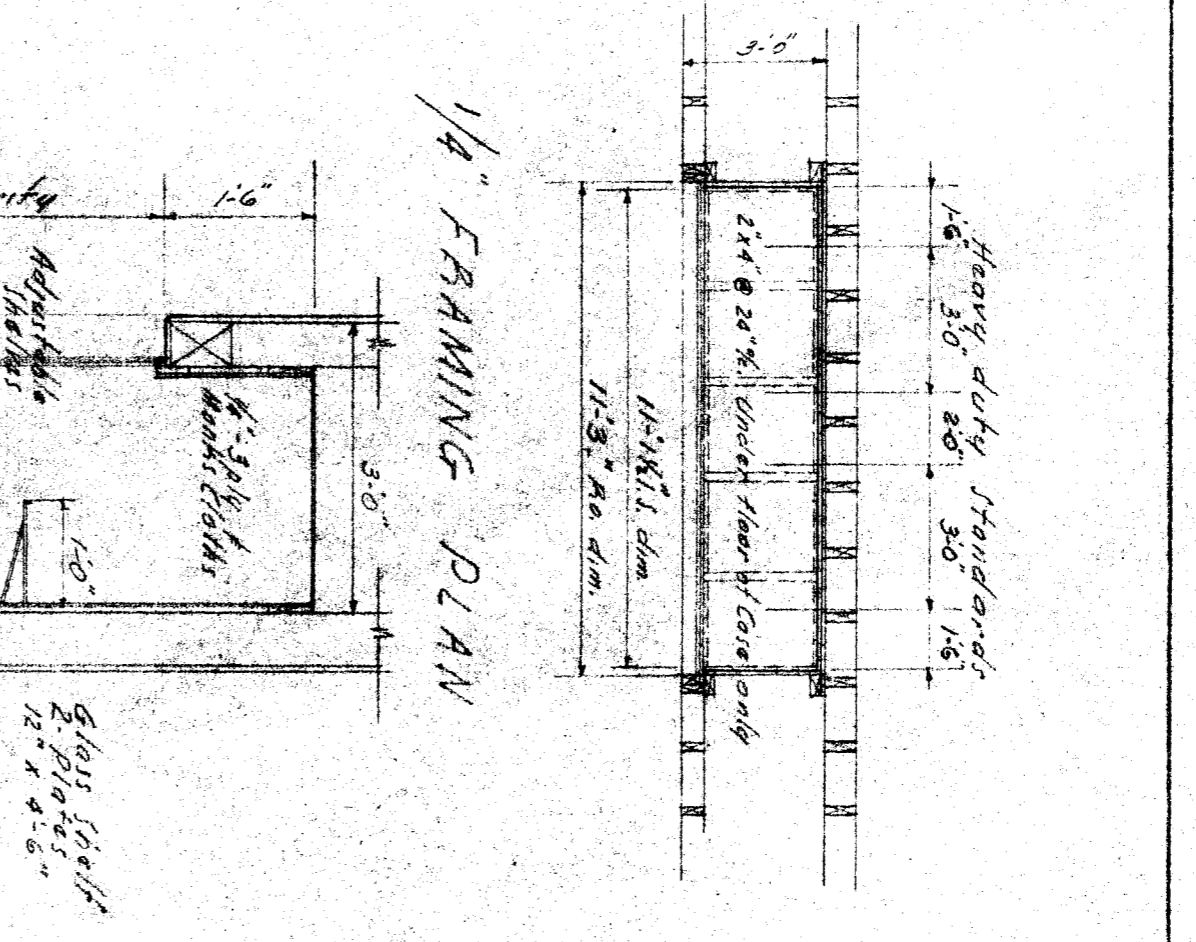
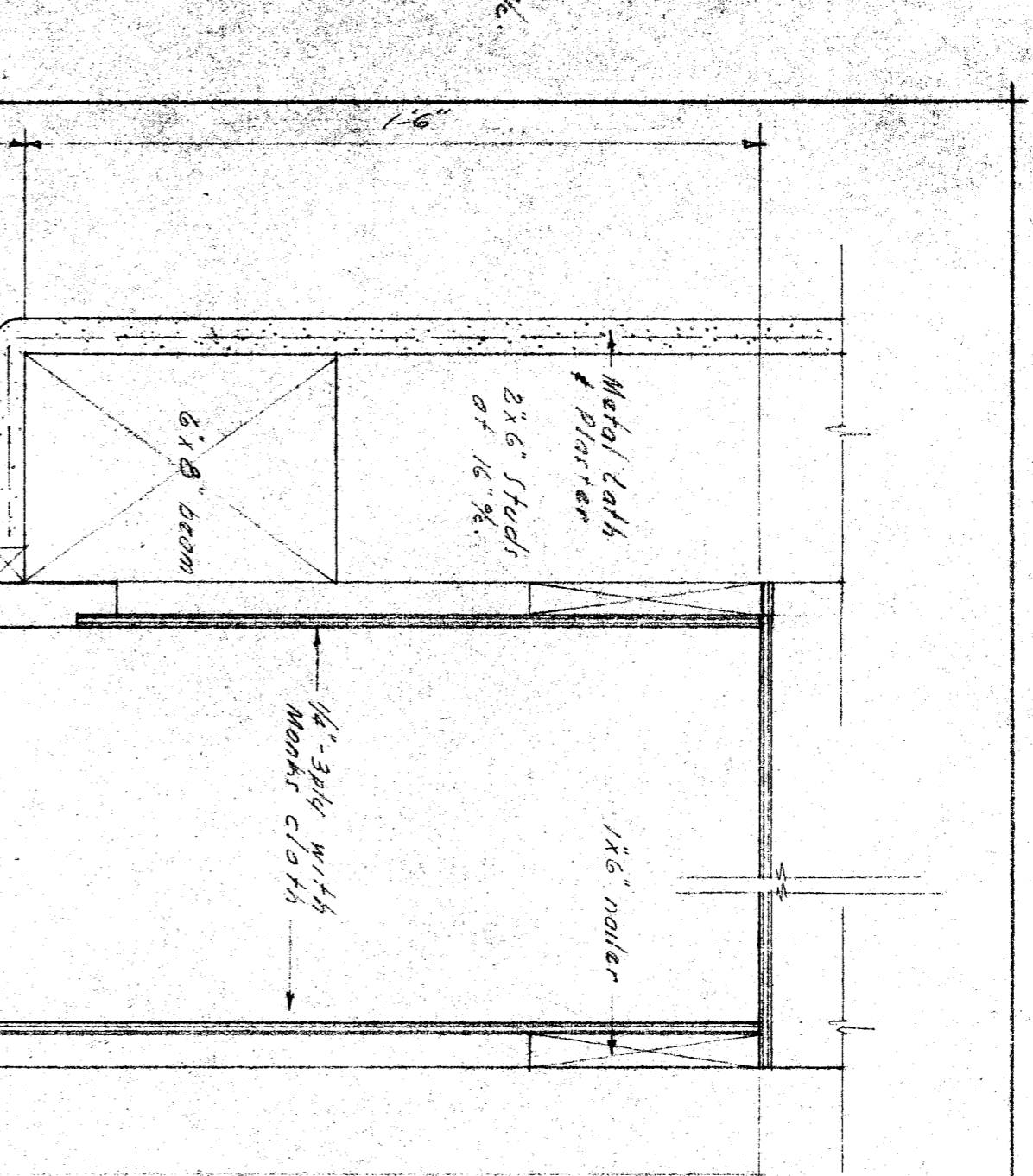


PART PLAN AT PLATFORM A-2



3 SECTION A - AT FOOTLIGHTS



STATE OF CALIFORNIA COUNTY OF SACRAMENTO DIVISION OF ARCHITECTURE REGISTERED ARCHITECT WRIGHT METCALFE & PARSONS 111 MORAN BUILDING SACRAMENTO, CALIFORNIA	DATE: 7-7-43 DRAWN BY: W.M.P. CHECKED BY: W.M.P.	PROJECT: BAERFIELD CITY SCHOOL DISTRICT POTOMAC AND SOUTH KING STREET SCHOOL 133 1943
--	--	--