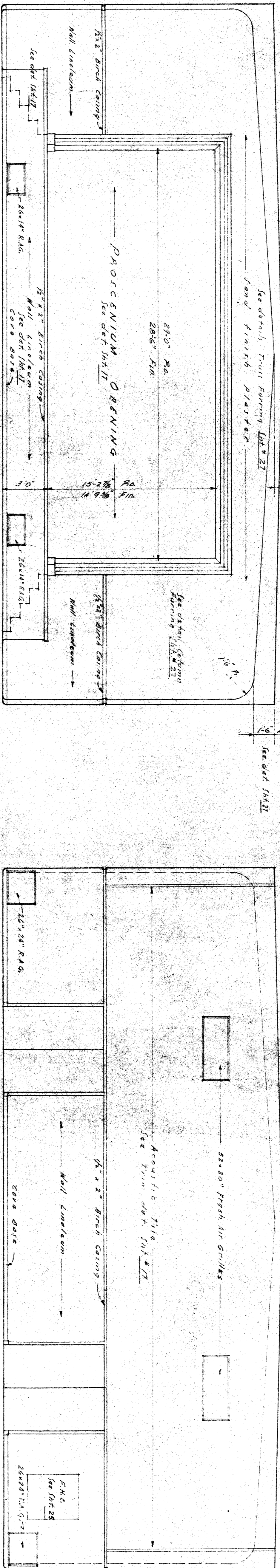
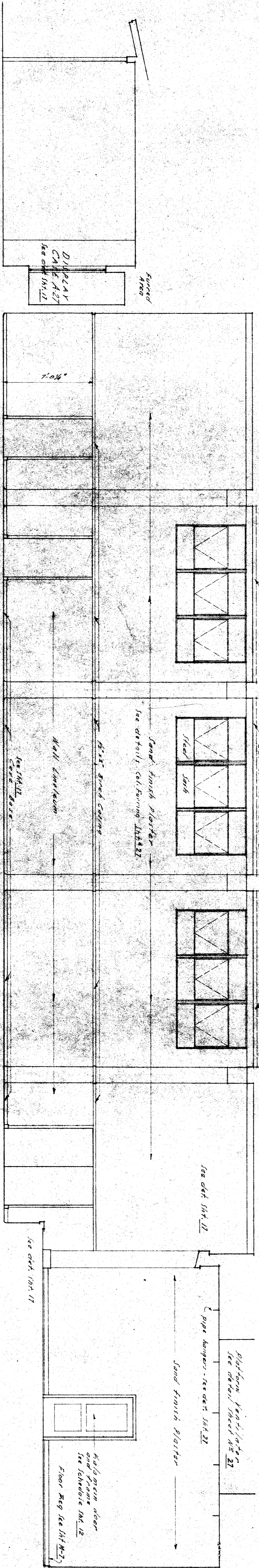


PLATFORM A.2
NORTH WALL



WEST WALL

EAST WALL



PLATFORM A.2

INTERIOR ELEVATIONS — AUDITORIUM A-1 —
1/4" = 1' : 0"

STATE OF CALIFORNIA
DEPARTMENT OF PUBLIC WORKS
DIVISION OF ARCHITECTS

Bakersfield City School District
BOARD OF EDUCATION
Approved: _____
Secretary: _____
Date: 7-1-48

INTERIOR ELEVATIONS AUDITORIUM
POTOMAC AND SOUTH KING STREET, BAKERSFIELD
BAKERSFIELD CITY SCHOOL DISTRICT
DATE: 7-1-48
DRAWN BY: Wright Metcalf & Parsons
WRIGHT METCALF & PARSONS
A. R. C. H. I. T. E. C.
511 MORGAN BUILDING
BAKERSFIELD, CALIFORNIA
JOB NO. 1335
SHEET 16