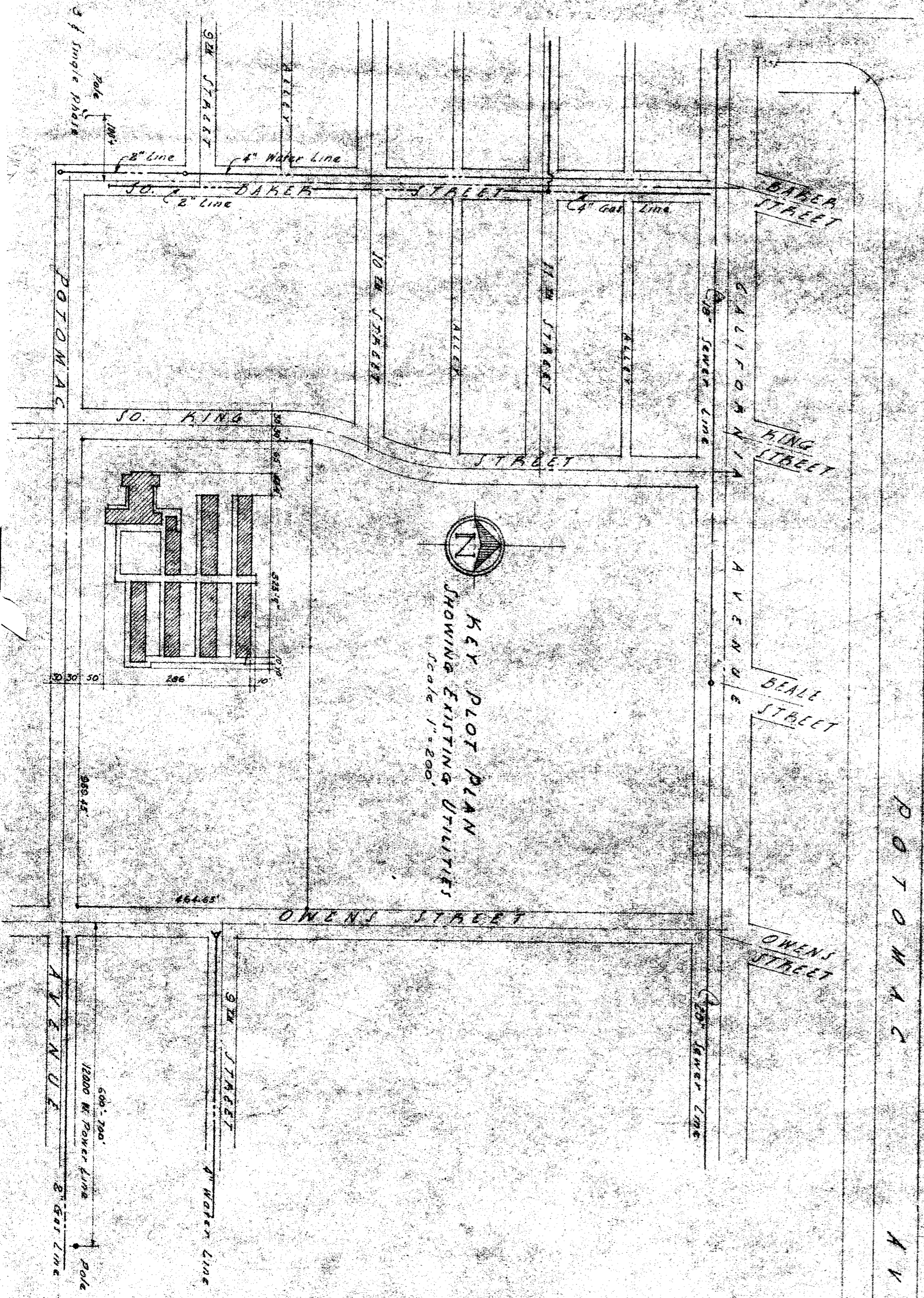


PLOT PLAN  
POTOMAC & SOUTH KING STREET SCHOOL  
Scale 1"=40'



No	TITLE
1	ARCHITECTURAL
1A	PLOT PLAN
1B	GRADING PLAN
2	FLOOR PLAN UNIT A & B
3	FLOOR PLAN UNIT C & D
4	FLOOR PLAN UNIT E & F
5	FLOOR PLAN UNIT G & H
6	EXTERIOR ELEVATIONS UNIT A & B
7	EXTERIOR ELEVATIONS UNIT C & D
8	EXTERIOR ELEVATIONS UNIT E & F
9	EXTERIOR ELEVATIONS UNIT G & H
10	ROOF PLAN & DETAILS
11	INTERIOR FINISH SCHEDULE
12	WINDOW & DOOR SCHEDULE & DETAIL
13	WINDOW DETAIL - CASING
14	WINDOW DETAIL - TOILET ROOM
15	KITCHEN EQUIPMENT & DETAIL
16	INTERIOR ELEVATIONS AROUNDING
17	DETAIL FOR ADDITIONAL UNIT
18	TYPICAL CLASSROOM INTERIOR ELEVATION
19	INTERIOR ELEVATIONS HALLWAYS
20	DETAIL - CASE - HALLWAY UNIT B
21	INTERIOR ELEVATION STAIRWAY
22	CASE ELEVATION - HALLWAY UNIT
23	INTERIOR ELEVATION - TOILET ROOM
24	INTERIOR ELEVATION - HALL DETAIL
25	MISC. DETAIL - DE. F.H.C. LEG RUL. ELEV.
26	ENTRANCE PLAN AND DETAIL
27	DETAIL - PIPE HANGERS - HALLWAY UNIT
28	DOOR JAMB & HEAD DETAIL
STRUCTURAL	
29	TYPICAL DETAIL
30	FOUNDATION PLAN
31	ROOF FRAMING PLAN
32	ROOF FRAMING PLAN
33	ROOF FRAMING PLAN
34	PLATFORM & PARTITION ROOM SECTION
35	SECTION
36	SECTION
37	SECTION
38	SECTION
39	SECTION
40	SECTION
41	TYPICAL CLASSROOM ELEV. & DETAIL
42	HALL FRAMING DETAIL UNIT B & C
43	ENTRANCE DETAIL
44	SECTION
45	SECTION
46	ELECTRICAL
47	ELECTRICAL FLOOR PLAN UNIT A & B
48	ELECTRICAL FLOOR PLAN UNIT C & D
49	ELECTRICAL FLOOR PLAN UNIT E & F
50	ELECTRICAL FLOOR PLAN UNIT G & H
MECHANICAL	
51	PLUMBING LAYOUT
52	PLUMBING LAYOUT UNIT A & B
53	PLUMBING LAYOUT UNIT C & D
54	PLUMBING LAYOUT UNIT E & F
55	PLUMBING LAYOUT UNIT G & H
56	HEATING LAYOUT UNIT A & B
57	HEATING LAYOUT UNIT C & D
58	HEATING LAYOUT UNIT E & F
59	HEATING LAYOUT UNIT G & H
60	TOTAL SHEETS

STATE OF CALIFORNIA  
DEPARTMENT OF PUBLIC WORKS  
DIVISION OF ARCHITECTURE

DIANE FIELD CITY SCHOOL DISTRICT  
BOARD OF EDUCATION  
APPROVED

*[Signature]*  
Architect

PLOT PLAN  
POTOMAC & SOUTH KING ST  
DIANE FIELD CITY SCHOOL  
DIANE FIELD CITY SCHOOL  
DIANE FIELD CITY SCHOOL

111 HANCOCK BUILDING  
MERCED  
CALIF.