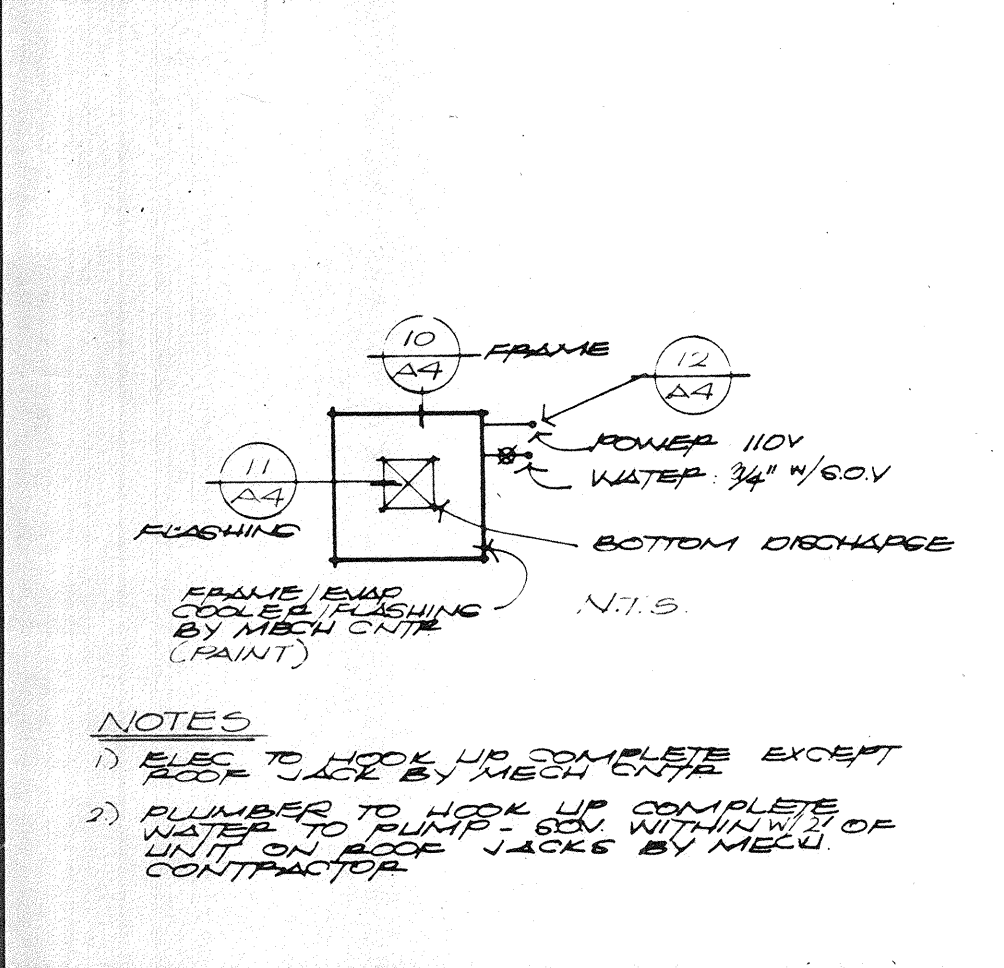


1) STUB-OUT DETAIL N.T.S.

2) TRENCH DETAILS 1/4"



All mechanical and electrical equipment shall be braced or anchored to resist a horizontal force acting in any direction using the following criteria:

Fixed Equipment on Grade	22% of Operating Weight
Fixed Equipment on Structure	33% of Operating Weight
Emergency Power Equipment on Grade	33% of Operating Weight
Emergency Power Equipment on Structure	50% of Operating Weight

For Flexibly Mounted Equipment Use 2 X the above values. Simultaneous Vertical Force - Use 1/3 X Horizontal Force.

Where anchorage details are not shown on the drawings the field installation shall be subject to the approval of the engineer and the field representative of the Office of the State Architect.

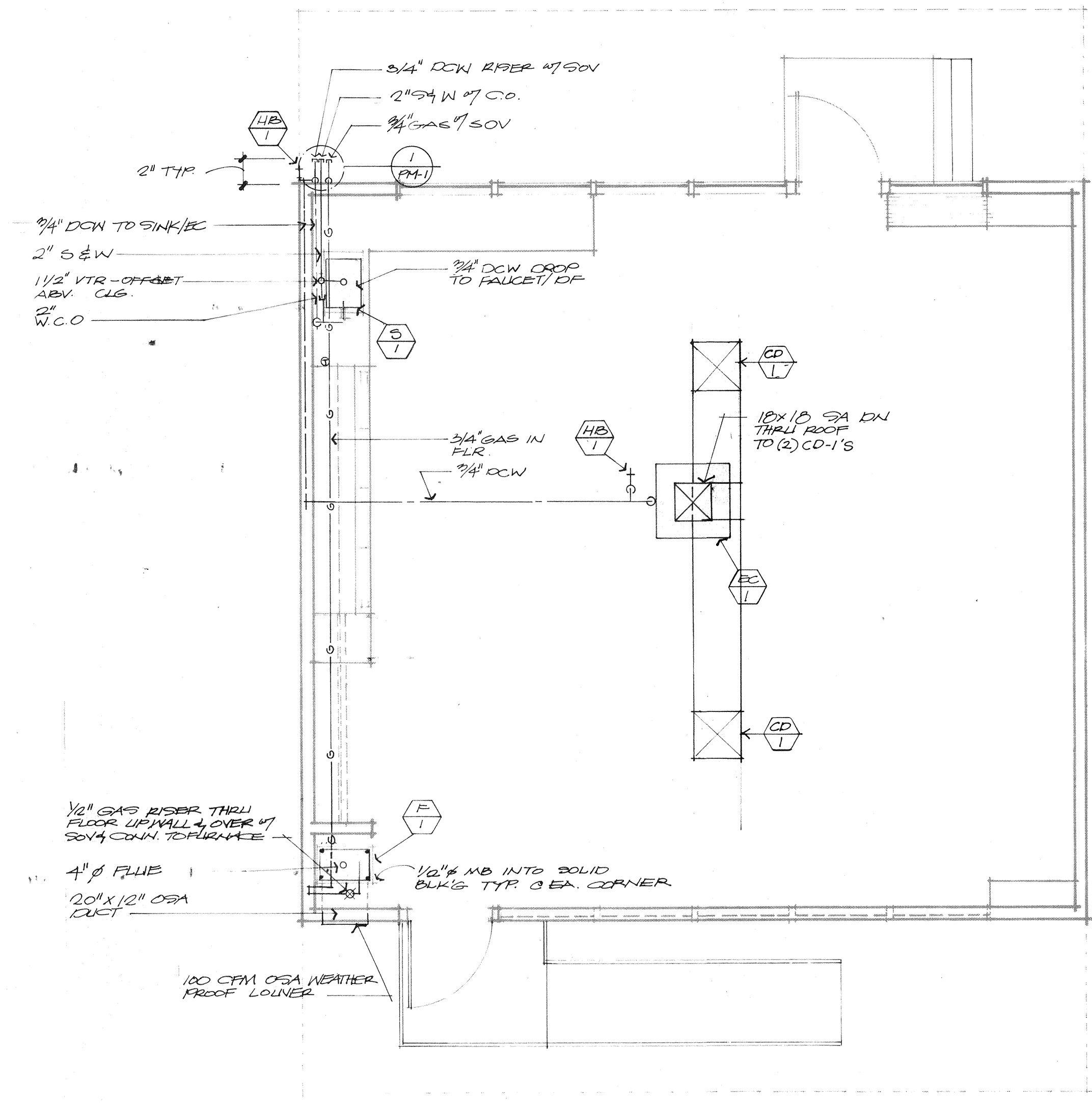
3) TYP. EVAP. COOLER LAYOUT N.T.S.

GENERAL NOTES

SYMBOL	ITEM	ABBR.	SYMBOL	ITEM	ABBR.
---	SOIL WASTE OR DRAIN	S.W.D.	---	STORM DRAIN	S.D.
---	EXISTING SOIL WASTE OR DRAIN	EXISTING	---	WALL CLEAN OUT	W.C.O.
---	DOMESTIC COLD WATER	D.C.W.	---	FLOOR CLEAN OUT	F.C.O.
---	HOT WATER	H.W.	---	CLEAN OUT TO GRADE	C.O.T.G.
---	VENT	V.	---	CHECK VALVE	C.V.
---	GAS	G.	---	GATE VALVE	G.V.
---	FIRE LINE	F.	---	GLOBE VALVE	GL.V.
---	AIR	A.	---	ELBOW UP	---
---	VACUUM	VAC.	---	ELBOW DOWN	---
---	OXYGEN	OX.	---	TEE DOWN	---
---	SHUT OFF VALVE	S.O.V.	---	TEE UP	---
---	CONDENSATE DRAIN	C.D.	---	POINT OF CONNECTION	P.O.C.
---	VENT OVER	V.O.	---	VENT TO ROOF	V.T.R.

MARK	SOIL WASTE	TRAP	VENT	D.C.W.	D.H.W.	MANUFACTURER & MODEL NUMBER	DESCRIPTION
5	2"	1/2	1/2	3/4"	-	HAWS #4210 HAWS #5500	17" X 25" STAINLESS STEEL SELF RIMMING SINK FAUCET - COMPRESSION TYPE
HB	-	-	-	3/4"	-	ACORN # 8121	W/ VACUUM BREAKER
CP	-	-	-	3/4"	-	HAWS #5095 I	BUBBLER FOUNTAIN W/ AUTO STREAM COMPENSATION

MARK	MANUFACTURER	MODEL NO.	DESCRIPTION
EC	ARVIN	EO 430B	1/2 HP (2) SPEED W/ PUMP/FLOAT VALVES 4500 CFM CONDENSATE W/ 4 POSITION SWITCH, 216# OPERATING WT. 1/2 V. 1.0 AMP. 1/8"
FI	ARKLA	#ECON 20-110	VERT FLOW CLASSROOM UNIT HEATER 900 CFM 1/4 HP 1/2 V. 1.0 AMP. 1/2" O.A. 100 CFM LOW VOLT WEATHER PROOF MANUAL MAKE UP DAMPER W/ 4" FIT. FILTER RACK/FILTERS W/ A QUARTICAL LINING W/ FRONT SUTLET TOP DISCHARGE TO 10" C.D. W/ HINGED ACCESS PANEL - 40" O.P. WT. SINGLE STAGE W/ SUMMER SWITCH, SUB-BASE & VANDAL PROOF GUARD
CP	COOLAIR MFG CO.	SERIES 40-10	FOUR-WAY CLG DIFFUSER W/ DAMPER 24" X 24" X 6"



MECHANICAL / PLUMBING PLAN 1/4"

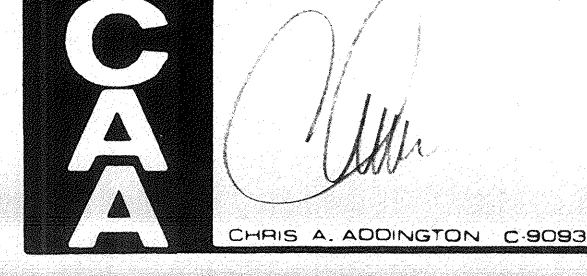
- NOTES
- 1) FOR SITE CONNECTIONS - SEE A-6
 - 2) FIELD VERIFY ALL UTILITIES PRIOR TO SAW-CUTS PAVING/CONC
 - 3) THERE ARE NUMEROUS UNDOCUMENTED MISC. ELEC/TELE/UTILITY U.G. LINES ON THIS SITE USE EXTREME CAUTION ON ALL EXCAVATIONS

THESE DRAWINGS AND SPECIFICATIONS AND IDEAS, DESIGN AND ARRANGEMENTS REPRESENTED THEREIN ARE AND SHALL BE THE PROPERTY OF THE ARCHITECT AND NO PART THEREOF SHALL BE REPRODUCED, COPIED, EITHER WHOLLY OR IN CONNECTION WITH ANY WORK ON THIS PROJECT WITHOUT THE SPECIFIC WRITTEN PERMISSION OF THE ARCHITECT. ANY REPRODUCTION OR TRANSMISSION OF THESE DRAWINGS OR SPECIFICATIONS WITHOUT THE WRITTEN CONSENT OF THE ARCHITECT SHALL BE AT THE USER'S SOLE RISK AND WITHOUT LIABILITY TO THE ARCHITECT.

DATE: 5/10/05
 PRINTS ISSUED FOR: BOARD APPROVAL
 MARK: A
 DATE: 5/10/05
 PRINTS ISSUED FOR: BIDDING
 MARK: B, C, D, E, F, G, H, I, J, K, L, M, N, O, P, Q, R, S

DATE	PRINTS ISSUED FOR	MARK	DATE	REVISIONS	DRAWN R.N.
5/10/05	BOARD APPROVAL	A	6/13/05	OSA CHS/B/REBID	DATE 5/10/05
5/10/05	OSA	B			JOB NO: 05-242-1
7/23/05	BIDDING	C			CHECKED MMS

CHRIS A. ADDINGTON
 ARCHITECT



MECHANICAL PLUMBING PLAN / FIXTURE SCHEDULE / DETAILS / LEGEND

NEW PORTABLE CLASSROOM
 FOR BAKERSFIELD CITY SCHOOL DISTRICT.
 BAKERSFIELD • KERN COUNTY • CALIFORNIA