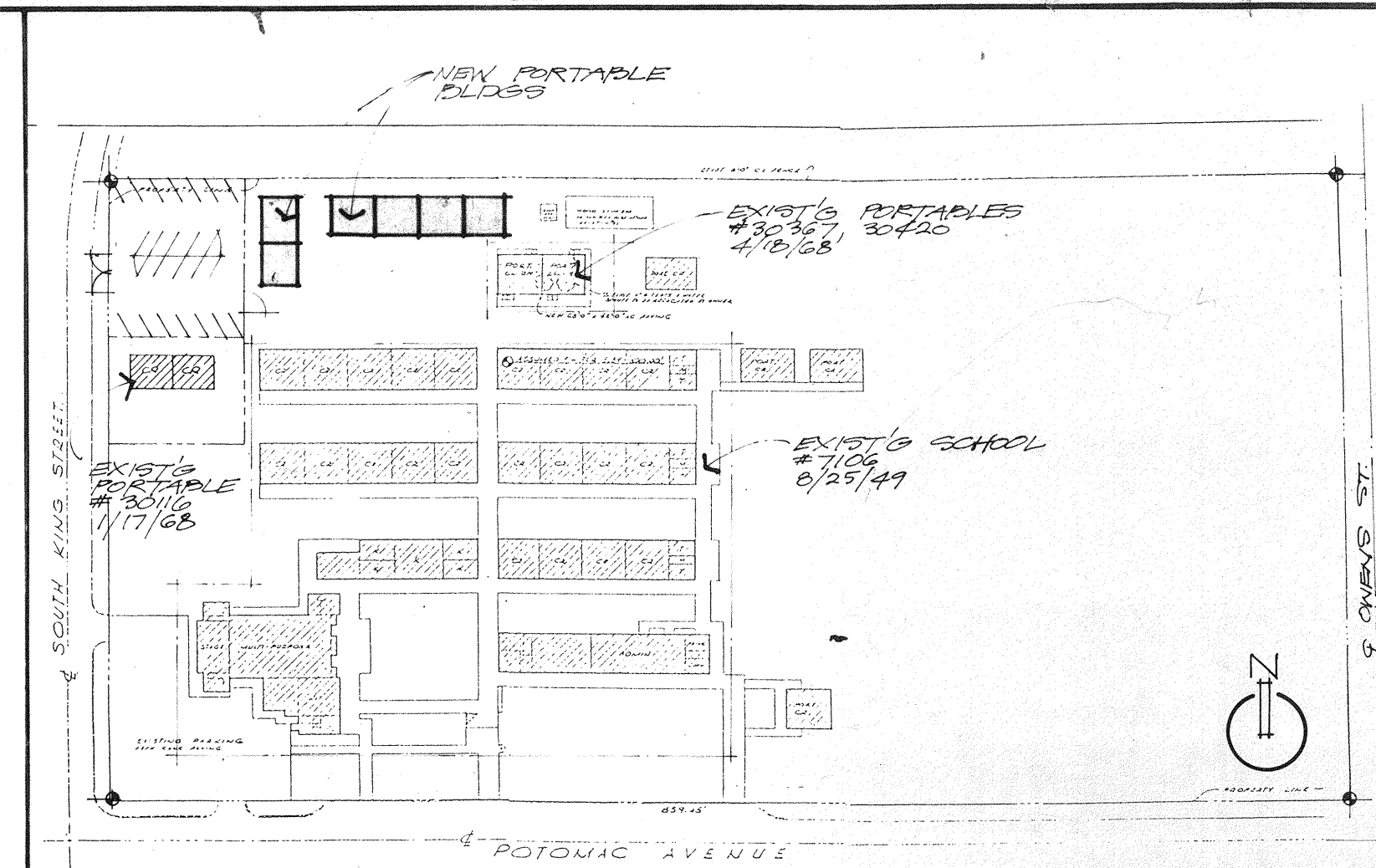


# PORTABLE CLASSROOM

## BAKERSFIELD CITY SCHOOL DISTRICT



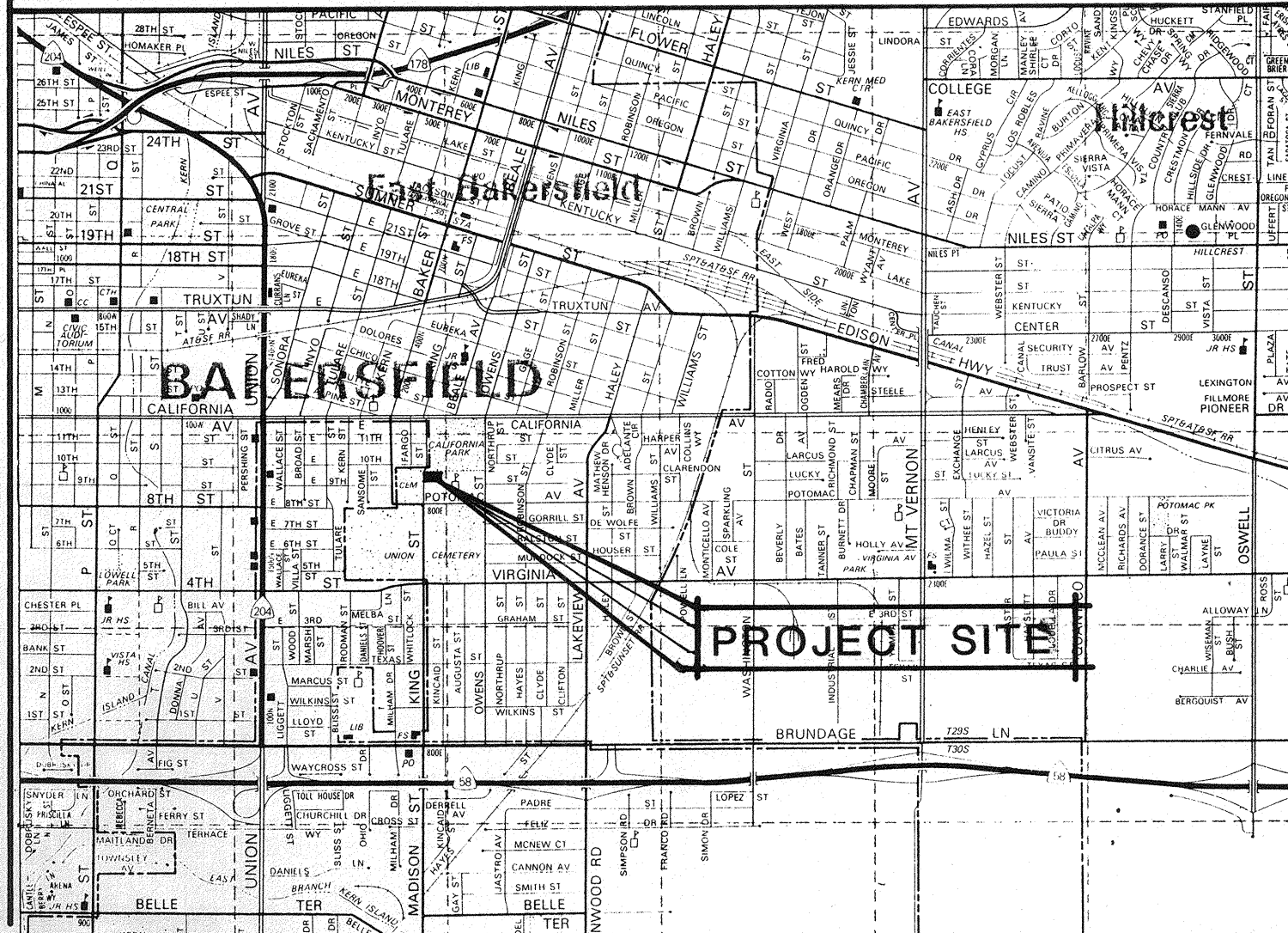
### SHEET INDEX

ARCHITECTURAL	
A-1	SHEET INDEX/SITE DEVELOPMENT PLAN/SITE MAP/VICINITY MAP/DETAILS
A-2	FLOOR PLAN/REFLECTED CEILING PLAN/NOTES/SCHEDULES
A-3	EXTERIOR/INTERIOR ELEVATIONS
A-4	MISCELLANEOUS DETAILS
A-5	MISCELLANEOUS DETAILS
A-6	UTILITY PLAN
A-7	SPECIFICATIONS
A-8	SPECIFICATIONS
A-9	SPECIFICATIONS
STRUCTURAL	
S-1	MISCELLANEOUS STRUCTURAL NOTES & DETAILS
S-2	ROOF/FLOOR FRAMING PLANS/NOTES/DETAILS
S-3	STRUCTURAL SECTIONS/DETAILS
PLUMBING / MECHANICAL	
PM-1	MECHANICAL-PLUMBING PLAN/FIXTURE SCHEDULES/DETAILS/LEGEND
ELECTRICAL	
E-1	ELECTRICAL PLAN/NOTES/SCHEDULES/DETAILS

### LEGEND

SYMBOLS		ABBREVIATIONS	
(A)	COORDINATE LINE	AN	ANCHOR BOLT
(1/22)	BUILDING SECTION NUMBER SHEET NUMBER	APRCH	APPROXIMATE ARCHITECTURAL
(1/AB)	ROOM OR SPACE NUMBER INTERIOR ELEVATION SHIT	BLDG	BUILDING
(1/44)	DETAIL NUMBER SHEET NUMBER	CT	CERAMIC TILE
(ELEVATION)	ELEVATION	CEM	CEMENT
(DOOR)	DOOR NUMBER	CONC	CONCRETE
(2x STUDS)	2x STUDS @ 16" O.C. OR AS NOTED ON PLANS	C.J.	CONTROL JOINT
(N.I.C.)	N.I.C. BY OTHERS	CONT	CONTINUOUS
(GYP BOARD)	GYP BOARD AS NOTED	CONC BLK	CONCRETE BLOCK
(EXIT)	EXIT TYPE INSUL.	DF	DOUGLAS FIR
(INTERIOR ELEVATION)	INTERIOR ELEVATION NUMBER / KEY	DWG	DRAWINGS
		EA	EACH
		EL	ELEVATION
		ELEC	ELECTRICAL
		E.J.	EXPANSION JOINT
		FT	FEET
		FIN	FINISH
		FD	FLOOR DRAIN
		FTG	FOOTING
		FF	FINISH FLOOR
		FG	FINISH GRADE
		GA	GALVE
		GI	GALVANIZED IRON
		GYP BD	GYPSUM BOARD
		HDR	HEADER
		LIM	LIMB
		MESCH	METAL MESH
		MT	METAL THRESHOLD
		MIN	MINIMUM
		MTL	METAL
		M.C.	MASONRY OPENING NOT IN CONTRACT
		N.I.C.	NOT IN CONTRACT ON CENTER(S)
		OC	ON CENTER(S)
		PA	PLANTING AREA
		PLYWD	PLYWOOD
		RFD	ROOF DRAIN
		RS	REDUCED STRIP SPECIFICATIONS
		STRUCT	STRUCTURAL
		TC	TOP CONCRETE
		TS	TOP SHEATHING
		T.W.	TOP WALL
		T.P.	TOP PAVING
		W/O	WITHOUT
		WH	WHERE
		TW	TOP WALK
		TS	TOP OF SLAB
		FL	FLOW LINE
		TC	TOP OF CURB
		W/S	WEATHER STRIP
		(E)	EXISTING
		FF	FACE OF FINISH
		RS	FACE OF STUD
		HAS	HORIZONTAL ALUM. SLIDING
		K'S	KING STUD
		TR	TRIMMER

### VICINITY MAP



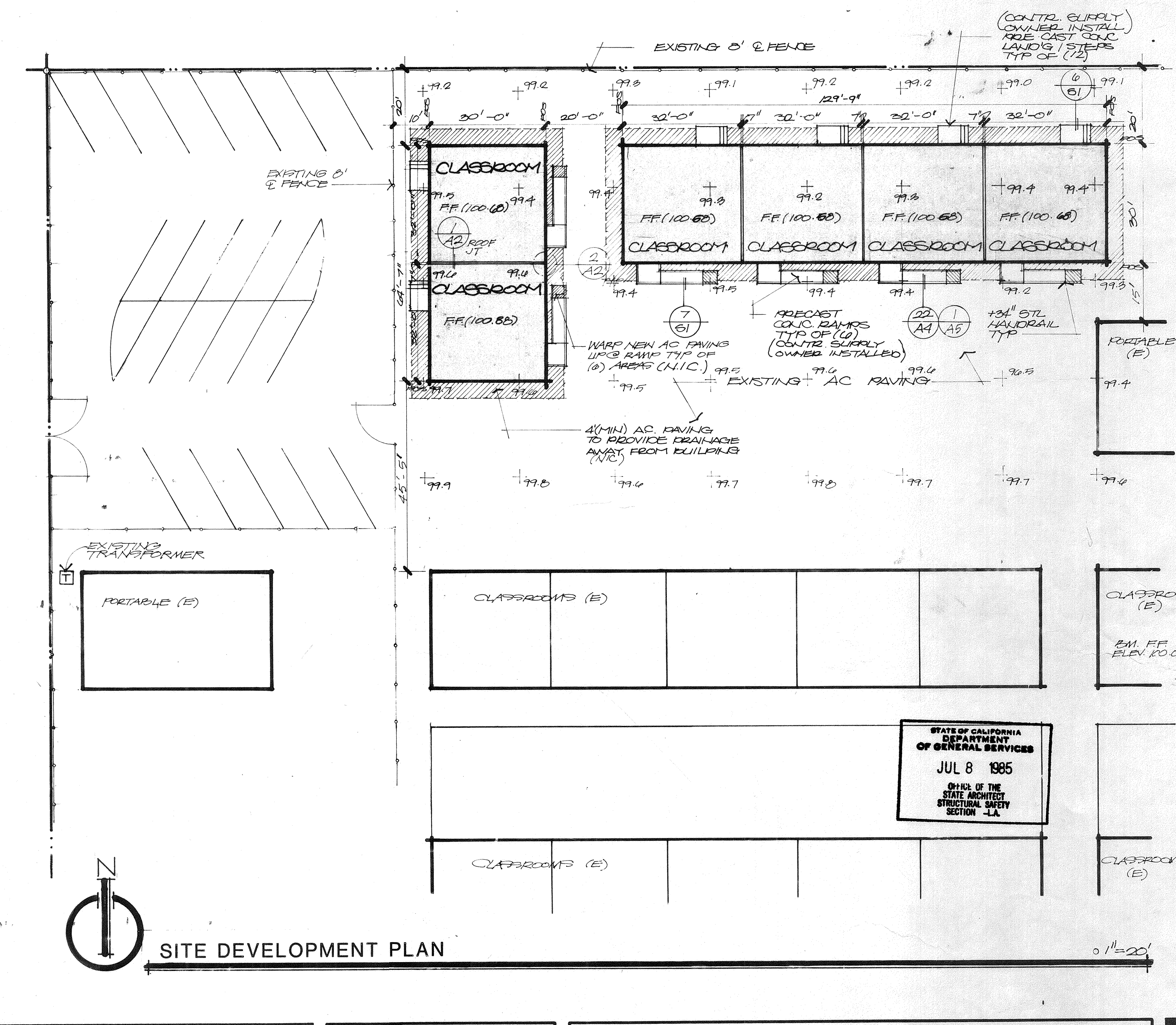
### BUILDING ANALYSIS

AREA	900 SF - 4,000 SF .. OK
CONSTRUCTION TYPE	I-N
OCCUPANCY	E-1
USE	CLASSROOM (PORTABLE)
OCCUPANT LOAD	900 SF - 20 = 45 OCCUPANTS (1) EXIST. REQ'D - (2) PROVIDED .. OK
BASIC ALLOWABLE	8000 SF - 20 = 400 OCCUPANTS MAX. 2 UNITS CAN BE GROUPED W/O YARD INCREASES
SPRINKLERED	NO
CODE	TITLE 24, 21, 19. C.A.C.

Bakersfield City School District  
Associate Superintendent

APPROVED BY \_\_\_\_\_ DATE \_\_\_\_\_ APPROVED BY \_\_\_\_\_ DATE \_\_\_\_\_ APPROVED BY \_\_\_\_\_ DATE \_\_\_\_\_

- NOTES!!**
- CONTRACTOR SHALL BUILD RELOCATABLE CLASSROOM BUILDINGS @ BAKERSFIELD CITY SCHOOL MAINTENANCE SHOP @ 1501 FELIZ AVENUE. VERIFY W/ ROO SUPERVISOR (327-5311) EXACT LOCATION & PROCEDURES.
  - CONTRACTOR SHALL PROVIDE ALL TEMPORARY UTILITIES, ETC PER SPECS.
  - ALL SITE WORK SHALL BE DONE BY BAKERSFIELD CITY SCHOOL PERSONNEL.
  - ALL SITE RELATED ITEMS FOR COMPLETE BLDG SHALL BE FURNISHED BY CONTRACTOR & INSTALLED BY BCSD PERSONNEL IE; RAMPS/STOOPS/CLOSURE TRIM ETC.
  - BCSD SHALL MOVE BUILDINGS, RAMPS, ETC TO SCHOOL SITE FROM CONSTRUCTION LOCATION.



THESE DRAWINGS AND SPECIFICATIONS AND IDEAS, DESIGN AND ARRANGEMENTS HEREBY SET FORTH ARE THE PROPERTY OF THE ARCHITECT AND NO PART THEREOF SHALL BE COPIED, REPRODUCED OR USED IN CONNECTION WITH ANY PROJECT OTHER THAN THE SPECIFIC PROJECT FOR WHICH THEY HAVE BEEN PREPARED AND WITHOUT THE WRITTEN CONSENT OF THE ARCHITECT. ANY SUCH REPRODUCTION OR USE WITHOUT THE WRITTEN CONSENT OF THE ARCHITECT SHALL CONSTITUTE A VIOLATION OF THE ARCHITECT'S PROFESSIONAL ETHICS AND SHALL BE SUBJECT TO LEGAL ACTION.

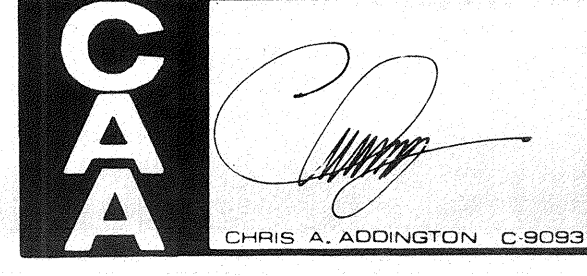
WRITTEN DIMENSIONS ON THESE DRAWINGS SHALL TAKE PRECEDENCE OVER ALL OTHER DIMENSIONS. CONTRACTOR SHALL BE RESPONSIBLE FOR ALL DIMENSIONS AND CONDITIONS ON THE JOB AND THIS OFFICE WILL BE NOTIFIED OF ANY VARIATIONS FROM THE DRAWINGS AND CONDITIONS BY THE CONTRACTOR. SUCH NOTIFICATION MUST BE SUBMITTED TO THIS OFFICE FOR APPROVAL BEFORE PROCEEDING WITH FABRICATION.

CHECK LIST	DATE	BY	CHECK
HANDICAP CHECK	5/23/85	MMS	
AREA ANALYSIS / LAND USE	5/23/85	MMS	
EXITING DESIGN	5/23/85	MMS	

DATE	PRINTS ISSUED FOR:	MARK	DATE	REVISIONS	DRAWN	DATE
5/10/85	BOAED APPROVAL	A	5/13/85	CCA CHANGES, REBID	HEWLEY	5/10/85
5/20/85	CSA	B				
5/23/85	BIDDING	C				
		D				
		E				

DATE	REVISIONS	DRAWN	DATE
5/10/85	CCA CHANGES, REBID	HEWLEY	5/10/85

DATE	REVISIONS	DRAWN	DATE
5/10/85	CCA CHANGES, REBID	HEWLEY	5/10/85



SHEET INDEX / SITE DEVELOPMENT PLAN / SITE MAP / VICINITY MAP

NEW PORTABLE CLASSROOM FOR BAKERSFIELD CITY SCHOOL DISTRICT. BAKERSFIELD • KERN COUNTY • CALIFORNIA

**CHRIS A. ADDINGTON & ASSOCIATES**  
 A.I.A. ARCHITECTS 3434 TRUXTUN AVE. SUITE 240 BAKERSFIELD, CALIF. 93301/805-327-1690