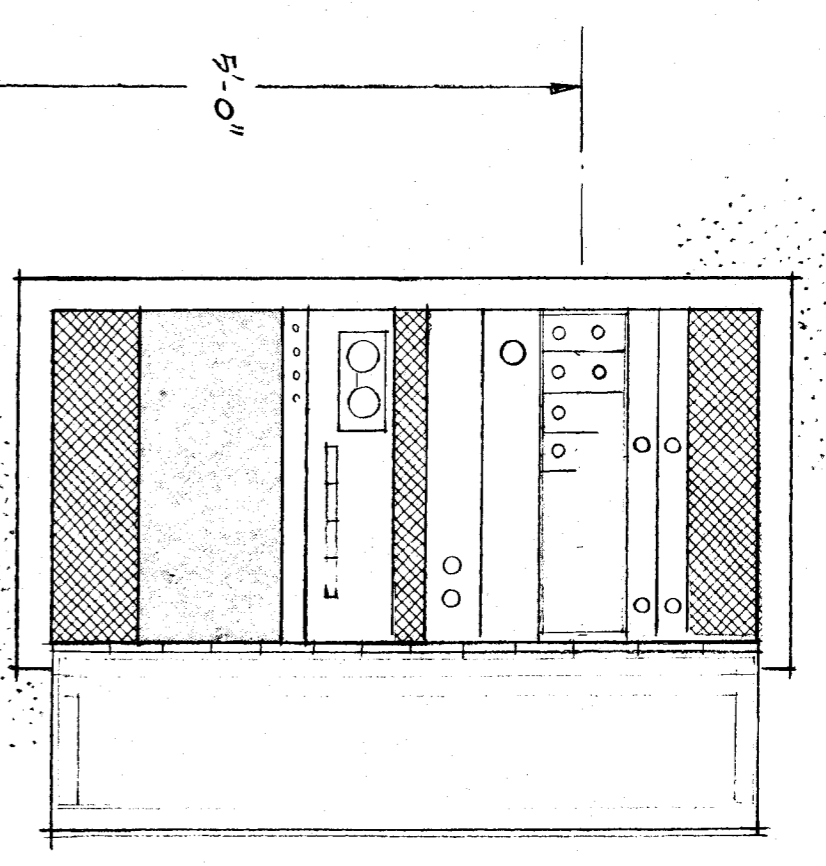


side elevation

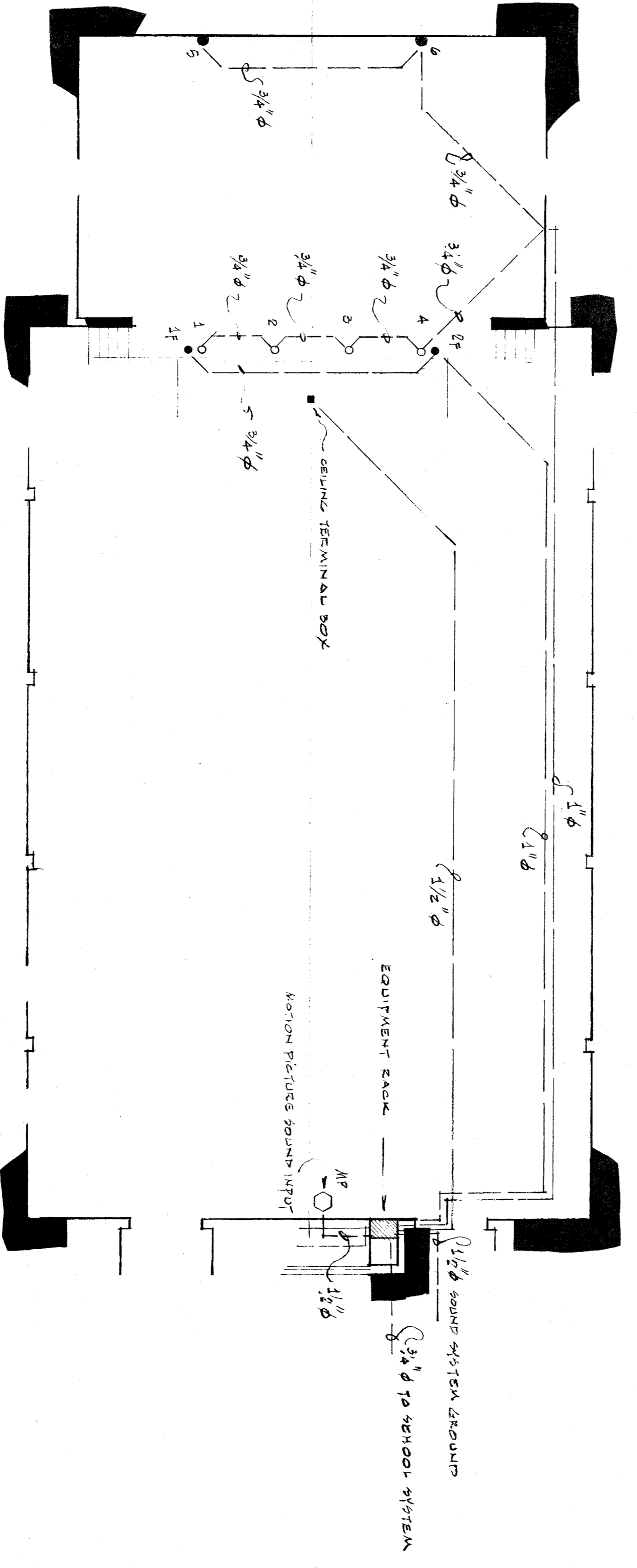
front elevation

CENTRAL LOUDSPEAKER CLUSTER 1/2"=1'-0"

SUGGESTED EQUIPMENT RACK LAYOUT 1"=1'-0"

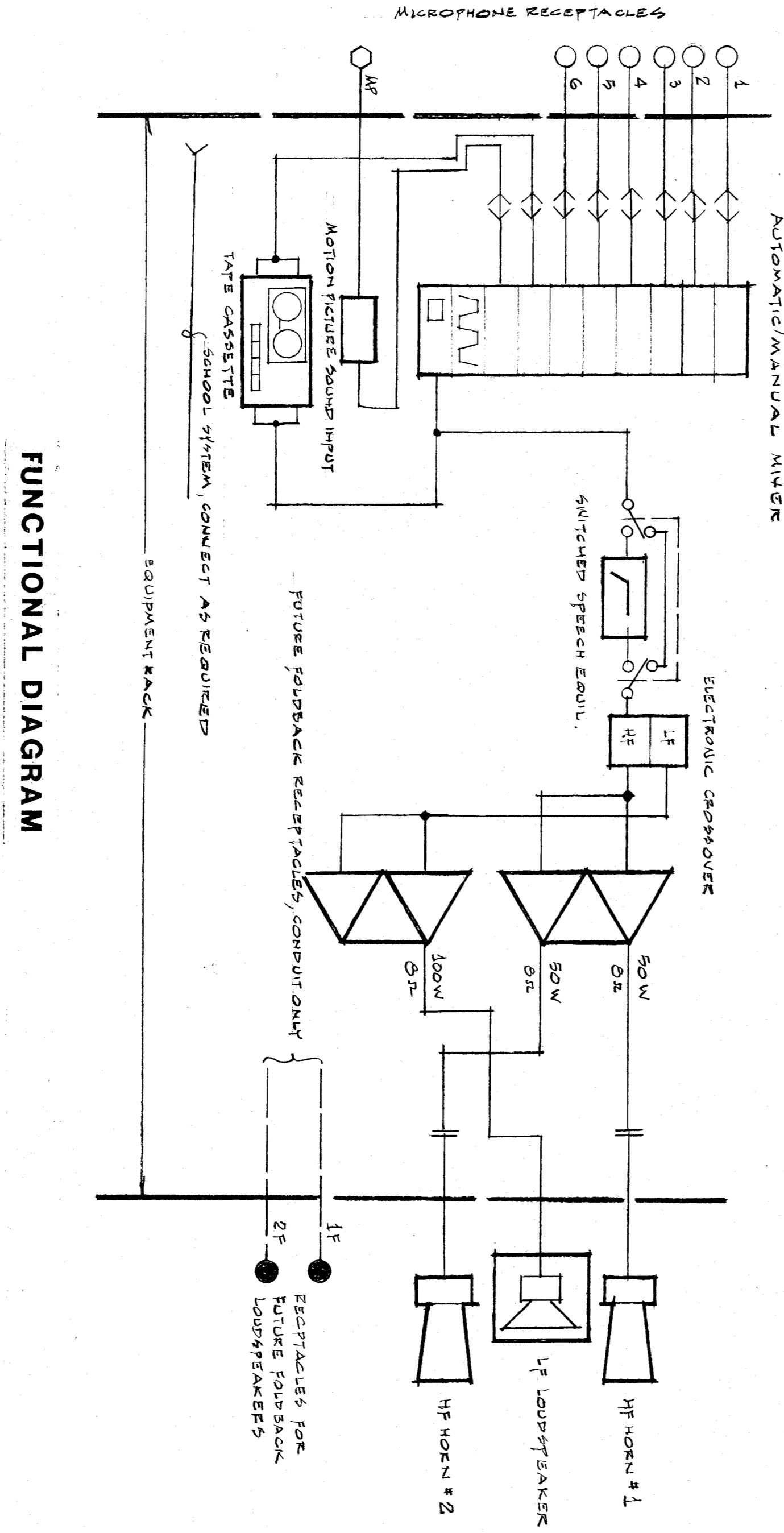


plan looking down



MULTI-PURPOSE PLAN 1/8"=1'-0"

- CEILING MOUNTED TERMINAL BOX
- FLOOR MOUNTED MICROPHONE RECEPTACLE, SOUNDPOUR INC. MRB
- FLOOR MOUNTED FOLDBACK LOUDSPEAKER RECEPTACLE, SOUNDPOUR INC. MRB
- WALL MOUNTED MICROPHONE RECEPTACLE
- MOTION PICTURES SOUND INPUT, SOUNDPOUR INC. MRB



FUNCTIONAL DIAGRAM

THESE DRAWINGS, RELATED SPECIFICATIONS, IDEAS, DESIGNS, AND ARRANGEMENTS REPRESENTED THEREBY ARE AND SHALL REMAIN THE PROPERTY OF THE ARCHITECT; AND NO PART THEREOF SHALL BE COPIED, DISCLOSED TO OTHERS OR USED IN CONNECTION WITH ANY WORK OR PROJECT OTHER THAN THE SPECIFIC PROJECT FOR WHICH THEY HAVE BEEN PREPARED AND DEVELOPED WITHOUT THE WRITTEN CONSENT OF THE ARCHITECT. VISUAL CONTACT WITH THESE DRAWINGS OR SPECIFICATIONS SHALL CONSTITUTE CONCLUSIVE EVIDENCE OF ACCEPTANCE OF THESE RESTRICTIONS.

WRITTEN DIMENSIONS ON THESE DRAWINGS SHALL HAVE PRECEDENCE OVER SCALED DIMENSIONS; CONTRACTORS SHALL VERIFY AND BE RESPONSIBLE FOR ALL DIMENSIONS AND CONDITIONS ON THE JOB AND THIS OFFICE MUST BE NOTIFIED OF ANY VARIATIONS FROM THE DIMENSIONS AND CONDITIONS SHOWN BY THESE DRAWINGS.

DETAILED SHOP DRAWINGS MUST BE SUBMITTED TO THIS OFFICE FOR REVIEW BEFORE PROCEEDING WITH THE FABRICATION OF ANY PRODUCT TO BE INCLUDED IN THIS PROJECT.

DATE	ISSUE FOR
DATE	REVISION

Bessie E. Owens Elementary School Modernization
Bakersfield City School District

pechin associates aia
1400 easton drive suite 138
bakersfield, ca 93309 (805) 322-2021

Harrold C. Pechin

C-8366

SS

SHEET

Project Number: 433-0788

Revision Date: