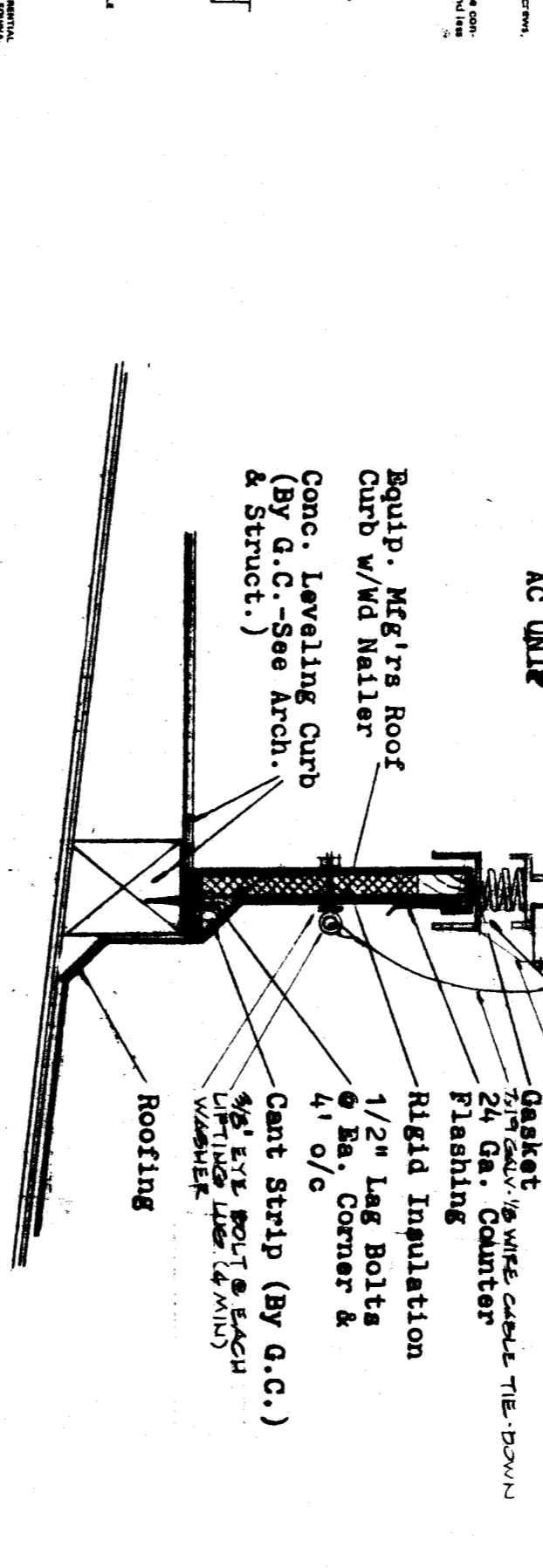
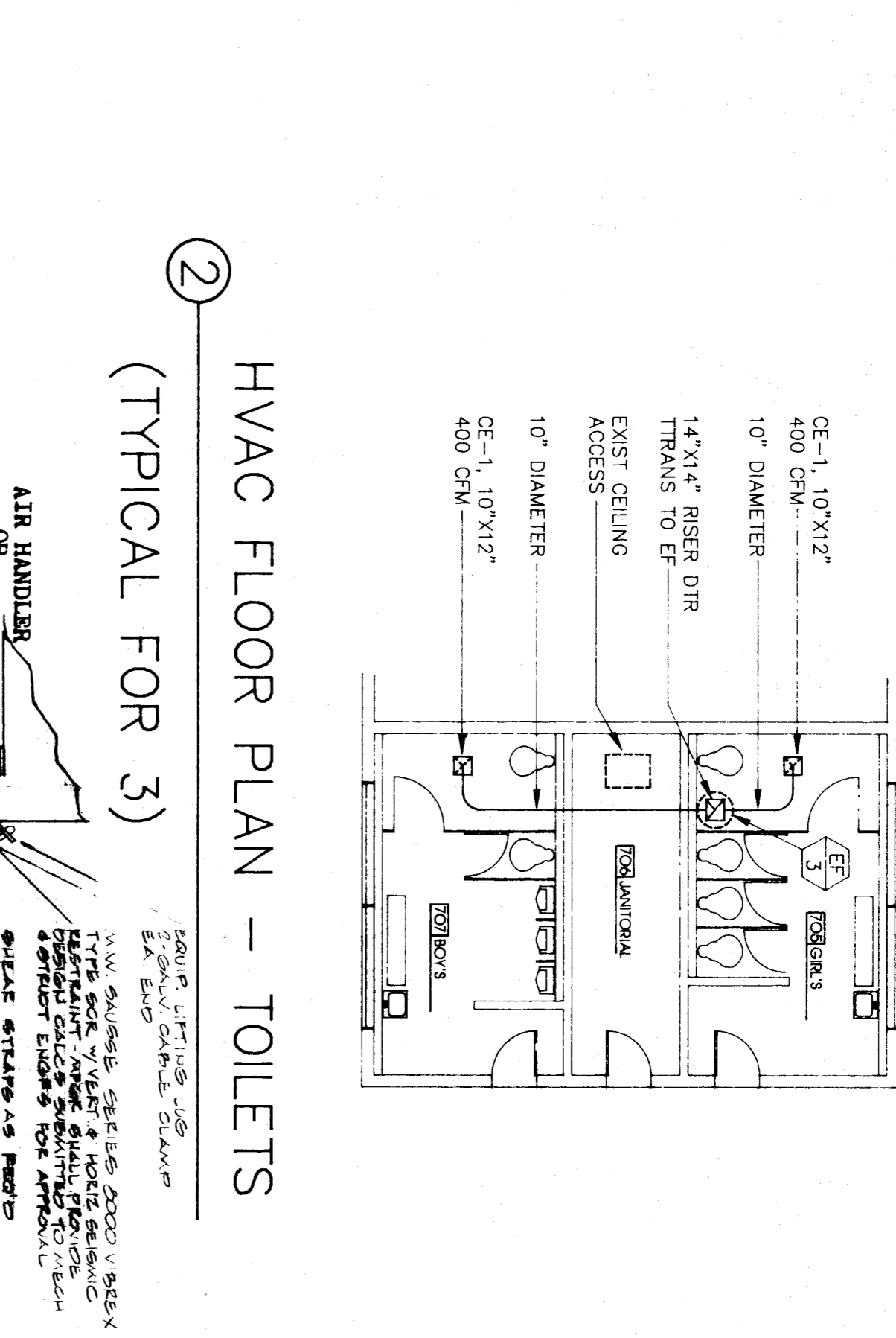
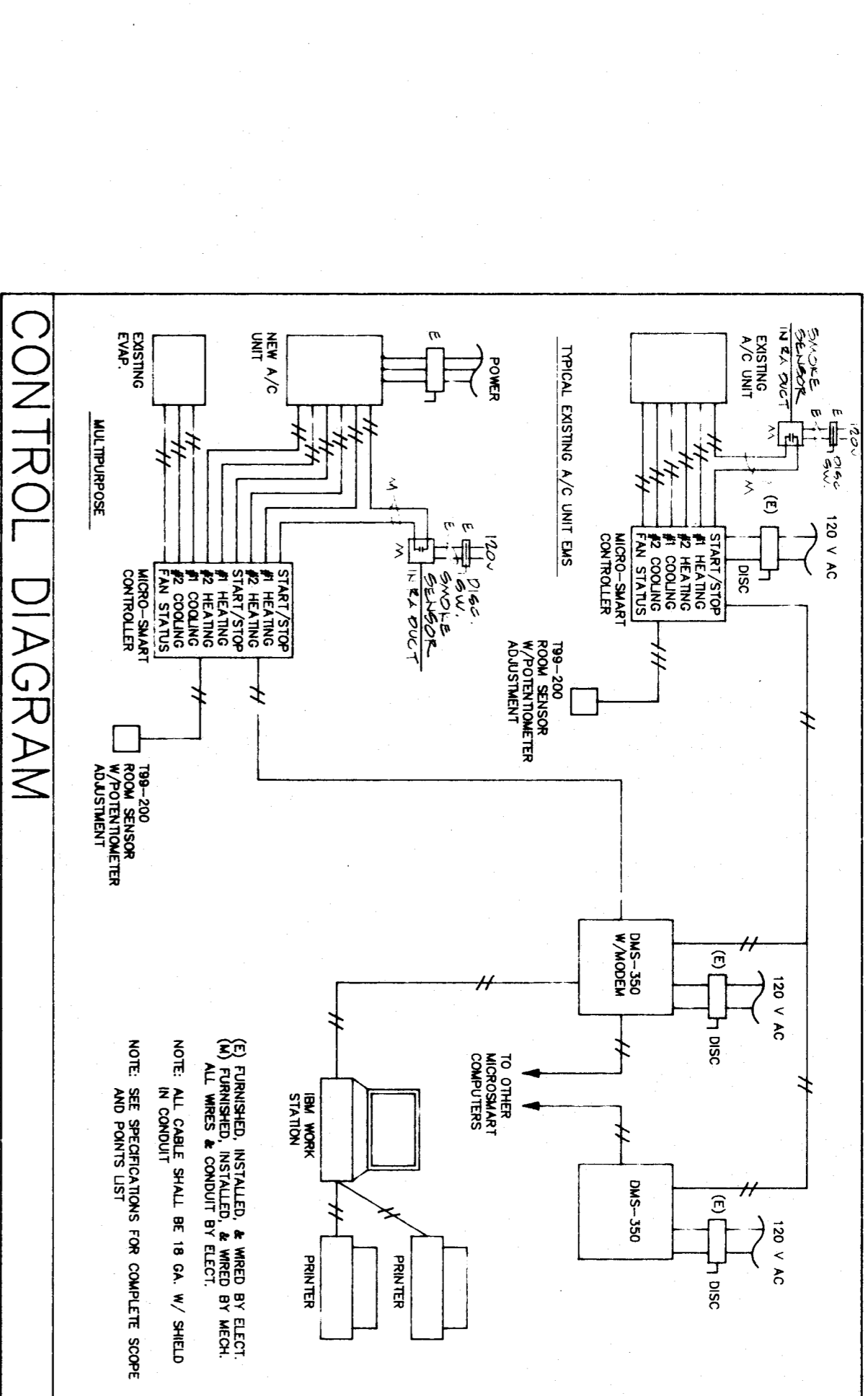
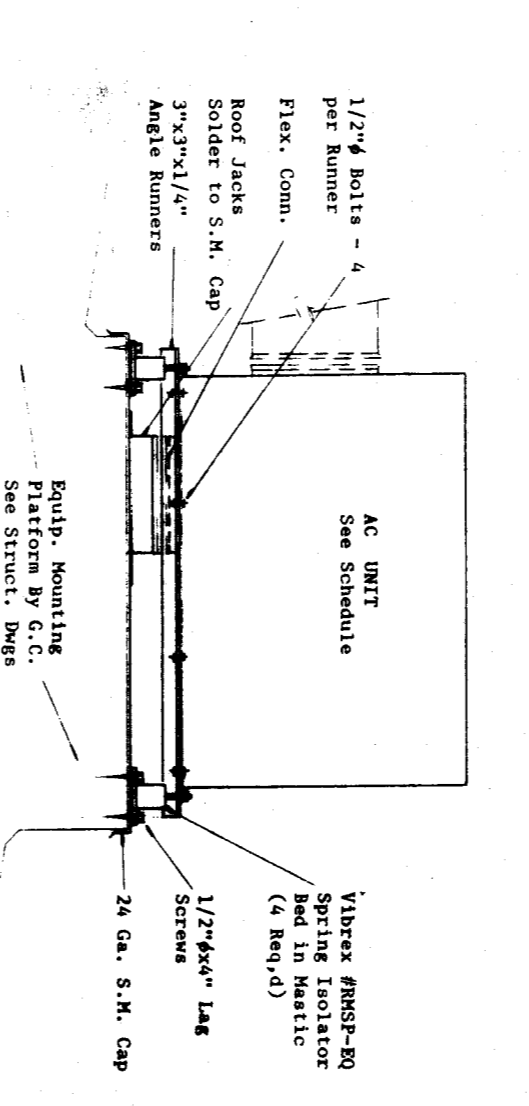
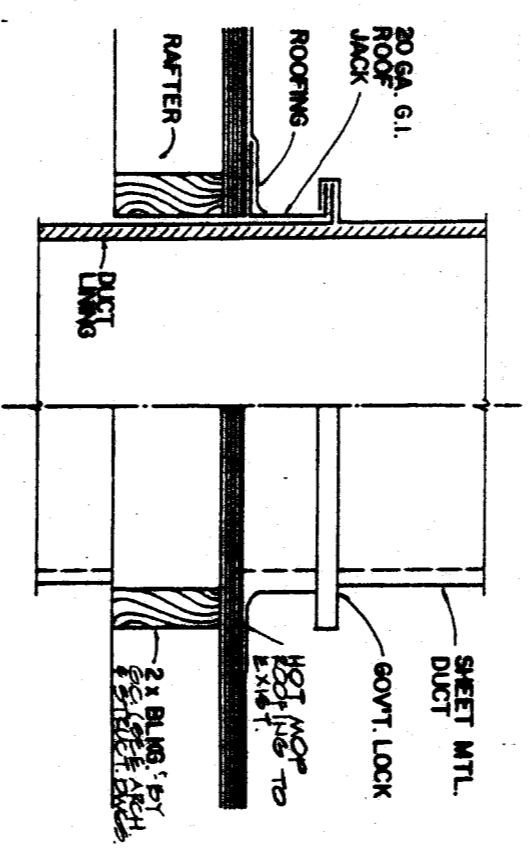


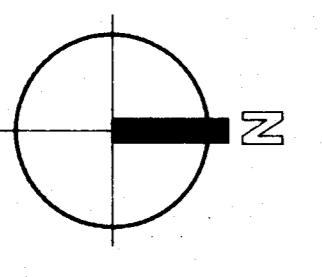
MARK	MANUFACTURER, MODEL NUMBER, AND DESCRIPTION
AC/1/A AC/1/B AC/2/B	CARRIER #48BR016 ROOF MOUNTED HTG/CLG UNIT, 4500 CFM @ 6" E.S.P., 2 HP, 164.0 MBH TOTAL & 113.0 MBH SENSIBLE ①05 DEGREES F.M.B. & 67 DEGREES F.M.B., 115,500 BTUH INPUT & 183,000 BTUH OUTPUT, 4.5" T.D.A. @ 4.0 VOLTS/50 1900 LBS.-MOD. ECONOMIZER, SLOPED FACTORY CURB.
AC/1/A AC/2/B	CARRIER #48DD006-501 ROOF MOUNTED HTG/CLG UNIT, 2000 CFM @ 5 E.S.P., 58.6 MBH TOTAL & 45.9 MBH SENSIBLE ①05 DEGREES F.M.B. & 67 DEGREES F.M.B., 74,000 BTUH INPUT & 58,460 BTUH OUTPUT, 4.5" T.D.A. @ 4.0 VOLTS/50 700 LBS.-MOD. ECONOMIZER, SLOPED FACTORY CURB.
EF/1	COOK #ACEB100C2B ROOF EXHAUST FAN, 700 CFM @ .25" SP, 1/6 HP, 120 VOLTS, FACTORY SLOPED CURB, B.S., B.D.D., 50 LBS.
EF/2	COOK #ACEB100C2B ROOF EXHAUST FAN, 450 CFM @ .25" SP, 1/6 HP, 120 VOLTS, FACTORY SLOPED CURB, B.S., B.D.D., 50 LBS.
EF/3	COOK #ACEB100C2B ROOF EXHAUST FAN, 800 CFM @ .25" SP, 1/6 HP, 120 VOLTS, FACTORY SLOPED CURB, B.S., B.D.D., 50 LBS.
EF/4	COOK #ACEB100C2B ROOF EXHAUST FAN, 670 CFM @ .25" SP, 1/6 HP, 120 VOLTS, FACTORY SLOPED CURB, B.S., B.D.D., 50 LBS.
EF/5	COOK #ACB115 CEILING MOUNTED EXHAUST FAN, 110 CFM @ .2" SP, 35 WATTS HP, 120 VOLTS, B.D.D.



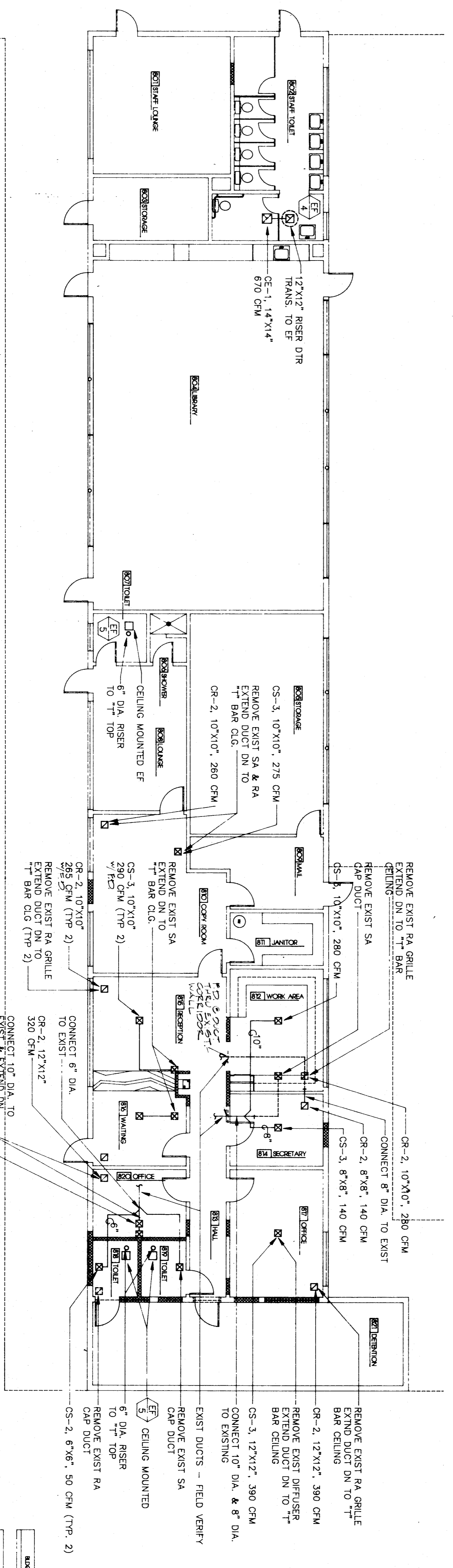
④ DUCT THRU ROOF

⑤ AC UNIT MOUNTING DETAIL - AC/2&B

③ AC UNIT MOUNTING DETAIL - AC/1&B



BUILDING H



NOTE:
COORDINATE REGISTER LOCATION W/
TO BAR CLG & LIGHTING LAYOUT
SEE ARCHITECTURAL DRAWINGS



pechin associates aia
1400 easton drive bakersfield, california, 93309
suite 138 (805) 322-2021

BESSIE E. OWENS SCHOOL
MODERNIZATION
BAKERSFIELD CITY SCHOOL DISTRICT

DATE	ISSUED FOR
DATE	REVISION

THESE DRAWINGS, RELATED SPECIFICATIONS, IDEAS, DESIGNS, AND ARRANGEMENTS REPRESENTED THEREIN ARE AND SHALL REMAIN THE PROPERTY OF THE ARCHITECT; AND NO PART THEREOF SHALL BE COPIED, DISCLOSED TO OTHERS OR USED IN CONNECTION WITH ANY WORK OR PROJECT OTHER THAN THE SPECIFIC PROJECT FOR WHICH THEY HAVE BEEN PREPARED AND DEVELOPED WITHOUT THE WRITTEN CONSENT OF THE ARCHITECT. VISUAL CONTACT WITH THESE DRAWINGS OR SPECIFICATIONS SHALL CONSTITUTE CONCLUSIVE EVIDENCE OF ACCEPTANCE OF THESE RESTRICTIONS.

WRITTEN DIMENSIONS ON THESE DRAWINGS SHALL HAVE PRECEDENCE OVER SCALED DIMENSIONS; CONTRACTORS SHALL VERIFY AND BE RESPONSIBLE FOR ALL DIMENSIONS AND CONDITIONS ON THE JOB AND THIS OFFICE MUST BE NOTIFIED OF ANY VARIATIONS FROM THE DIMENSIONS AND CONDITIONS SHOWN BY THESE DRAWINGS.

DETAILED SHOP DRAWINGS MUST BE SUBMITTED TO THIS OFFICE FOR REVIEW BEFORE PROCEEDING WITH THE FABRICATION OF ANY PRODUCT TO BE INCLUDED IN THIS PROJECT.