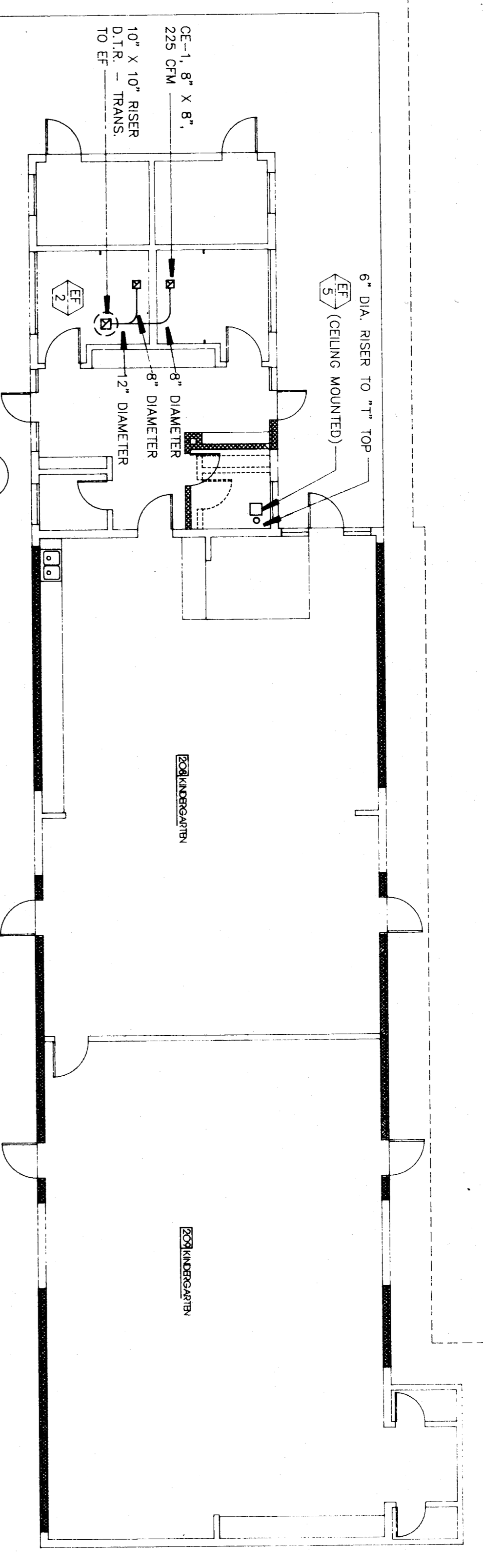
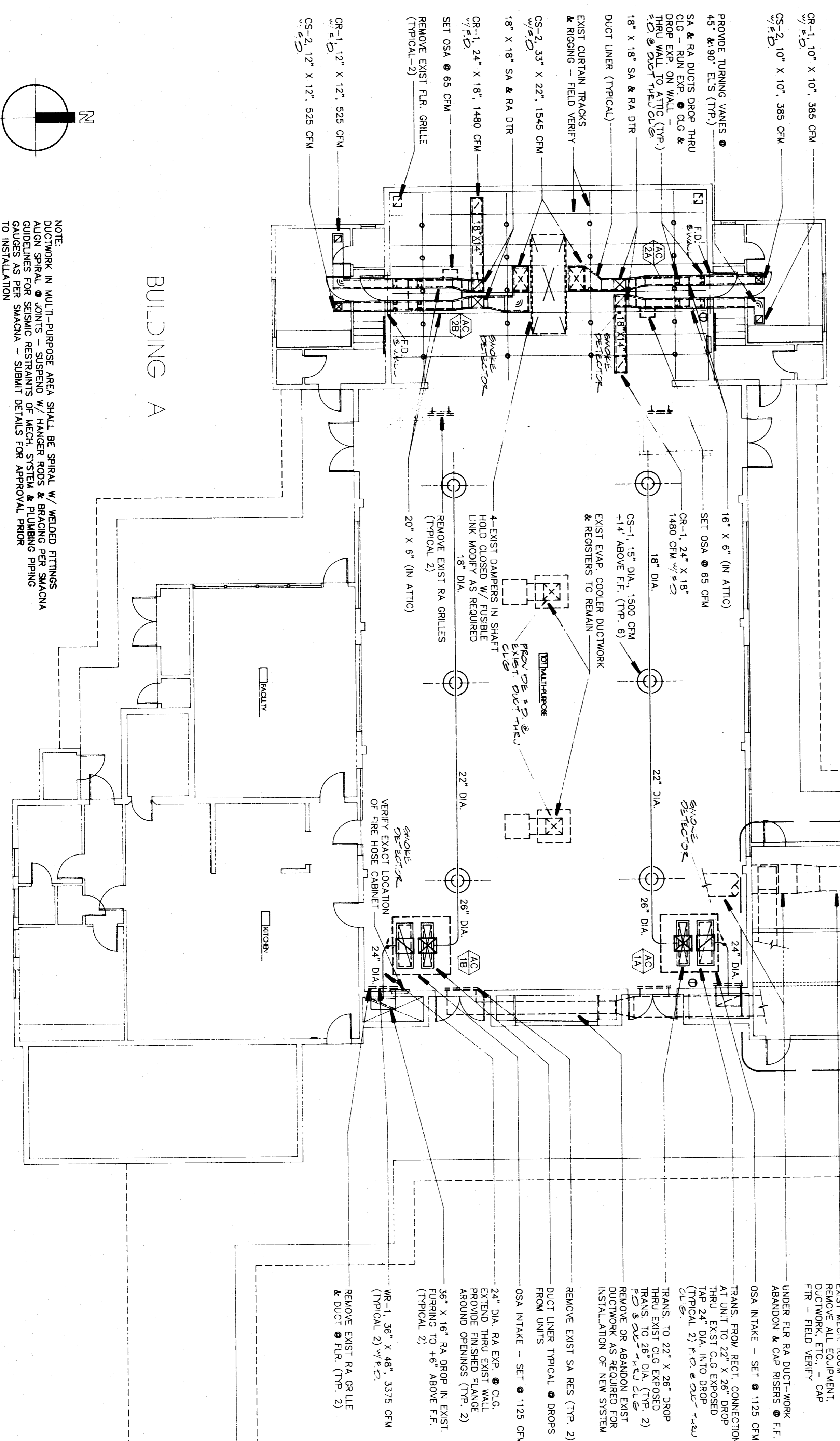


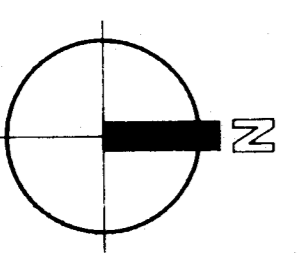
2 PARTIAL HVAC FLOOR PLAN - TOILETS



BUILDING B



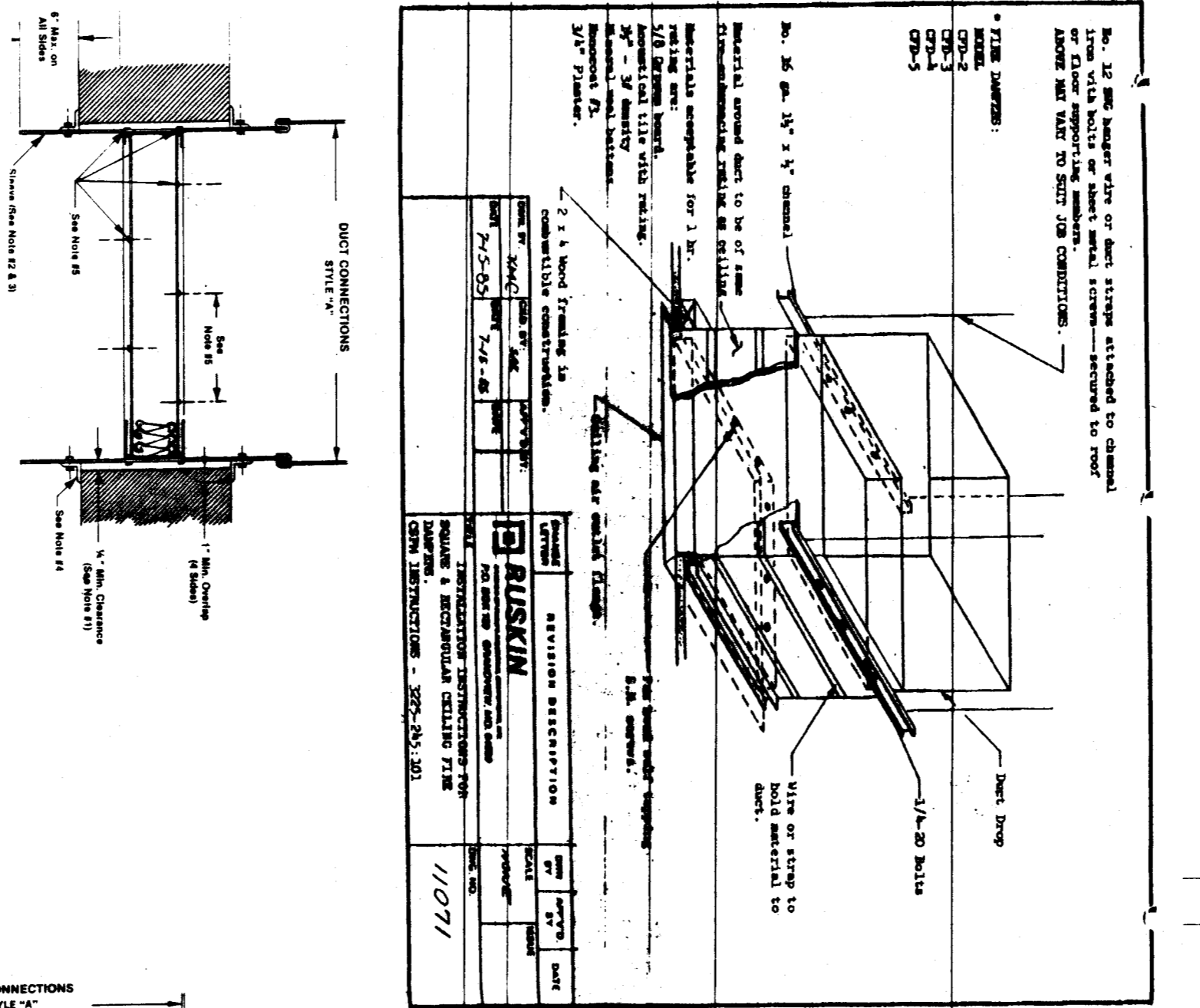
BUILDING A



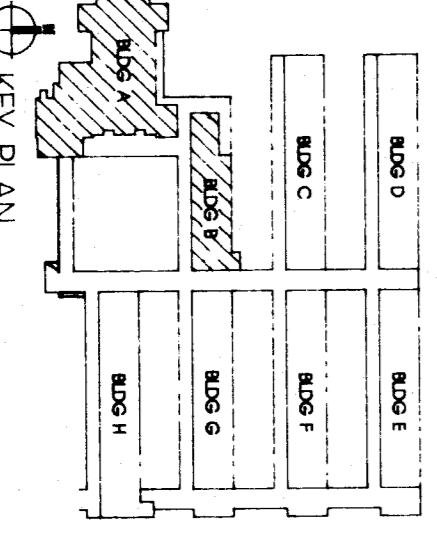
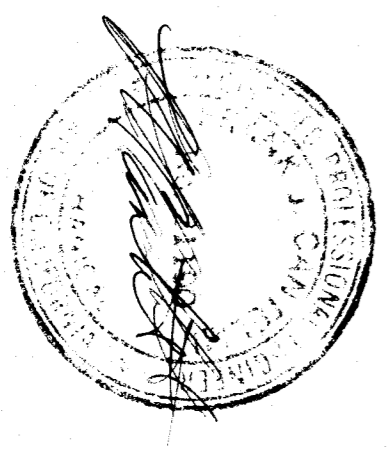
NOTE:
DUCTWORK IN MULTI-PURPOSE AREA SHALL BE SPIRAL W/ WELDED FITTINGS
ALIGN SPIRAL JOINTS TO CHANGE ROOMS & BRACING PER SMACNA
GUIDELINES PER SMACNA - SUBMIT DETAILS FOR APPROVAL PRIOR
TO INSTALLATION

1 HVAC FLOOR PLAN - MULTI PURPOSE BUILDING

EXIST MECH. ROOM
REMOVE ALL EQUIPMENT,
DUCTWORK, ETC. - CAP
FTR - FIELD VERIFY
UNDER FTR RA DUCTWORK
ABANDON & CAP RISERS @ F.F.
OSA INTAKE - SET @ 1125 CFM
TRANS. FROM RECT. CONNECTION
AT UNIT TO 22" X 28" DROP
THRU EXIST GIG EXPOSED
THRU 24" DIA. DROP
(TYPICAL 2) @ 225 CFM
TRANS. TO 22" X 28" DROP
THRU EXIST GIG EXPOSED
THRU 24" DIA. DROP
(TYPICAL 2) @ 225 CFM
REMOVE OR ABANDON EXIST
DUCTWORK AS REQUIRED FOR
INSTALLATION OF NEW SYSTEM
REMOVE EXIST SA RES (TYP. 2)
DUCT LINER TYPICAL @ DROPS
FROM UNITS
OSA INTAKE - SET @ 1125 CFM
24" DIA. RA EXP. @ C.G.
EXTEND THRU EXIST WALL
PROVIDE FINISHED FLANGE
AROUND OPENINGS (TYP. 2)
36" X 18" RA DROP IN EXIST
BRAND @ +8' ABOVE F.F.
(TYPICAL 2)
WR-1, 36" X 48", 3375 CFM
REMOVE EXIST RA GRILLE
& DUCT @ FTR (TYP. 2)



FIRE DAMPER DETAILS



1/8" = 1'-0"

PROJECT M 2 413-0788	SHEET M 2	 1400 easton drive bakersfield, california, 93309 (805) 322-2021	BESSIE E. OWENS SCHOOL MODERNIZATION BAKERSFIELD CITY SCHOOL DISTRICT		DATE ISSUED FOR
			DATE REVISION	THESE DRAWINGS, RELATED SPECIFICATIONS, IDEAS, DESIGNS, AND ARRANGEMENTS REPRESENTED THEREBY ARE AND SHALL REMAIN THE PROPERTY OF THE ARCHITECT; AND NO PART THEREOF SHALL BE COPIED, DISCLOSED TO OTHERS OR USED IN CONNECTION WITH ANY WORK OR PROJECT OTHER THAN THE SPECIFIC PROJECT FOR WHICH THEY HAVE BEEN PREPARED AND DEVELOPED WITHOUT THE WRITTEN CONSENT OF THE ARCHITECT. VISUAL CONTACT WITH THESE DRAWINGS OR SPECIFICATIONS SHALL CONSTITUTE CONCLUSIVE EVIDENCE OF ACCEPTANCE OF THESE RESTRICTIONS. WRITTEN DIMENSIONS ON THESE DRAWINGS SHALL HAVE PRECEDENCE OVER SCALED DIMENSIONS; CONTRACTORS SHALL VERIFY AND BE RESPONSIBLE FOR ALL DIMENSIONS AND CONDITIONS ON THE JOB AND THIS OFFICE MUST BE NOTIFIED OF ANY VARIATIONS FROM THE DIMENSIONS AND CONDITIONS SHOWN BY THESE DRAWINGS. DETAILED SHOP DRAWINGS MUST BE SUBMITTED TO THIS OFFICE FOR REVIEW BEFORE PROCEEDING WITH THE FABRICATION OF ANY PRODUCT TO BE INCLUDED IN THIS PROJECT.	