

KEY NOTES

- 2.119 REMOVE (E) LIGHT FIXTURES; SEE 02072
- (E) DABBERY TRACE TO REMAIN
- 2.149 REMOVE (E) DAMAGED ACOUSTICAL PANELS
- 9.111 (E) REMOVE TO BE PAINTED 09900
- 9.114 (E) SUSPEND ACOUSTICAL PANELS AS 09511
- 9.115 (E) REMOVE ACOUSTICAL PANELS AS 09511
- 9.117 (E) REMOVE (E) 09900
- 16.110 2" X 4" LIGHT FIXTURES; SEE 16200 ELECTRICAL PLANS

NOTES

PROVIDE ADDITIONAL T-BAR GRIDS TO MATCH (E) AS REQUIRED TO INSTALL LIGHT FIXTURES AS INDICATED

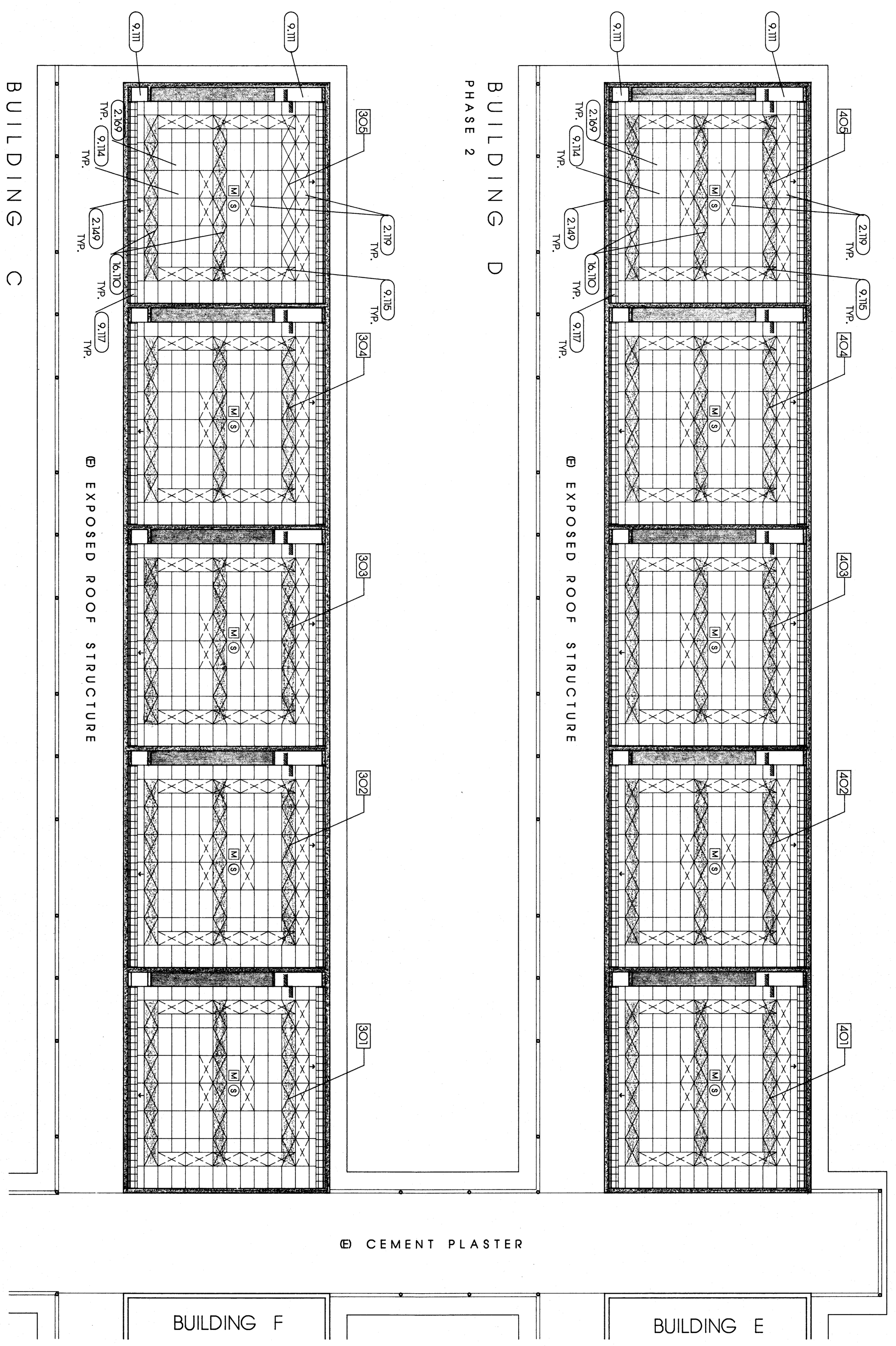
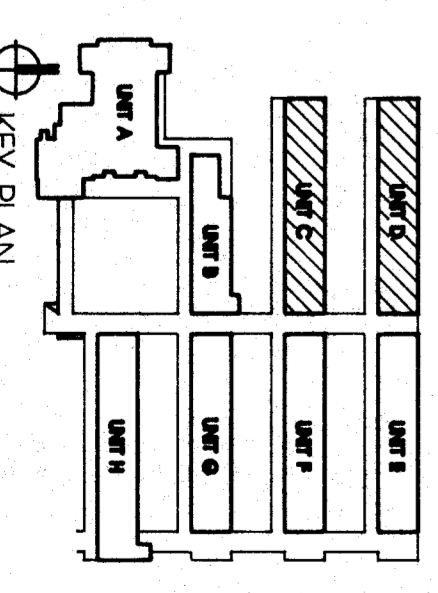
PROVIDE ADDITIONAL T-BAR GRIDS TO MATCH (E) AS REQUIRED TO MAINTAIN A CONTINUOUS GRID SYSTEM AND PROVIDE FOR THE INSTALLATION OF ADDITIONAL ACOUSTICAL PANELS.

SAVAGE (E) ACOUSTICAL PANELS & DETERMINE TO BE ACCEPTABLE FOR REINSTALLATION AND REINSTALL IN ABANDONED LIGHT FIXTURE LOCATIONS. PROVIDE ADDITIONAL ACOUSTICAL PANELS TO MATCH (E) AS REQUIRED TO PROVIDE COMPLETED CEILING ASSEMBLY.

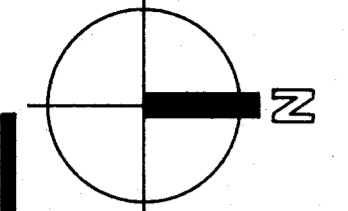
CONTRACTOR SHALL VERIFY ALL (E) MECH. REGISTER & GRILLE LOCATIONS IN (E) T-BAR CEILING. IF LOCATIONS FOUND TO BE IN CONFLICT W/ LIGHT LAYOUT PROVIDE FOR RELOCATION OF MECH. REGISTER & GRILLE. VERIFY W/ MECH. ENGINEER PRIOR TO RELOCATION.

LEGEND

- (E) 2'x4' FLUOR. LIGHT FIXTURE RECESSED IN T-BAR
- 2'x4' FLUOR. LIGHT FIXTURE RECESSED IN T-BAR GRID
- SURFACE MID LIGHT FIXTURE
- 2'x4' T-BAR CIG. GRID W/ ACOUSTICAL PANELS
- TYPICAL GYPSUM BOARD W/ VENER PLASTER CIG.
- 12 X 12 ACOUSTICAL PANELS
- SUPPLY AIR
- RETURN AIR
- EXHAUST FAN
- (E) SUPPLY AIR
- (E) RETURN AIR GRILLE
- (E) EXHAUST FAN
- INCAND. LIGHT FIXTURE SURF. MID.
- INCAND. LIGHT FIXTURE RECESSED EXCEPT AS NOTED
- (E) CEILING TO REMAIN EXCEPT AS NOTED
- MOTION SENSOR. SEE ELECT. PLANS
- INTERCOM SPEAKER. SEE ELECT. PLANS
- (E) SEE ELECT. PLANS



REPRESENTED CEILING PLAN



BUILDING C
PHASE 2

BUILDING D
PHASE 2

<p>pechin associates aia</p> <p>1400 easton drive suite 138 bakersfield, ca 93309 (805)322-2021</p>	<p>Bessie E. Owens Elementary School Modernization Bakersfield City School District</p>	DATE	ISSUE FOR	<p>THESE DRAWINGS, RELATED SPECIFICATIONS, IDEAS, DESIGNS, AND ARRANGEMENTS REPRESENTED THEREBY ARE AND SHALL REMAIN THE PROPERTY OF THE ARCHITECT; AND NO PART THEREOF SHALL BE COPIED, DISCLOSED TO OTHERS OR USED IN CONNECTION WITH ANY WORK OR PROJECT OTHER THAN THE SPECIFIC PROJECT FOR WHICH THEY HAVE BEEN PREPARED AND DEVELOPED WITHOUT THE WRITTEN CONSENT OF THE ARCHITECT. VISUAL CONTACT WITH THESE DRAWINGS OR SPECIFICATIONS SHALL CONSTITUTE CONCLUSIVE EVIDENCE OF ACCEPTANCE OF THESE RESTRICTIONS.</p> <p>WRITTEN DIMENSIONS ON THESE DRAWINGS SHALL HAVE PRECEDENCE OVER SCALED DIMENSIONS; CONTRACTORS SHALL VERIFY AND BE RESPONSIBLE FOR ALL DIMENSIONS AND CONDITIONS ON THE JOB AND THIS OFFICE MUST BE NOTIFIED OF ANY VARIATIONS FROM THE DIMENSIONS AND CONDITIONS SHOWN BY THOSE DRAWINGS.</p> <p>DETAILED SHOP DRAWINGS MUST BE SUBMITTED TO THIS OFFICE TO BE REVIEWED BEFORE PROCEEDING WITH THE FABRICATION OF ANY PRODUCT TO BE INCLUDED IN THIS PROJECT.</p>
		DATE	REVISION	

1/8" = 1'-0"

SHEET
A8
Project Number: 43-0788
Revision Date: 01/30/89