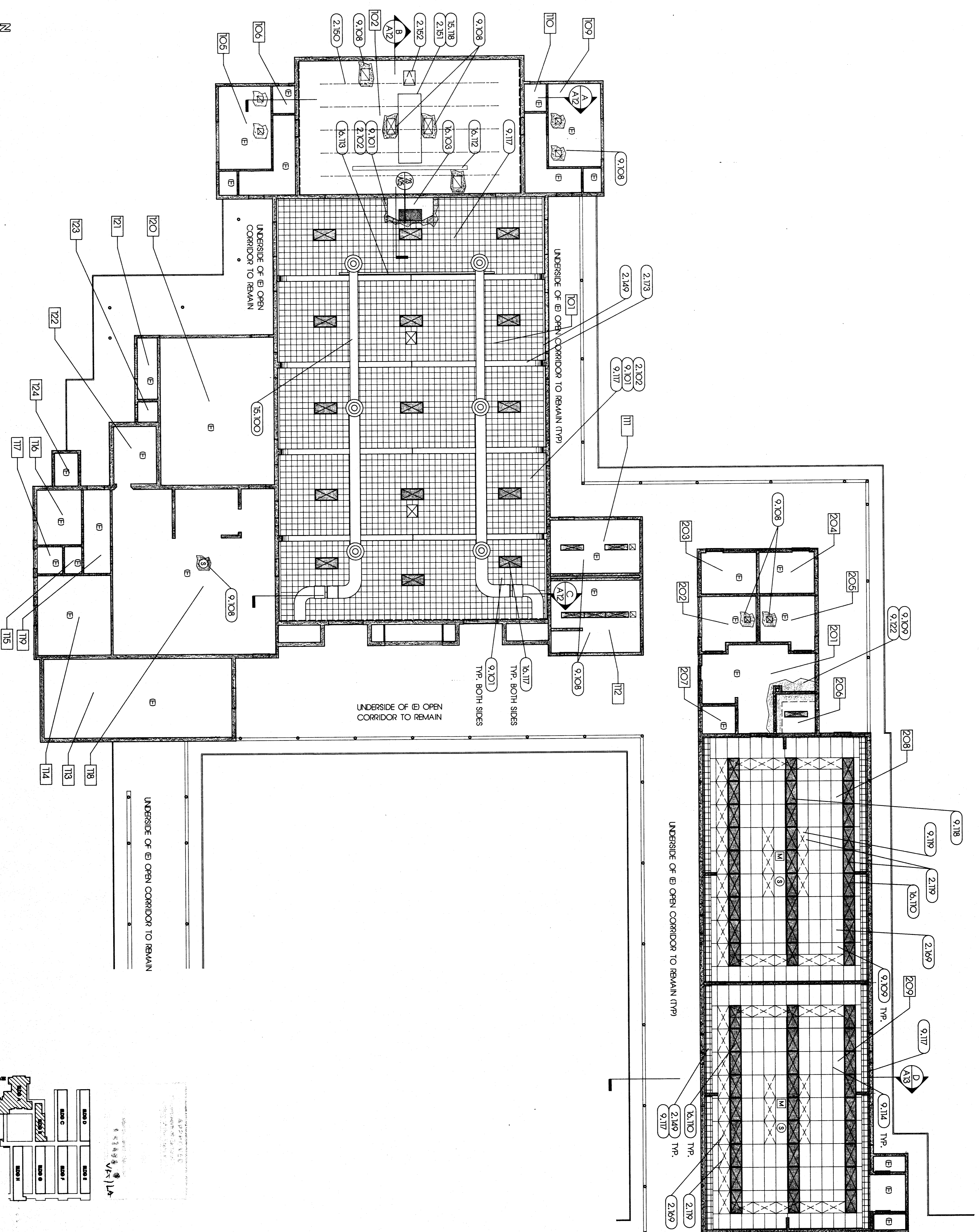


REFLECTED CEILING PLAN



KEYNOTES

2.101 REMOVE (E) VINYL COMPOSITION TILE (VCT) AS REQUIRED	02072
2.102 REMOVE DAMAGED (E) TILE AS REQUIRED	02072
2.103 REMOVE DAMAGED (E) TILE AS REQUIRED	02072
2.118 REMOVE (E) LIGHT FIXTURES; SEE 2.072	
2.149 (E) DAMAGED TRACK TO REMAIN	
2.150 (E) DAMAGED RIGGINGS TO REMAIN	
2.152 (E) CEILING ACCESS	
2.169 REMOVE (E) DAMAGED ACOUSTICAL PANELS	
2.173 (E) PLASTER ARCH TO REMAIN	
9.101 AMBIVEX APPLIED ACOUSTICAL PLASTER & MATCH (E) CEMENT PLASTER W/ VENEER PLASTER TO GR. BE. (E)	09250
9.108 (E) SUSPENDED T-BAR GRID	09000
9.117 (E) ACOUSTICAL TILE TO BE REMOVED & SALVAGE UNDAMAGED (E)	02027
9.119 ACOUSTICAL PANELS ACCOR. PANELS & VARNISHED LIGHT FIX. LOC'S	09311
9.122 PAINTED TO MATCH (E)	
15.100 EXPOSED MECH'L DUCTWORK, REGISTER, ETC.; SEE MECH'L. SEE MECHANICAL PLANS FOR FUSIBLE LINK WORK	15800
16.103 ELECTRICAL CONDUIT & PIPES, ETC.; SEE MECH'L. SEE MECHANICAL PLANS	16200
16.110 ELECTRICAL PLANS SURFACE MOUNTED; SEE ELECTRICAL PLANS	16200
16.112 (E) BORDER LIGHTS; SEE ELECTRICAL PLANS	16200
16.117 REMOVE (E) 2' X 4' LIGHT FIXTURE; SEE ELECTRICAL PLANS	16200

NOTES

PROVIDE ADDITIONAL T-BAR GRIDS TO MATCH (E) AS REQUIRED TO INSTALL LIGHT FIXTURES AS INDICATED

PROVIDE ADDITIONAL T-BAR GRIDS TO MATCH (E) AS REQUIRED TO MAINTAIN A CONTINUOUS GRID SYSTEM AND PROVIDE FOR THE INSTALLATION OF ADDITIONAL ACOUSTICAL PANELS.

SAVAGE (E) ACOUSTICAL PANELS DETERMINED TO BE ACCEPTABLE FOR REINSTALLATION AND REINSTALL IN ABANDONED LIGHT FIXTURE LOCATIONS. PROVIDE ADDITIONAL ACOUSTICAL PANELS TO MATCH (E) AS REQUIRED TO PROVIDE COMPLETED CEILING ASSEMBLY.

CONTRACTOR SHALL VERIFY ALL (E) MECH'L REGISTER & GRILLE LOCATIONS IN (E) T-BAR CEILING. IF LOCATIONS FOUND TO BE IN CONFLICT W/ LIGHT LAYOUT PROVIDE FOR RELOCATION OF MECH'L REGISTER & GRILLE. VERIFY W/ MECH'L ENGINEER PRIOR TO RELOCATION.

LEGEND

- (E) 2x4 FLUOR. LIGHT FIXTURE RECESSED IN T-BAR
- 2x4 FLUOR. LIGHT FIXTURE RECESSED IN T-BAR GRID
- SURFACE MTD LIGHT FIXTURE
- 2x4 T-BAR C.G. GRID W/ ACOUSTICAL PANELS
- 12 X 12 ACOUSTICAL PANELS
- SUPPLY AIR
- RETURN AIR
- EXHAUST FAN
- (E) RETURN AIR GRILLE
- (E) EXHAUST FAN
- INCAND. LIGHT FIXTURE SURF. MTD.
- INCAND. LIGHT FIXTURE RECESSED
- (E) CEILING TO REMAIN EXCEPT AS NOTED
- (M) MOTION SENSOR. SEE ELECT'L PLANS
- (S) INTERCOM SPEAKER SEE ELECT'L PLANS

1/8" = 1'-0"

<p>pechin associates aia</p> <p>1400 easton drive bakersfield, ca 93309</p> <p>suite 138 (805)322-2021</p>	<p>Bessie E. Owens Elementary School Modernization</p> <p>Bakersfield City School District</p>	<p>DATE</p> <p>ISSUE FOR</p>	<p>DATE</p> <p>REVISION</p>
	<p>THESE DRAWINGS RELATED SPECIFICATIONS, IDEAS, DESIGNS, AND ARRANGEMENTS REPRESENTED THEREBY ARE AND SHALL REMAIN THE PROPERTY OF THE ARCHITECT; AND NO PART THEREOF SHALL BE COPIED, DISCLOSED TO OTHERS OR USED IN CONNECTION WITH ANY WORK OR PROJECT OTHER THAN THE SPECIFIC PROJECT FOR WHICH THEY HAVE BEEN PREPARED AND DEVELOPED WITHOUT THE WRITTEN CONSENT OF THE ARCHITECT. VISUAL CONTACT WITH THESE DRAWINGS OR SPECIFICATIONS SHALL CONSTITUTE CONCLUSIVE EVIDENCE OF ACCEPTANCE OF ANY VARIATIONS FROM THE DIMENSIONS AND CONDITIONS SHOWN BY THESE DRAWINGS.</p> <p>WRITTEN DIMENSIONS ON THESE DRAWINGS SHALL HAVE PRECEDENCE OVER SCALED DIMENSIONS; CONTRACTORS SHALL VERIFY AND BE RESPONSIBLE FOR ALL DIMENSIONS AND CONDITIONS ON THE JOB AND THIS OFFICE MUST BE NOTIFIED OF ANY VARIATIONS FROM THE DIMENSIONS AND CONDITIONS SHOWN BY THESE DRAWINGS.</p> <p>DETAILED SHOP DRAWINGS MUST BE SUBMITTED TO THIS OFFICE FOR REVIEW BEFORE PROCEEDING WITH THE FABRICATION OF ANY PRODUCT TO BE INCLUDED IN THIS PROJECT.</p>		