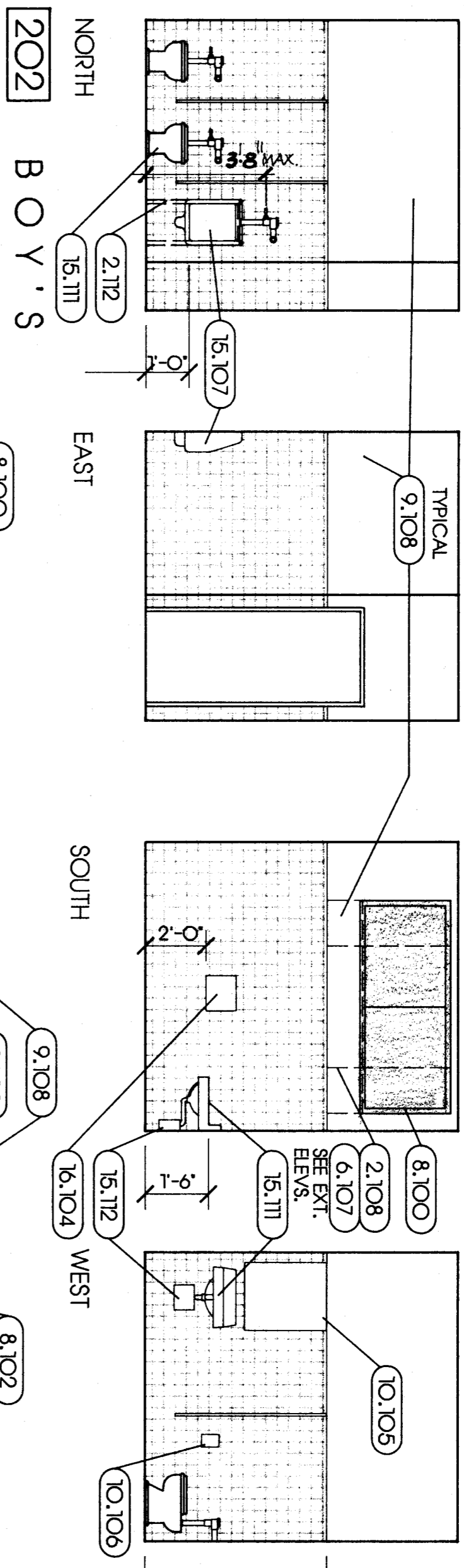


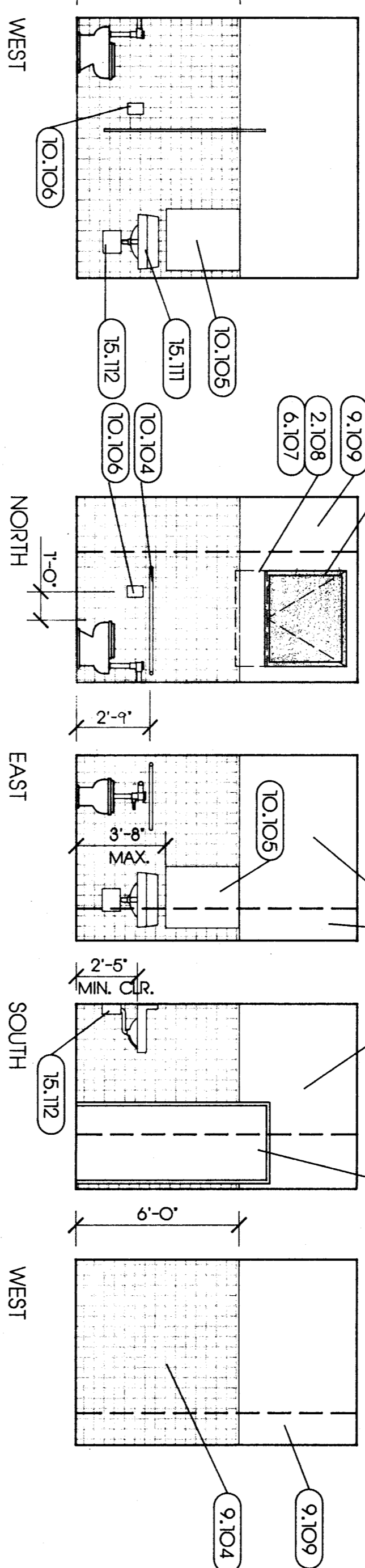
112 WOMEN'S

201 VESTIBULE



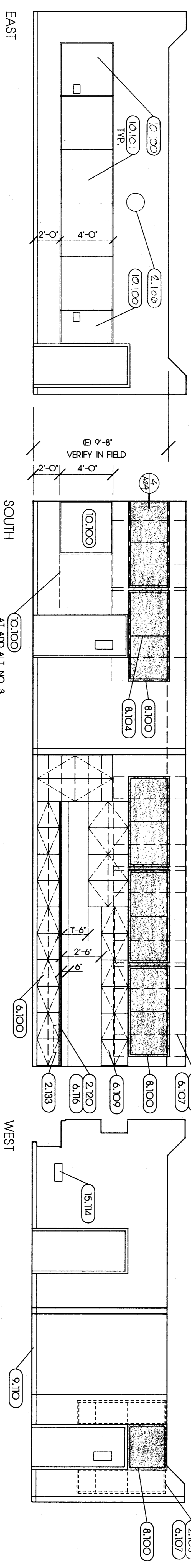
202 BOY'S

205 GIRL'S

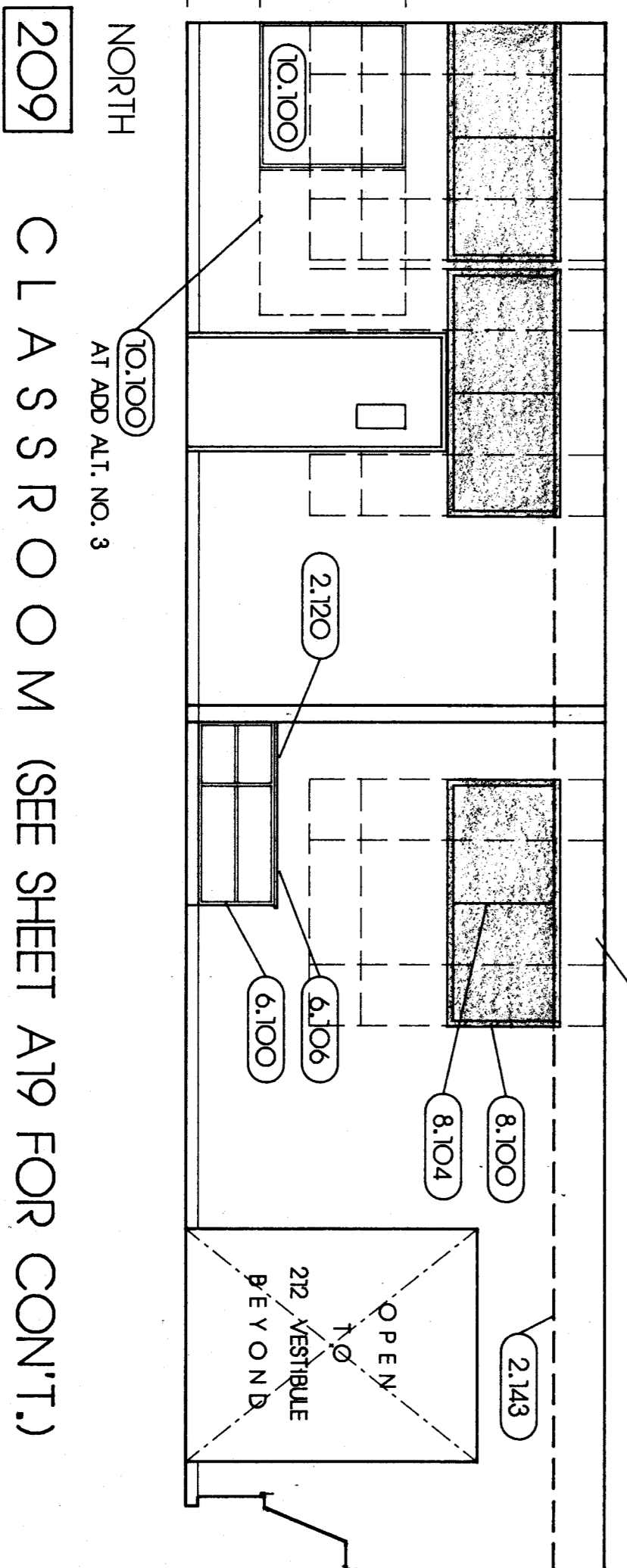


205 GIRL'S (CONT.) 206 HANDICAP TOILET

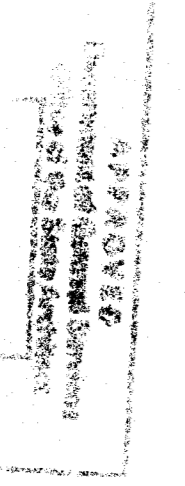
208 CLASSROOM



208 CLASSROOM (CONT.)



209 CLASSROOM (SEE SHEET A19 FOR CONT.)



KEYNOTES

- 2.106 (E) CABINET
- 2.108 REMOVE (E) WINDOW SASH
- 2.112 REMOVE (E) FLOOR-MOUNTED
- 2.116 REMOVE (E) FLOOR PARTITIONS
- 2.113 (E) CEILING
- 6.105 (E) CABINET TO REMAIN
- 6.106 PLASTIC LAMINATED CABINET DOOR
- 6.107 WOOD PARTITION TO BE STAINED
- 6.109 81/2" O.C. STAIR C/W/2" STAIR
- 6.109 PLASTIC LAMINATED UPPER
- 6.115 SHIRAZES TO MATCH (E)
- 6.116 PLASTIC LAMINATED COUNTERTOP
- W/ STAIRS
- 8.100 ALUMINUM SPOKERHOOT
- 8.102 METAL DOOR & FRAME
- 8.104 (E) STAIR RISER
- 9.108 CERAMIC TILE FLOORING &
- 9.108 PATCH & MATCH (E) CHEST
- 9.109 PLASTER W/ VENEER PLASTER TO
- 9.110 MATCH (E)
- 9.110 VINYL-COVERED TONGUAND
- 10.103 TOILET PARTITION
- 10.104 GRAB-BARS
- 10.106 TOILET PAPER DISPENSER
- 15.107 WALL-MOUNTED VENTILS: SEE
- 15.111 REINSTALL (E) PLUMBING
- 15.112 FIXTURES: SEE PLUMBING PLANS
- 15.114 PLUMBING PLANS PER P-7003; SEE
- 15.114 HVAC UNITS: SEE MECHANICAL
- 16.104 WALL-MOUNTED ELECTRIC HAND
- DRYERS TO MATCH (E)

INTERIOR ELEVATIONS

1/4" = 1'-0"

Kevin E. Pechin C-8366  
 pechin associates aia  
 1400 easton drive suite 138 bakersfield, ca 93309 (805) 322-2021

Bessie E. Owens Elementary School Modernization Bakersfield City School District

DATE	ISSUE FOR
DATE	REVISION

THESE DRAWINGS, RELATED SPECIFICATIONS, IDEAS, DESIGNS, AND ARRANGEMENTS REPRESENTED THEREBY ARE AND SHALL REMAIN THE PROPERTY OF THE ARCHITECT; AND NO PART THEREOF SHALL BE COPIED, DISCLOSED TO OTHERS OR USED IN CONNECTION WITH ANY WORK OR PROJECT OTHER THAN THE SPECIFIC PROJECT FOR WHICH THEY HAVE BEEN PREPARED AND DEVELOPED WITHOUT THE WRITTEN CONSENT OF THE ARCHITECT. VISUAL CONTACT WITH THESE DRAWINGS OR SPECIFICATIONS SHALL CONSTITUTE CONCLUSIVE EVIDENCE OF ACCEPTANCE OF THESE RESTRICTIONS.

WRITTEN DIMENSIONS ON THESE DRAWINGS SHALL HAVE PRECEDENCE OVER SCALED DIMENSIONS; CONTRACTORS SHALL VERIFY AND BE RESPONSIBLE FOR ALL DIMENSIONS AND CONDITIONS ON THE JOB AND THIS OFFICE MUST BE NOTIFIED OF ANY VARIATIONS FROM THE DIMENSIONS AND CONDITIONS SHOWN BY THESE DRAWINGS.

DETAILED SHOP DRAWINGS MUST BE SUBMITTED TO THIS OFFICE FOR REVIEW BEFORE PROCEEDING WITH THE FABRICATION OF ANY PRODUCT TO BE INCLUDED IN THIS PROJECT.

Project Number: 413-0788  
 Revision Date: 01/24/89