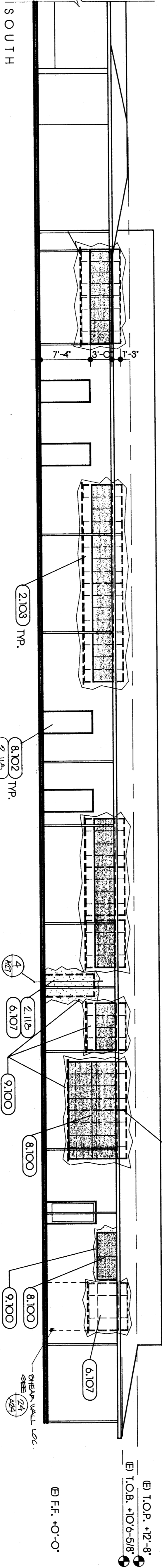
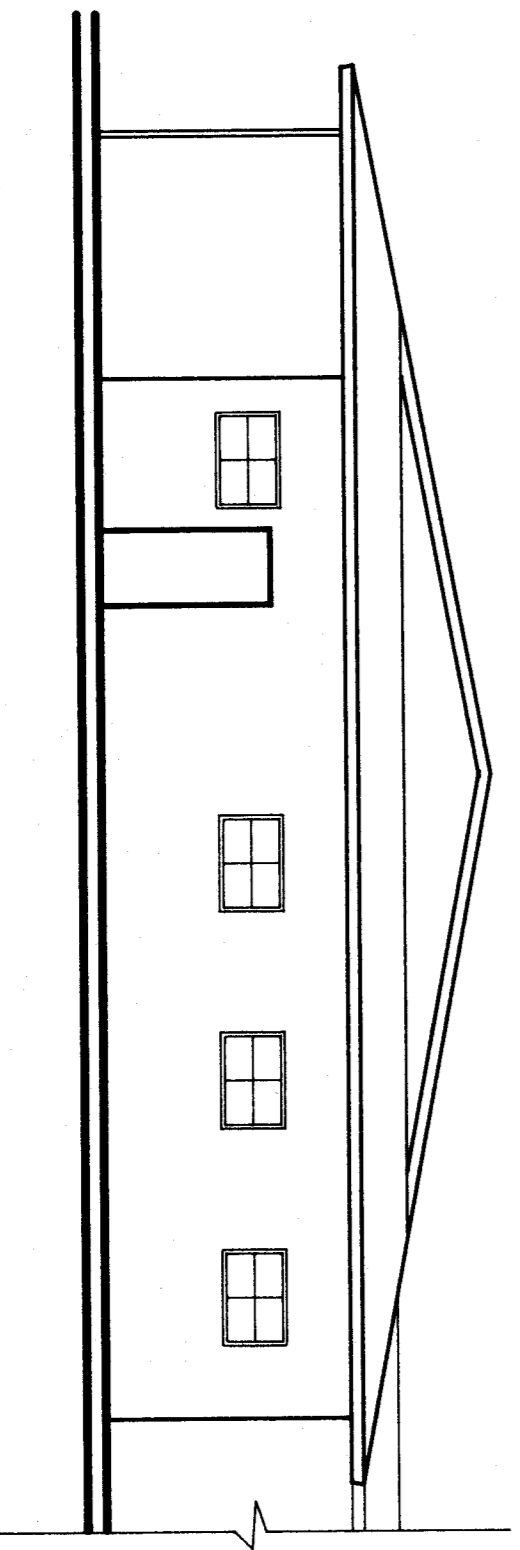


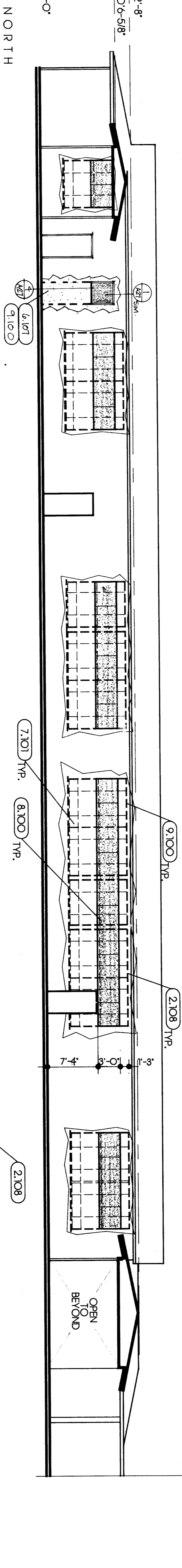
# EXTERIOR ELEVATIONS

BUILDING H

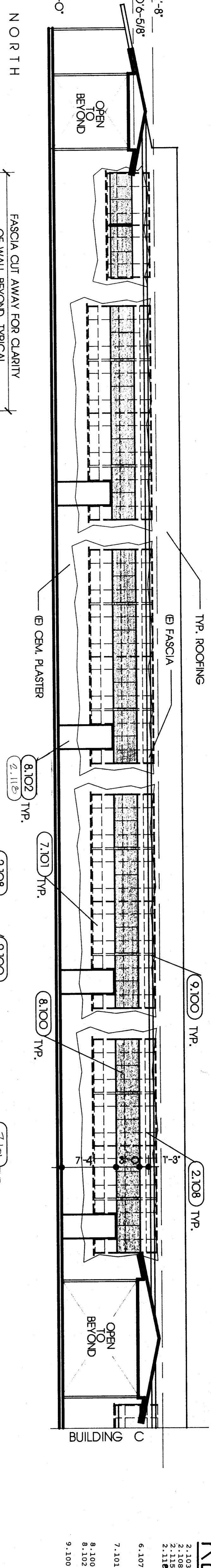
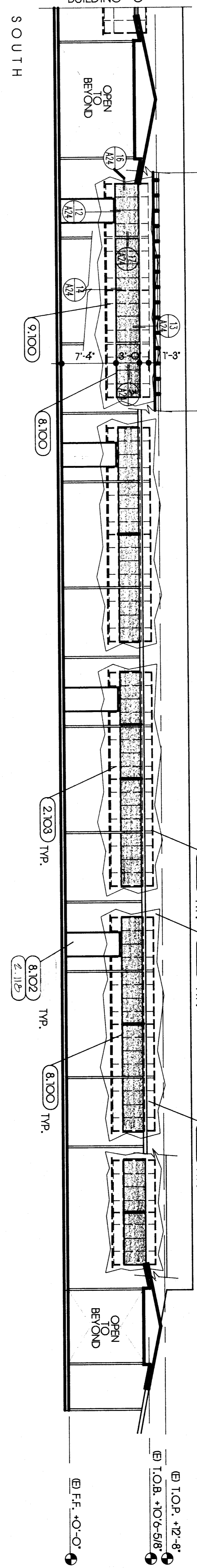
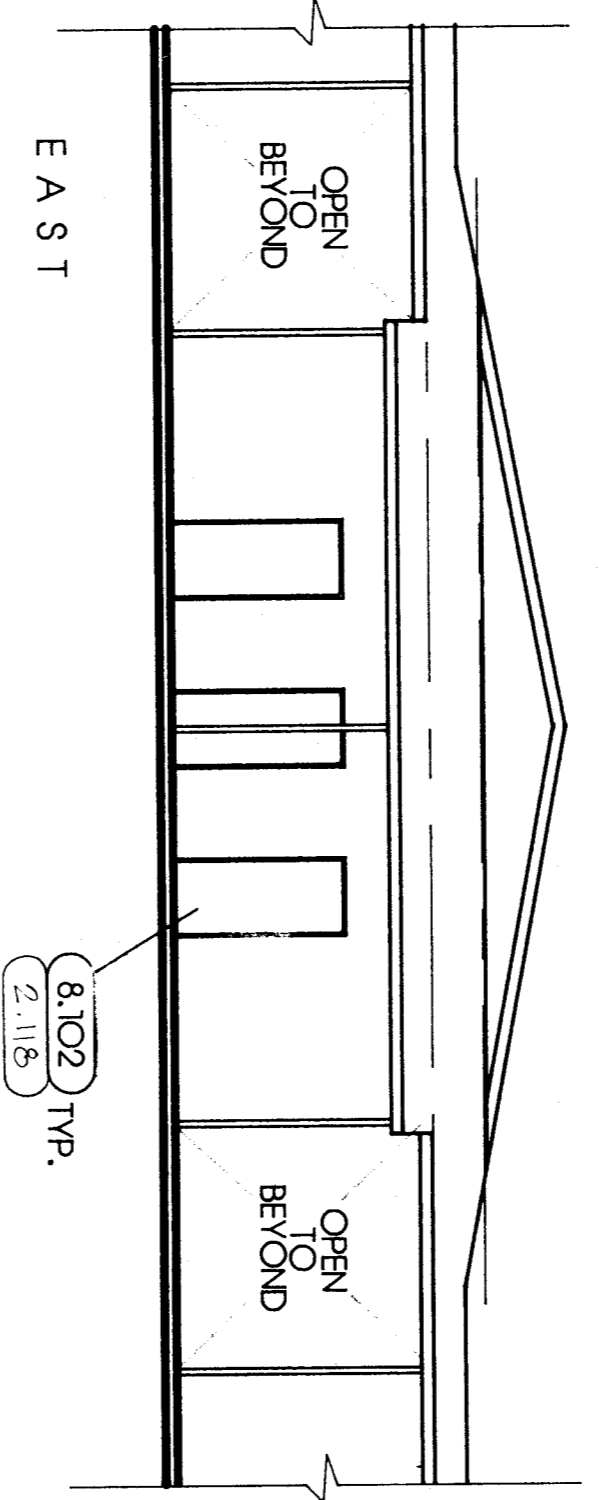
EAST (NO WORK THIS ELEVATION)



NOTE: SEE 171 WINDOW INFILL PLAN & 172 FPA WALL FRAMING



BUILDING G



## KEYNOTES

- 2.103 REMOVE (E) PLUMBING
- 2.108 REMOVE (E) WINDOW SASH
- 2.115 REMOVE (E) WINDOW FRAME
- 6.107 INFILL (E) OPEN G W/2x6 STUDS @ 18" O.C.
- 7.101 R-19 MIN. INSULATION IN INFILL STUD CAVITIES: SEE DETAIL
- 8.100 ALUMINUM SPOORSTROM METAL DOOR @ 7500
- 9.100 PORTLAND CEMENT PLASTER TO MATCH (E)
- 02072
- 02072
- 02072
- 02072
- 06001
- 07213
- 08410
- 08111
- 09220

PROJECT SHEET  
**PIG**  
 Project Number: 413-0788  
 Revision Date: 02/02/89

*Harvey C. Pechin* C-8366  
**pechin associates architects aia**  
 1400 easton drive suite 138  
 bakersfield, ca 93309 (805) 322-2021

Bessie E. Owens Elementary School Modernization  
 Bakersfield City School District

DATE	ISSUE FOR
DATE	REVISION

THESE DRAWINGS, RELATED SPECIFICATIONS, IDEAS, DESIGNS, AND ARRANGEMENTS REPRESENTED THEREBY ARE AND SHALL REMAIN THE PROPERTY OF THE ARCHITECT, AND NO PART THEREOF SHALL BE COPIED, DISCLOSED TO OTHERS OR USED IN CONNECTION WITH ANY WORK OR PROJECT OTHER THAN THE SPECIFIC PROJECT FOR WHICH THEY HAVE BEEN PREPARED AND DEVELOPED WITHOUT THE WRITTEN CONSENT OF THE ARCHITECT. VISUAL CONTACT WITH THESE DRAWINGS OR SPECIFICATIONS SHALL CONSTITUTE CONCLUSIVE EVIDENCE OF ACCEPTANCE OF THESE RESTRICTIONS.

WRITTEN DIMENSIONS ON THESE DRAWINGS SHALL HAVE PRECEDENCE OVER SCALED DIMENSIONS; CONTRACTORS SHALL VERIFY AND BE RESPONSIBLE FOR ALL DIMENSIONS AND CONDITIONS ON THE JOB AND THIS OFFICE MUST BE NOTICED OF ANY VARIATIONS FROM THE DIMENSIONS AND CONDITIONS SHOWN BY THESE DRAWINGS.

DETAILED SHOP DRAWINGS MUST BE SUBMITTED TO THIS OFFICE FOR REVIEW BEFORE PROCEEDING WITH THE FABRICATION OF ANY PRODUCT TO BE INCLUDED IN THIS PROJECT.