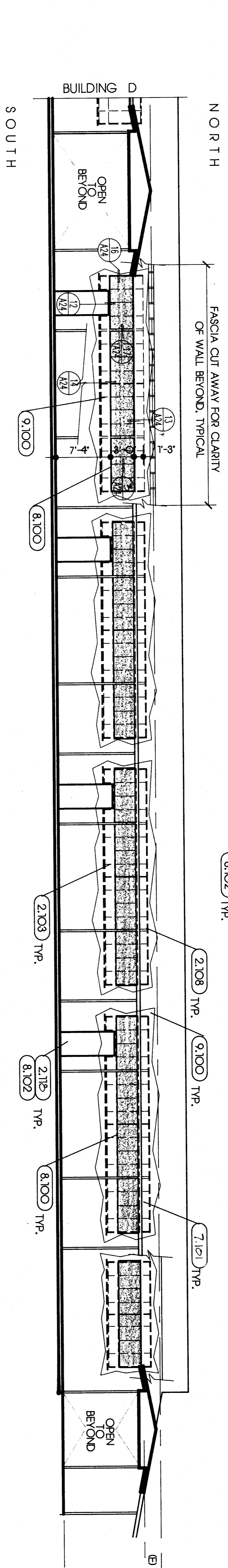


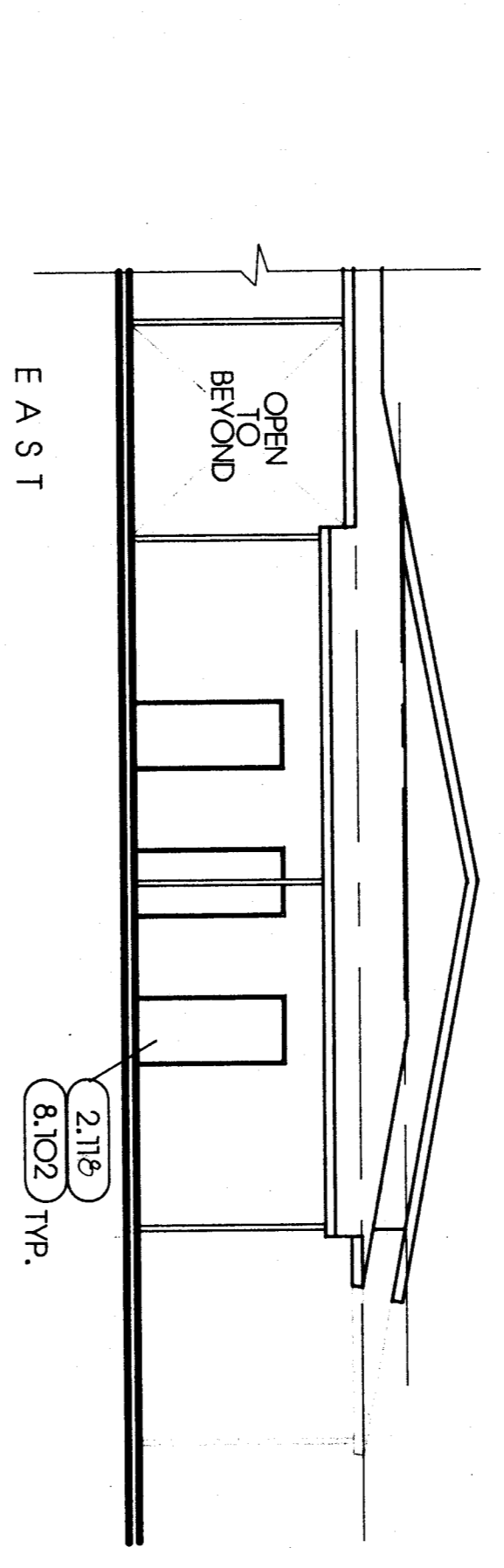
**KEYNOTES**

2.103 REMOVE (E) WOODWORK	02072
2.108 REMOVE (E) WINDOW CASH	02072
2.112 REMOVE (E) CARPET	02072
2.116 REMOVE (E) DOOR	02072
7.101 R-19 MIN. INSULATION IN INFILL	07213
8.100 ALUMINUM POWDERFORM	08410
8.108 METAL DOOR & FRAME	08111
9.100 PORTLAND CEMENT PLASTER TO MATCH (E)	09220

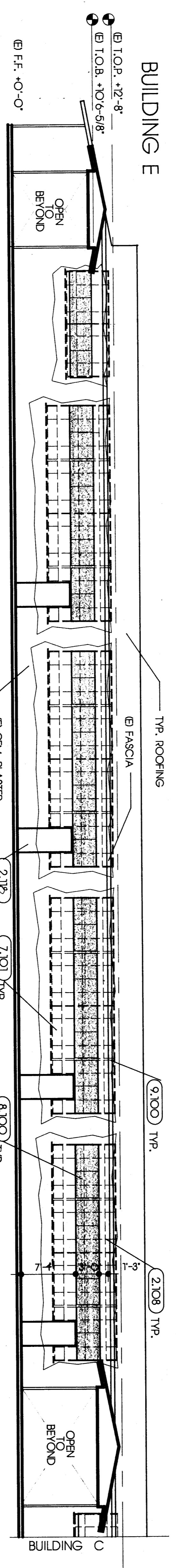


**KEYNOTES**

2.103 REMOVE (E) WOODWORK	02072
2.108 REMOVE (E) WINDOW CASH	02072
2.112 REMOVE (E) CARPET	02072
2.116 REMOVE (E) DOOR	02072
7.101 R-19 MIN. INSULATION IN INFILL	07213
8.100 ALUMINUM POWDERFORM	08410
8.108 METAL DOOR & FRAME	08111
9.100 PORTLAND CEMENT PLASTER TO MATCH (E)	09220

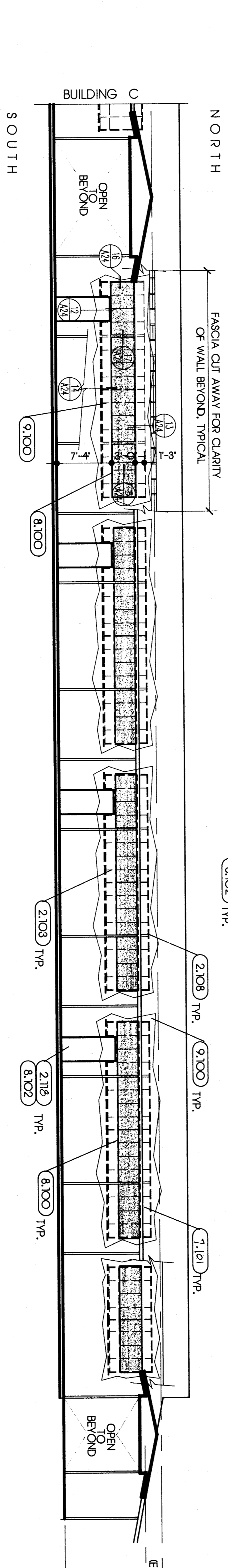


**NOTE:** SEE (1) FOR WALL FINISHES OF KEY WINDOW INFILL



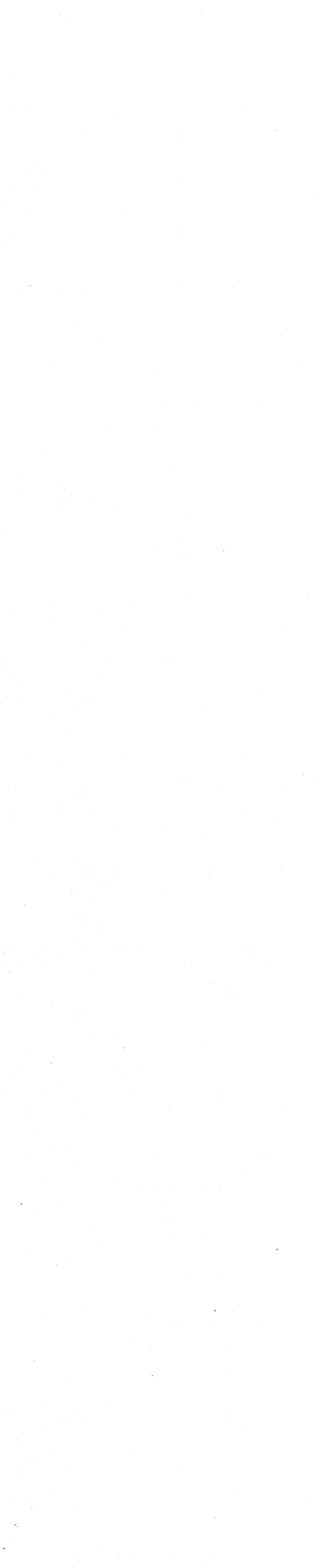
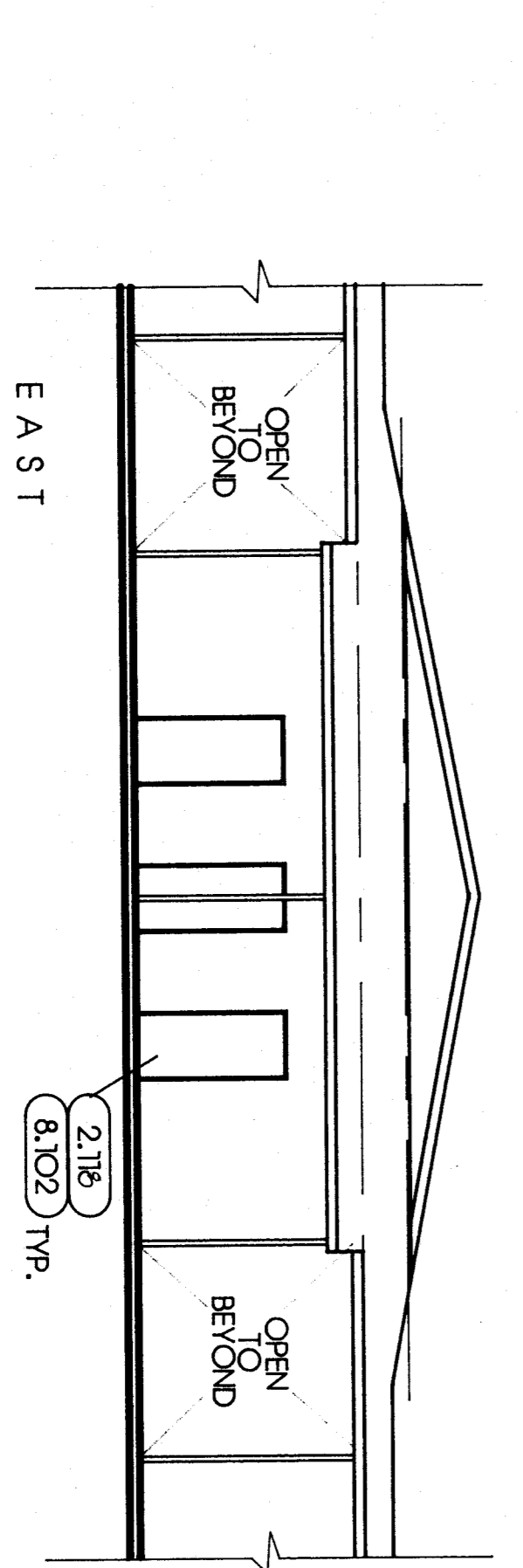
**KEYNOTES**

2.103 REMOVE (E) WOODWORK	02072
2.108 REMOVE (E) WINDOW CASH	02072
2.112 REMOVE (E) CARPET	02072
2.116 REMOVE (E) DOOR	02072
7.101 R-19 MIN. INSULATION IN INFILL	07213
8.100 ALUMINUM POWDERFORM	08410
8.108 METAL DOOR & FRAME	08111
9.100 PORTLAND CEMENT PLASTER TO MATCH (E)	09220



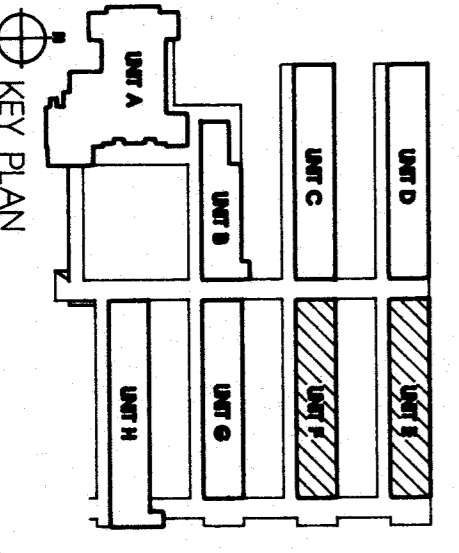
**KEYNOTES**

2.103 REMOVE (E) WOODWORK	02072
2.108 REMOVE (E) WINDOW CASH	02072
2.112 REMOVE (E) CARPET	02072
2.116 REMOVE (E) DOOR	02072
7.101 R-19 MIN. INSULATION IN INFILL	07213
8.100 ALUMINUM POWDERFORM	08410
8.108 METAL DOOR & FRAME	08111
9.100 PORTLAND CEMENT PLASTER TO MATCH (E)	09220



**KEYNOTES**

2.103 REMOVE (E) WOODWORK	02072
2.108 REMOVE (E) WINDOW CASH	02072
2.112 REMOVE (E) CARPET	02072
2.116 REMOVE (E) DOOR	02072
7.101 R-19 MIN. INSULATION IN INFILL	07213
8.100 ALUMINUM POWDERFORM	08410
8.108 METAL DOOR & FRAME	08111
9.100 PORTLAND CEMENT PLASTER TO MATCH (E)	09220



1/8" = 1'-0"

**EXTERIOR ELEVATIONS**

**pechin associates aia**  
 1400 edston drive suite 138  
 bakersfield, ca 93309 (805)322-2021

*Jarvis C. Pechin* C-8366

**PAIS**  
 Project Number 413-O-78  
 Revision Date 02/02/89

Bessie E. Owens Elementary School Modernization  
 Bakersfield City School District

DATE: \_\_\_\_\_ ISSUE FOR: \_\_\_\_\_  
 DATE: \_\_\_\_\_ REVISION: \_\_\_\_\_

THESE DRAWINGS, RELATED SPECIFICATIONS, IDEAS, DESIGNS, AND ARRANGEMENTS REPRESENTED THEREBY ARE AND SHALL REMAIN THE PROPERTY OF THE ARCHITECT, AND NO PART THEREOF SHALL BE COPIED, DISCLOSED TO OTHERS OR USED IN CONNECTION WITH ANY WORK OR PROJECT OTHER THAN THE SPECIFIC PROJECT FOR WHICH THEY HAVE BEEN PREPARED AND DEVELOPED WITHOUT THE WRITTEN CONSENT OF THE ARCHITECT. VISUAL CONTACT WITH THESE DRAWINGS OR SPECIFICATIONS SHALL CONSTITUTE CONCLUSIVE EVIDENCE OF ACCEPTANCE OF THESE RESTRICTIONS.

WRITTEN DIMENSIONS ON THESE DRAWINGS SHALL HAVE PRECEDENCE OVER SCALED DIMENSIONS. CONTRACTORS SHALL VERIFY AND BE RESPONSIBLE FOR ALL DIMENSIONS AND CONDITIONS ON THE JOB AND THEIR OFFICE MUST BE NOTIFIED OF ANY VARIATIONS FROM THE DIMENSIONS AND CONDITIONS SHOWN BY THESE DRAWINGS.

DETAILED SHOP DRAWINGS MUST BE SUBMITTED TO THIS OFFICE FOR REVIEW BEFORE PROCEEDING WITH THE FABRICATION OF ANY PRODUCT TO BE INCLUDED IN THIS PROJECT.