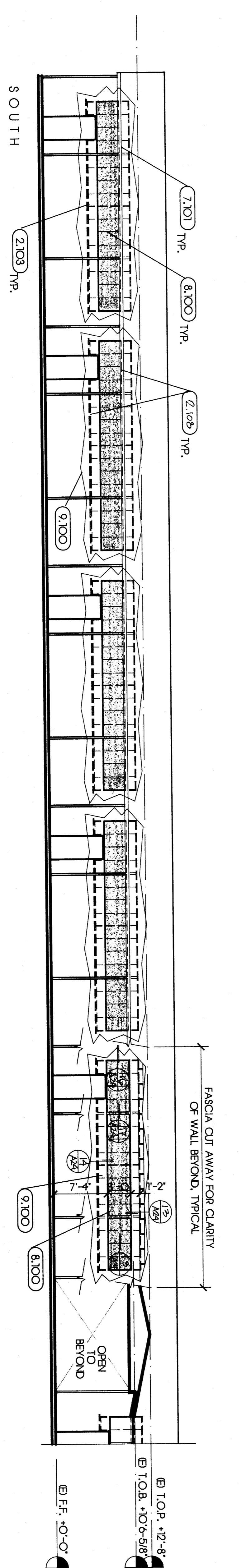
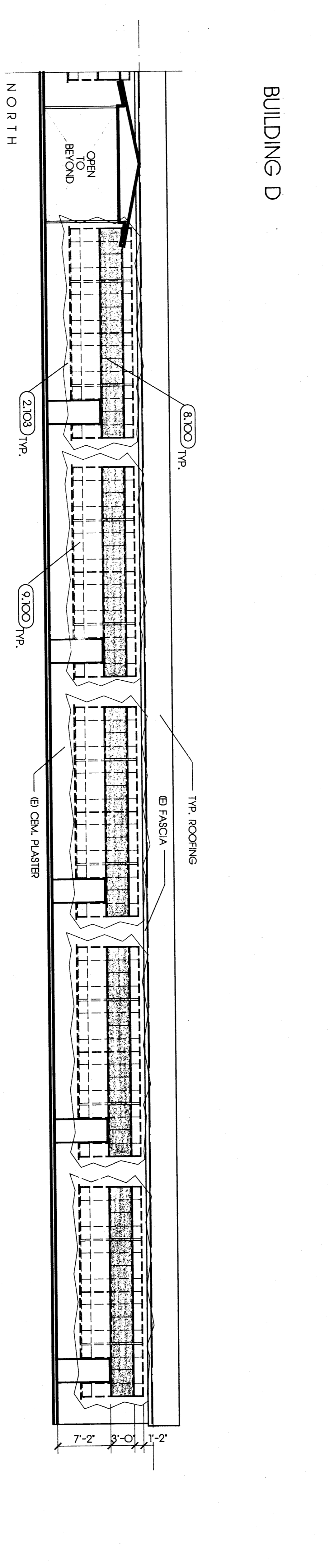
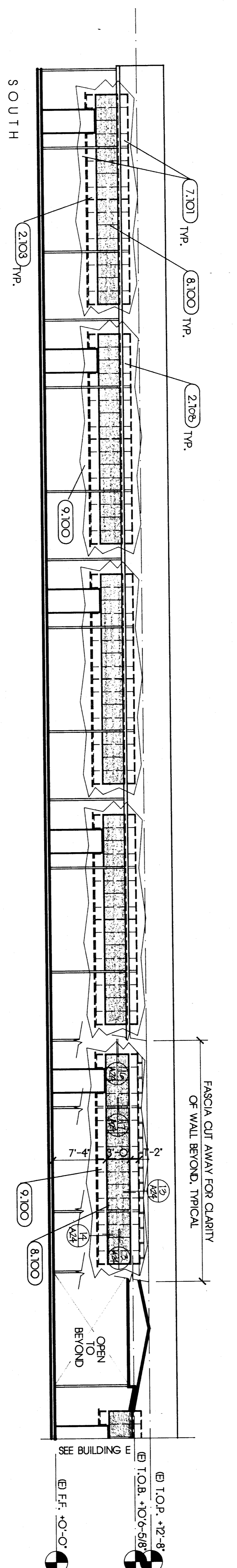
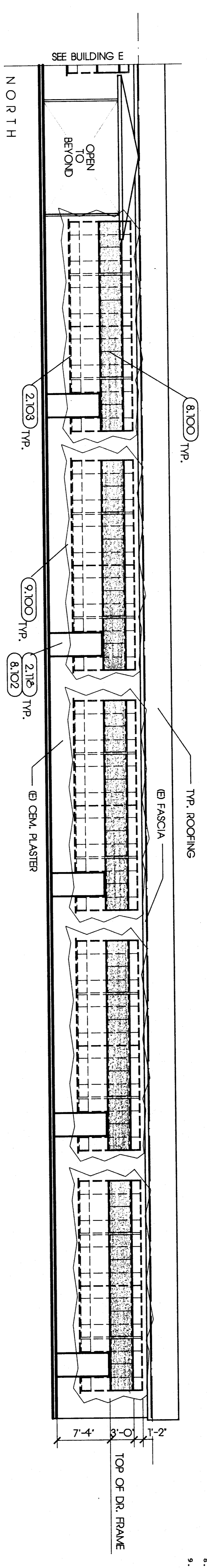


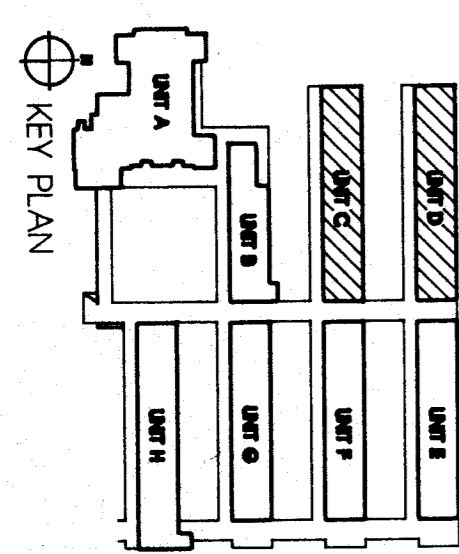
KEYNOTES

- 2.103 REMOVE (E) PLUMB
- 2.115 REMOVE (E) CASSET
- 2.106 REMOVE (E) WINDOW SASH
- 2.116 REMOVE (E) WINDOW FRAME
- 7.101 R-19 MIN. INSULATION IN INFILL
- 7.101 STUO CAVITIES; SEE DETAIL
- 8.100 ALUMINUM STOREFRONT
- 8.102 METAL DOOR & FRAME
- 9.100 PORTLAND CEMENT PLASTER TO MATCH (E)

- 02072
- 02072
- 02072
- 02072
- 02072
- 02072
- 02072
- 02072
- 02072
- 02072



NOTE: SEE (E) FOR WALL FRAMING & (E) WINDOW INFILLS



EXTERIOR ELEVATIONS

BUILDING C

BUILDING D

1/8" = 1'-0"

SHEET		Jarrold C. Pechin C-8366 architects aia 1400 easton drive suite 138 bakersfield, ca 93309 (805) 322-2021	Bessie E. Owens Elementary School Modernization Bakersfield City School District		DATE	ISSUE FOR	THESE DRAWINGS, RELATED SPECIFICATIONS, IDEAS, DESIGNS, AND ARRANGEMENTS REPRESENTED THEREBY ARE AND SHALL REMAIN THE PROPERTY OF THE ARCHITECT; AND NO PART THEREOF SHALL BE COPIED, DISCLOSED TO OTHERS OR USED IN CONNECTION WITH ANY WORK OR PROJECT OTHER THAN THE SPECIFIC PROJECT FOR WHICH THEY HAVE BEEN PREPARED AND DEVELOPED WITHOUT THE WRITTEN CONSENT OF THE ARCHITECT. VISUAL CONTACT WITH THESE DRAWINGS OR SPECIFICATIONS SHALL CONSTITUTE CONCLUSIVE EVIDENCE OF ACCEPTANCE OF THESE RESTRICTIONS. WRITTEN DIMENSIONS ON THESE DRAWINGS SHALL HAVE PRECEDENCE OVER ALL DIMENSIONS AND CONDITIONS ON THE JOB AND THIS OFFICE MUST BE NOTIFIED OF ANY VARIATIONS FROM THE DIMENSIONS AND CONDITIONS SHOWN BY THESE DRAWINGS. DETAILED SHOP DRAWINGS MUST BE SUBMITTED TO THIS OFFICE FOR REVIEW BEFORE PROCEEDING WITH THE FABRICATION OF ANY PRODUCT TO BE INCLUDED IN THIS PROJECT.
			MAY 1989	REVISION			