

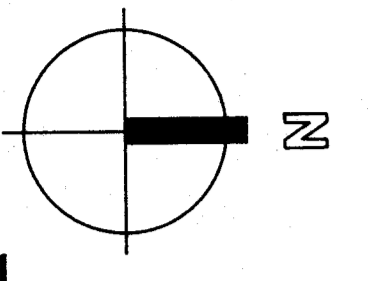
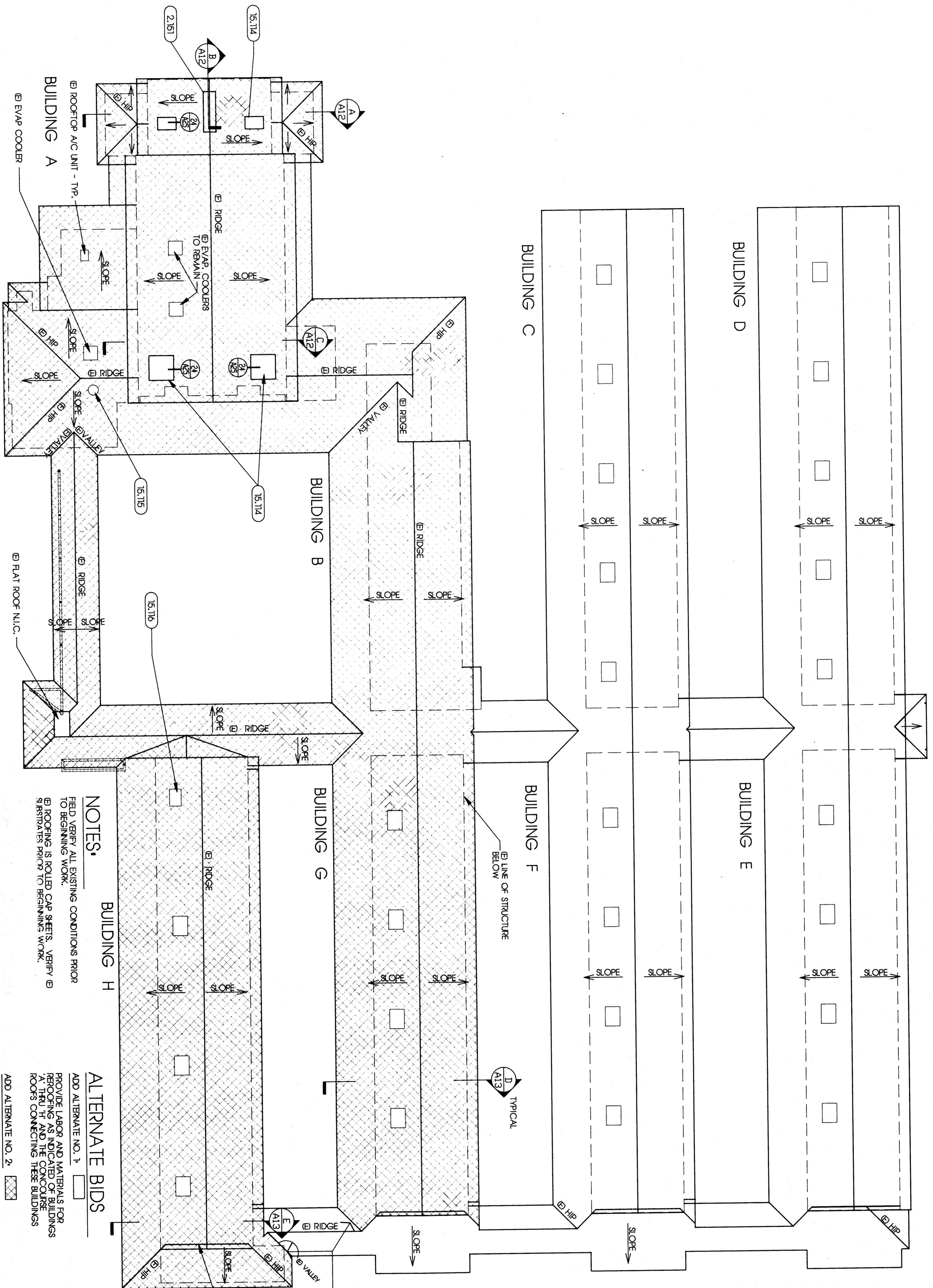
KEYNOTES

- 2.151 (E) MONITOR
- 15.114 HVAC UNITS; SEE MECHANICAL
- 15.115 EXHAUST FAN; SEE MECHANICAL
- 15.116 (E) MECHANICAL UNITS TO REMAIN

THESE DRAWINGS, RELATED SPECIFICATIONS, IDEAS, DESIGNS, AND ARRANGEMENTS REPRESENTED THEREBY ARE AND SHALL REMAIN THE PROPERTY OF THE ARCHITECT, AND NO PART THEREOF SHALL BE COPIED, DISCLOSED TO OTHERS OR USED IN CONNECTION WITH ANY WORK OR PROJECT OTHER THAN THE SPECIFIC PROJECT FOR WHICH THEY HAVE BEEN PREPARED AND DEVELOPED WITHOUT THE WRITTEN CONSENT OF THE ARCHITECT. VISUAL CONTACT WITH THESE DRAWINGS OR SPECIFICATIONS SHALL CONSTITUTE CONCLUSIVE EVIDENCE OF ACCEPTANCE OF THESE RESTRICTIONS.

WRITTEN DIMENSIONS ON THESE DRAWINGS SHALL HAVE PRECEDENCE OVER SCALED DIMENSIONS. CONTRACTORS SHALL VERIFY AND BE RESPONSIBLE FOR ALL DIMENSIONS AND CONDITIONS ON THE JOB AND THIS OFFICE MUST BE NOTIFIED OF ANY VARIATIONS FROM THE DIMENSIONS AND CONDITIONS SHOWN BY THESE DRAWINGS.

DETAILED SHOP DRAWINGS MUST BE SUBMITTED TO THIS OFFICE FOR REVIEW BEFORE PROCEEDING WITH THE FABRICATION OF ANY PRODUCT TO BE INCLUDED IN THIS PROJECT.



ROOF PLAN

NOTES:

- FIELD VERIFY ALL EXISTING CONDITIONS PRIOR TO BEGINNING WORK.
- ROOFING IS ROLLED CAP SHEETS. VERIFY (E) SPRAYERS PRIOR TO BEGINNING WORK.

ALTERNATE BIDS

- ADD ALTERNATE NO. 1
- PROVIDE LABOR AND MATERIALS FOR REROOFING AS INDICATED OF BUILDINGS 'A', 'B', 'G', & 'H' AND THE CONCOURSE ROOFS CONNECTING THESE BUILDINGS.
- ADD ALTERNATE NO. 2
- PROVIDE LABOR AND MATERIALS FOR REROOFING AS INDICATED OF BUILDINGS 'A', 'B', 'G', & 'H' AND THE CONCOURSE ROOFS CONNECTING ONLY THESE BUILDINGS.

ROOFING TO BE CLASS 'A' ASPHALT SHINGLES OVER TWO LAYERS OF 5/8" PLYWOOD SHEETING IN CONFORMANCE WITH DOUBLE COVERAGE OF SHINGLES. REROOFING TO BE PER U.B.C. APPENDIX CHAPTER 22.

(E) SLOPE 2 1/2 : 12

ROOFING SHALL BE COMPLETED IN PHASE 1. VERIFY THE ROOFING WORK OBSPECTED ADD ALTERNATE WITH THE ARCHITECT PRIOR TO BEGINNING WORK.

1/16" = 1'-0"

pechin associates architects aia

1400 easton drive suite 138
bakersfield, ca 93309 (805) 322-2021

Project Number: 413-0788
Revision Date: 01/24/89

Bessie E. Owens Elementary School Modernization
Bakersfield City School District

MAY 11 1990

DATE	ISSUE FOR
DATE	REVISION

SHEET