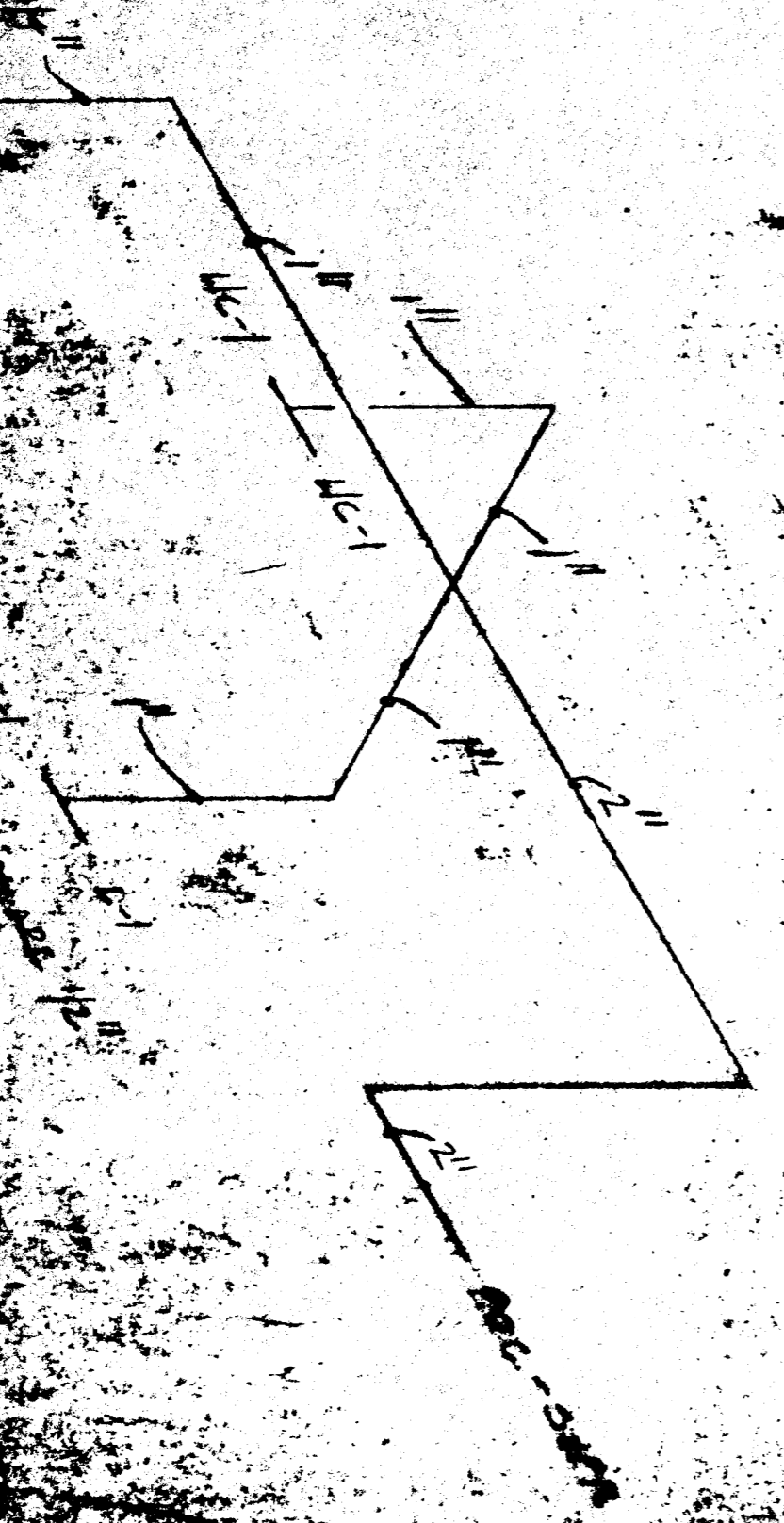
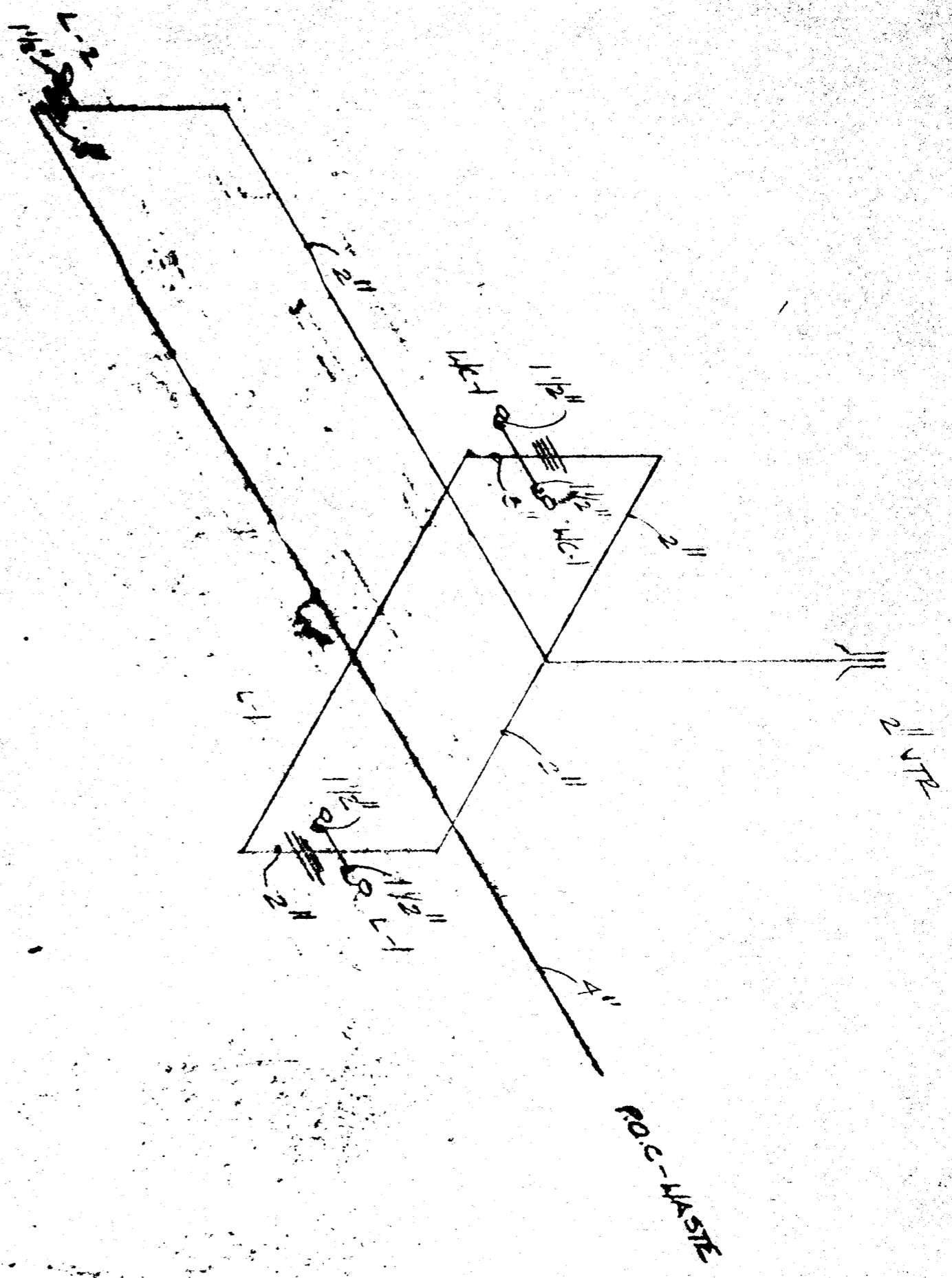
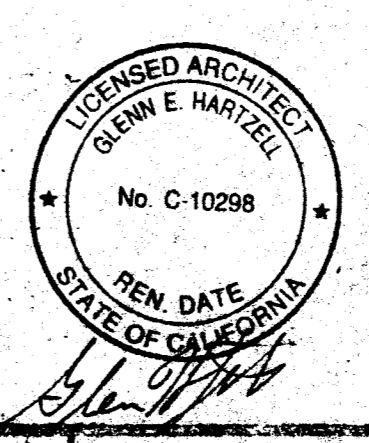
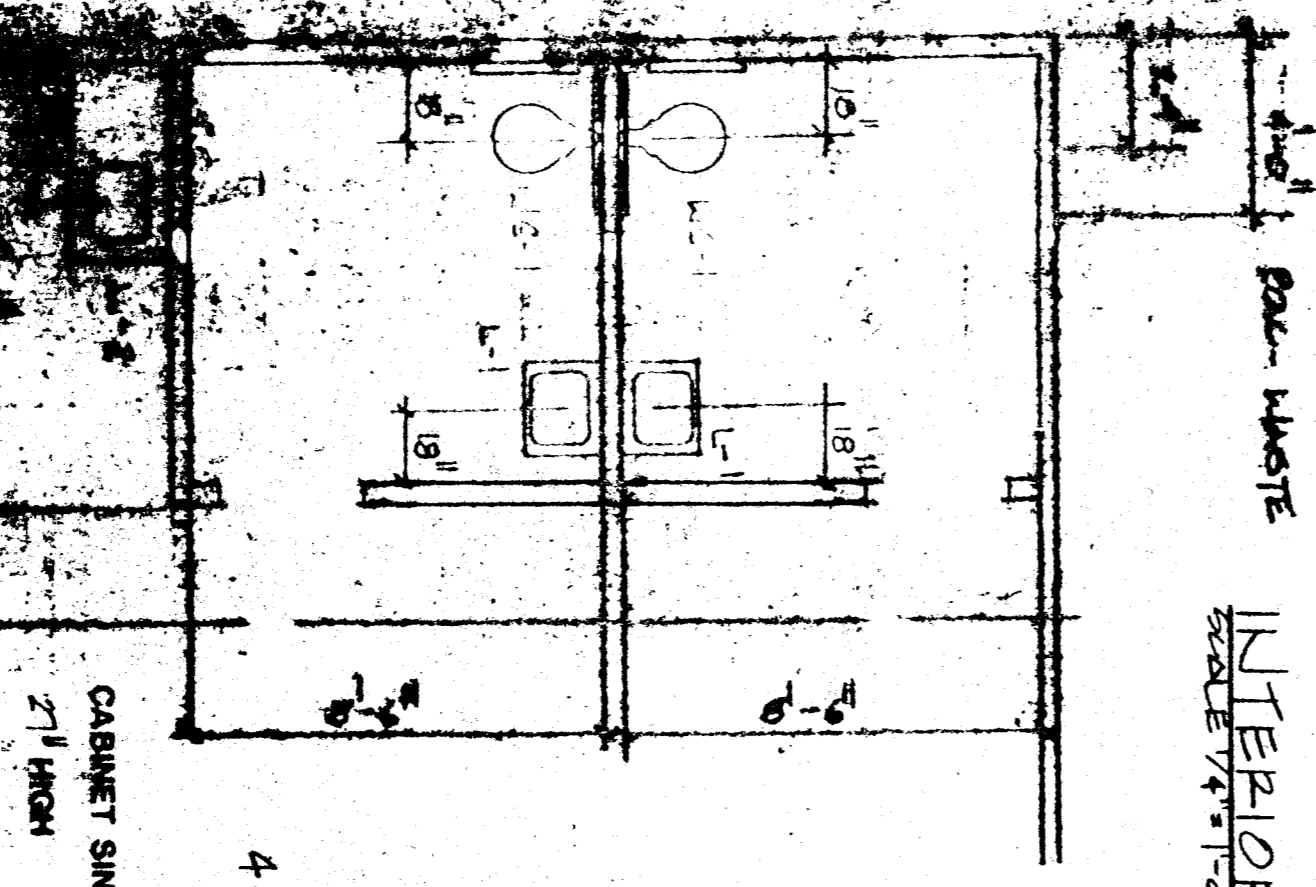
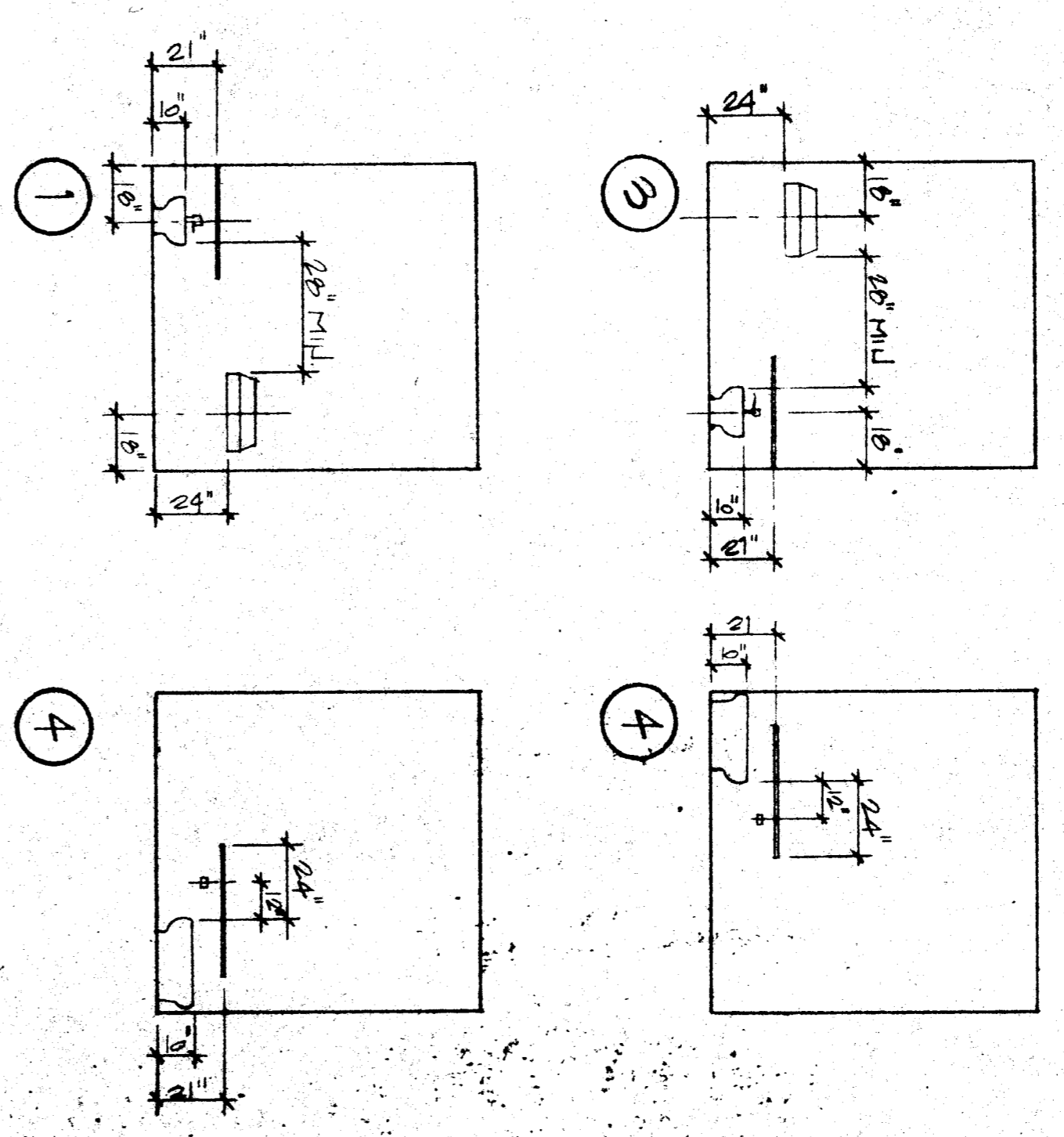


**FIXTURE SCHEDULE**

- L-1: KAMBER # K-2092 WITH LAMBE: 14031 SURFACES @ 27" TO TOP OF CMT.
- L-2: KAMBER # K-2110 WITH COILS # K-2093 GREEN LCA PANEL, KAMBER # K-758, MOUNT # W/ S/S COILS VALVE @ 27" TO TOP OF COILS.
- Lc-1: KAMBER # K-4138-ET PRIMARY TOILET W/ OLSOITE 210 SEAT, MOUNT 12" TO TOP OF SEAT.



**INTERIOR ELEVATIONS**



4 INTERIOR ELEVATION PREFERRED

NOTE:  
An Inspector who is mechanically qualified will be required on this project.

GLENN E. HARTZEL  
LICENS. ARCHITECT  
OFFICE: 1100 S. MAIN ST., ANAHEIM, CA 92805  
TEL: 714/941-1111  
FAX: 714/941-1112



**MODTECH, INC.**  
196 EAST MORGAN STREET  
PERRIS, CA, 92370 (914) 943-4014

FIRE MARSHAL

ACCESS COMPLIANCE

STRUCTURE NOTES

P-1