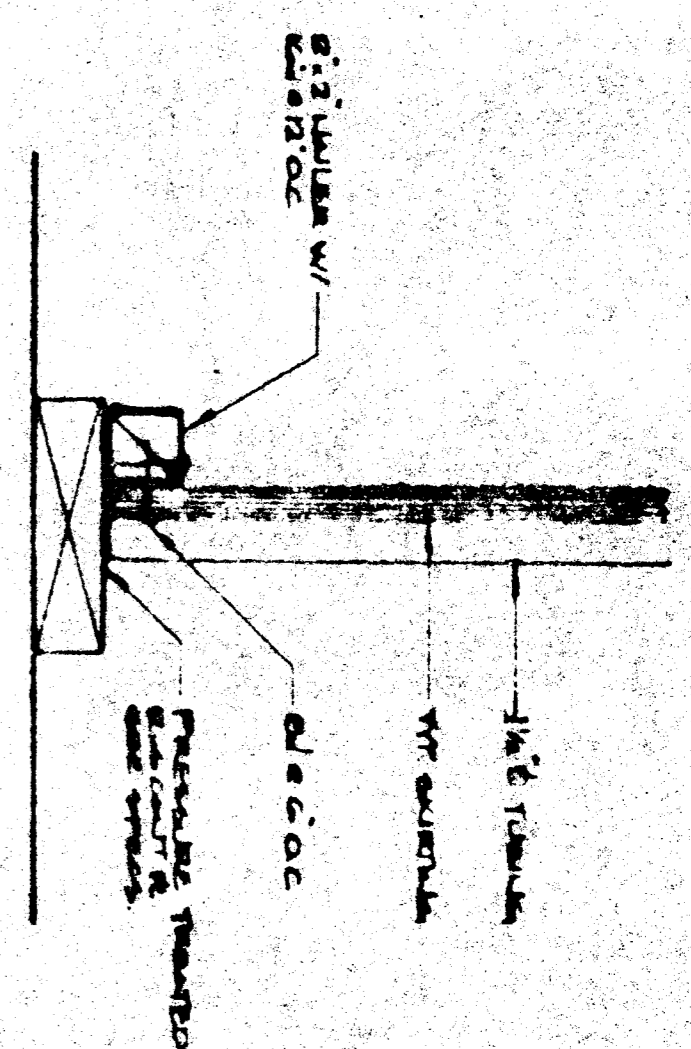
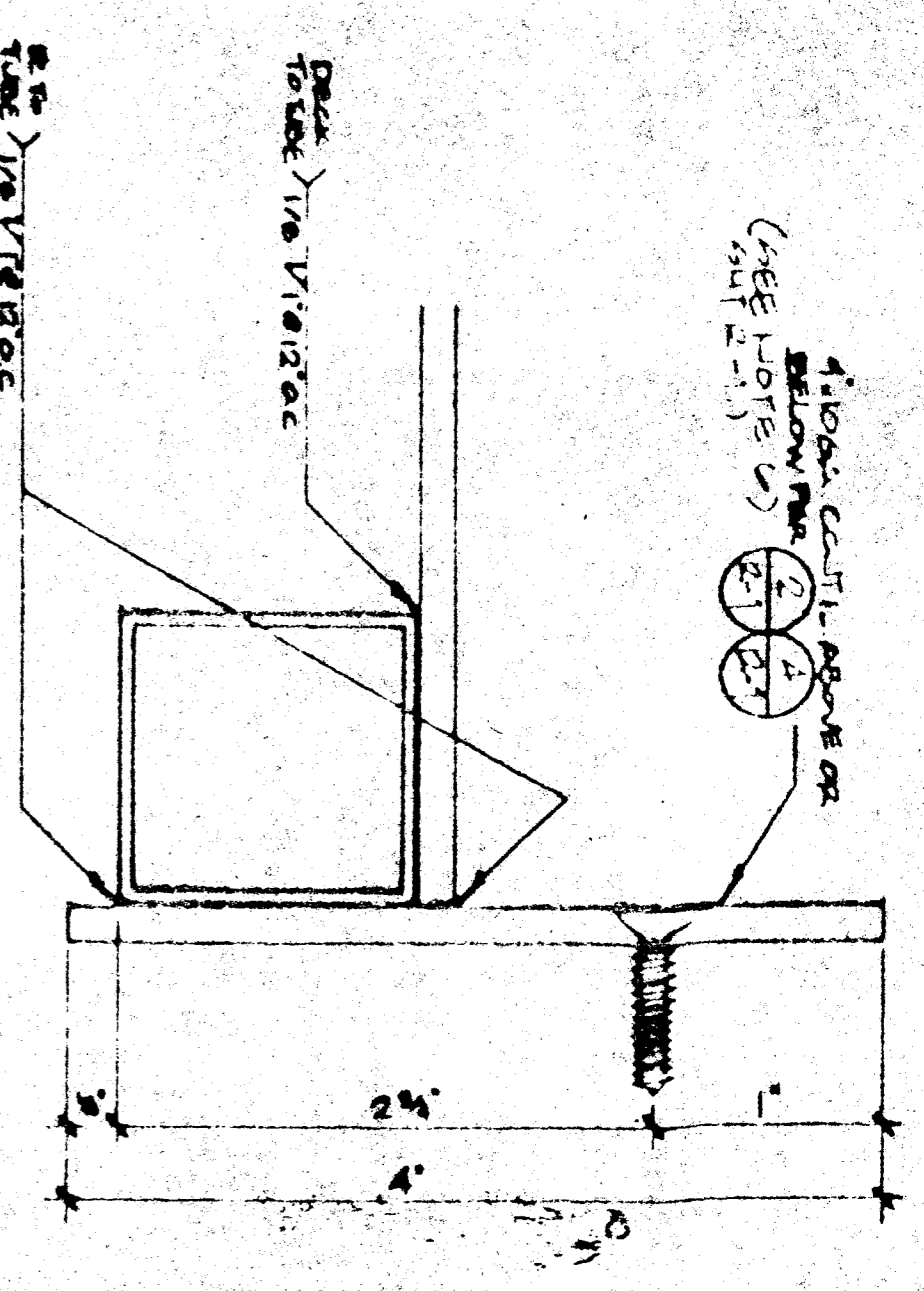


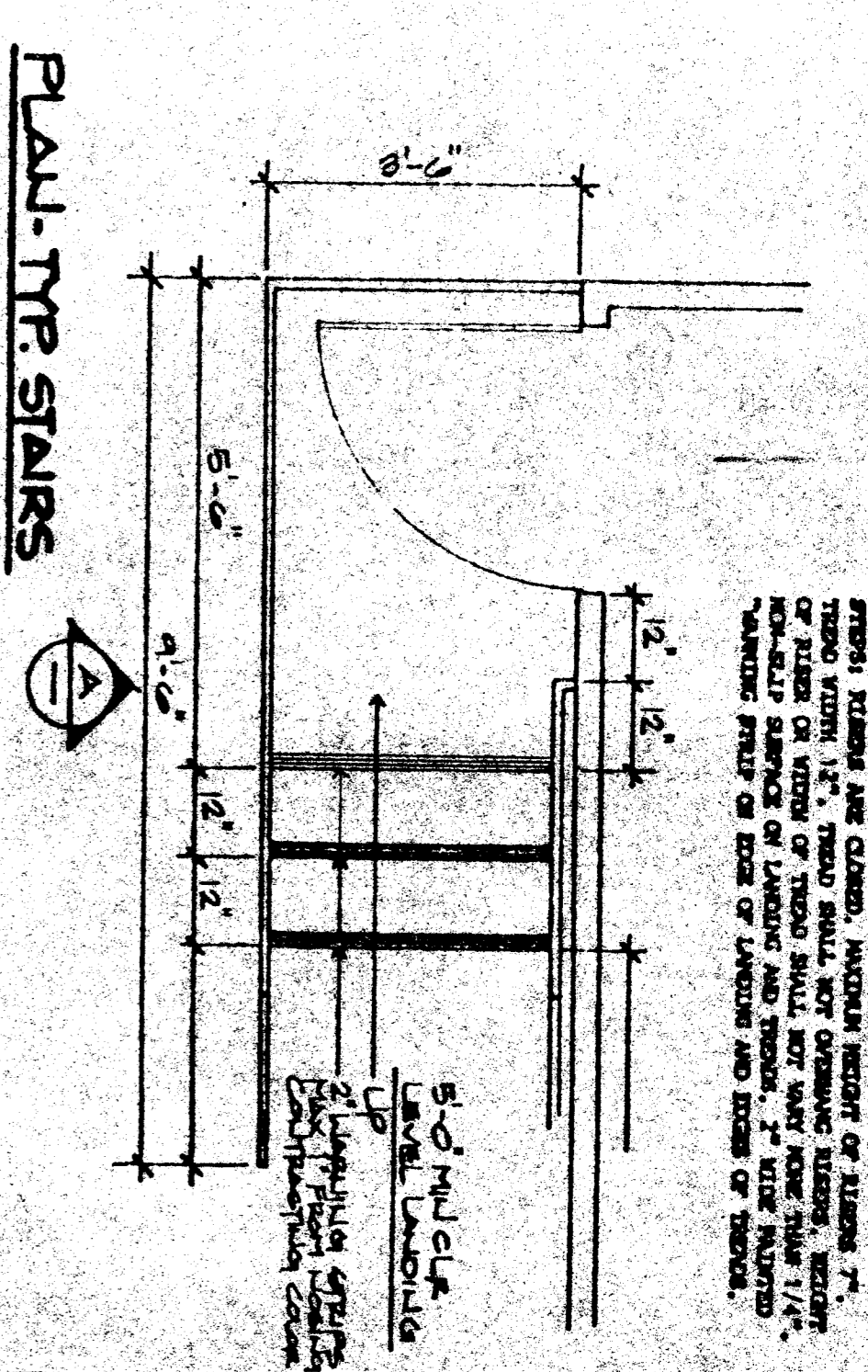
SECTION @ RAMP
SCALE 3/8" = 1'



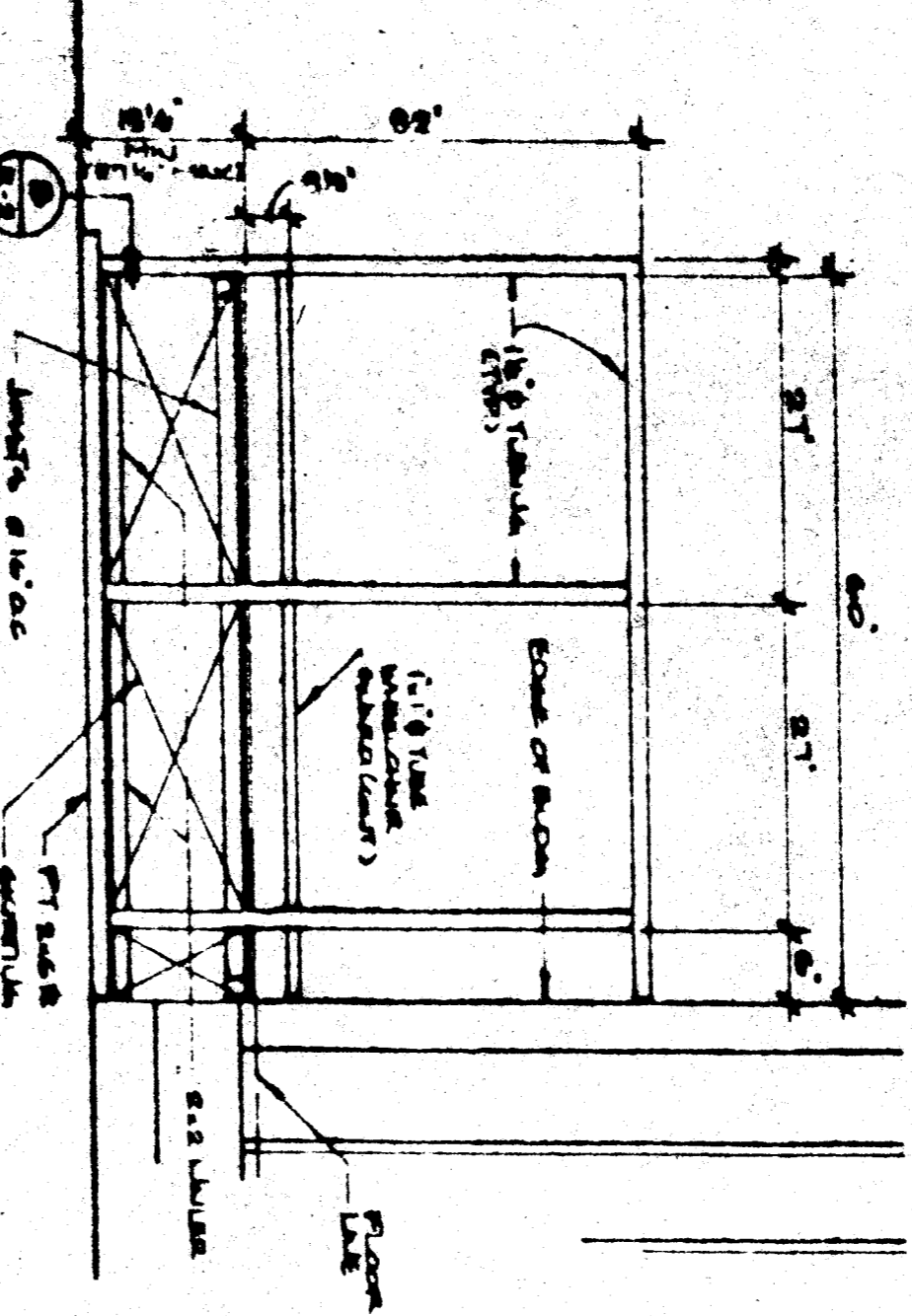
SKIRTING @ SILL PLATE
SCALE 3/8" = 1'



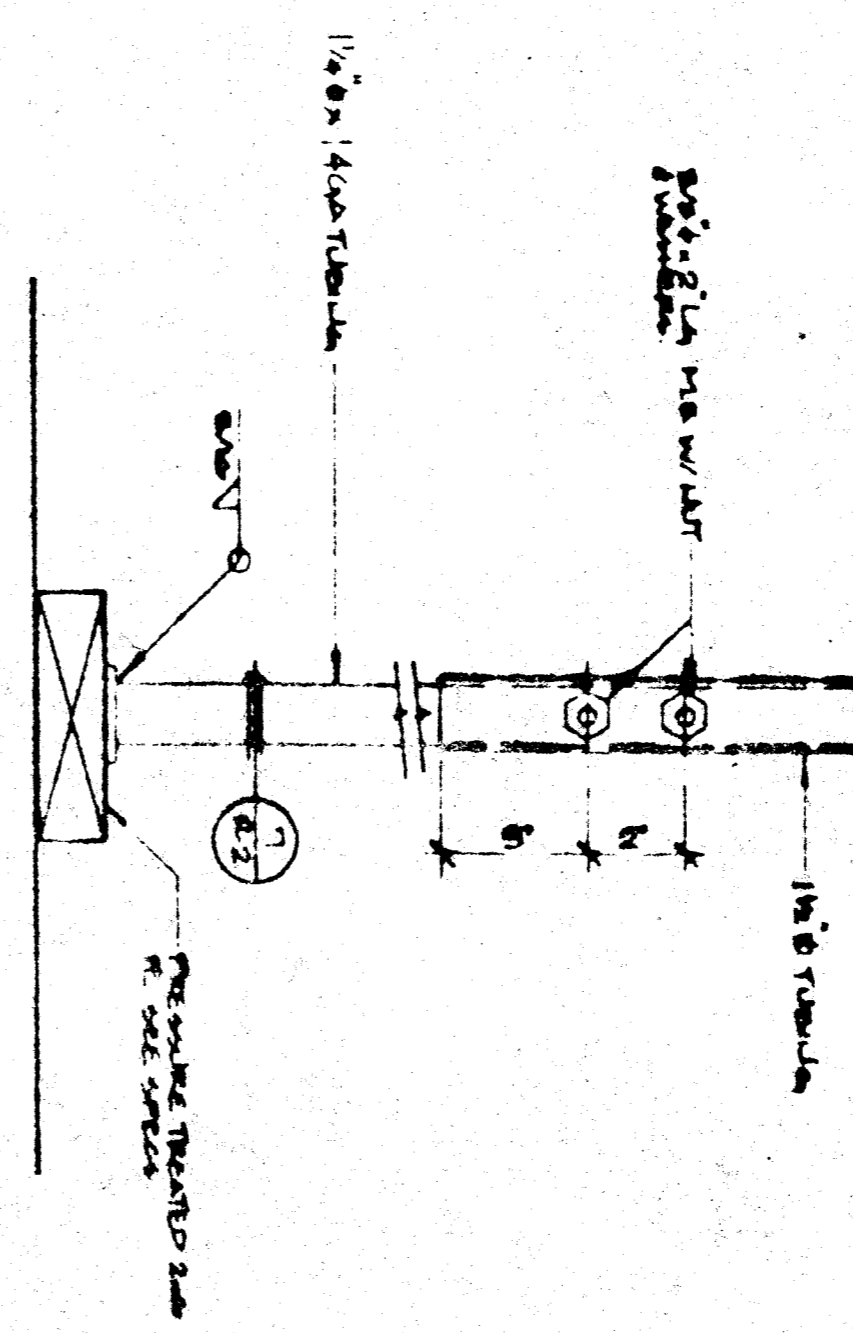
SECTION @ PLATE
SCALE FULL



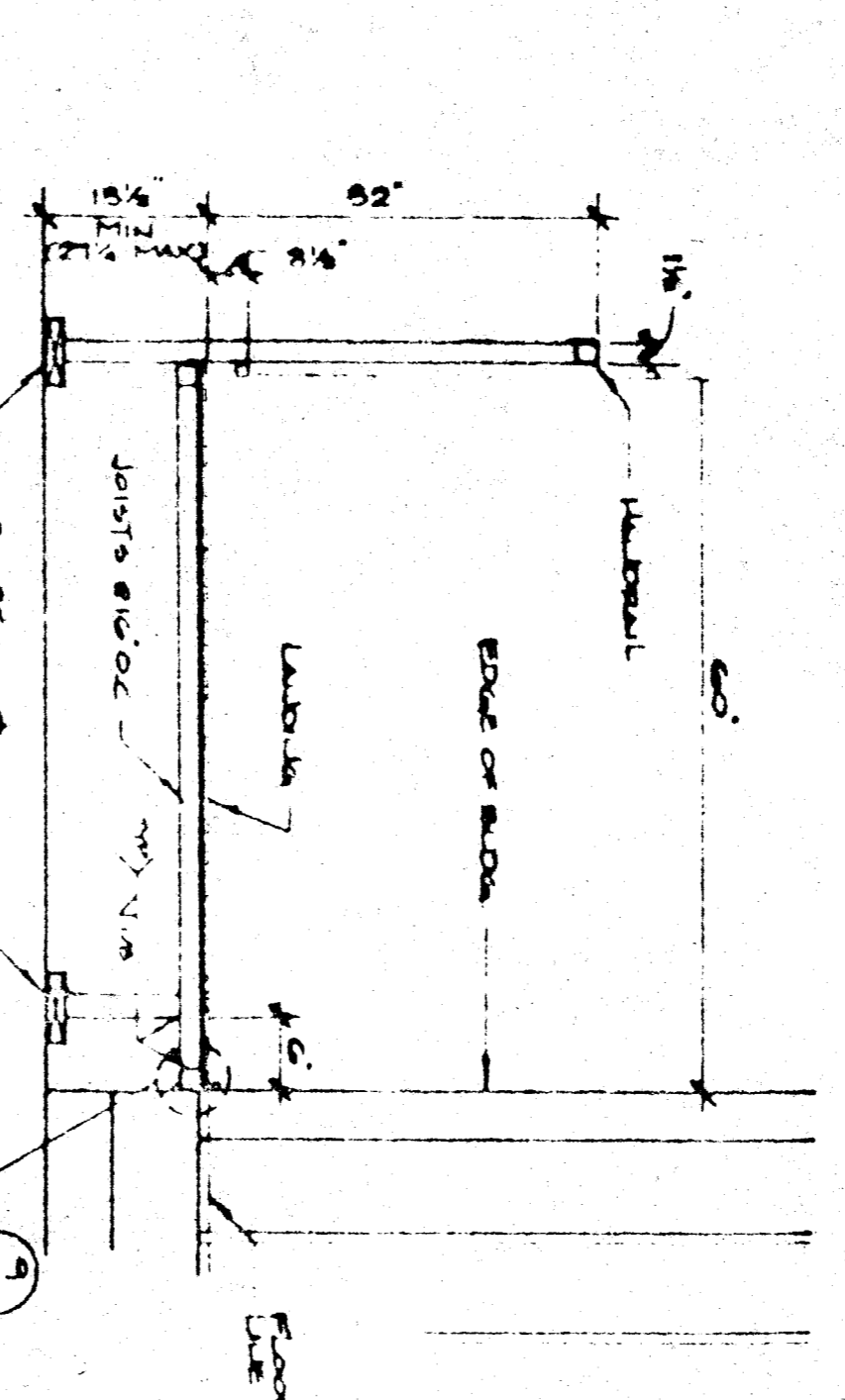
PLAY-TYP STAIRS
SCALE 3/8" = 1'



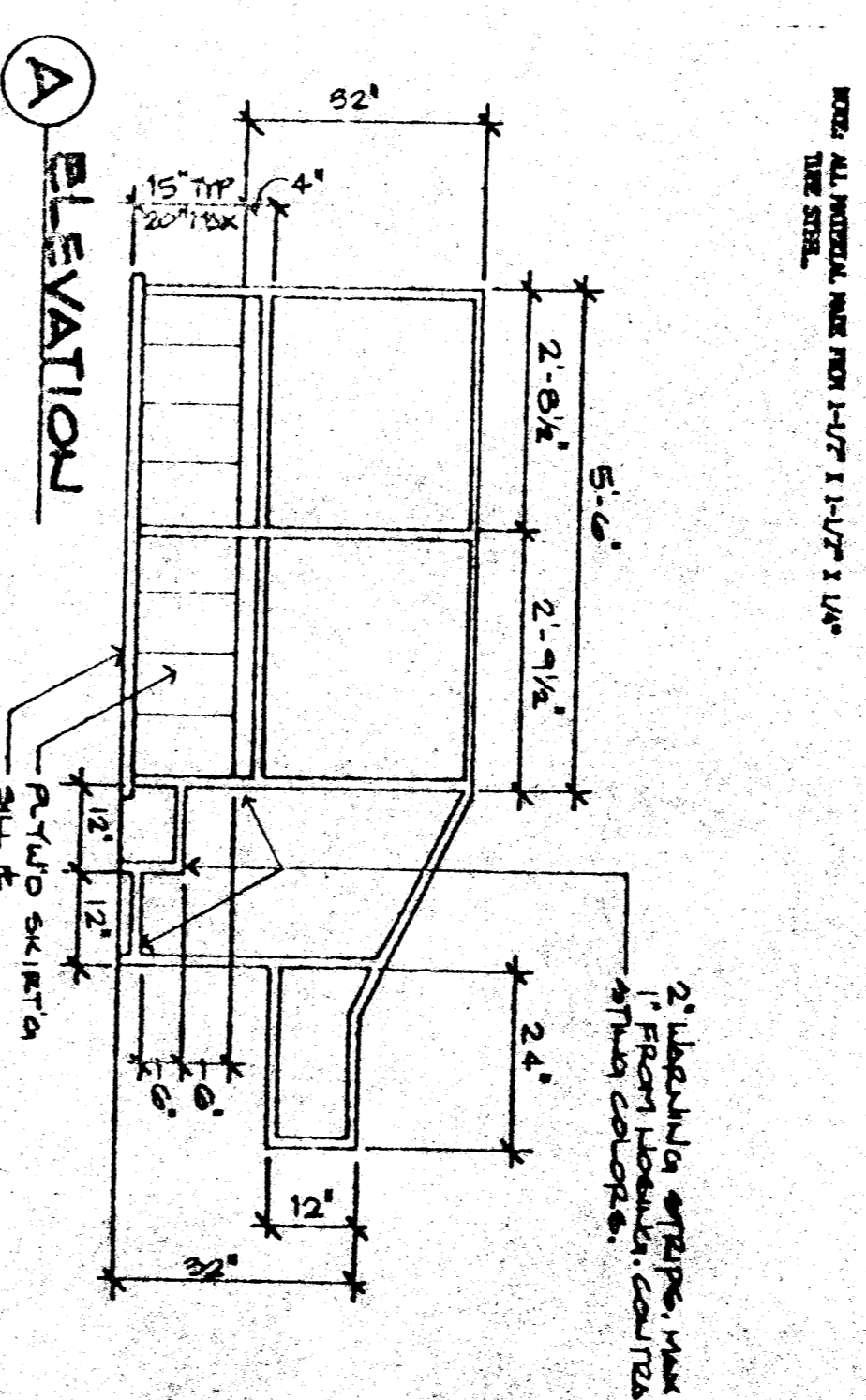
END ELEVATION
SCALE 3/8" = 1'



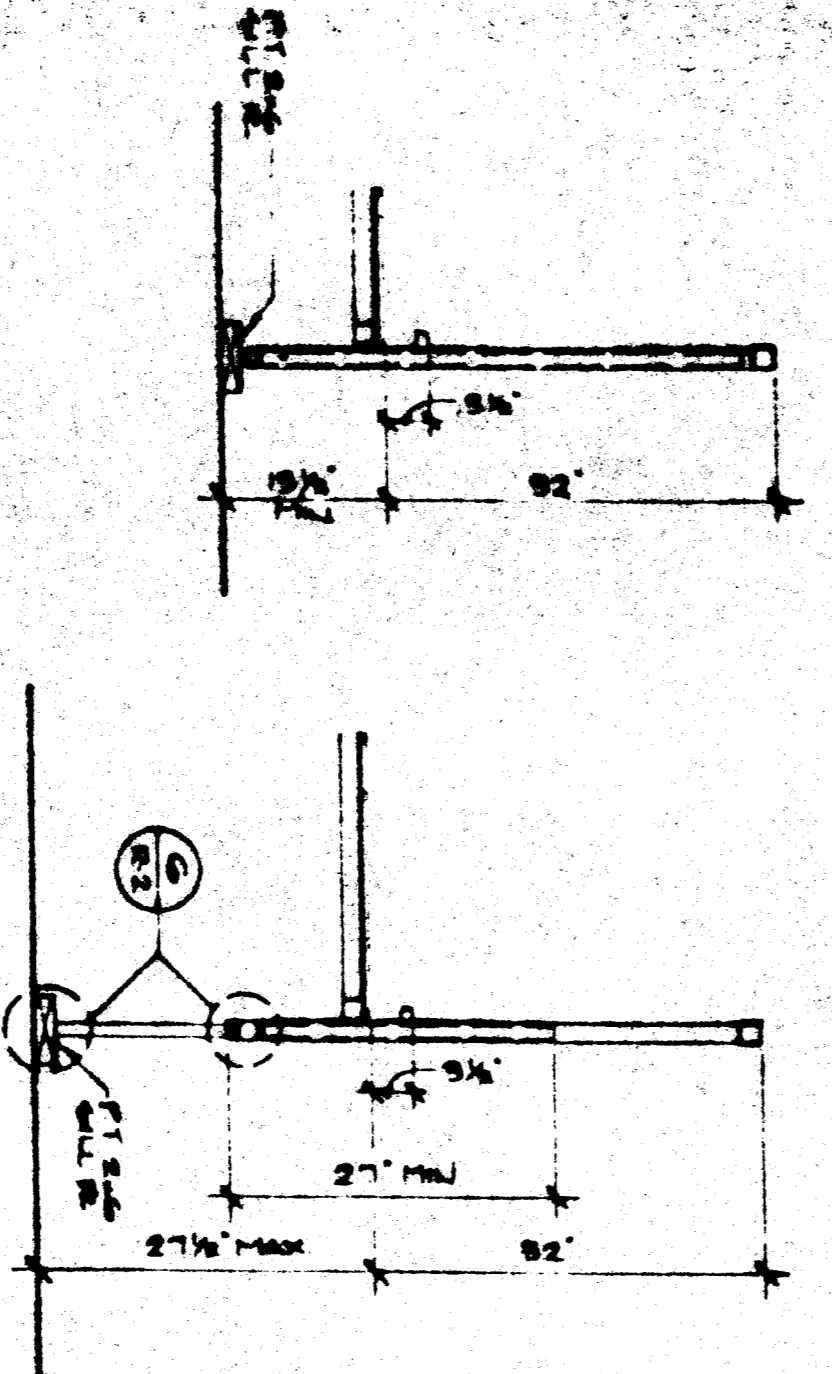
ADJUSTABLE LEG
SCALE 3/8" = 1'



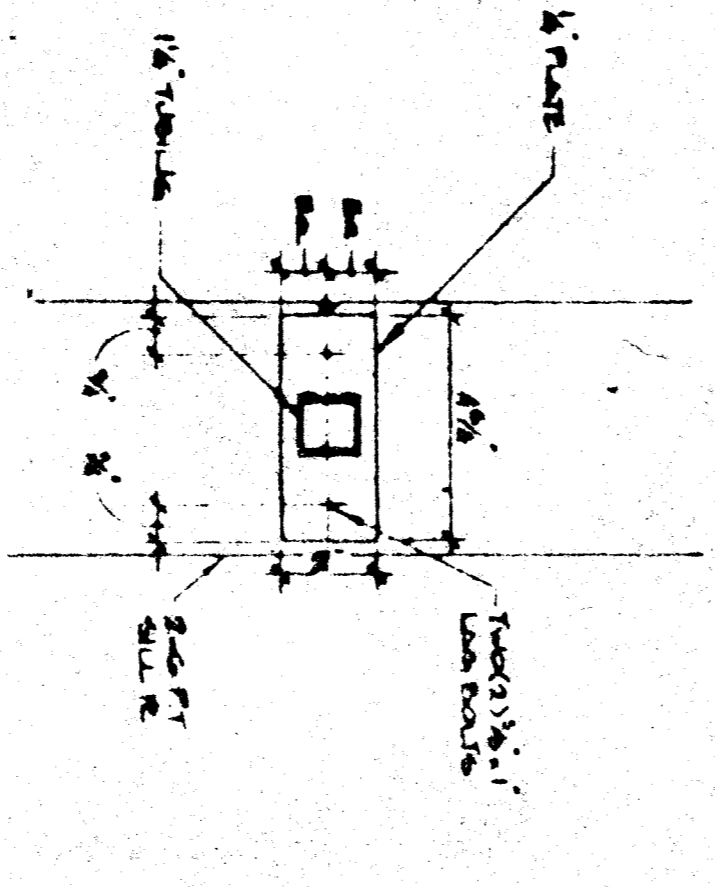
SECTION @ LANDING
SCALE 3/8" = 1'



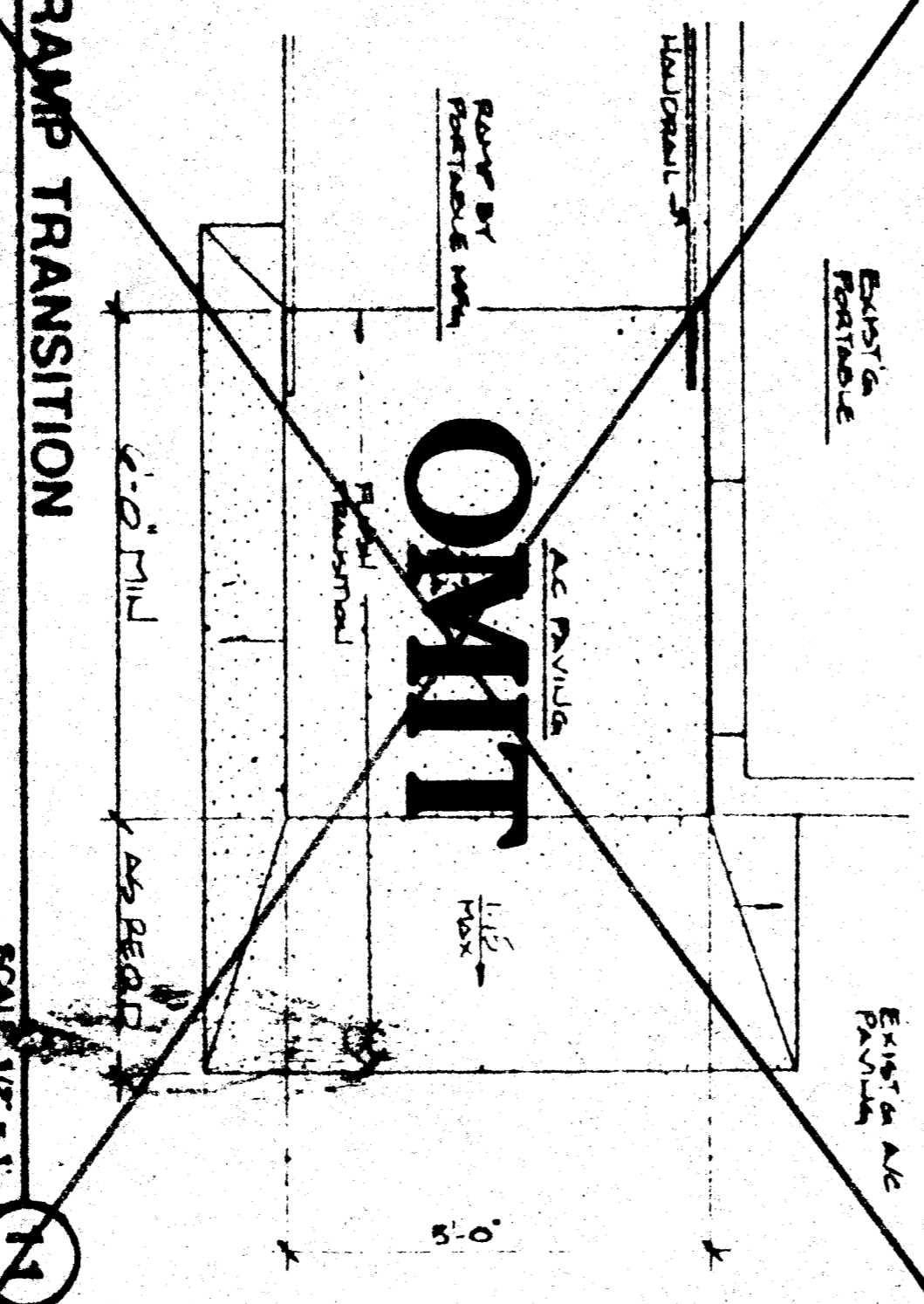
ELEVATION
SCALE 3/8" = 1'



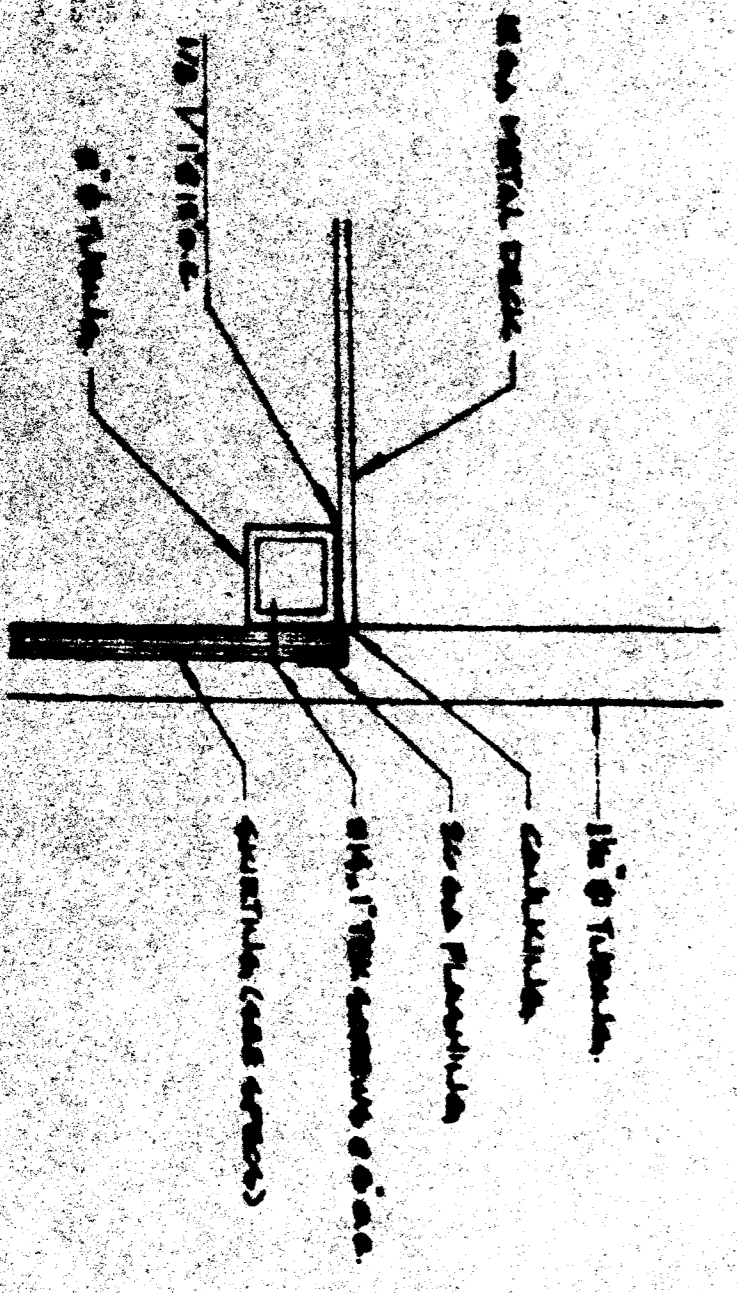
ADJUSTABLE LEG
SCALE 3/8" = 1'



BASE PLATE
SCALE 3/8" = 1'



RAMP TRANSITION
SCALE 1/2" = 1'



ADJUSTABLE LEG
SCALE 3/8" = 1'

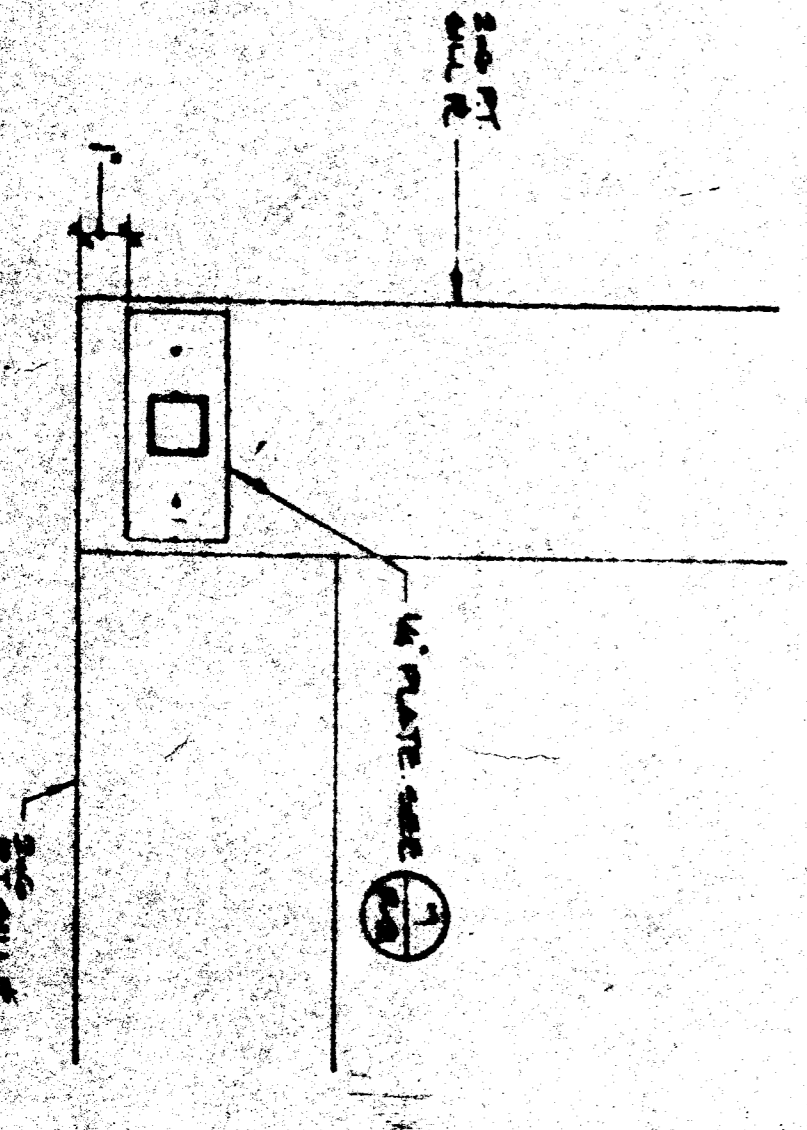
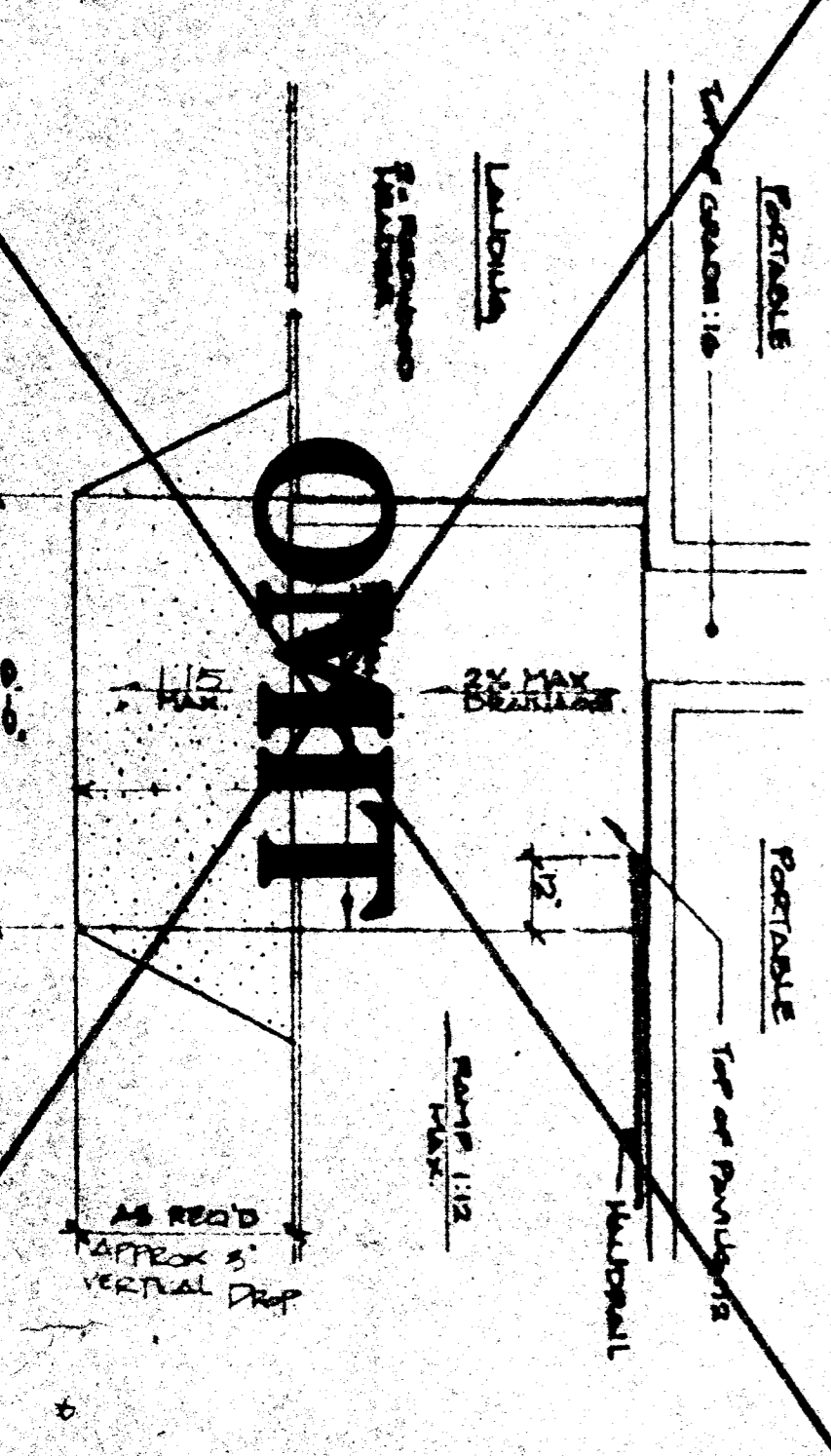


PLATE @ CORNER
SCALE 3/8" = 1'



RAMP TRANSITION
SCALE 3/8" = 1'

APPROVED
STATE AND MARSHAL
SOUTHERN REGION
SEP 5 1989

INDUSTRIATION TITLE
Department of the State Architect
SEP - 5 1989
SEP 0 5 91

OFFICE OF THE STATE ARCHITECT
ACCESS COMPLIANCE SECTION
SEP 0 5 91