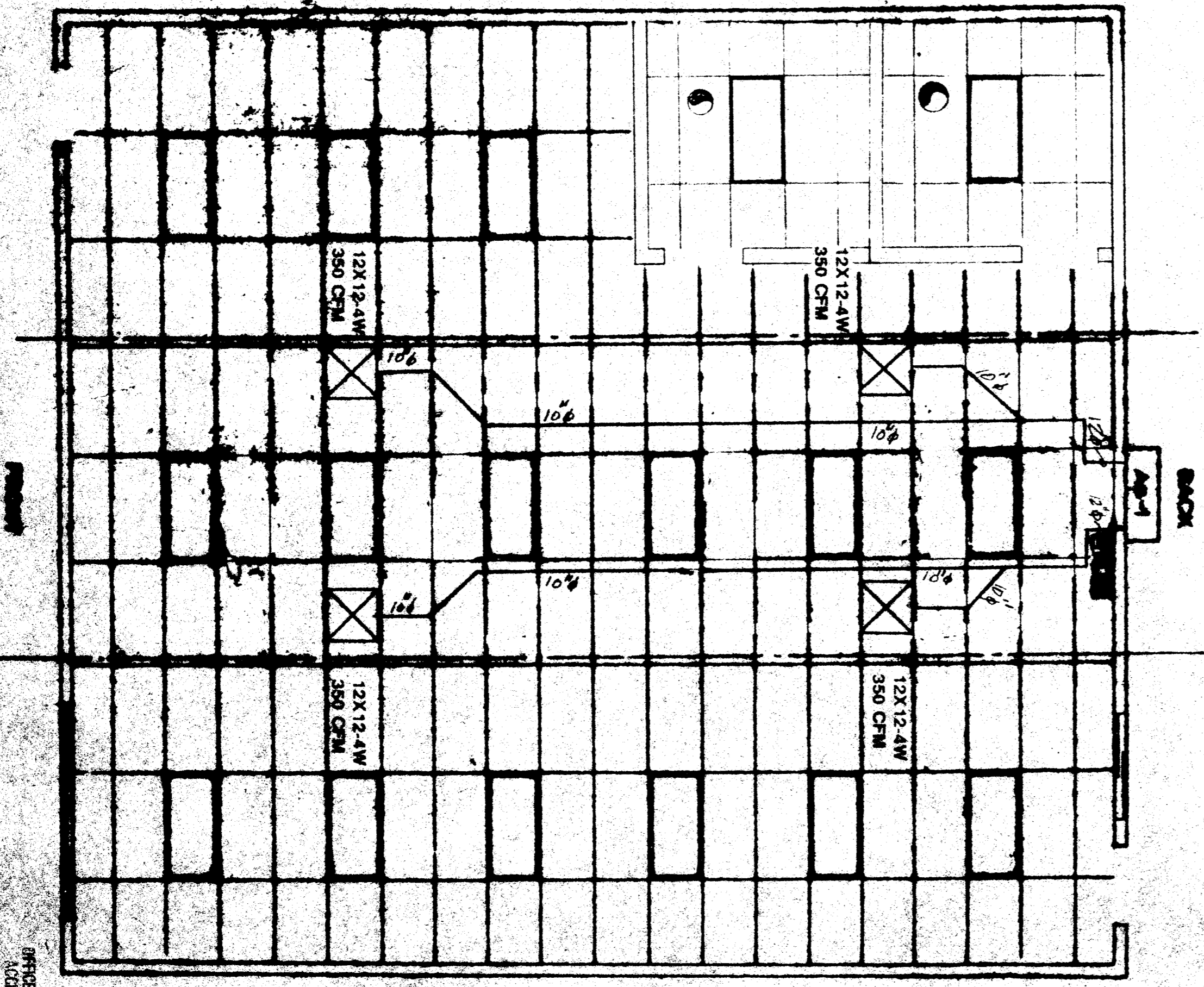


WIRING DIAGRAM

EQUIPMENT SCHEDULE

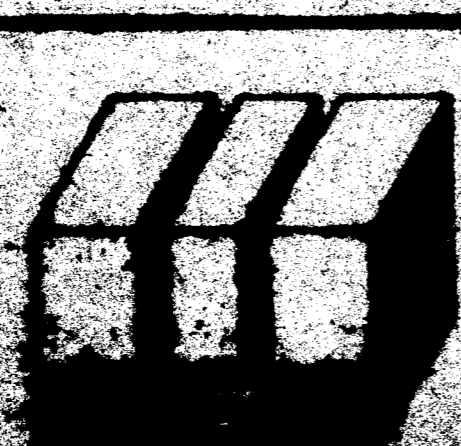
- 1 WALL MOUNTED HEAT PUMP UNIT
- 2 1/2 TON COOL/48,000 BTU/H HEAT
- 3 1/2 TON HEAT PUMP/48,000 BTU/H
- 4 1/2 TON HEAT PUMP/48,000 BTU/H
- 5 1/2 TON HEAT PUMP/48,000 BTU/H
- 6 1/2 TON HEAT PUMP/48,000 BTU/H
- 7 1/2 TON HEAT PUMP/48,000 BTU/H
- 8 1/2 TON HEAT PUMP/48,000 BTU/H
- 9 1/2 TON HEAT PUMP/48,000 BTU/H
- 10 1/2 TON HEAT PUMP/48,000 BTU/H
- 11 1/2 TON HEAT PUMP/48,000 BTU/H
- 12 1/2 TON HEAT PUMP/48,000 BTU/H
- 13 1/2 TON HEAT PUMP/48,000 BTU/H
- 14 1/2 TON HEAT PUMP/48,000 BTU/H
- 15 1/2 TON HEAT PUMP/48,000 BTU/H
- 16 1/2 TON HEAT PUMP/48,000 BTU/H
- 17 1/2 TON HEAT PUMP/48,000 BTU/H
- 18 1/2 TON HEAT PUMP/48,000 BTU/H
- 19 1/2 TON HEAT PUMP/48,000 BTU/H
- 20 1/2 TON HEAT PUMP/48,000 BTU/H
- 21 1/2 TON HEAT PUMP/48,000 BTU/H
- 22 1/2 TON HEAT PUMP/48,000 BTU/H
- 23 1/2 TON HEAT PUMP/48,000 BTU/H
- 24 1/2 TON HEAT PUMP/48,000 BTU/H
- 25 1/2 TON HEAT PUMP/48,000 BTU/H
- 26 1/2 TON HEAT PUMP/48,000 BTU/H
- 27 1/2 TON HEAT PUMP/48,000 BTU/H
- 28 1/2 TON HEAT PUMP/48,000 BTU/H
- 29 1/2 TON HEAT PUMP/48,000 BTU/H
- 30 1/2 TON HEAT PUMP/48,000 BTU/H
- 31 1/2 TON HEAT PUMP/48,000 BTU/H
- 32 1/2 TON HEAT PUMP/48,000 BTU/H
- 33 1/2 TON HEAT PUMP/48,000 BTU/H
- 34 1/2 TON HEAT PUMP/48,000 BTU/H
- 35 1/2 TON HEAT PUMP/48,000 BTU/H
- 36 1/2 TON HEAT PUMP/48,000 BTU/H
- 37 1/2 TON HEAT PUMP/48,000 BTU/H
- 38 1/2 TON HEAT PUMP/48,000 BTU/H
- 39 1/2 TON HEAT PUMP/48,000 BTU/H
- 40 1/2 TON HEAT PUMP/48,000 BTU/H
- 41 1/2 TON HEAT PUMP/48,000 BTU/H
- 42 1/2 TON HEAT PUMP/48,000 BTU/H
- 43 1/2 TON HEAT PUMP/48,000 BTU/H
- 44 1/2 TON HEAT PUMP/48,000 BTU/H
- 45 1/2 TON HEAT PUMP/48,000 BTU/H
- 46 1/2 TON HEAT PUMP/48,000 BTU/H
- 47 1/2 TON HEAT PUMP/48,000 BTU/H
- 48 1/2 TON HEAT PUMP/48,000 BTU/H
- 49 1/2 TON HEAT PUMP/48,000 BTU/H
- 50 1/2 TON HEAT PUMP/48,000 BTU/H
- 51 1/2 TON HEAT PUMP/48,000 BTU/H
- 52 1/2 TON HEAT PUMP/48,000 BTU/H
- 53 1/2 TON HEAT PUMP/48,000 BTU/H
- 54 1/2 TON HEAT PUMP/48,000 BTU/H
- 55 1/2 TON HEAT PUMP/48,000 BTU/H
- 56 1/2 TON HEAT PUMP/48,000 BTU/H
- 57 1/2 TON HEAT PUMP/48,000 BTU/H
- 58 1/2 TON HEAT PUMP/48,000 BTU/H
- 59 1/2 TON HEAT PUMP/48,000 BTU/H
- 60 1/2 TON HEAT PUMP/48,000 BTU/H
- 61 1/2 TON HEAT PUMP/48,000 BTU/H
- 62 1/2 TON HEAT PUMP/48,000 BTU/H
- 63 1/2 TON HEAT PUMP/48,000 BTU/H
- 64 1/2 TON HEAT PUMP/48,000 BTU/H
- 65 1/2 TON HEAT PUMP/48,000 BTU/H
- 66 1/2 TON HEAT PUMP/48,000 BTU/H
- 67 1/2 TON HEAT PUMP/48,000 BTU/H
- 68 1/2 TON HEAT PUMP/48,000 BTU/H
- 69 1/2 TON HEAT PUMP/48,000 BTU/H
- 70 1/2 TON HEAT PUMP/48,000 BTU/H
- 71 1/2 TON HEAT PUMP/48,000 BTU/H
- 72 1/2 TON HEAT PUMP/48,000 BTU/H
- 73 1/2 TON HEAT PUMP/48,000 BTU/H
- 74 1/2 TON HEAT PUMP/48,000 BTU/H
- 75 1/2 TON HEAT PUMP/48,000 BTU/H
- 76 1/2 TON HEAT PUMP/48,000 BTU/H
- 77 1/2 TON HEAT PUMP/48,000 BTU/H
- 78 1/2 TON HEAT PUMP/48,000 BTU/H
- 79 1/2 TON HEAT PUMP/48,000 BTU/H
- 80 1/2 TON HEAT PUMP/48,000 BTU/H
- 81 1/2 TON HEAT PUMP/48,000 BTU/H
- 82 1/2 TON HEAT PUMP/48,000 BTU/H
- 83 1/2 TON HEAT PUMP/48,000 BTU/H
- 84 1/2 TON HEAT PUMP/48,000 BTU/H
- 85 1/2 TON HEAT PUMP/48,000 BTU/H
- 86 1/2 TON HEAT PUMP/48,000 BTU/H
- 87 1/2 TON HEAT PUMP/48,000 BTU/H
- 88 1/2 TON HEAT PUMP/48,000 BTU/H
- 89 1/2 TON HEAT PUMP/48,000 BTU/H
- 90 1/2 TON HEAT PUMP/48,000 BTU/H
- 91 1/2 TON HEAT PUMP/48,000 BTU/H
- 92 1/2 TON HEAT PUMP/48,000 BTU/H
- 93 1/2 TON HEAT PUMP/48,000 BTU/H
- 94 1/2 TON HEAT PUMP/48,000 BTU/H
- 95 1/2 TON HEAT PUMP/48,000 BTU/H
- 96 1/2 TON HEAT PUMP/48,000 BTU/H
- 97 1/2 TON HEAT PUMP/48,000 BTU/H
- 98 1/2 TON HEAT PUMP/48,000 BTU/H
- 99 1/2 TON HEAT PUMP/48,000 BTU/H
- 100 1/2 TON HEAT PUMP/48,000 BTU/H



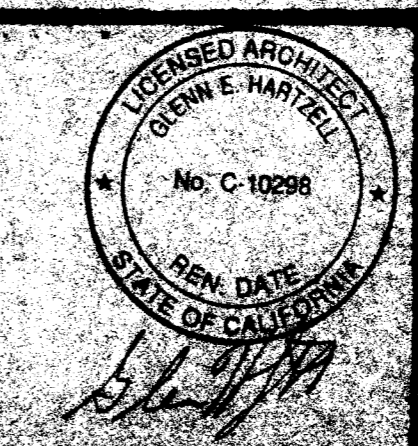
AIR CONDITIONING PLAN

IDENTIFICATION STATE
 Department of General Services
 Office of the State Architect
 SEP - 5 1987
 Structural Safety Section
 Project # 8-6-5-0-7
 17/83
 FIRE AND PUBLIC SMOKE
 STATE FIRE INSPECTION
 DIVISION
 SEP - 3 1987
 OFFICE OF THE STATE ARCHITECT
 ACCESS COMPLIANCE SECTION
 5,696.0
 SEP 5 '81

#1460
 KERN CO. ECONOMIC
 OPPORTUNITY CORP.



MODTECH, INC.
 108 EAST MORGAN STREET
 PERRIS, CA. 92506 971-340-4014



| | |
|---------|--|
| DATE | |
| BY | |
| SCALE | |
| PROJECT | |
| NO. | |