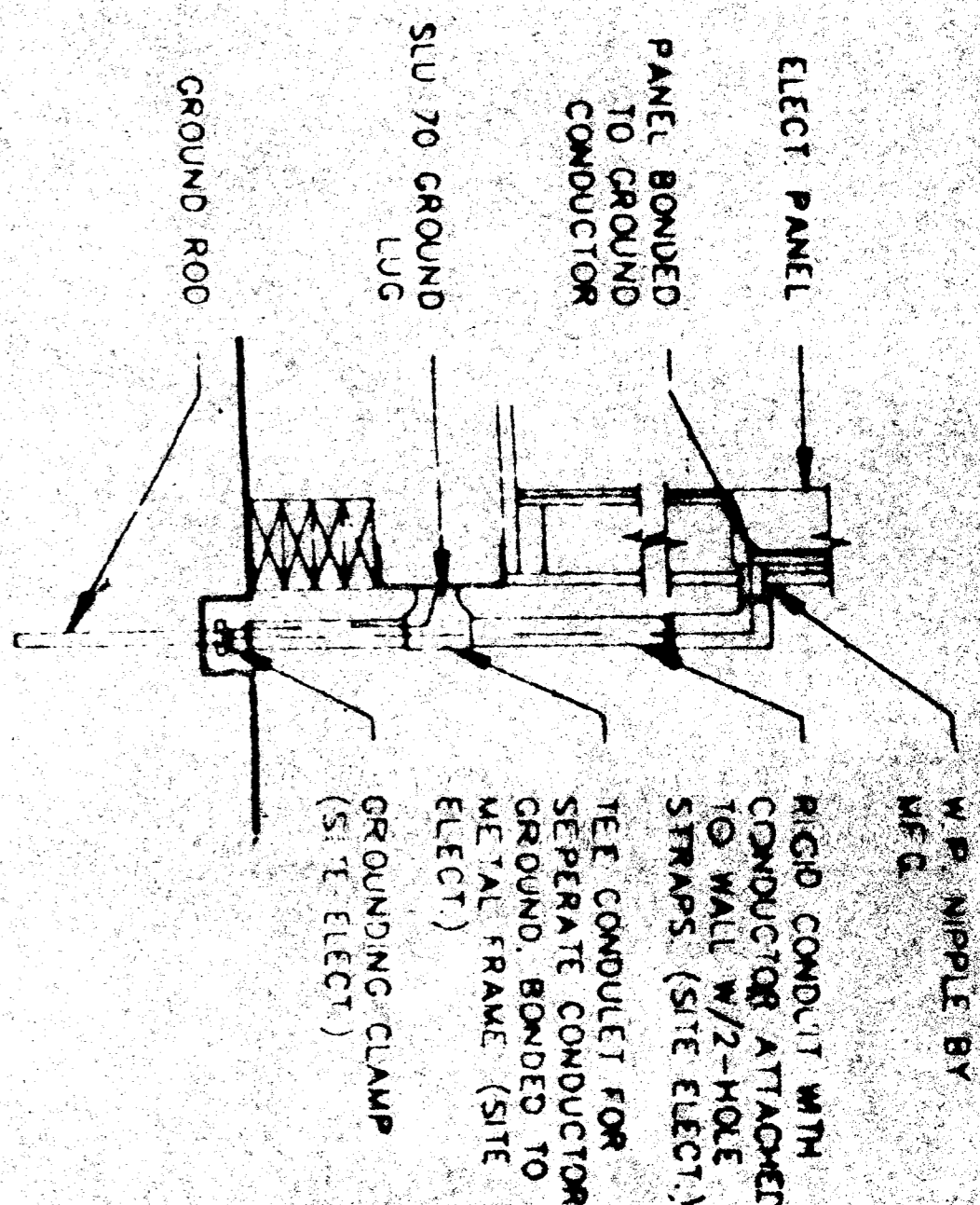


JUMPER @ MOD. LINE



TYPICAL GROUNDING DETAIL

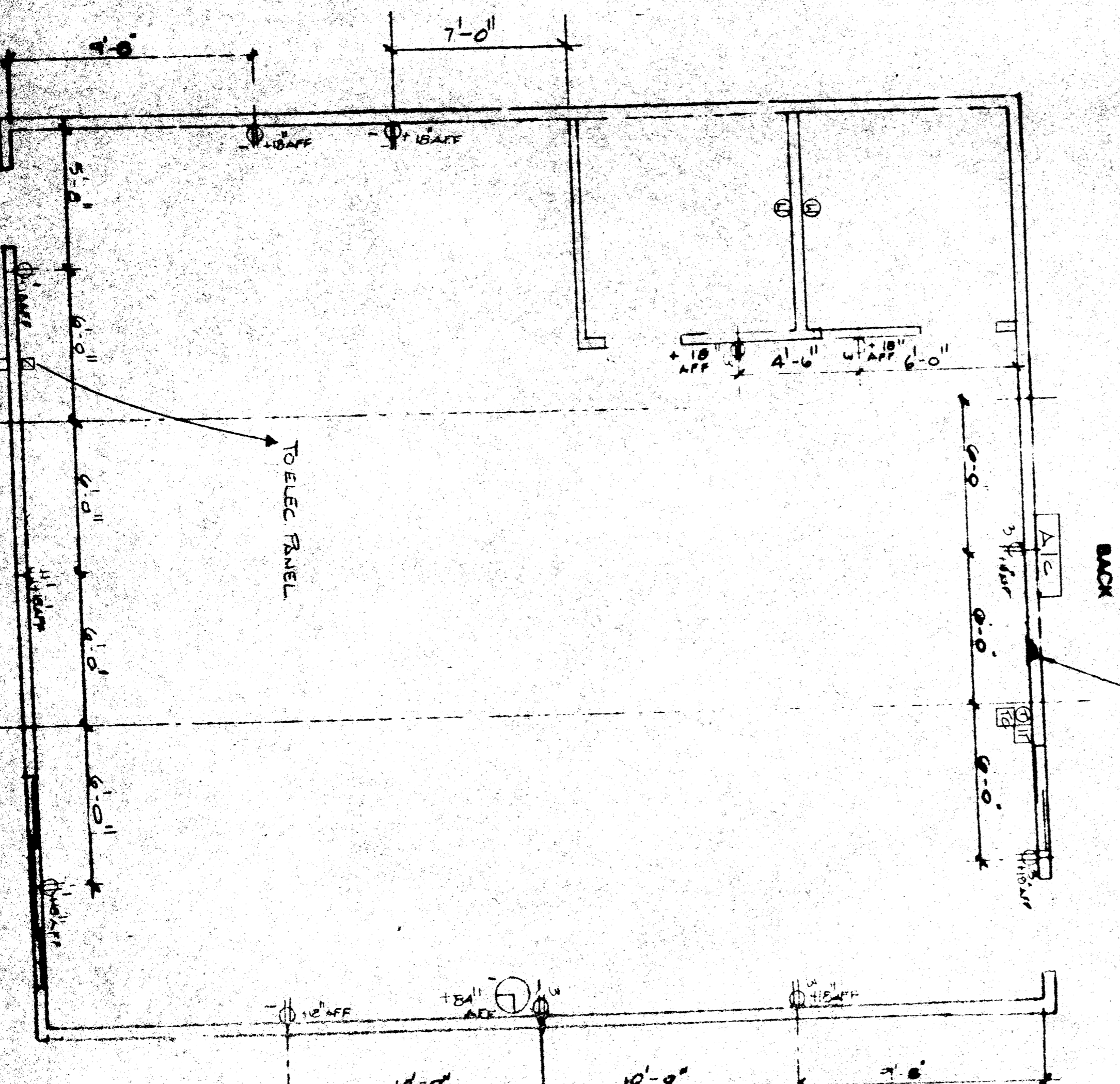
SYMBOLS LIST

- ① THERMOSTATE (LOCKED AUTO-MATIC) -SEE SPECS (+4B)
- ② TUNE FLUORESCENT LIGHT FIXTURE -SEE SPECS
- ③ INCANDESCENT BRACKET LIGHT FIXTURE -SEE SPECS
- ④ DUPLEX WALL RECEPTACLE, 15-A 125-V 3-WIRE GROUNDING TYPE (+1B)
- ⑤ SWITCH SINGLE POLE (44B)
- ⑥ FIRE ALARM PULL STATION -SEE SPECS (+4B)
- ⑦ FIRE ALARM HORN -SEE SPECS (+8-07)
- ⑧ FUSED DISCONNECT SWITCH RAINTIGHT
- ⑨ THERMOSTATE (LOCKED AUTO-MATIC) -SEE SPECS (+4B)
- ⑩ 6 HR. INTERVAL B-PASS TIMER
- ⑪ CLOCK (7-07)
- ⑫ TIME CLOCK (FLASH HTS)
- ⑬ FLOOR #/16
- ⑭ LAMPING LIGHTS (4-1-01)

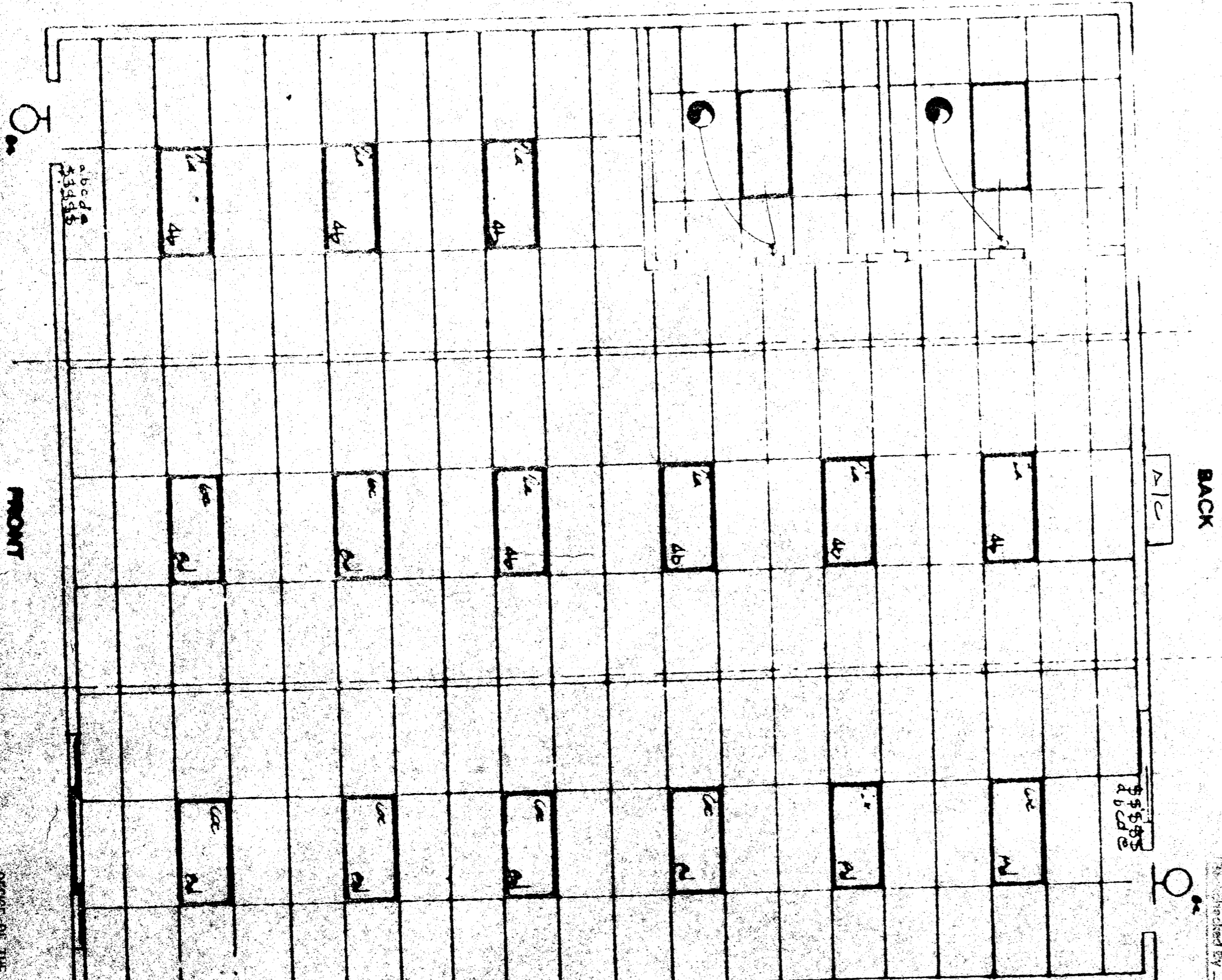
NOTES

1. EACH BUILDING SHALL BE SEPARATELY GROUND TO WITH A 3/4" RD. # 6 COPPER/CLAD STEEL GROUND ROD WHERE ROCK BOTTOM IS ENCOUNTERED. ROD SHALL BE LIVEN AT AN ANGLE NOT TO EXCEED 45 DEGREES FROM THE VERTICAL OR SHALL BE BURIED IN A TRENCH THAT IS AT LEAST 36" DEEP. (BY SITE ELECTRICAL)
2. TESTING: TEST FOR RESISTANCE TO GROUND. IF RESISTANCE EXCEEDS 25 OHMS, INSTALL ADDITIONAL GROUND RODS SEPARATED AT LEAST 6' OR LESS. (BY SITE ELECTRICAL)
3. PROVIDE EQUIPMENT ANCHORAGE PER TITLE 24, TABLE 2-23J, PART B.
4. APPROVAL OF THIS PLAN DOES NOT CONSTITUTE APPROVAL OF THIS FIRE ALARM FOR ALL SITES. THE FIRE ALARM SYSTEM AND/OR COMPONENTS MAY BE REQUIRED TO BE CHANGED DUE TO SITE LOCATION, EXISTING CONDITIONS OR INCOMPATIBLE COMPONENTS.

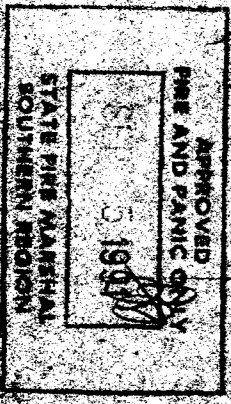
PANEL	FLOOR	WALL	1 WOOD	MAIN CB	100 A
VOLTS	120/208	120	208	100	100
PHASE	3	3	3	3	3
WIRE	120	120	120	120	120
CONDUCTOR	120	120	120	120	120
INSULATION	120	120	120	120	120
1	120	120	120	120	120
2	120	120	120	120	120
3	120	120	120	120	120
4	120	120	120	120	120
5	120	120	120	120	120
6	120	120	120	120	120
7	120	120	120	120	120
8	120	120	120	120	120
9	120	120	120	120	120
10	120	120	120	120	120
11	120	120	120	120	120
12	120	120	120	120	120
13	120	120	120	120	120
14	120	120	120	120	120
15	120	120	120	120	120
16	120	120	120	120	120
17	120	120	120	120	120
18	120	120	120	120	120
19	120	120	120	120	120
TOTALS					
LCL	10/40+				
OTHER					



ELECTRICAL PLAN



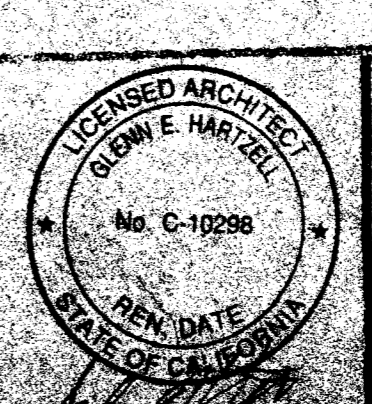
LIGHTING PLAN



APPROVED BY  
DATE: 5/10/91  
5/9/91



**MODTECH, INC.**  
105 EAST MCGAN STREET  
PERRIS, CA 92469 (714) 843-4011



REGISTERED ARCHITECT  
GLEN E. HARPER  
No. C-10298  
FIRE MARSHAL

RELOCATABLE CLASSROOM BUILDINGS  
#1780  
KERN CO. ECONOMIC OPPORTUNITY CORP.