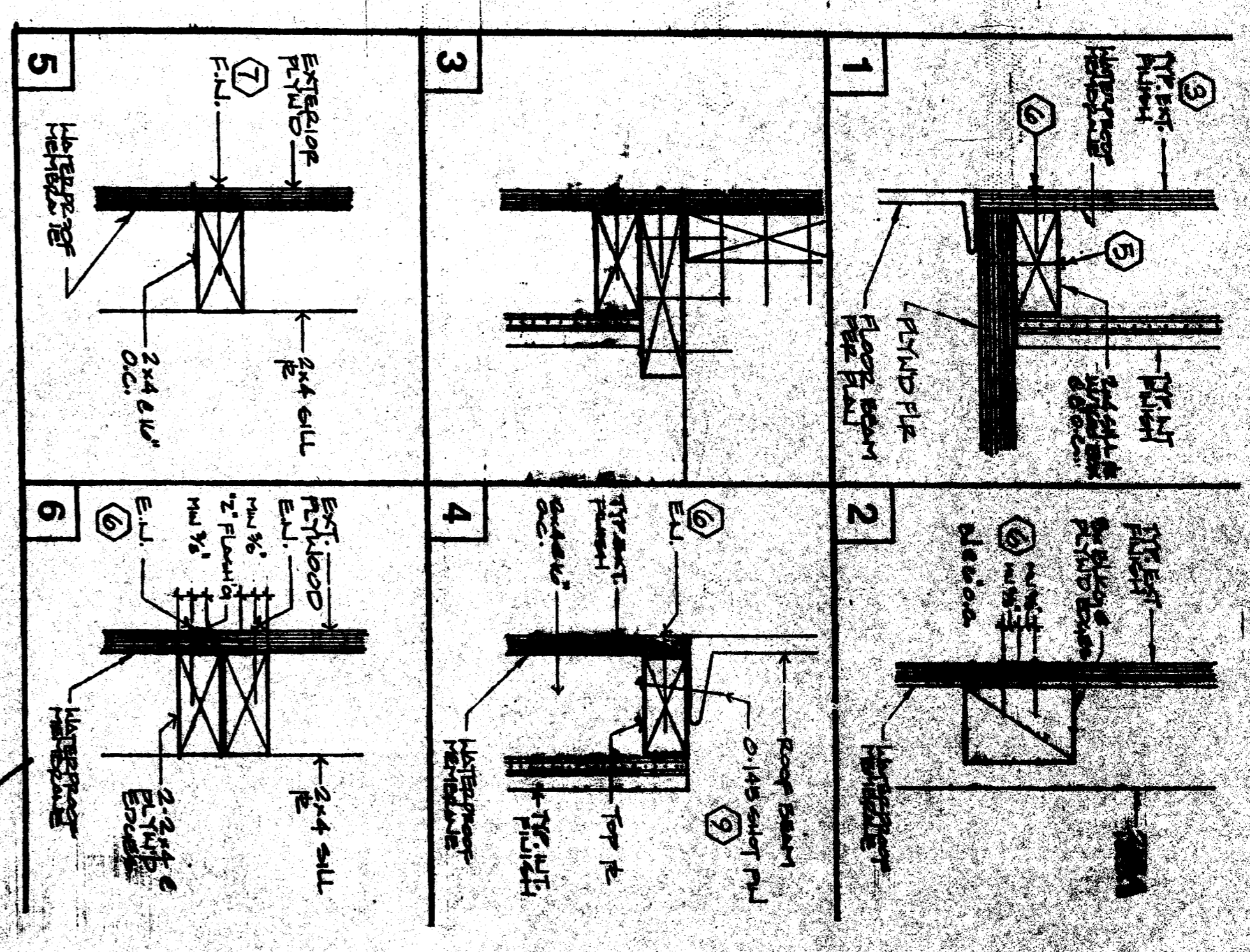


- NOTES**
1. ALL EXTERIOR WALLS TO BE GALVANIZED POX.
 2. 2x4 STUDS 30x36x8 BR #2 @ 16" O.C. (TYP)
 3. EXTERIOR PLWOOD SING. SUEATING NAIL WITH GALV. BOX NAIL @ 8" O.C. EDGES, 8" @ 12" O.C. (TYP)
 4. 2x4 TRUSS 12/12 @ 16" O.C.
 5. 2x4 TRUSS 12/12 @ 16" O.C.
 6. 2x4 TRUSS 12/12 @ 16" O.C.
 7. 2x4 TRUSS 12/12 @ 16" O.C.
 8. 2x4 TRUSS 12/12 @ 16" O.C.
 9. 2x4 TRUSS 12/12 @ 16" O.C.
 10. 2x4 TRUSS 12/12 @ 16" O.C.



APPROVED FOR THE STATE OF CALIFORNIA
 SEP 5 1991
 KERN COUNTY ECONOMIC OPPORTUNITY CORP.

MODTECH
 196 EAST MORGAN
 BURBANK, CA 92310

LICENSED ARCHITECT
 JOHN E. HARRIS
 No. C-10298
 EXPIRES 12/31/91
 STATE OF CALIFORNIA