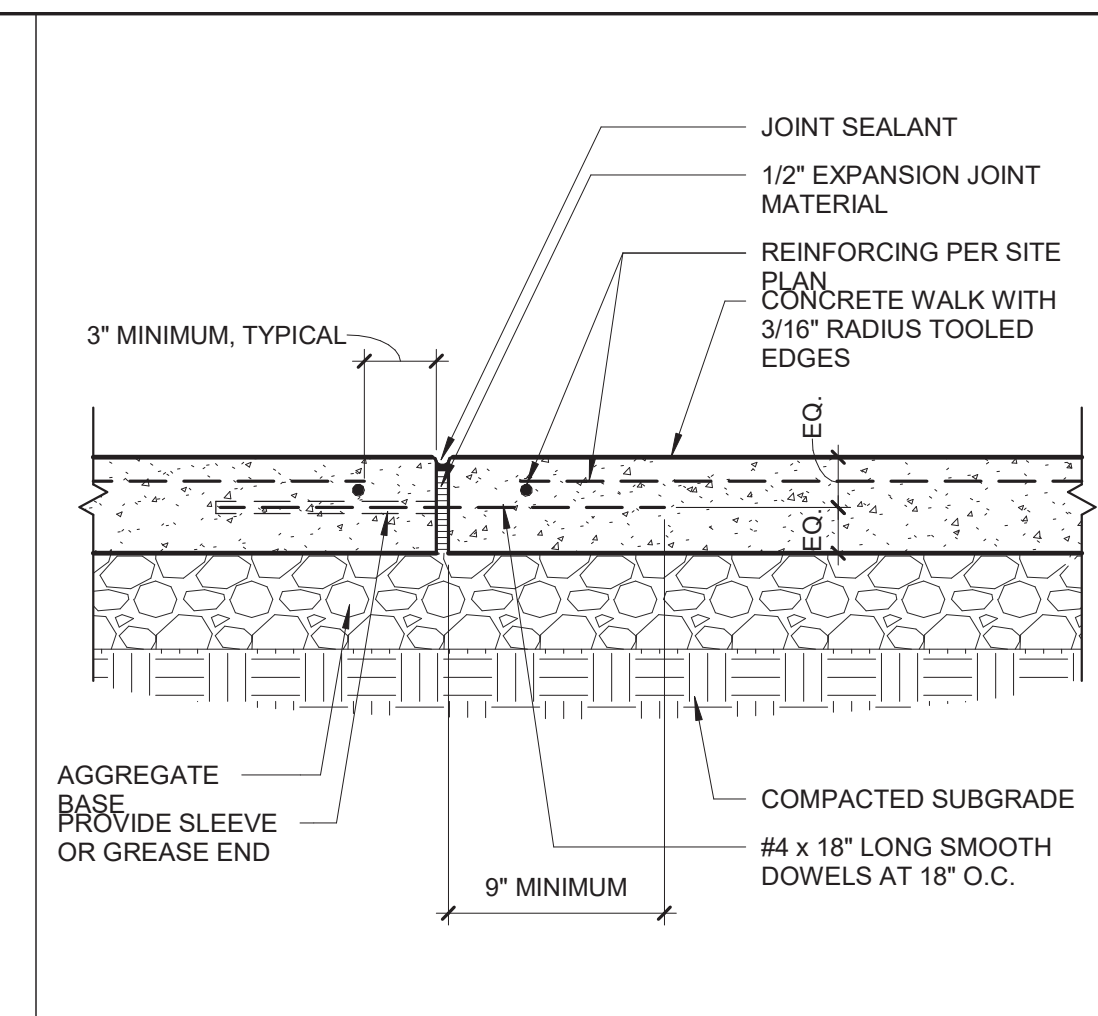
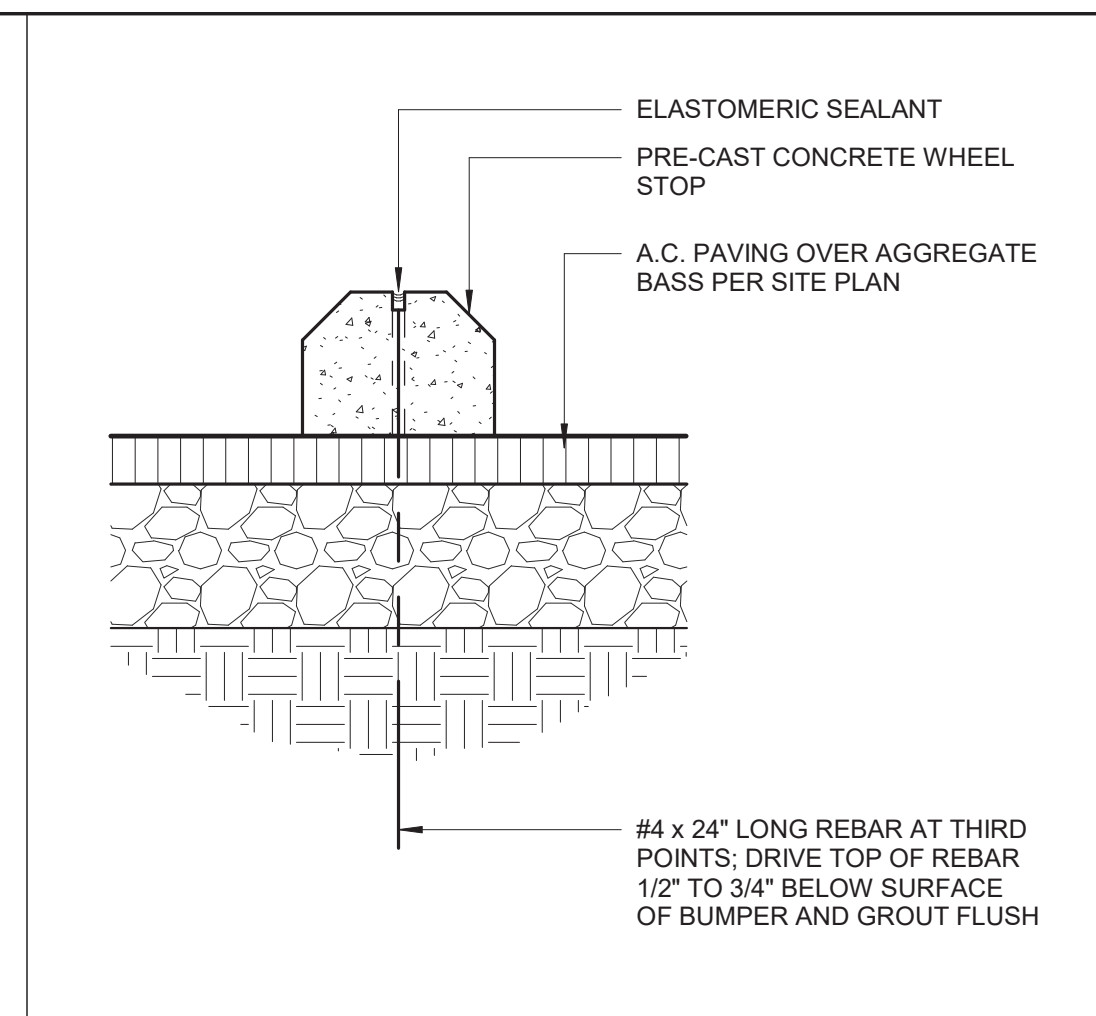


NOTES APPLICABLE TO SIGNAGE DETAIL 11, 14, 22/3A8000

- ALL SIGN SUBSTRATES SHALL BE 1/8" THICK REFLECTORIZED ALUMINUM.
- LETTERS AND GRAPHICS SHALL BE SILK SCREENED REFLECTORIZED ALUMINUM.
- ALL SIGNS SHALL BE MOUNTED WITH TAMPER PROOF SCREWS TO GALVANIZED 2" DIAMETER STANDARD STEEL PIPE. PIPE SHALL BE SHOP PRIMED AND PAINTED WITH TWO (2) COATS OF EXTERIOR ENAMEL.
- IN LIEU OF TAMPER PROOF SCREWS, SPOT WELDING END OF BOLT AFTER NUT INSTALLATION IS ACCEPTABLE.
- PROVIDE 3/4" RADIUS AT ALL SIGN CORNERS.
- SIGNS SHALL BE MOUNTED IN A CONSPICUOUS LOCATION.



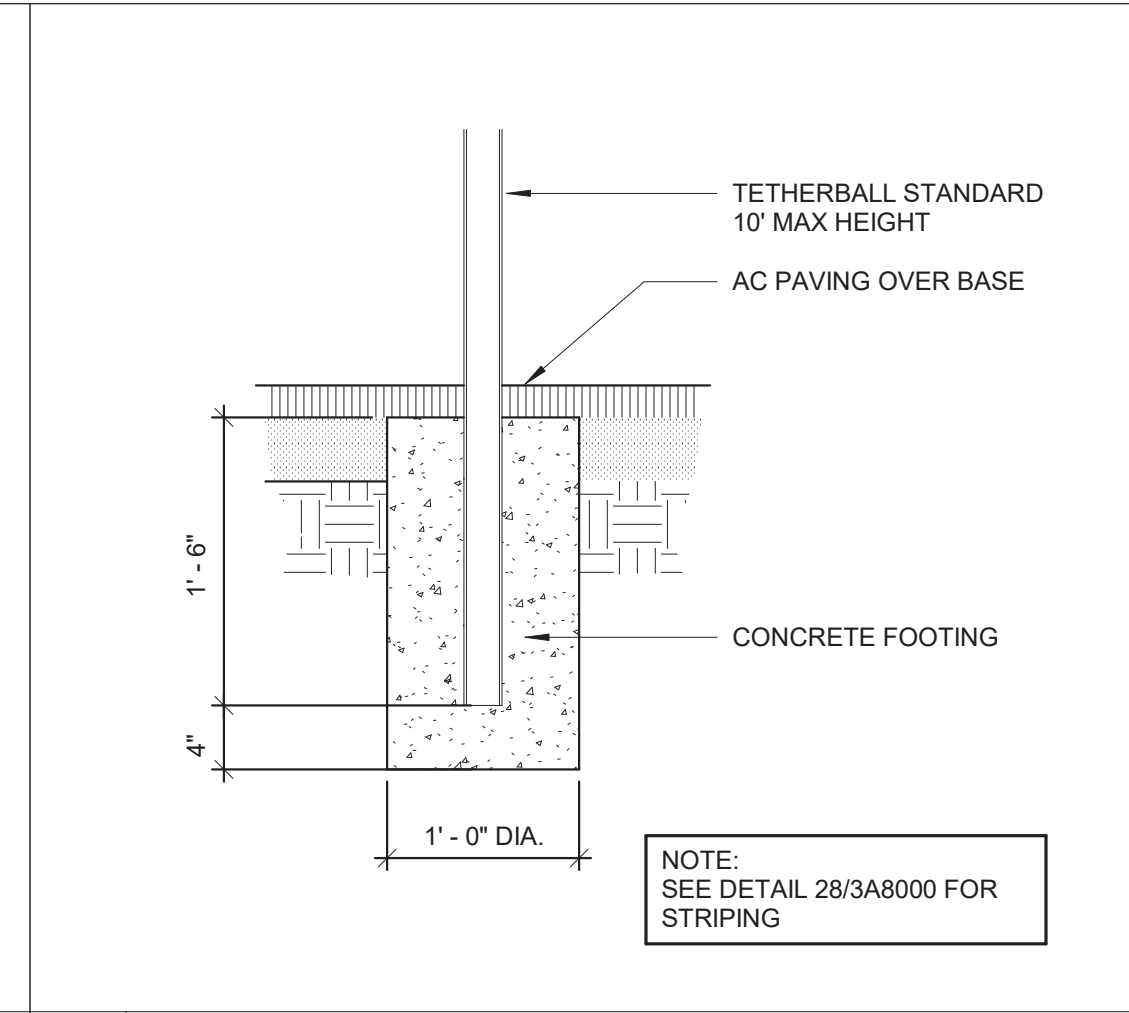
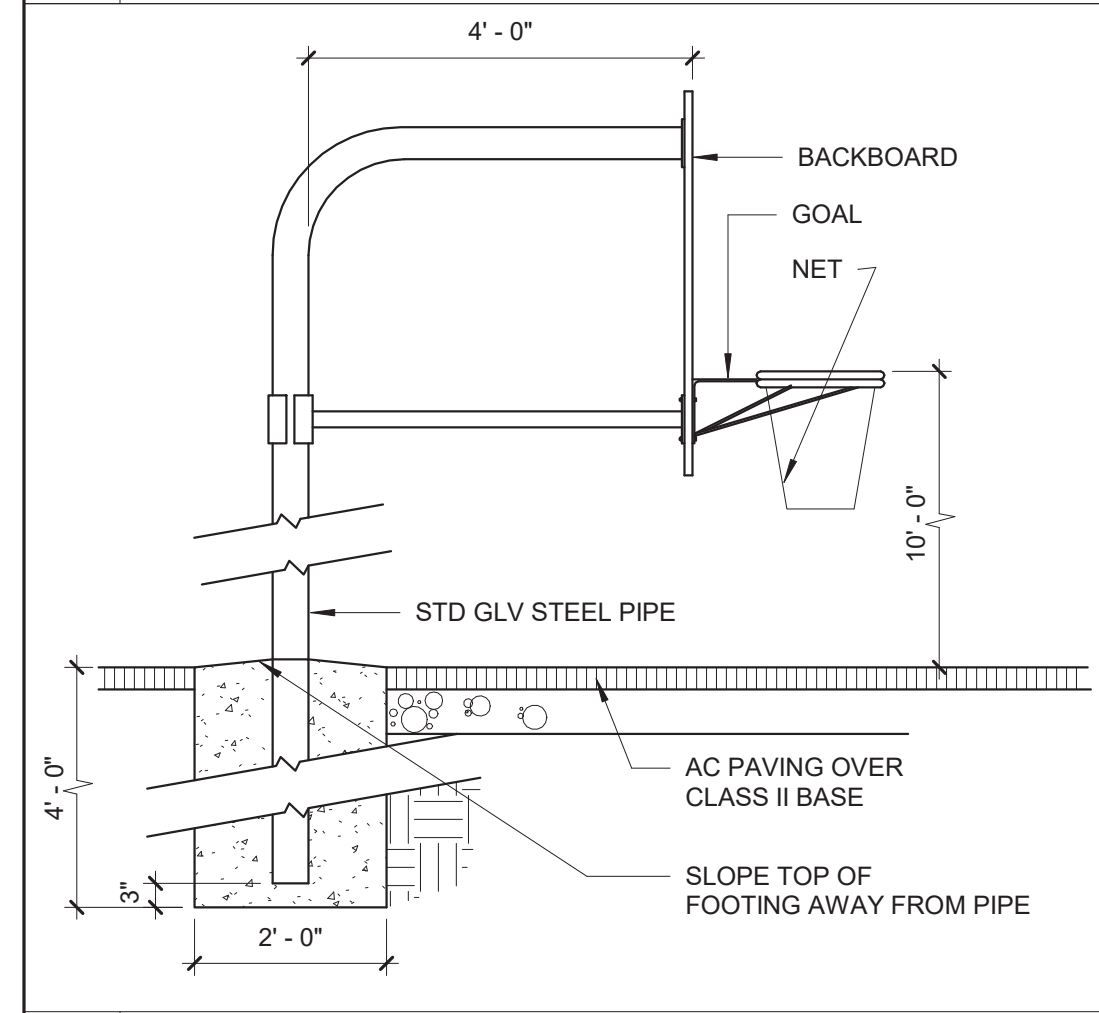
30 BASKETBALL COURT 1/16" = 1'-0"

20 MOTORCYCLE PARKING 1/4" = 1'-0"

15 SIGNAGE NOTES 1/8" = 1'-0"

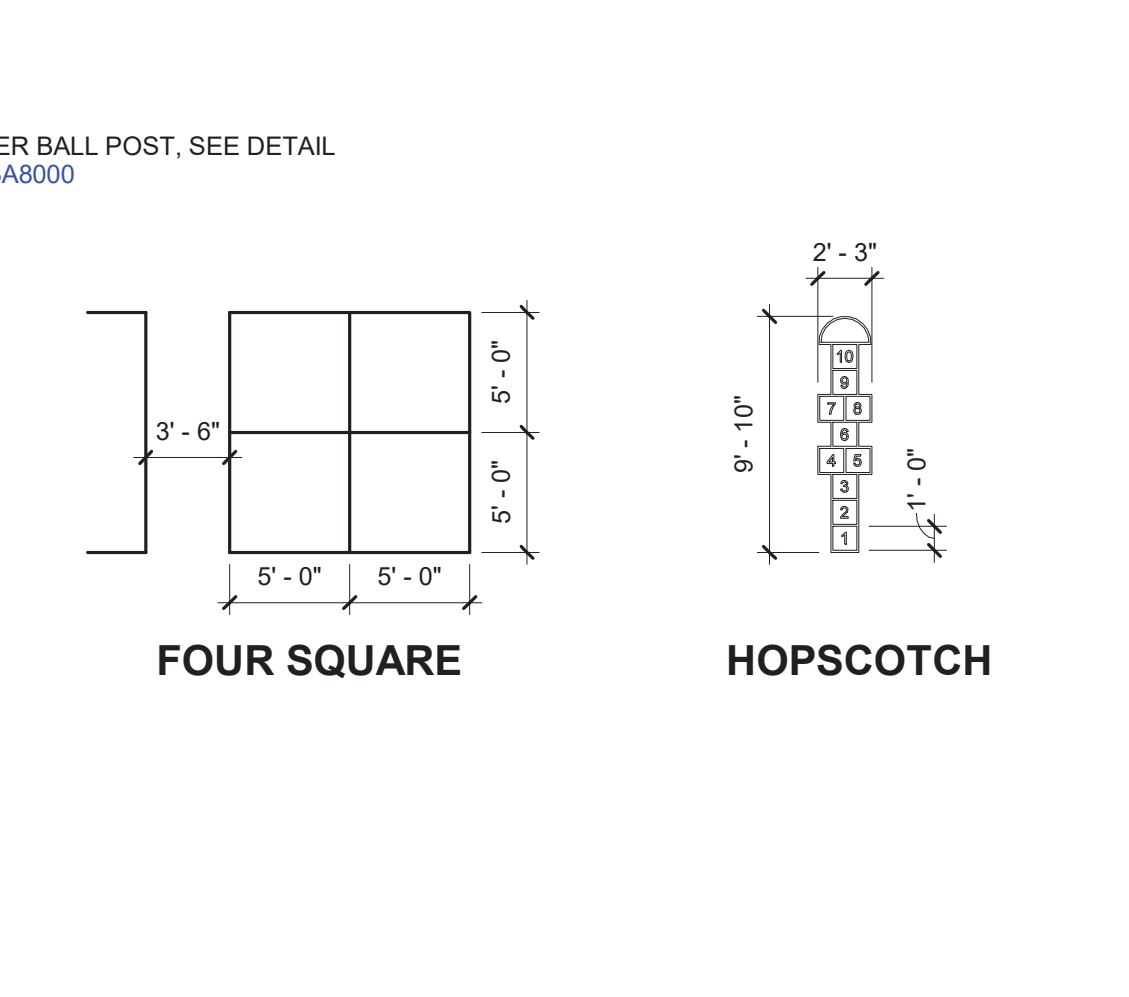
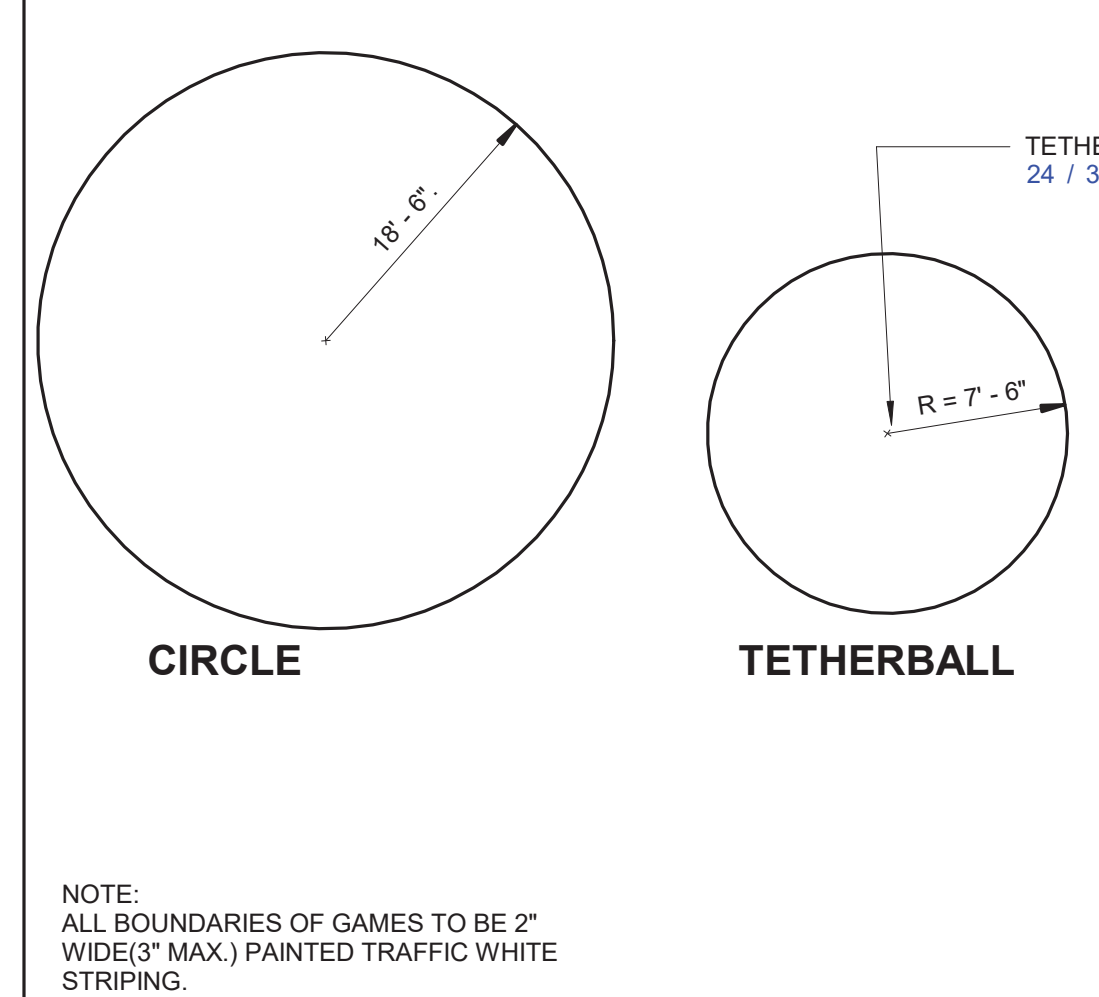
10 WHEELSTOP 1 1/2" = 1'-0"

5 EXPANSION JOINT 1 1/2" = 1'-0"



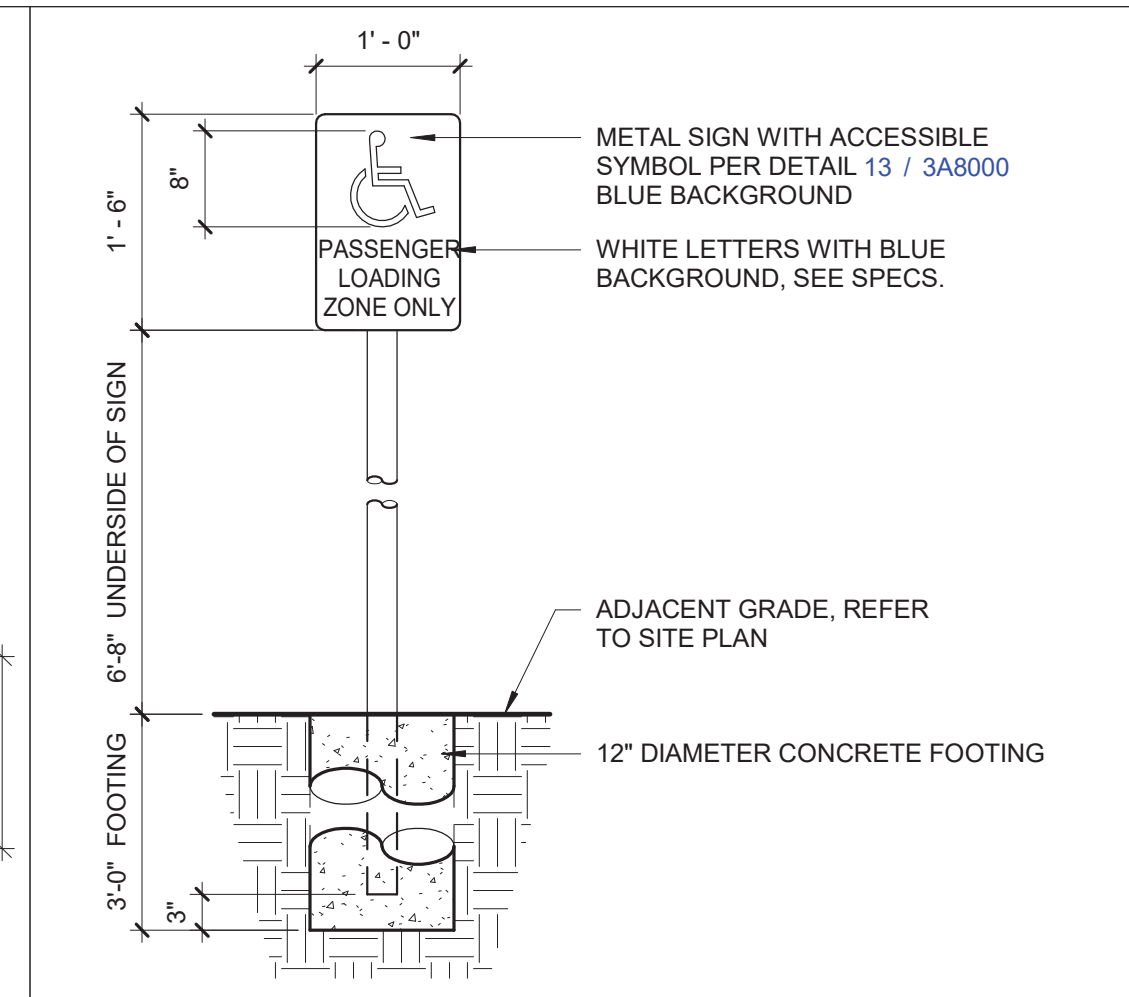
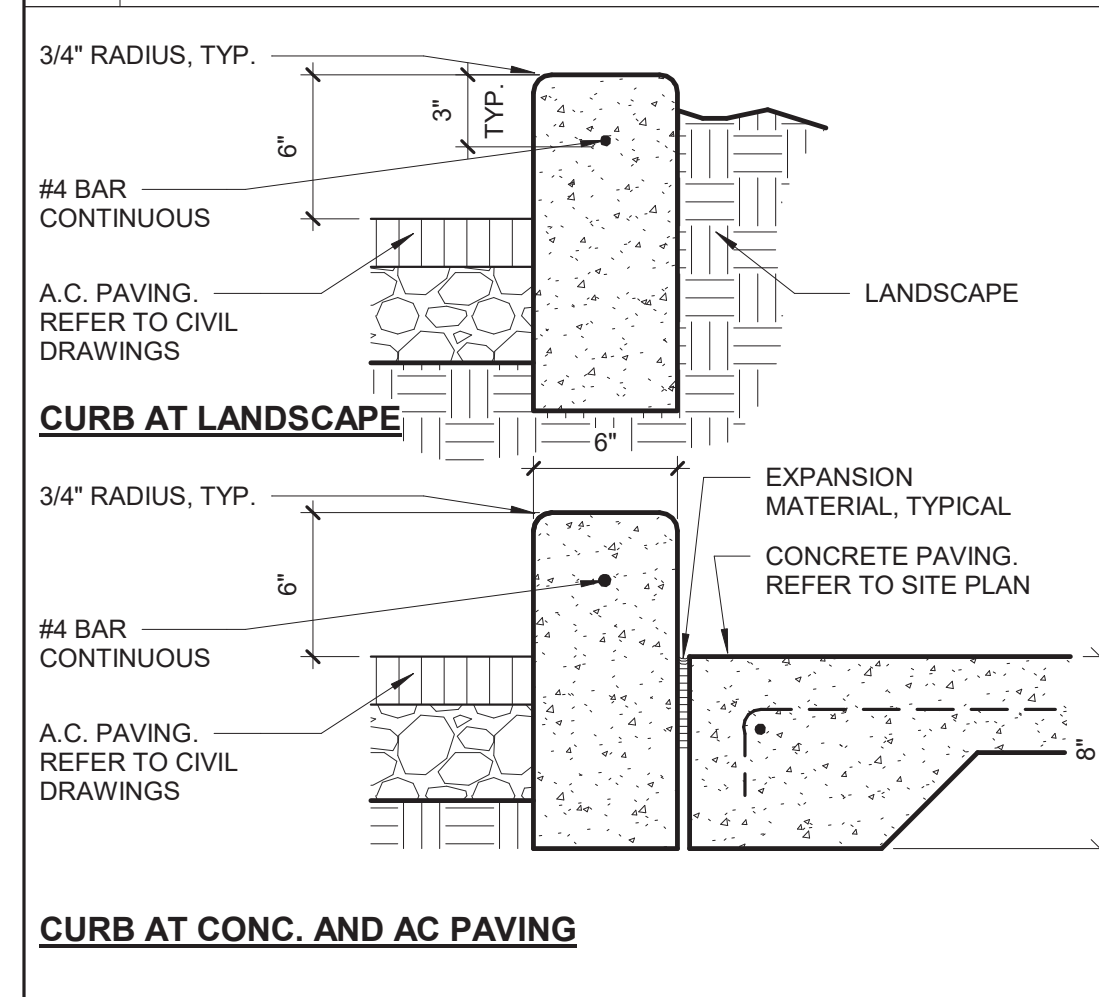
29 BASKETBALL BACKSTP. 1/2" = 1'-0"

24 TETHERBALL POST 1" = 1'-0"



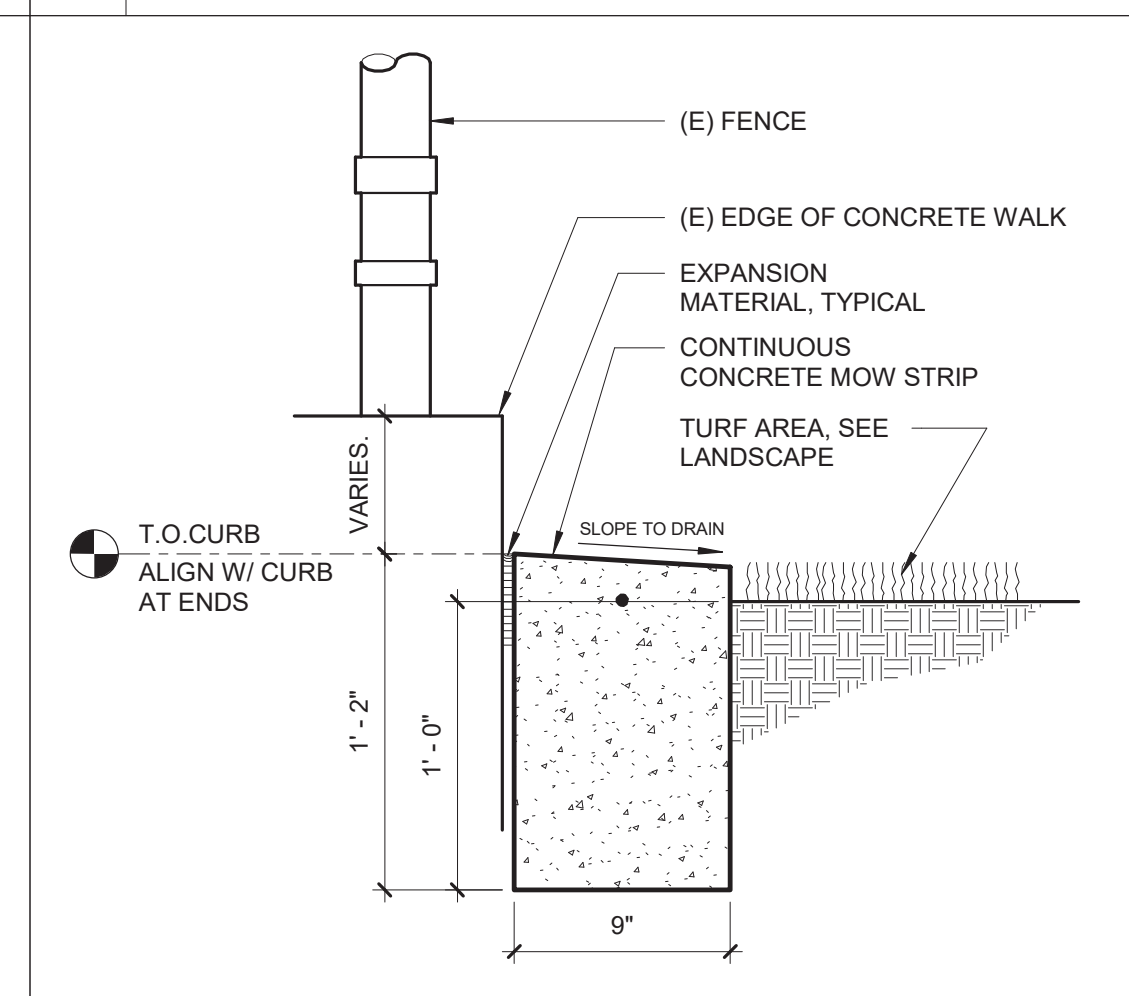
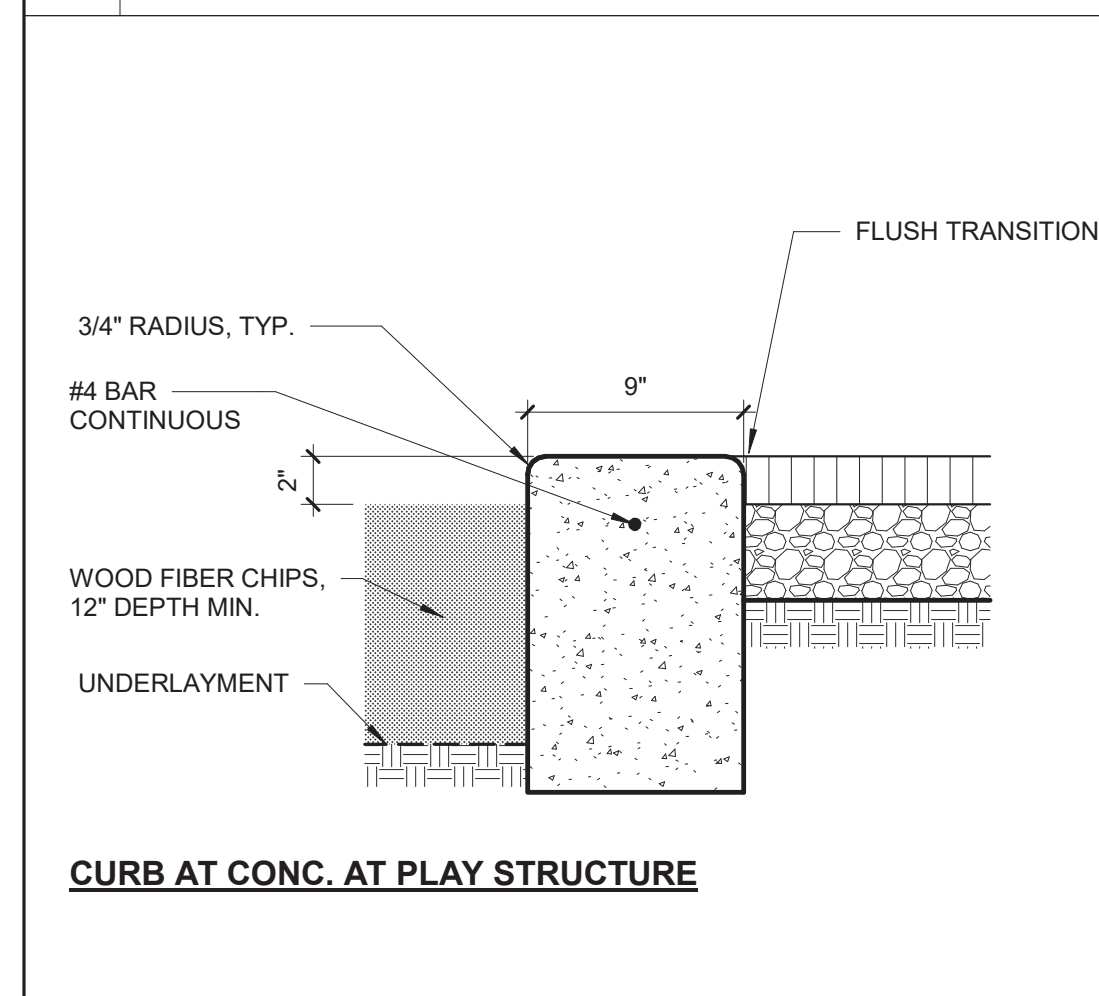
28 PLAYGROUND GAMES 1/8" = 1'-0"

18 A.C. PAVING TO (E) A.C. 1 1/2" = 1'-0"



27 CONCRETE CURB 1 1/2" = 1'-0"

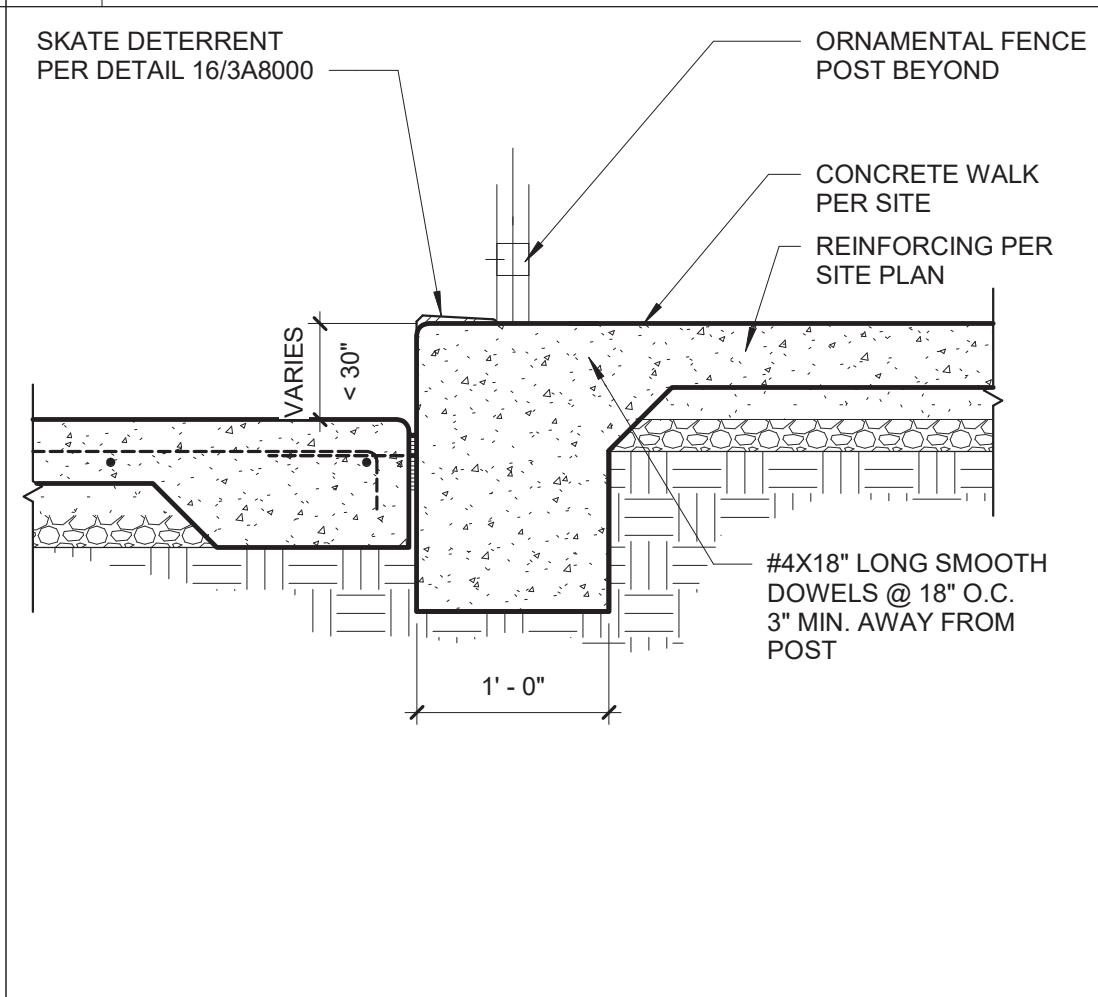
22 PASSENGER DROP OFF 3/4" = 1'-0"



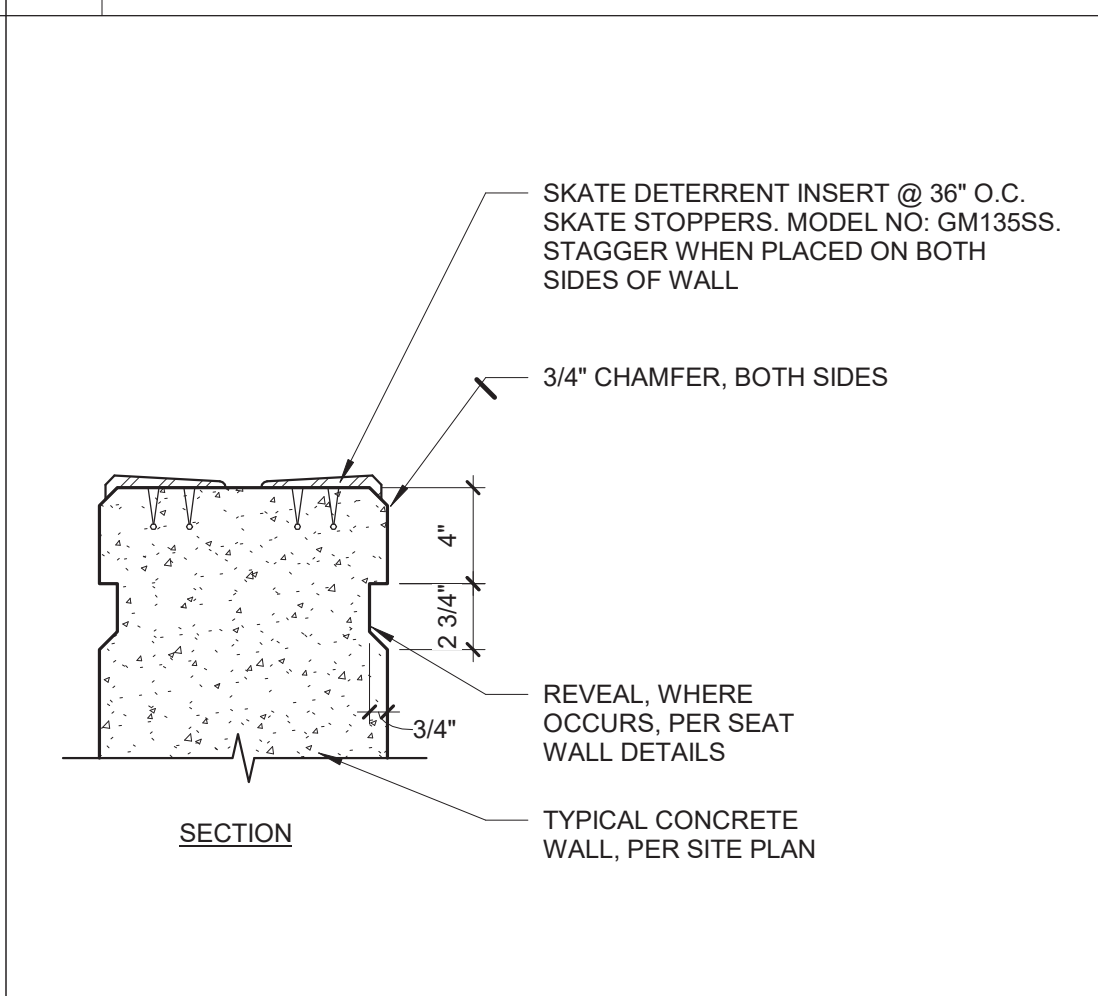
26 CONCRETE CURB 1 1/2" = 1'-0"

21 MOW STRIP @ FENCE 1 1/2" = 1'-0"

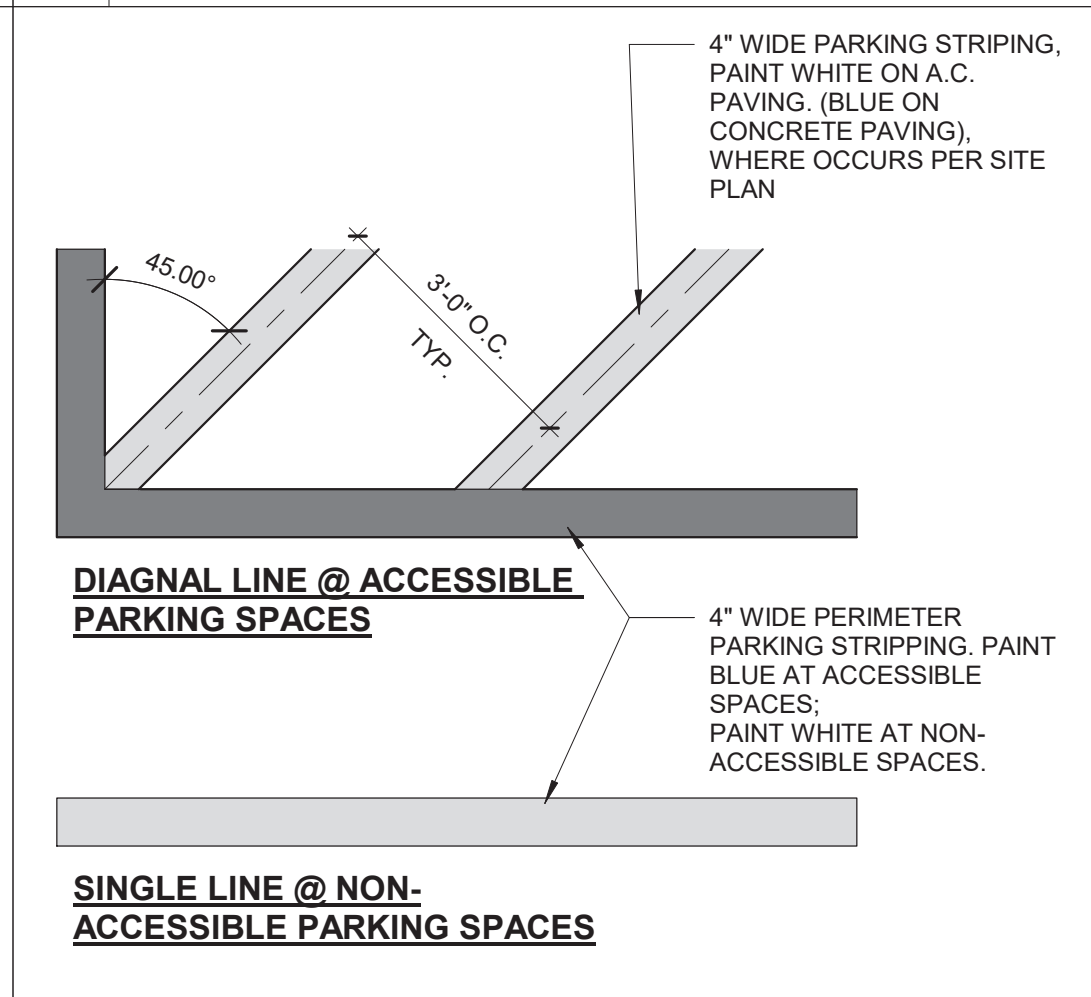
17 ELEV. CHANGE - FENCE 1" = 1'-0"



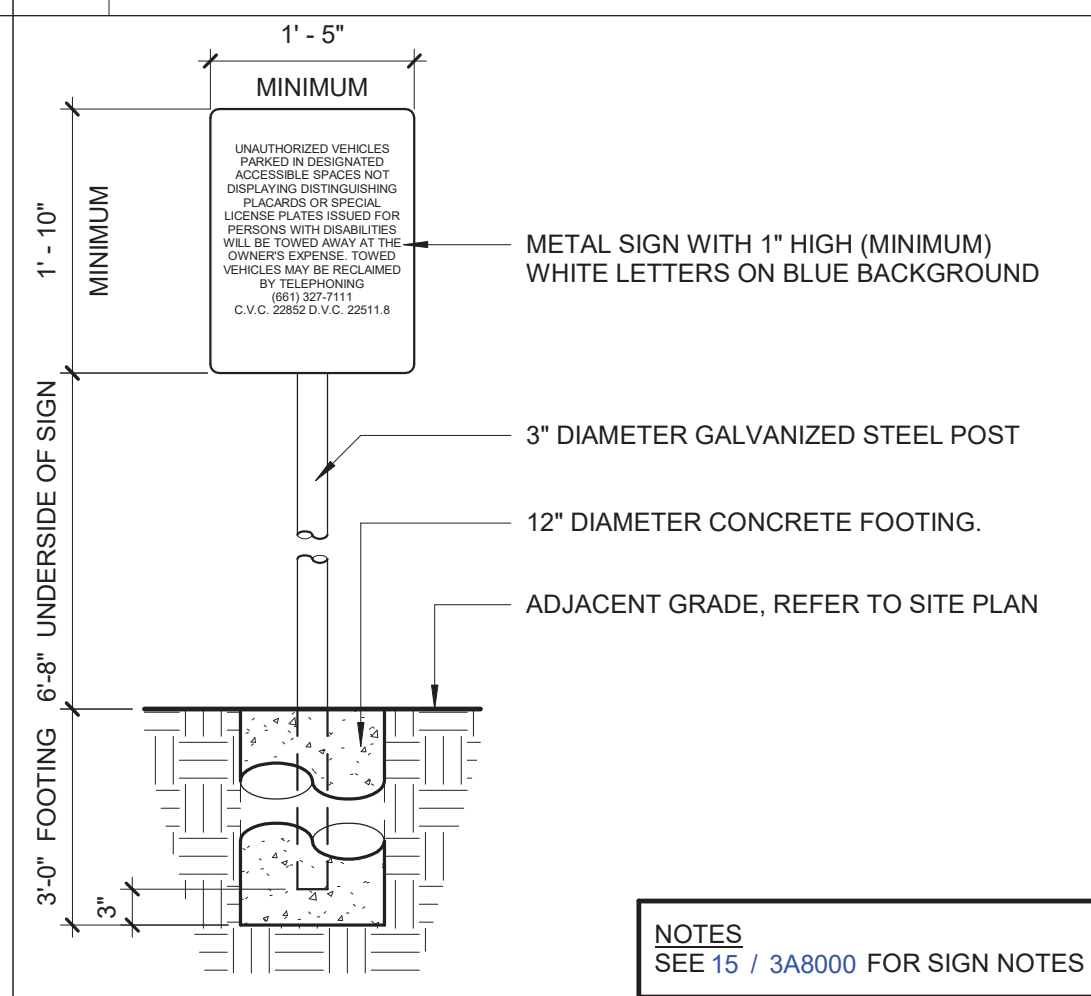
16 SKATE DET. - INSERTS 1 1/2" = 1'-0"



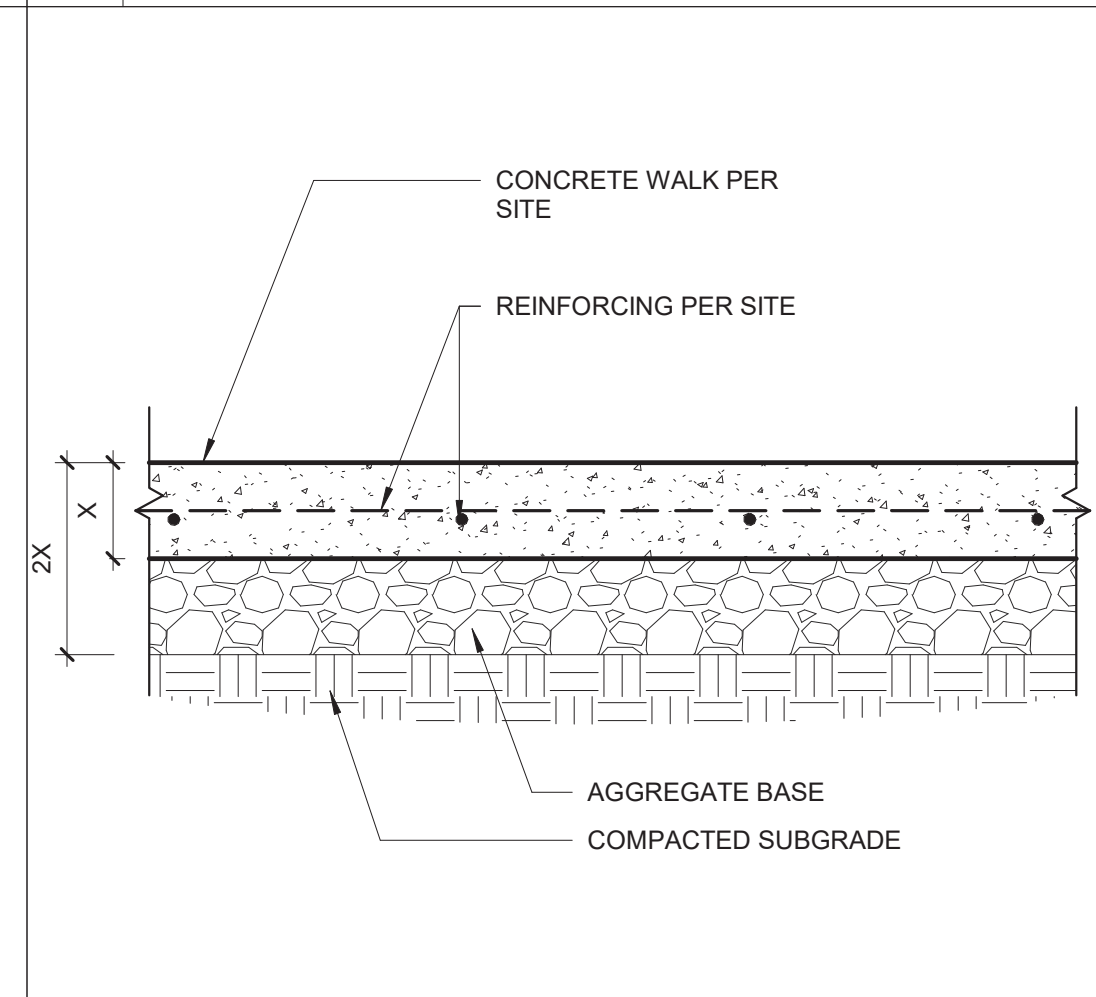
14 ACCESSIBLE SIGNAGE 3/4" = 1'-0"



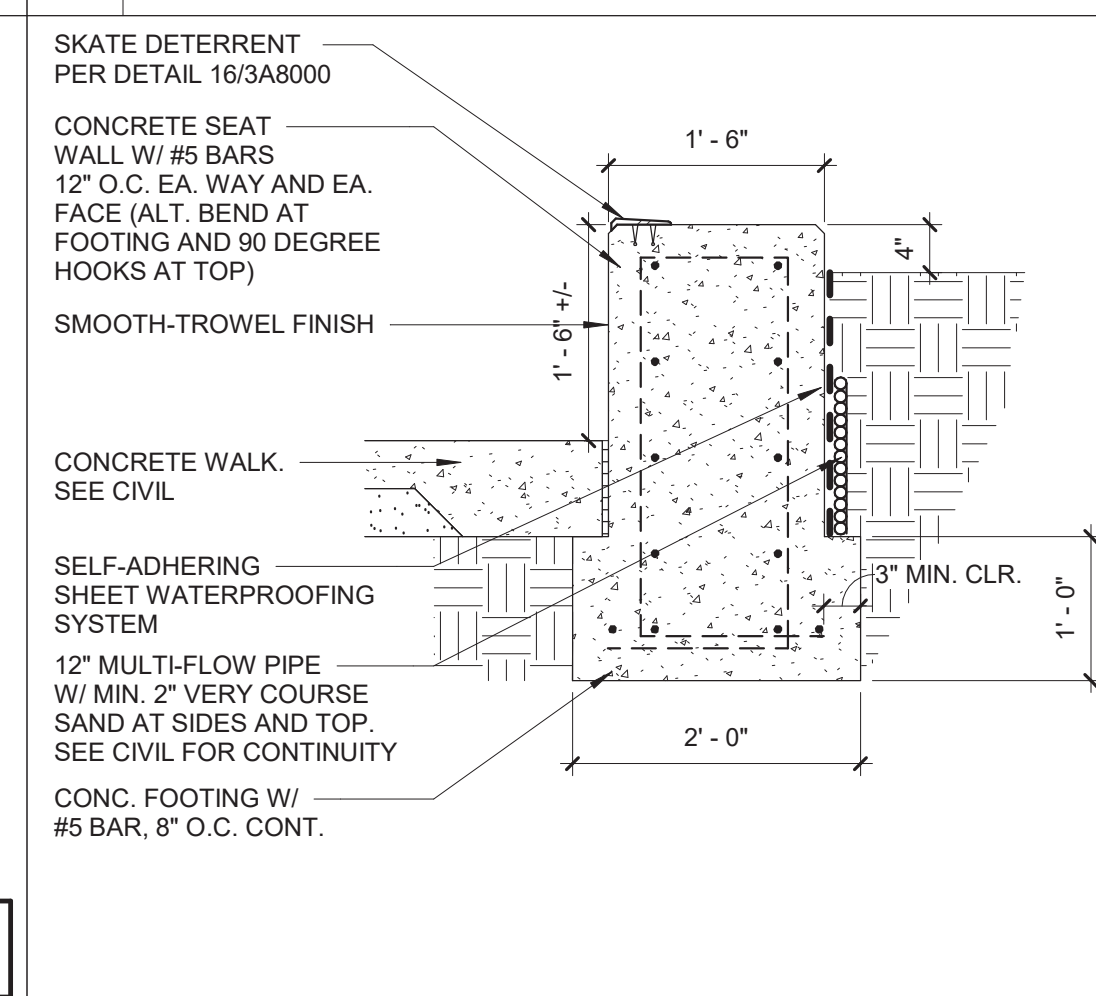
13 ISA SYMBOL 1" = 1'-0"



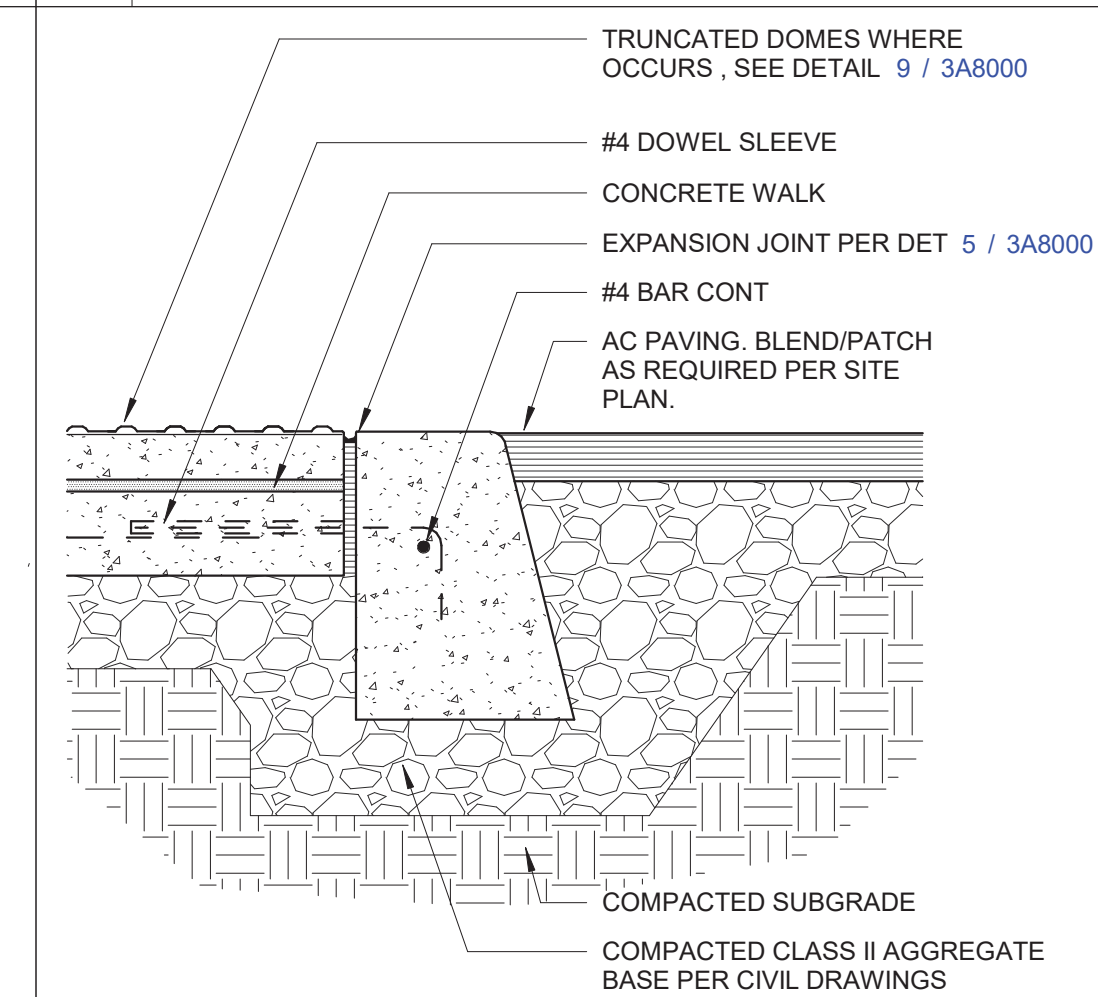
9 TRUNCATED DOMES 6" = 1'-0"



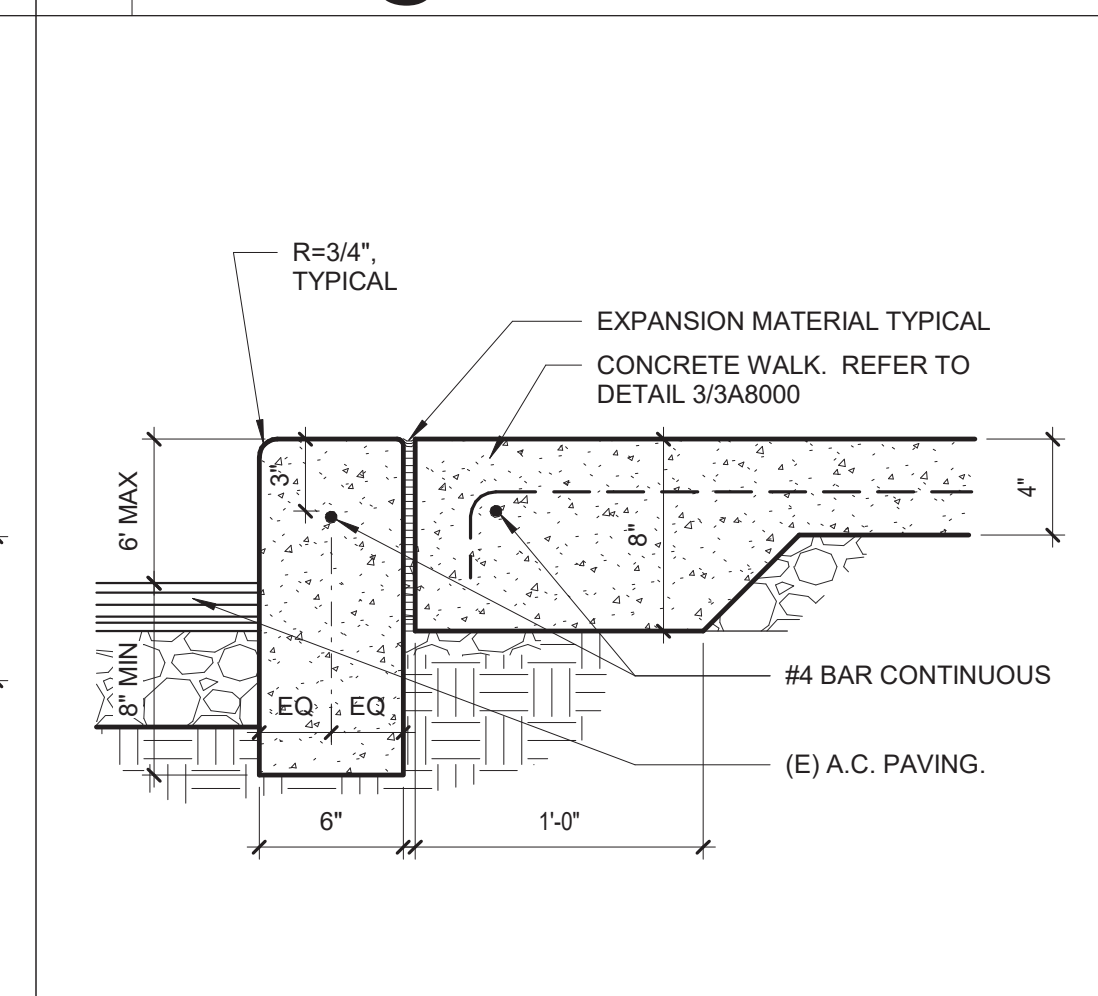
12 PARKING STRIPE 1" = 1'-0"



8 CONC. TO (E) CONC. 1 1/2" = 1'-0"



7 CONC WALKWAY 1 1/2" = 1'-0"



AGENCY INFORMATION:

IDENTIFICATION STAMP
DIV. OF THE STATE ARCHITECT
APP. 03-120098 INC.
REVIEWED FOR
SS [] FLS [] ACS []
DATE: 04/27/2020

SEAL
LICENSED ARCHITECT
No. 218079
EXPIRES 10/21
STATE OF CALIFORNIA

COPYRIGHT:
Any reproduction or distribution for any purpose other than authorized by IBI Group is forbidden.

COPYRIGHT 2020 IBI GROUP

REVISIONS

NO.	DATE SUBMITTED	DATE APPROVED	DESCRIPTION

CONSULTANT

PRIME CONSULTANT

ARCHITECTURE PLANNING
IBI
San Luis Obispo
4119 Broad Street, Suite 210
San Luis Obispo, CA 93401
805.546.0433 fax: 805.546.0504
ibigroup.com

BAKERSFIELD CITY SCHOOL DISTRICT

BESSIE OWENS E.S. MODERNIZATION
815 POTOMAC AVE, BAKERSFIELD, CA 93307

OPSC or OSHPD PROJ. NO: N/A
PROJECT NO: 19122.01-38
DRAWN BY: CZHM
CHKD BY: rR/RM
ISSUE DATE: 04/01/2020

SHEET TITLE
SITE DETAILS

SHEET NUMBER
3A8000

2020-04-01 11:46:12
RLOT DATE: AM