



787 Spreckels Ave., Manteca, CA 95336
Phone (209) 825-1921 - Fax (209) 825-7018
www.americanmodular.com

INTELLECTUAL PROPERTY & PROPRIETARY RIGHTS STATEMENT
COPYRIGHT © AMERICAN MODULAR SYSTEMS (AMS)
AMS OWNS ALL COPYRIGHT AND OTHER INTELLECTUAL PROPERTY AND PROPRIETARY RIGHTS IN THESE DRAWINGS, SPECIFICATIONS, AND THE MATERIAL CONTAINED HEREIN. CERTAIN ELEMENTS SHOWN IN THESE DOCUMENTS ARE REGISTERED TRADEMARKS OF AMS. ALL PATENTABLE MATERIALS CONTAINED IN THESE DOCUMENTS AND ORIGINATING WITH AMS ARE KEPT IN THE SOLE PROPERTY OF AMS. THESE DRAWINGS, SPECIFICATIONS, AND THE MATERIAL CONTAINED HEREIN MAY NOT BE REPRODUCED, COPIED, TRANSMITTED, COPIED, DISTRIBUTED, MODIFIED, OR OTHERWISE DEPICTED OR REPRODUCED IN ANY MANNER WITHOUT THE WRITTEN CONSENT OF AMS. ANY REPRODUCTION OR MODIFICATION OF THESE DRAWINGS, SPECIFICATIONS, OR MATERIALS WITHOUT THE WRITTEN CONSENT OF AMS IS EXPRESSLY PROHIBITED. AMS MAKES NO WARRANTY, REPRESENTATION, OR AGREEMENT WITH ANY SUBMITTER OR DISTRIBUTOR TO MEET OFFICIAL REGULATORY REQUIREMENTS WILL NOT BE CONSIDERED AS PUBLICATION IN CONNECTION OF AMS' COPYRIGHT OR OTHER INTELLECTUAL PROPERTY OR PROPRIETARY RIGHTS.

PRE-CHECKED SET NAME

**24'x40' THRU 120'x40'
HIGH PITCH MODULAR
BUILDINGS**

SITE SPECIFIC PROJECT NAME

SHEET TITLE

**RESTROOM OPTIONS
PLUMBING PLANS
& FIXTURE SCHEDULE**

MANUFACTURER PROFESSIONAL OF RECORD ON PC



THESE DRAWINGS ARE PRELIMINARY AND NOT FOR CONSTRUCTION UNLESS STAMPED & SIGNED BY THE ENGINEER OF RECORD.

PROJECT SPECIFIC STATE AGENCY APPROVAL

ORIGINAL PC STATE AGENCY APPROVAL

BASED ON PC# 02-115726

PRE-CHECK (PC) DOCUMENT
CODE: 2016 CBC
A SEPARATE PROJECT APPLICATION FOR CONSTRUCTION IS REQUIRED.

REVISIONS

NO REVISIONS

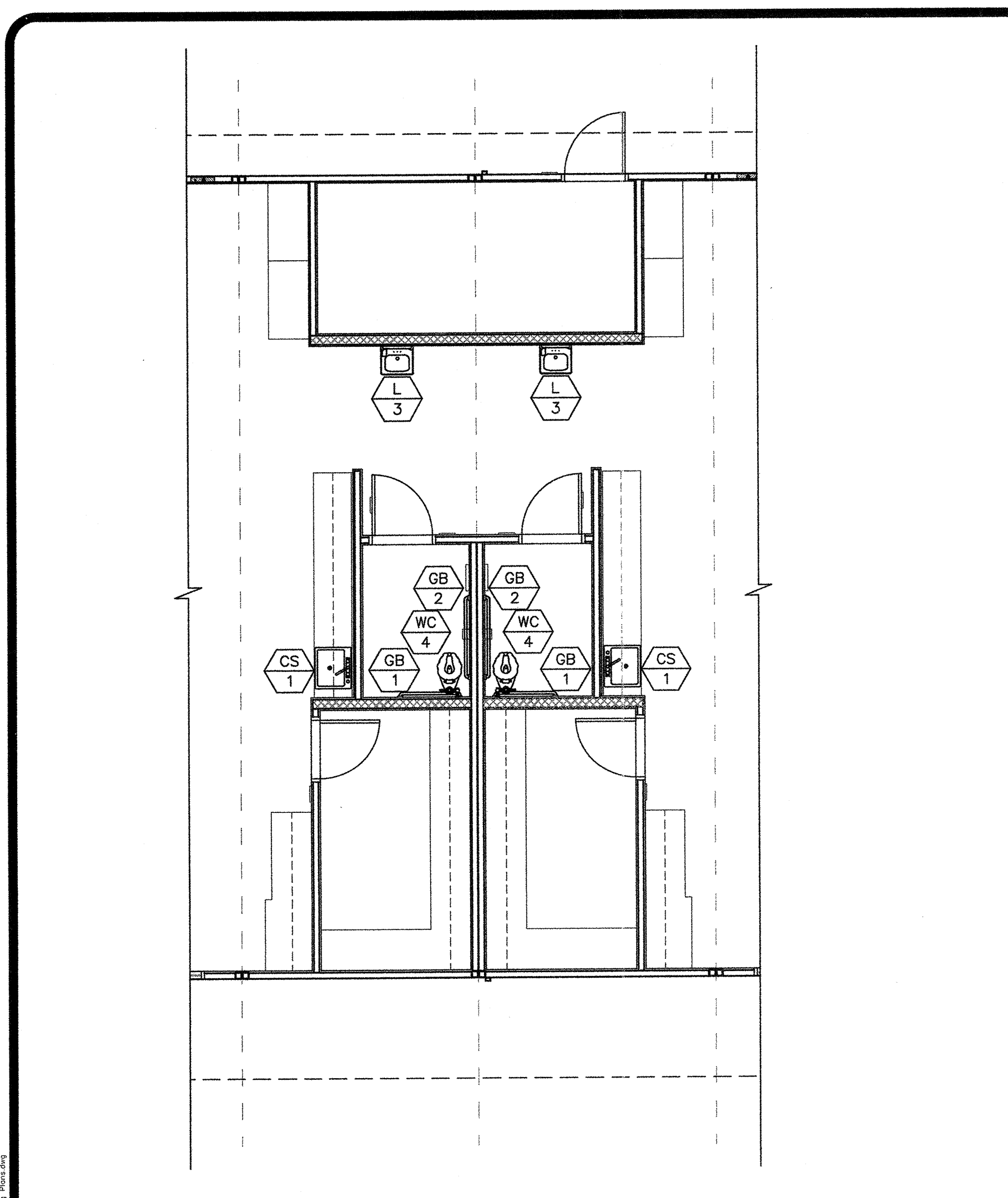
DRAWN BY: AH

SCALE: AS NOTED

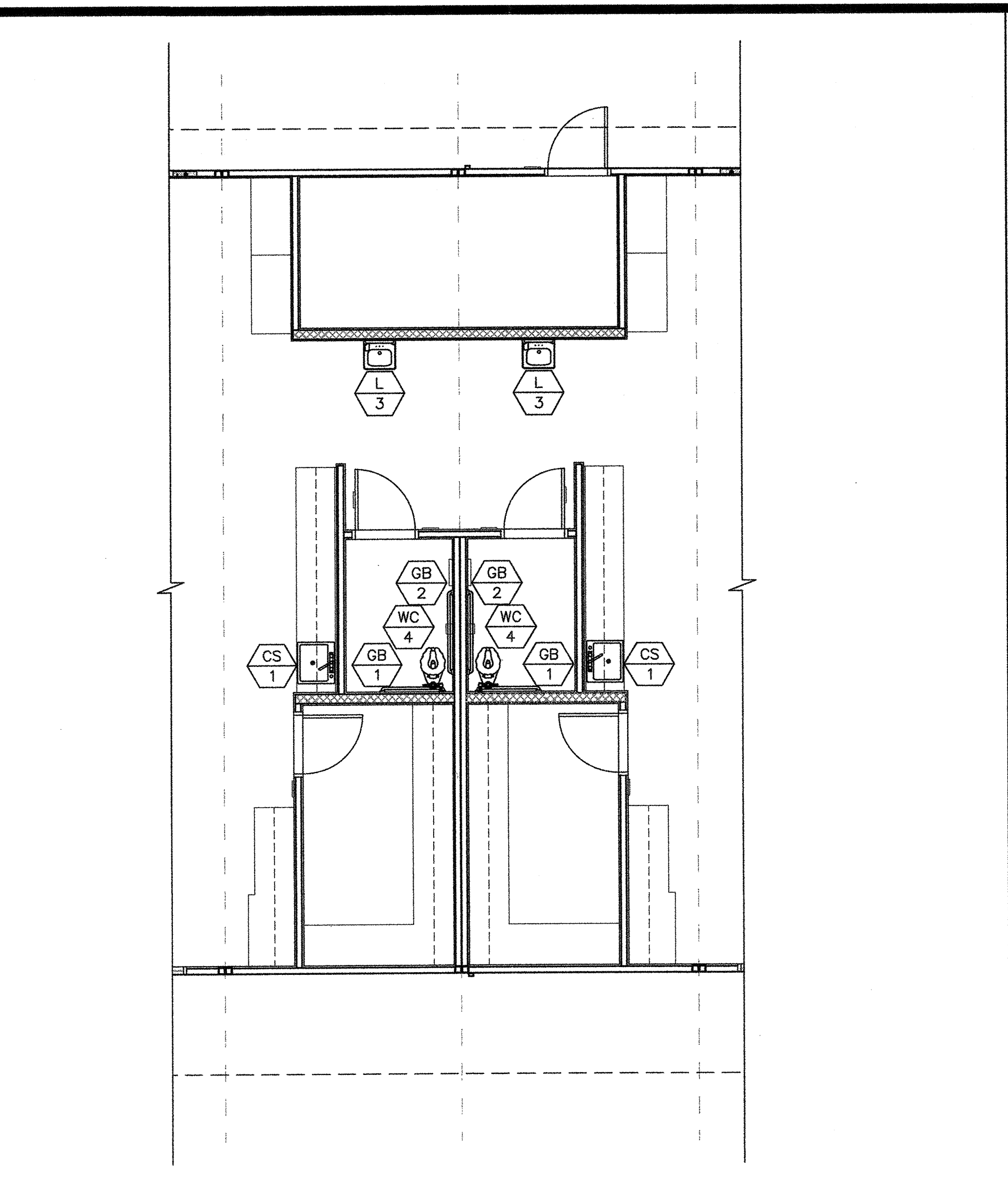
DATE: 06/20/19

SHEET NUMBER

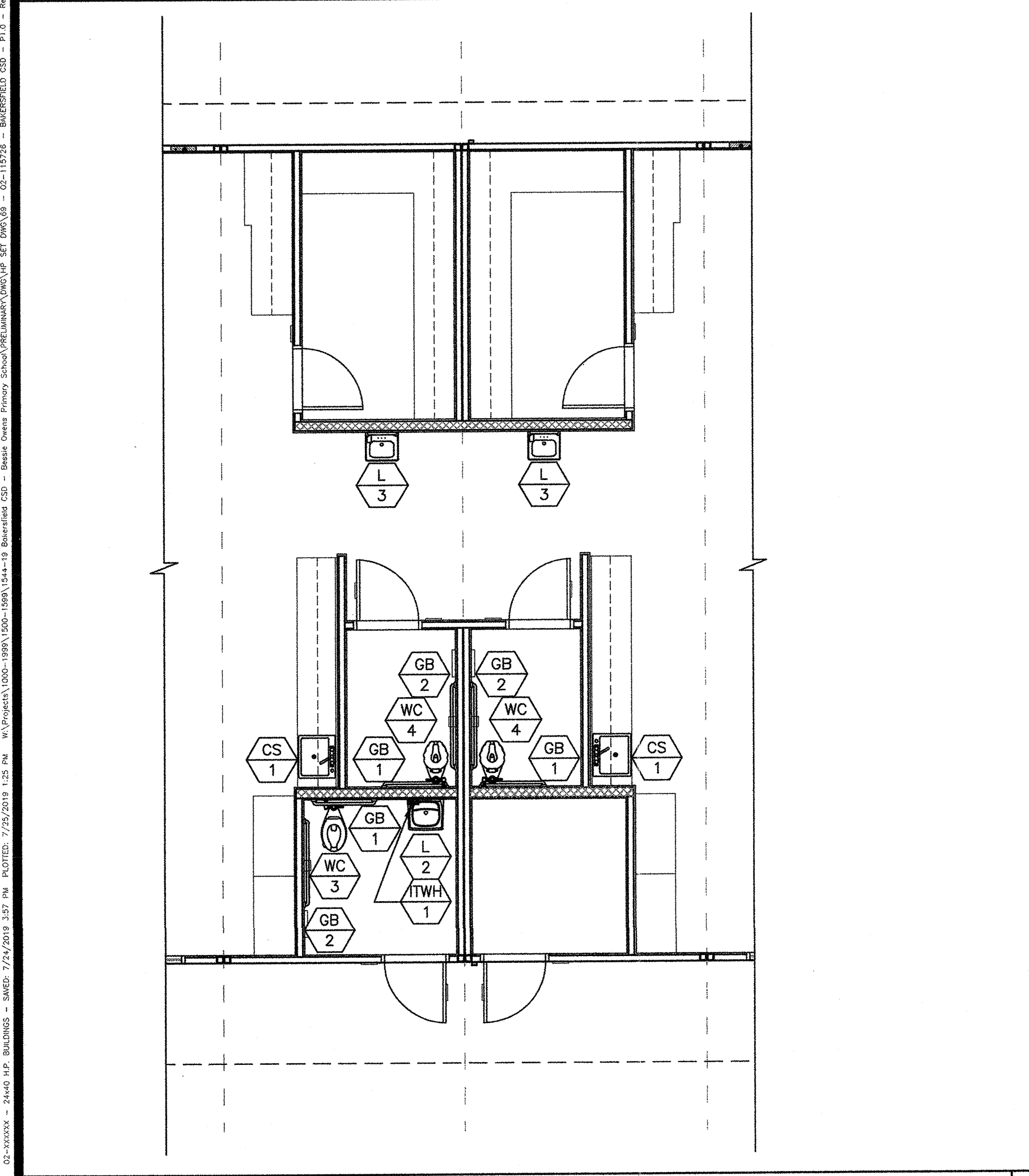
P1.0-02



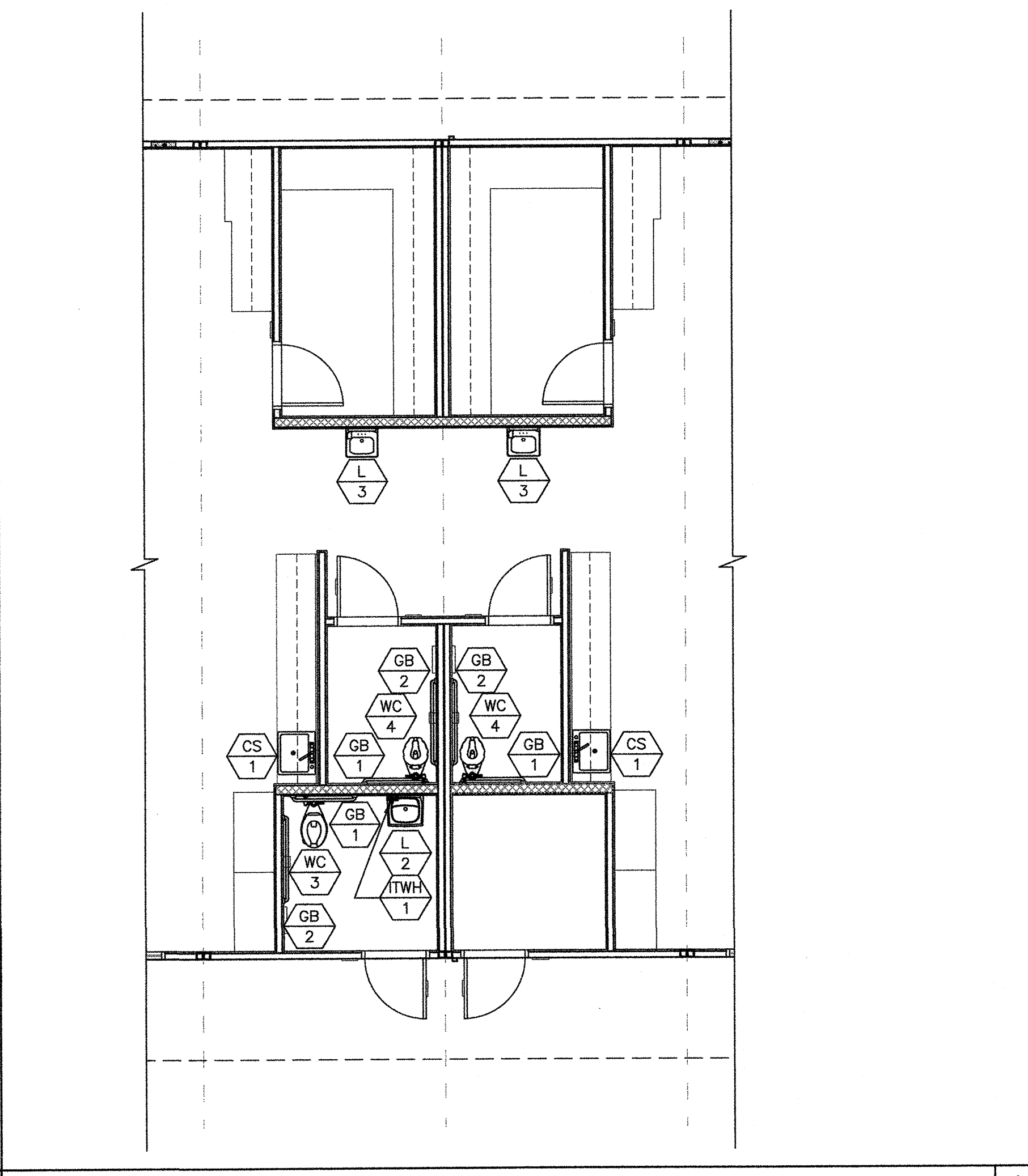
BUILDING KINDERGARTEN 1 PLUMBING PLAN SCALE: 3/16" = 1'-0" 1



BUILDING KINDERGARTEN 2 PLUMBING PLAN SCALE: 3/16" = 1'-0" 2



BUILDING KINDERGARTEN 3 PLUMBING PLAN SCALE: 3/16" = 1'-0" 3



BUILDING KINDERGARTEN 4 PLUMBING PLAN SCALE: 3/16" = 1'-0" 4

MARK	FIXTURE	TYPE AT KINDERGARTEN	TYPE AT ELEMENTARY	TYPE AT ADULT	REMARKS
WC 1	WATER CLOSET		WALL MOUNT TYPE KOHLER 'KINGSTON' MODEL K-4325 OR EQUAL. FINISH - ABS. A.F.F. - FLOW RATE OF 1.28 G.P.F.		FLUSH VALVE ZURN MODEL Z8000V-HET - 1.28 G.P.F. OR EQUAL. LOCATE AS SPECIFIED ON FLOOR PLANS. MOUNT ACCESSIBLE FIXTURES PER SCHEDULE 7/P2.0.
WC 2	WATER CLOSET			WALL MOUNT TYPE KOHLER 'KINGSTON' MODEL K-4325 OR EQUAL. LOWEST AT 15" A.F.F. - FLOW RATE OF 1.28 G.P.F.	FLUSH VALVE ZURN MODEL Z8000V-HET - 1.28 G.P.F. OR EQUAL. LOCATE AS SPECIFIED ON FLOOR PLANS. MOUNT ACCESSIBLE FIXTURES PER SCHEDULE 7/P2.0.
WC 3	WATER CLOSET			FLOOR MOUNT TYPE KOHLER 'HIGHCLIFF' MODEL K-9605F OR EQUAL. LOWEST AT 15" A.F.F. - FLOW RATE OF 1.28 G.P.F.	FLUSH VALVE ZURN MODEL Z8000V-HET - 1.28 G.P.F. OR EQUAL. LOCATE AS SPECIFIED ON FLOOR PLANS. MOUNT ACCESSIBLE FIXTURES PER SCHEDULE 7/P2.0.
WC 4	WATER CLOSET		FLOOR MOUNT TYPE KOHLER 'PRIMARY' MODEL K-96064-SS OR EQUAL.		FLUSH VALVE ZURN MODEL Z8000V-HET - 1.28 G.P.F. OR EQUAL. LOCATE AS SPECIFIED ON FLOOR PLANS. MOUNT ACCESSIBLE FIXTURES PER SCHEDULE 7/P2.0.
L 1	BOYS/GIRLS LAVATORY		KOHLER 'HUDSON' MODEL K-2861		BOY/GIRL RESTROOM - FAUCET - CHICAGO, MODEL 3300-CP MOUNT AS SPECIFIED IN FLOOR PLANS. MOUNT ACCESSIBLE FIXTURES PER SCHEDULE 7/P2.0 - FLOW RATE OF 0.5 G.P.M.
L 2	ADULT LAVATORY		KOHLER 'HUDSON' MODEL K-2861		ADULT RESTROOM - FAUCET - CHICAGO, MODEL 3400-CP MOUNT AS SPECIFIED IN FLOOR PLANS. MOUNT ACCESSIBLE FIXTURES PER SCHEDULE 7/P2.0 - FLOW RATE OF 0.5 G.P.M.
L 3	LAVATORY		KOHLER 'HUDSON' MODEL K-2861		FAUCET - CHICAGO, MODEL 330-CP LOCATE AS SPECIFIED ON FLOOR PLANS. MOUNT ACCESSIBLE FIXTURES PER SCHEDULE 7/P2.0
M 1	MIRROR		WALL MOUNT TYPE BOBRICK MODEL B165 18X30 OR EQUAL.		MOUNT AS SPECIFIED IN FLOOR PLANS. MOUNT ACCESSIBLE MIRROR PER SCHEDULE 7/P2.0
GB 1	36" GRAB BARS		WALL MOUNT TYPE CREATIVE SPECIALTIES INTERNATIONAL MODEL 8736 & 8748 (1 1/4" CONCEALED SCREW 36" & 48") OR EQUAL.		18 GA. 304 STAINLESS STEEL SATIN FINISH MOUNT AS SPECIFIED IN FLOOR PLANS AND PER SCHEDULE 7/P2.0. (STRUCTURAL STRENGTH OF GRAB BARS 250# MIN.)
GB 2	48" GRAB BARS				
WH 1	WATER HEATER		RHEEM 6 GALLON ELECTRIC WATER HEATER MODEL PROE20-1-RH-POU 240 VOLT SINGLE PHASE		(MAX WATER HEATER WEIGHT) PER 6/M1.4 OR 1/P.20
FD 1	FLOOR DRAIN		WOOD FLOOR DRAIN SIOUX CHIEF MODEL MODEL 822-2DNRV CP-59HW.		LOCATE AS SPECIFIED ON FLOOR PLANS.
CS 1	CLASSROOM SINK		ELKAY MODEL PSDKADQ2517C 25X17 SINGLE BOWL SINK		FAUCET - HAWS, MODEL 5510LF BUBBLER- HAWS, MODEL 5054LF LOCATE AS SPECIFIED ON FLOOR PLANS. MOUNT ACCESSIBLE FIXTURES PER SCHEDULE 7/P2.0
TWH 1	INSTANT-TEMP WATER HEATER		CHRONOMITE INSTANT-TEMP WATER HEATER MODEL M20L/240 INSTANT SINGLE PHASE 104"		CHRONOMITE MODEL M20L/208 OR EQUAL

- NOTES:**
- ALL WATER FIXTURES MUST MEET REQUIREMENTS OF CAL-GREEN TITLE 24, PART 11, SECTION 5.303.3 "WATER CONSERVING PLUMBING FIXTURES & FITTINGS".
 - FOR OPTIONAL FLOOR-MOUNT WATER CLOSET, SEE PLUMBING SCHEDULE MARK WC/3 (NOT SHOWN ON PLAN).
 - NOT ALL ITEMS LISTED MAY OCCUR IN THIS PROJECT.
 - PROVIDE BRASSCRAFT COPPER FAUCET RISER
 - PROVIDE BRASSCRAFT SPEEDI-PLUMB PLUS BRAIDED CONNECTOR.
 - PROVIDE BRASSCRAFT ANGLE STOPS

PLUMBING FIXTURE SCHEDULE

MARK	FIXTURE	TYPE AT KINDERGARTEN	TYPE AT ELEMENTARY	TYPE AT ADULT	REMARKS
A 1					PLUMBING FIXTURE I.D. - SEE SCHEDULE ABOVE

- PLUMBING NOTE**
- MODULAR MFR. TO STUB THROUGH FLOOR ALL PLUMBING LINES. BUILDING PERIMETER P.O.C.'S SHOWN ARE FOR COORDINATION PURPOSES ONLY. ALL UNDER-FLOOR CONNECTIONS ARE BY SITE CONTRACTOR, U.O.N.
- DIMENSIONS ARE TO FACE OF FINISH (F.O.F.) UNLESS NOTED OTHERWISE (i.e. F.O.C., ©)
 - RESTROOM CONFIGURATION MAY VARY PER BUILDING CONFIGURATION.
 - RESTROOM MODULE OCCURS ONLY AT END OF BUILDING. SINGLE RESTROOMS MAY OCCUR IN ANY PART OF A BUILDING.
 - RESTROOM MODULE CANNOT STAND ALONE AND SHALL BE ASSEMBLED TOGETHER WITH AT LEAST ONE OTHER 12'x40' MODULE.
 - INTERIOR WALLS MAY OCCUR THROUGHOUT BUILDING. REFER TO SHEET S8.1 OR S9.1 FOR ATTACHMENTS.
 - REFER TO SCHEDULE 10/P2.0 FOR ACCESSIBLE HEIGHTS AT TOILETS.
 - REFER TO DETAILS 1, 3, 4 & 5, SHEET A7.1 FOR TOILET PARTITION ANCHORAGE BLOCKING.
 - SEWER AND WATER STUB OUTS SHALL BE LOCATED WITHIN THE ALLOWABLE AREA AS SHOWN ON FLOOR PLAN AND CONNECTIONS SHALL BE EASILY ACCESSIBLE FOR FUTURE RELOCATION. STUB OUT HEIGHT SHALL BE COORDINATED BY THE MANUFACTURER.
 - PIPING MATERIAL
 - WATER: COPPER TYPE "L", 95/5 SOLDER.
 - WASTE DRAIN AND VENT: ABS.

SYMBOLS LEGEND **GENERAL NOTES**